

REGIONAL INTERESTS DEVELOPMENT APPROVAL (RIDA) - 12 May 2020

RPI20/023 Santos – Leghorn 1, Jarrar 7 & 8, Wallis 1

(Given under section 53 of the *Regional Planning Interests Act 2014*)

Description of the land

Real property description: Lot 1 SP133822 and Lot 3 B122

Local Government Area: Bulloo and Quilpie Shire Councils

Approved resource activities

The approved resource activities are set out in Table 1 below.

Definition of the approved resource activities are provided in Table 2 below.

This development approval authorises impacts on the Channel Country Strategic Environmental Area (designated precinct) by the approved resource activities.

Table 1: Approved resource activities – Santos – Leghorn 1, Jarrar 7 & 8, Wallis 1

Area of regional interest	Location	Resource activity	Area of disturbance (hectares)
Leghorn 1 Well Site & Associated Infrastructure			
Channel Country Strategic Environmental Area (designated precinct) (SEA)	Lot 1 on SP133822	Single well pad	1.0
		Gas pipeline	1.7
		Access tracks	2.5
		Borrow pit	1.3
Disturbance area			6.5 ha
Jarrar 7 and 8 Well Site & Associated Infrastructure			
Channel Country Strategic Environmental Area (designated precinct) (SEA)	Lot 3 on B122	Multi-well pad	2.1
		Oil pipeline	0.2
		Access track	0.9
		Borrow pit	0.9
Disturbance area			4.1 ha
Wallis 1 Well Site & Associated Infrastructure			
Channel Country Strategic Environmental Area (designated precinct) (SEA)	Lot 3 on B122	Single well pad	0.9
		Oil pipeline	2.0
		Access track	3.6
		Borrow pit	2.2
Disturbance area			8.7 ha
Total disturbance area			19.3 ha

*Resource activities and area of disturbance are authorised under ATP1189 and EA EPPG03518215

Table 2: Definition of approved resource activities

Resource activity	Definition
Well pad (including lease and spoil area)	An area used to provide a stable platform for drilling/workover rigs and the operation of the petroleum well, accommodating modular drilling and ancillary equipment, including a well riser, well head and various piping, valving, instrumentation and controls.
Linear infrastructure (gas and oil pipelines and access)	<ul style="list-style-type: none"> • Leghorn 1 gas flowline - a 114.3 mm diameter steel gas flowline/pipeline buried underneath the ground and used to transport petroleum.. • Jarrar 7 & 8 oil flowline - 73.02 mm diameter above-ground steel pipeline sections raised approximately 200mm above ground level on pre-fabricated supports and used to transport oil. • Wallis 1 oil flowline - 88.90 mm diameter above-ground steel pipeline sections raised approximately 200mm above ground level on pre-fabricated supports and used to transport oil. • Operational corridors with a maximum width of approximately 3 metres, for pipeline access and maintenance activities. • Access tracks constructed in a manner that facilitates the passage of water keeping with existing hydrology.
Borrow pit	<ul style="list-style-type: none"> • A source of shallow earthen material excavated to provide material for well lease and access track maintenance.

Regional interests conditions

A person who is the holder of, or is acting under, this RIDA must not contravene a condition of this approval.

Condition number	Condition	Timing for condition
1.	Carry out the approved resource activity and disturbance of land in the Channel Country Strategic Environmental Area (designated precinct) generally in accordance with: <ul style="list-style-type: none"> (a) the resource activities identified in Table 1: Approved resource activities (b) the resource activities defined in Table 2: Definitions of resource activities (c) the stamped approved plans (Attachment 1): <ul style="list-style-type: none"> (i) Figure 1: Leghorn 1, File No. ENVIR 849a 64bit.wor, dated 6 March 2020, prepared by Santos (ii) Figure 2: Wallis 1, Jarrar 7 & 8, File No. ENVIR 849b 64bit.wor, dated 5 March 2020, prepared by Santos 	At all times.
2.	No workover activities are to be undertaken: <ul style="list-style-type: none"> (a) when surface water is present (b) during a flood event/inundation period. 	As indicated.
3.	Implement measures to minimise the diversion of overland flow during the maintenance and operation of the resource activities.	At all times.

Condition number	Condition	Timing for condition
4.	<p>Develop and implement erosion and sediment controls which:</p> <ul style="list-style-type: none"> (a) allows stormwater to pass through or around the site in a controlled manner and at non-erosive flow velocities (b) minimise soil erosion resulting from wind, rain and flowing water (c) minimise the duration that disturbed soils are exposed to the erosive forces of wind, rain and flowing water (d) minimise work-related soil erosion and sediment runoff (e) minimise negative impacts to land adjacent to the resource activity. 	At all times.
5.	<p>Contaminants from the resource activities must not be directly or indirectly released to waters (including groundwater) in the Channel Country Strategic Environmental Area (designated precinct).</p> <p><i>Note: Contaminants mean waste contaminants as defined in Schedule 9 of the Environmental Protection Regulation 2008.</i></p>	At all times.
6.	Restore disturbance areas to a pre-activity condition.	Within two months of completion of resource activity.
7.	<p>Retain records of the pre-disturbance, post-reinstatement and post-restoration condition of disturbance areas and provide these to the chief executive (RPIAct@dsmip.qld.gov.au application reference number RPI20/023), demonstrating that the impacted land within the Channel Country Strategic Environmental Area (designated precinct) has been returned to its pre-disturbance condition. Such records must include:</p> <ul style="list-style-type: none"> (a) photographs of the pre-disturbance site conditions (b) photographs of the post-reinstatement site conditions (c) photographs of the post-restoration site conditions (d) evidence with the records (date and GPS stamped) required by parts (a) to (c) of this condition. <p><i>Note:</i></p> <p><i>'disturbance' - means any impact to the landscape, vegetation, air quality, hydrology, habitat, or water quality that has been directly or indirectly caused by human activity associated with the resource activity.</i></p> <p><i>'pre-disturbance' - given the resource activity is established, the condition of the land immediately adjoining the resource activity (being a representative reference point of the state of the disturbance areas before any resource activity occurred).</i></p> <p><i>'post-reinstatement' - following the completion of the resource activity, being the return of the soil to its previous profile,</i></p>	Within three months of completing all post-restoration works.

Condition number	Condition	Timing for condition
	<p><i>topography and drainage</i></p> <p><i>'post-restoration' - this is the point at which the ground cover has been established and ponding, erosion, subsidence, etc has been dealt with (being a longer process than the reinstatement phase).</i></p>	
8.	<p>(a) All complaints received, and resulting actions taken, about the impact of the approved resource activities on the environmental attributes in the Channel Country Strategic Environmental Area must be recorded. The record must include:</p> <ul style="list-style-type: none"> (i) name, address and contact number of the complainant (ii) time and date of complaint (iii) reasons for the complaint (iv) investigations undertaken (v) conclusions formed (vi) actions taken to resolve the complaint (vii) any abatement measures implemented (viii) person responsible for resolving the complaint. <p>(b) The records of any complaints received and recorded in accordance with this condition must be provided to the chief executive at RPIAct@dsmip.qld.gov.au.</p> <p><i>Note: The record of complaint provided to the chief executive must state the application reference number, being RPI20/023.</i></p>	<p>(a) At all times.</p> <p>(b) Within three business days of receipt of a complaint.</p>
9.	A full copy of the regional interests development approval must be kept on-site and available to any person(s) contracted to undertake the approved resource activities.	At all times

General Advice

It is the applicant's responsibility to ensure all relevant approvals and licenses are obtained from the applicable Local, State, and/or Federal Authorities prior to works commencing on site.

Attachment 1 - Approved plans

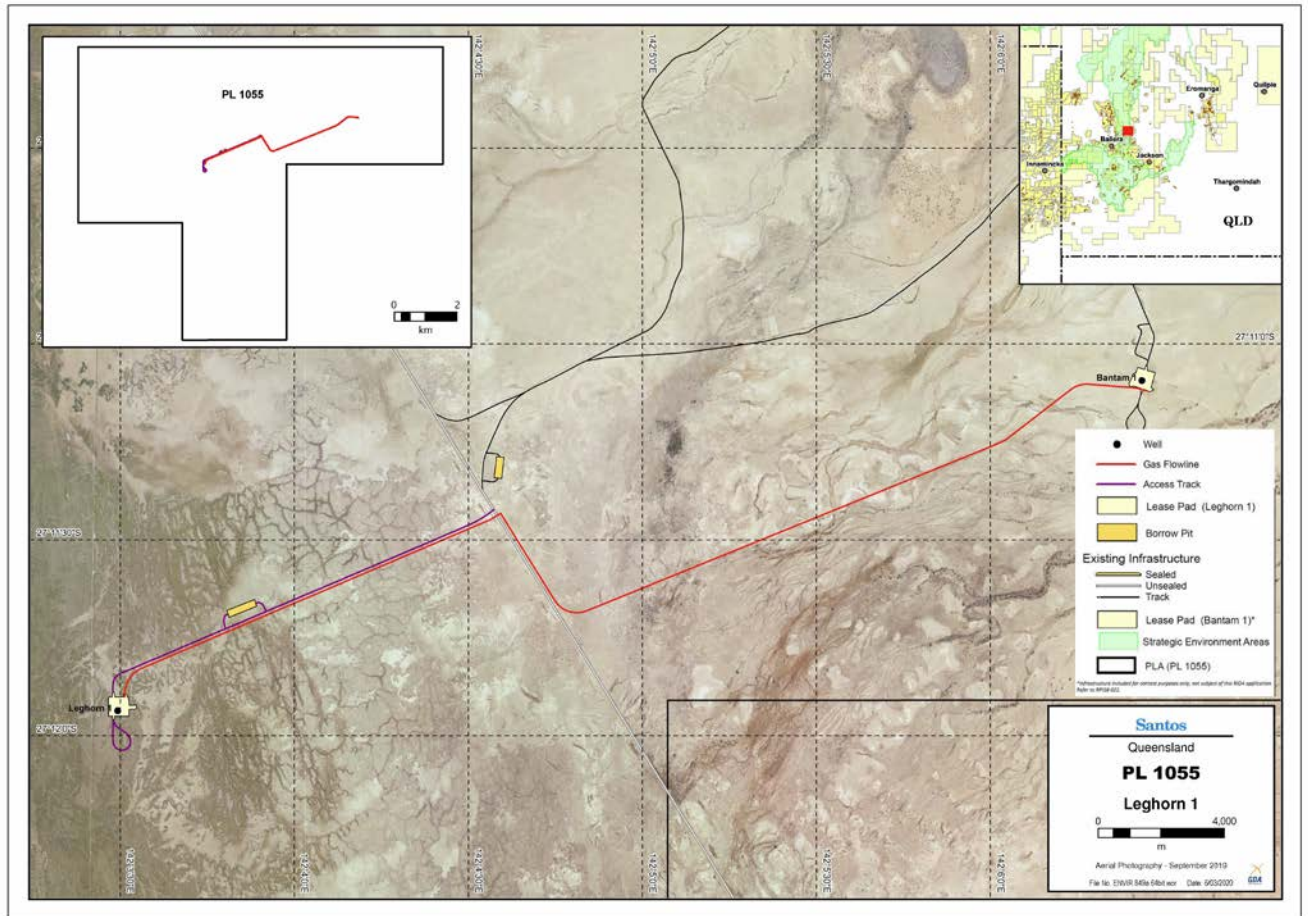


Figure 1: Location of resource activities – Leghorn 1 site

PLANS AND DOCUMENTS referred to in the RIDA



Ref: RPI20/023 Santos – Leghorn 1, Jarrar 7 & 8, Wallis 1
Date: 12 May 2020

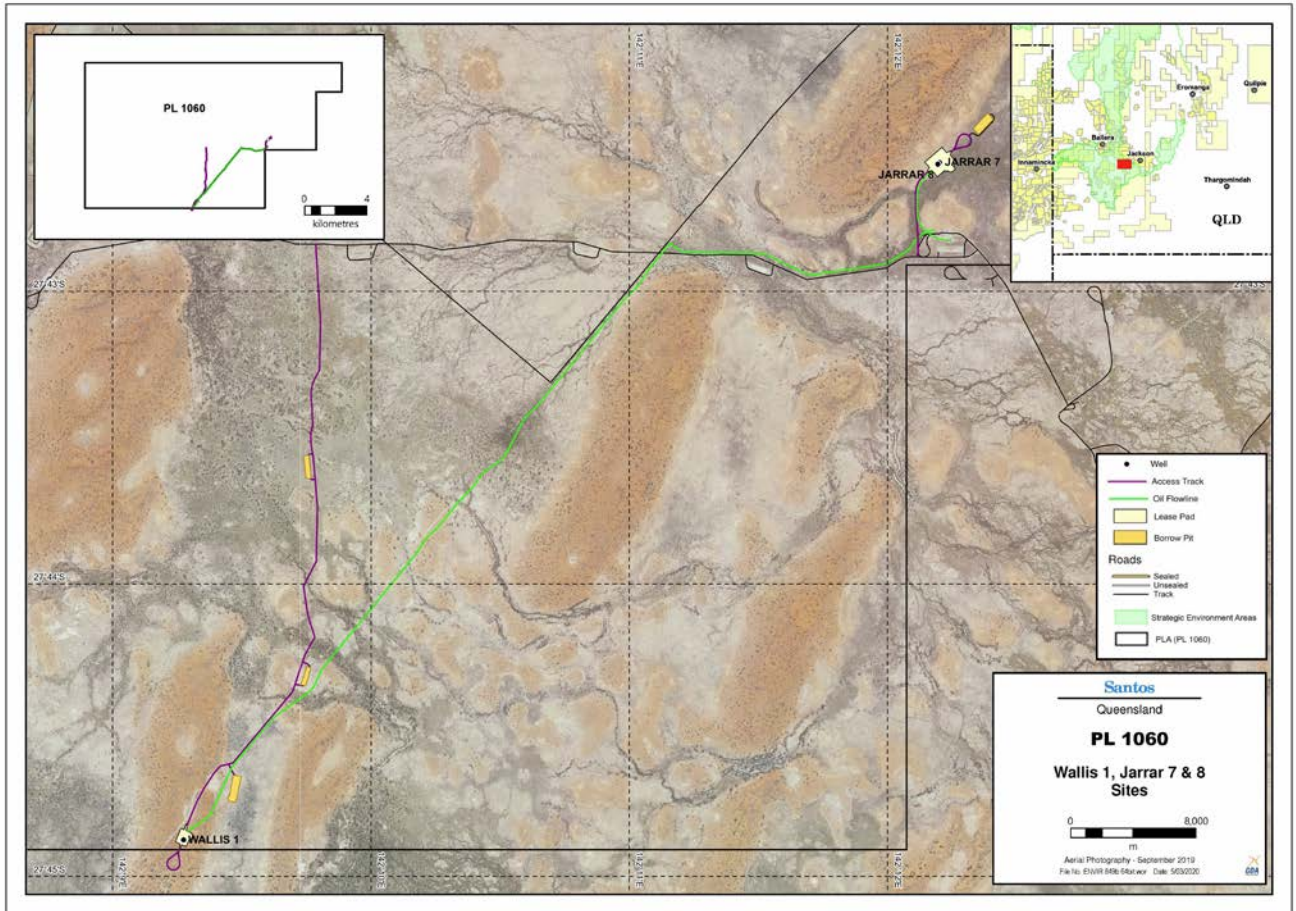


Figure 2: Location of resource activities - Wallis 1, Jarrar 7 & 8 sites

PLANS AND DOCUMENTS
referred to in the RIDA

Ref: RPI20/023 Santos – Leghorn 1, Jarrar 7 & 8, Wallis 1

Date: 12 May 2020

