

REGIONAL INTERESTS DEVELOPMENT APPROVAL (RIDA) - 28 April 2020

RPI20/001 Santos – Hector South East

(Given under section 53 of the *Regional Planning Interests Act 2014*)

Description of the land

Real property description: Lot 2528 on PH429

Local Government Area: Bulloo Shire Council

Approved resource activities

The approved resource activities are set out in Table 1 below.

Definitions of the approved resource activities are provided in Table 2 below.

This development approval authorises impacts on the Channel Country Strategic Environmental Area (designated precinct) by the approved resource activities.

Table 1: Approved resource activities – Santos – Hector South East

Area of regional interest	Location	Resource activity	Area of disturbance (hectares)
Channel Country Strategic Environmental Area (designated precinct) (SEA)	Lot 2528 on PH429	Petroleum well (including lease and spoil area)	1.6
		Linear infrastructure (buried gas flowline and access)	9.5
		Borrow pit	0.7
Total			11.8 ha

Table 2: Definitions of approved resource activities

Resource activities	Definition
Petroleum well (including lease and spoil area)	<ul style="list-style-type: none"> An area used to provide a stable platform for drilling/workover rigs and the operation of the petroleum well, accommodating modular drilling and ancillary equipment, including a derrick, power generators, pipe handling equipment, tanks, drilling sumps and associated stockpile, flares and office and amenities areas.
Linear infrastructure (buried gas flowline and access)	<ul style="list-style-type: none"> A 100 mm diameter steel pipeline buried underneath the ground and used to transport petroleum, with a maximum length of 3.15 kilometres and a maximum right of way of 16 metres A midline riser approximately 1.8 kilometres from the proposed well lease and a pig launcher 1,160 metres of additional cleared access track, with a maximum

	width of 13 metres, constructed of earthen material.
Borrow pit	<ul style="list-style-type: none"> A source of shallow earthen material excavated to provide material for well lease and access track maintenance.

Regional interests conditions

A person who is the holder of, or is acting under, this RIDA must not contravene a condition of this approval.

Condition number	Condition	Timing for condition
1.	<p>Carry out the approved resource activities and disturbance of land in the Channel Country Strategic Environmental Area (designated precinct) generally in accordance with:</p> <p>(a) the resource activities identified in Table 1: Approved resource activities</p> <p>(b) the resource activities defined in Table 2: Definitions of resource activities</p> <p>(c) the stamped approved plan:</p> <p>(i) Figure 1: Hector South East Infrastructure, File No. QLDGEN 1145, prepared by Santos, dated January 2020 (Attachment 1)</p> <p>(j) Figure 2: Outer construction boundary for potential relocation of non-linear infrastructure (Attachment 1)</p>	At all times.
2.	<p>No construction activities are to be undertaken:</p> <p>(a) when surface water is present</p> <p>(b) during a flood event/inundation period.</p>	As indicated.
3.	Implement measures to minimise the diversion of overland flow during the maintenance and operation of the resource activities.	At all times.
4.	<p>Develop and implement erosion and sediment controls which:</p> <p>(a) allows stormwater to pass through or around the site in a controlled manner and at non-erosive flow velocities</p> <p>(b) minimise soil erosion resulting from wind, rain and flowing water</p> <p>(c) minimise the duration that disturbed soils are exposed to the erosive forces of wind, rain and flowing water</p> <p>(d) minimise work-related soil erosion and sediment runoff</p> <p>(e) minimise negative impacts to land adjacent to the resource activity.</p>	At all times.
5.	<p>Contaminants from the resource activities must not be directly or indirectly released to waters (including groundwater) in the Channel Country Strategic Environmental Area (designated precinct).</p> <p><i>Note: Contaminants mean waste contaminants as defined in Schedule 9 of the Environmental Protection Regulation 2008.</i></p>	At all times.

Condition number	Condition	Timing for condition
6.	Construction and abandonment of petroleum wells to be in accordance with the Department of Natural Resources, Mines and Energy's Code of Practice 'For the construction and abandonment of coal seam gas and petroleum wells in Queensland, Petroleum and Gas Inspectorate'	At all times during construction and abandonment.
7.	<p>(a) Restore disturbance areas to a pre-activity condition, other than those disturbance areas associated with additional access tracks left in place for future use, subject to agreement with the landowner.</p> <p>(b) Provide records of any agreement referred to in (a) to the chief executive at RPIAct@dsmip.qld.gov.au</p> <p><i>Note: The record of complaint provided to the chief executive must state the application reference number, being RPI20/001.</i></p>	<p>(a) Within six months of completion of resource activity.</p> <p>(b) Within one month of the agreement being reached.</p>
8.	<p>Retain records of the pre-disturbance, post-reinstatement and post-restoration condition of disturbance areas and provide these to the chief executive (RPIAct@dsmip.qld.gov.au application reference number RPI20/002), demonstrating that the impacted land within the Channel Country Strategic Environmental Area (designated precinct) has been returned to its pre-disturbance condition. Such records must include:</p> <p>(a) photographs of the pre-disturbance site conditions</p> <p>(b) photographs of the post-reinstatement site conditions</p> <p>(c) photographs of the post-restoration site conditions</p> <p>(d) evidence with the records (date and GPS stamped) required by parts (a) to (c) of this condition.</p> <p><i>Note:</i></p> <p><i>'disturbance' - means any impact to the landscape, vegetation, air quality, hydrology, habitat, or water quality that has been directly or indirectly caused by human activity associated with the resource activity.</i></p> <p><i>'pre-disturbance' - given the resource activity is established, the condition of the land immediately adjoining the resource activity (being a representative reference point of the state of the disturbance areas before any resource activity occurred).</i></p> <p><i>'post-reinstatement' - following the completion of the resource activity, being the return of the soil to its previous profile, topography and drainage</i></p> <p><i>'post-restoration' - this is the point at which the ground cover has been established and ponding, erosion, subsidence, etc has been dealt with (being a longer process than the reinstatement phase).</i></p>	Within three months of completing all post-restoration works.
9.	(c) All complaints received, and resulting actions taken, about the impact of the approved resource activities on	(c) At all times.

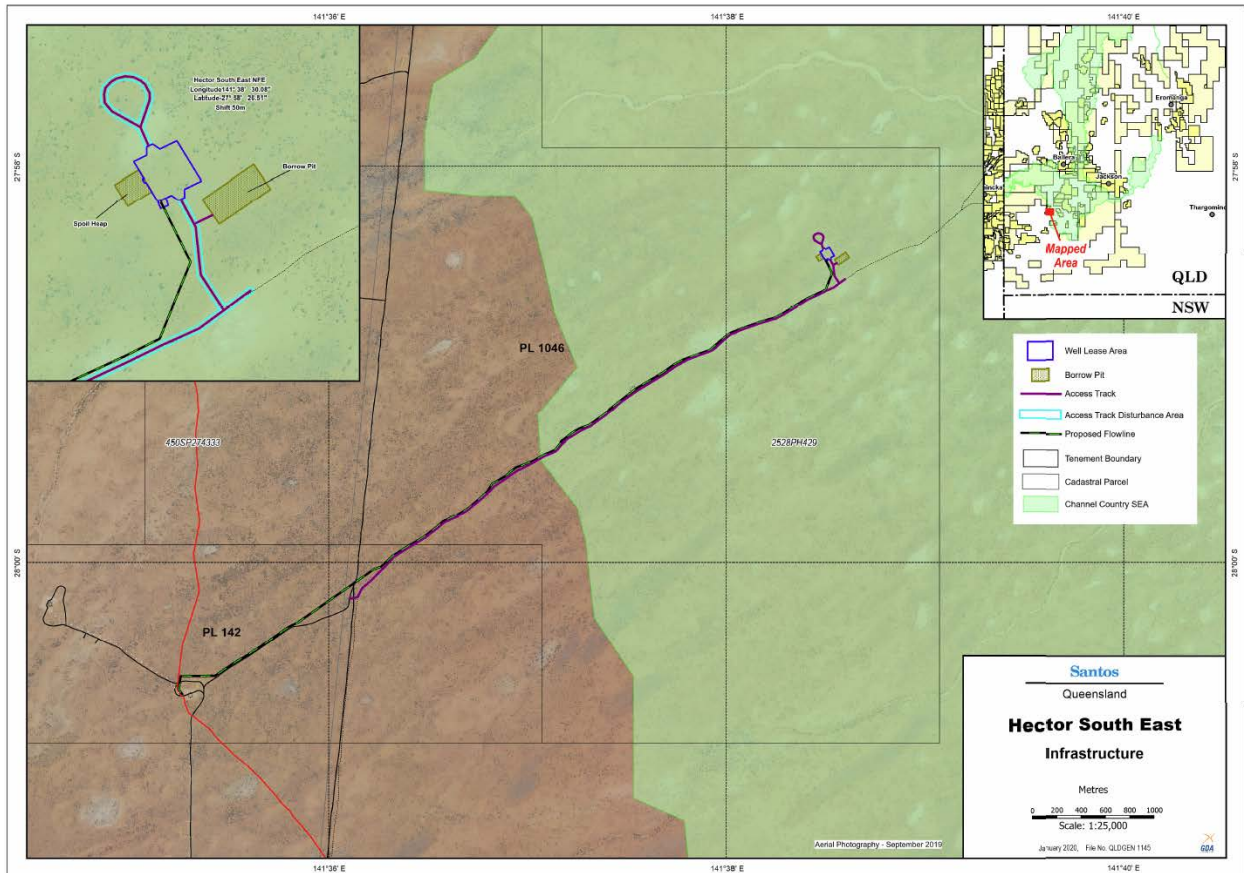
Condition number	Condition	Timing for condition
	<p>the environmental attributes in the Channel Country Strategic Environmental Area must be recorded. The record must include:</p> <ul style="list-style-type: none"> (i) name, address and contact number of the complainant (ii) time and date of complaint (iii) reasons for the complaint (iv) investigations undertaken (v) conclusions formed (vi) actions taken to resolve the complaint (vii) any abatement measures implemented (viii) person responsible for resolving the complaint. <p>(d) Provide records of any complaints received and recorded in accordance with this condition to the chief executive at RPIAct@dsdmip.qld.gov.au.</p> <p><i>Note: The record of complaint provided to the chief executive must state the application reference number, being RPI20/001.</i></p>	(d) Within three business days of receipt of a complaint.
10.	A full copy of the regional interests development approval must be kept on-site and available to any person(s) contracted to undertake the approved resource activities.	At all times

General Advice

It is the applicant's responsibility to ensure all relevant approvals and licenses are obtained from the applicable Local, State, and/or Federal Authorities prior to works commencing on site.

Attachment 1 - Approved plans

Figure 1 – Hector South East Infrastructure



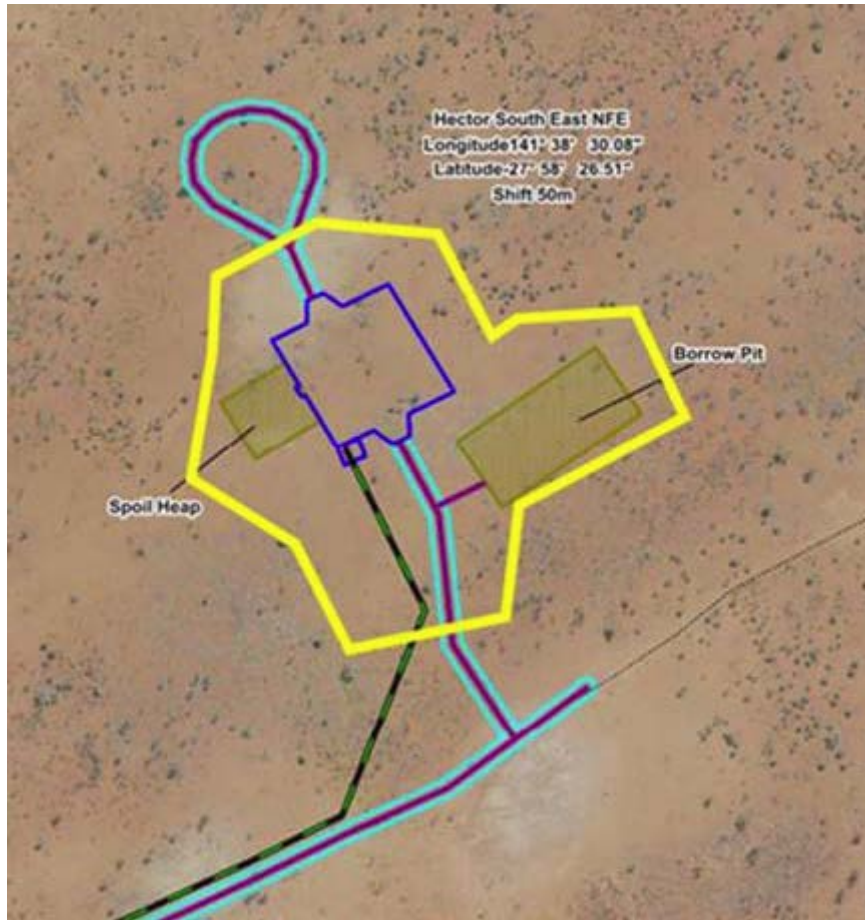
PLANS AND DOCUMENTS referred to in the RIDA



Ref: RPI20/001 Hector South East

Date: 28 April 2020

Figure 2: Outer construction boundary for potential relocation of non-linear infrastructure



PLANS AND DOCUMENTS
referred to in the RIDA



Ref: RPI20/001 Hector South East

Date: 28 April 2020