

# FITZROY TO GLADSTONE PIPELINE PROJECT

## ALTON DOWNS TO RAGLAN PIPELINE : 34100 COVER SHEET

### GENERAL

DRAWING No.	TITLE
30032656-DWG-34100-G-4000	COVER SHEET

### CIVIL WORKS

DRAWING No.	TITLE
30032656-DWG-34100-C-4001	KEY PLAN - SHEET 1
30032656-DWG-34100-C-4002	KEY PLAN - SHEET 2
30032656-DWG-34100-C-4003	KEY PLAN - SHEET 3
30032656-DWG-34100-C-4018	LAYOUT PLAN - SHEET 1
30032656-DWG-34100-C-4019	LAYOUT PLAN - SHEET 2
30032656-DWG-34100-C-4020	LAYOUT PLAN - SHEET 3
30032656-DWG-34100-C-4021	LAYOUT PLAN - SHEET 4
30032656-DWG-34100-C-4022	LAYOUT PLAN - SHEET 5
30032656-DWG-34100-C-4023	LAYOUT PLAN - SHEET 6
30032656-DWG-34100-C-4024	LAYOUT PLAN - SHEET 7
30032656-DWG-34100-C-4025	LAYOUT PLAN - SHEET 8
30032656-DWG-34100-C-4026	LAYOUT PLAN - SHEET 9
30032656-DWG-34100-C-4027	LAYOUT PLAN - SHEET 10
30032656-DWG-34100-C-4028	LAYOUT PLAN - SHEET 11
30032656-DWG-34100-C-4029	LAYOUT PLAN - SHEET 12
30032656-DWG-34100-C-4030	LAYOUT PLAN - SHEET 13
30032656-DWG-34100-C-4031	LAYOUT PLAN - SHEET 14
30032656-DWG-34100-C-4032	LAYOUT PLAN - SHEET 15
30032656-DWG-34100-C-4033	LAYOUT PLAN - SHEET 16
30032656-DWG-34100-C-4034	LAYOUT PLAN - SHEET 17
30032656-DWG-34100-C-4035	LAYOUT PLAN - SHEET 18
30032656-DWG-34100-C-4036	LAYOUT PLAN - SHEET 19
30032656-DWG-34100-C-4037	LAYOUT PLAN - SHEET 20
30032656-DWG-34100-C-4038	LAYOUT PLAN - SHEET 21
30032656-DWG-34100-C-4039	LAYOUT PLAN - SHEET 22
30032656-DWG-34100-C-4040	PLAN AND LONG SECTION - GENERAL NOTES AND LEGEND

### GEOTECHNICAL

DRAWING No.	TITLE
30032656-DWG-34100-U-4190	RIDGELANDS ROAD CROSSING - PLAN AND LONG SECTION
30032656-DWG-34100-U-4191	CAPRICORN HIGHWAY CROSSING - PLAN AND LONG SECTION
30032656-DWG-34100-U-4192	BRUCE HIGHWAY / YEPPEN RAIL LINE CROSSING - PLAN & LONG SECTION
30032656-DWG-34100-U-4193	BAJOOL RAIL SIDING CROSSING - PLAN AND LONG SECTION
30032656-DWG-34100-U-4194	INKERMAN CREEK CROSSING - PLAN AND LONG SECTION
30032656-DWG-34100-U-4195	HORRIGAN CREEK CROSSING - PLAN AND LONG SECTION
30032656-DWG-34100-U-4196	RAGLAN CREEK CROSSING - PLAN AND LONG SECTION
30032656-DWG-34100-U-4197	GAVIAL CREEK CROSSING - PLAN AND LONG SECTION
30032656-DWG-34100-U-4198	BOB'S CREEK CROSSING - PLAN AND LONG SECTION
30032656-DWG-34100-U-4199	BAJOOL PORT ALMA ROAD CROSSING - PLAN AND LONG SECTION
30032656-DWG-34100-U-4200	RAIL LINE CROSSING LOT 2RP603319 - PLAN AND LONG SECTION
30032656-DWG-34100-U-4201	LION LAGOON CREEK CROSSING - PLAN AND LONG SECTION

PLANS AND DOCUMENTS  
referred to in the  
SDA APPROVAL



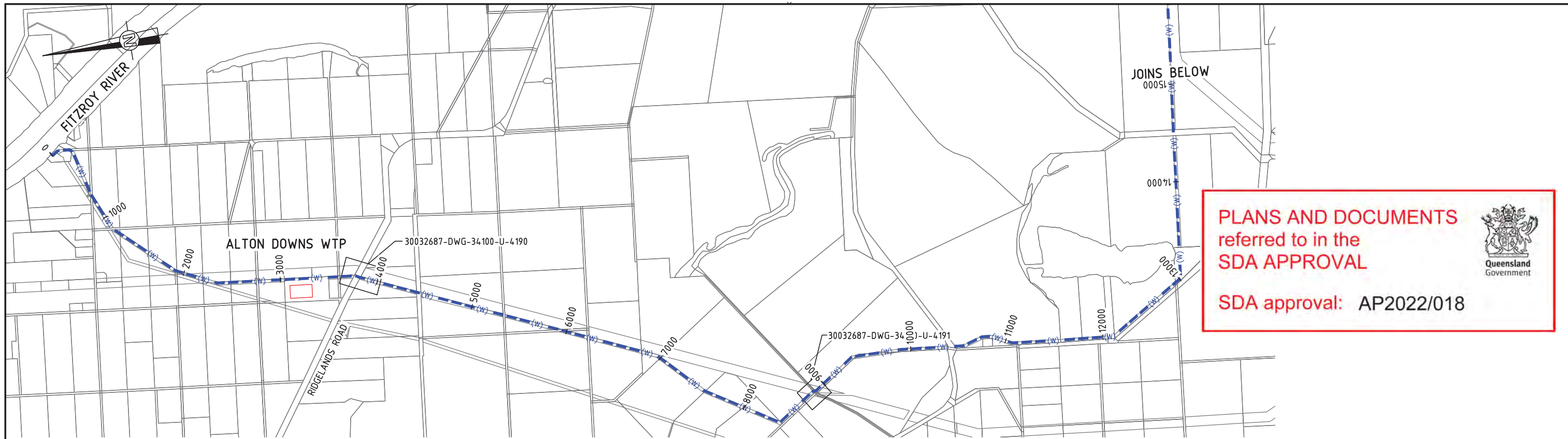
SDA approval: AP2022/018

NOTE  
1. FOR SMEC'S DISCLAIMER REFER DRAWING  
30032687-DWG-32000-G-0112

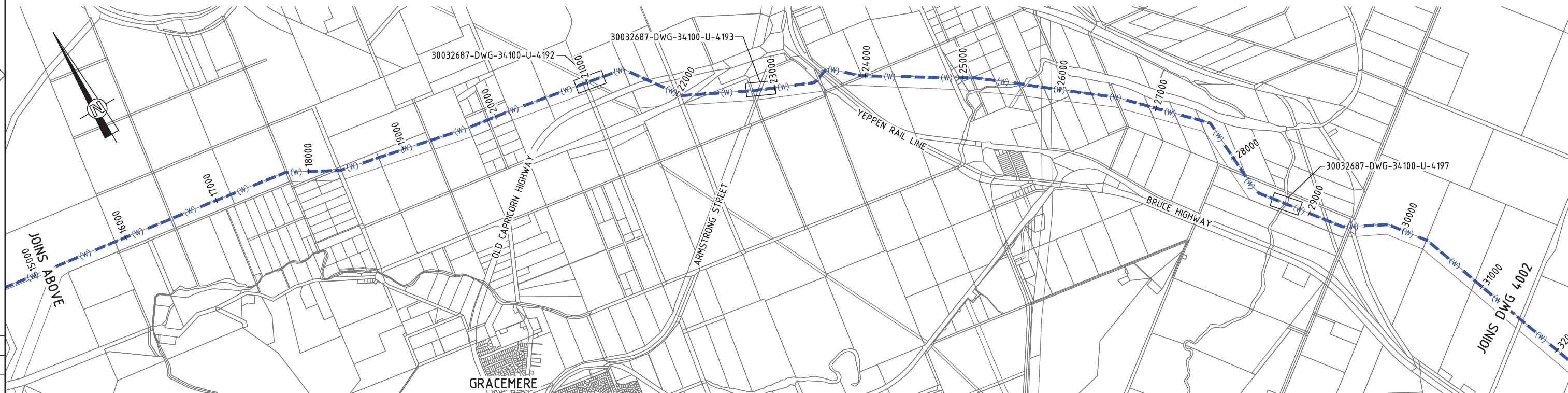
**NOT FOR CONSTRUCTION**

150 mm ON ORIGINAL  
A1  
0 10 20 30 40 50 60 70 80 90 100 110 120 130 140 150

DRAWING FILE LOCATION / NAME V:\_Vault\Projects\3003\30032687\GFP-DE Project\110_CADD\CAD\DWG\0130 GL\34100 ALTON DOWNS TO RAGLAN PIPELINE\30032687-DWG-34100-G-4000.dwg		PLLOT DATE 21 Nov 2022	TIME 15:16:49									PROJECT TITLE FITZROY TO GLADSTONE PIPELINE PROJECT 30GLA - ALTON DOWNS TO RAGLAN PIPELINE GENERAL COVER SHEET				
EXTERNAL REFERENCE FILES K_30032687_SMEC_A1		REV	DATE	AMENDMENT / REVISION DESCRIPTION	WVR No.	APPROVAL	TITLE	NAME	SCALES AT A1 SIZE DRAWING		DESIGNER Member of the Surbana Jurong Group © ABN 47 065 475 149 LEVEL 6, 480 ST PAULS TERRACE FORTITUDE VALLEY QLD 4006 SMEC PROJECT No 30032687	CLIENT 	SCALE	PHASE CONCEPT DESIGN	PROJECT / DRAWING No. 30032687-DWG-34100-G-4000	REVISION D
	A	20.08.21		30% CONCEPT DESIGN	006	MSL	DRAFTER	SUCHITH.R								
	B	14.01.22		CONCEPT DESIGN-ECI PHASE	006	MSL	DRAFTING CHECK	C.BOU								
	C	30.06.22		OPTIMISED CONCEPT DESIGN	006	MSL	DESIGNER	J.WAGENAAR								
	D	18.11.22		UPDATED RIGHT OF WAY	037	MSL	DESIGN CHECK	M.SERRANO LOPEZ								
							PROJECT MANAGER	M.SERRANO LOPEZ								
							PROJECT DIRECTOR	D.TAYLOR								



LOCALITY PLAN - 1



LOCALITY PLAN - 2

NOTE  
 1. FOR SMEC'S DISCLAIMER REFER DRAWING 30032687-DWG-32000-G-0112

**NOT FOR CONSTRUCTION**

DRAWING FILE LOCATION / NAME V:\_Vault\Projects\3003\30032687\GFP-DE Project\110_CADD\CAD\DWG\01 30 GL\34100 ALTON DOWNS TO RAGLAN PIPELINE\30032687-DWG-34100-C-4001.dwg		PLOT DATE 21 Nov 2022		TIME 13:03:08	
EXTERNAL REFERENCE FILES X_30032687_SMEC_A1 X_DCD	REV	DATE	AMENDMENT / REVISION DESCRIPTION	MWR No.	APPROVAL
	A	20.08.21	30% CONCEPT DESIGN	006	MSL
	B	14.01.22	CONCEPT DESIGN-ECI PHASE	006	MSL
	C	30.06.22	OPTIMISED CONCEPT DESIGN	006	MSL
	D	18.11.22	UPDATED RIGHT OF WAY	037	MSL

DESIGNER	NAME
DRAFTER	SUCHITH.R
DRAFTING CHECK	C.BOU
DESIGNER	J.WAGENAAR
DESIGN CHECK	M.SERRANO LOPEZ
PROJECT MANAGER	M.SERRANO LOPEZ
PROJECT DIRECTOR	D.TAYLOR

SCALES AT A1 SIZE DRAWING

SCALE 1 : 40000 (A3) : 20000 (A1)

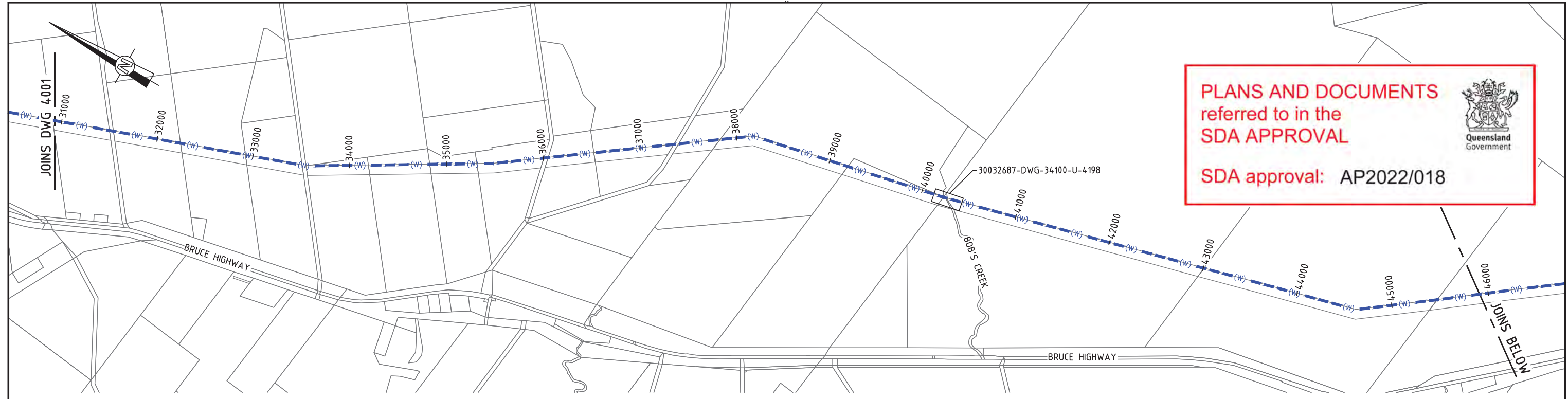
DESIGNER

Member of the Surbana Jurong Group  
 © ABN 47 065 475 149  
 LEVEL 6, 480 ST PAULS TERRACE  
 FORTITUDE VALLEY QLD 4006  
 SMEC PROJECT No 30032687

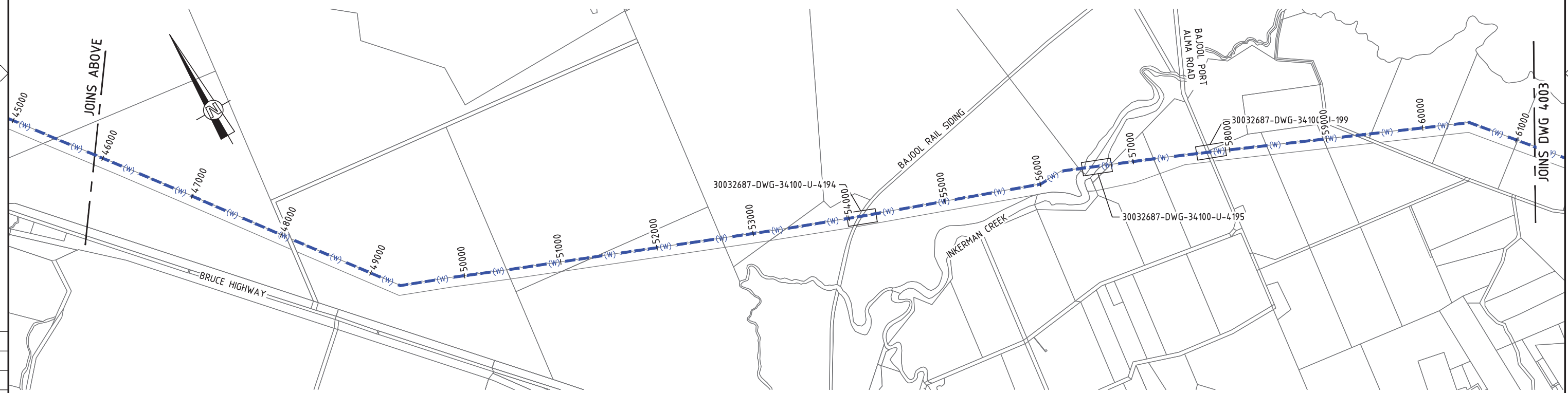
CLIENT

PROJECT TITLE FITZROY TO GLADSTONE PIPELINE PROJECT 30GLA - ALTON DOWNS TO RAGLAN PIPELINE			
KEY PLAN SHEET 1			
SCALE	PHASE	PROJECT / DRAWING No.	REVISION
	CONCEPT DESIGN	30032687-DWG-34100-C-4001	D

150 mm ON ORIGINAL  
 A1  
 0 10 20 30 40 50 60 70 80 90 100 110 120 130 140 150



LOCALITY PLAN - 3



LOCALITY PLAN - 4

NOTE  
 1. FOR SMEC'S DISCLAIMER REFER DRAWING 30032687-DWG-32000-G-0112

**NOT FOR CONSTRUCTION**

DRAWING FILE LOCATION / NAME V:\_Vault\Projects\3003\30032687\GFP-DE Project\110_CADD\CAD\DWG\01 30 GL\34100 ALTON DOWNS TO RAGLAN PIPELINE\30032687-DWG-34100-C-4002.dwg		PLOT DATE 21 Nov 2022		TIME 13:03:39	
EXTERNAL REFERENCE FILES X_30032687_SMEC_A1 X_0208	REV	DATE	AMENDMENT / REVISION DESCRIPTION	WVR No.	APPROVAL
	A	20.08.21	30% CONCEPT DESIGN	006	MSL
	B	14.01.22	CONCEPT DESIGN-ECI PHASE	006	MSL
	C	30.06.22	OPTIMISED CONCEPT DESIGN	006	MSL
	D	18.11.22	UPDATED RIGHT OF WAY	037	MSL

DESIGNER	NAME
DRAFTER	SUCHITH.R
DRAFTING CHECK	C.BOU
DESIGNER	J.WAGENAAR
DESIGN CHECK	M.SERRANO LOPEZ
PROJECT MANAGER	M.SERRANO LOPEZ
PROJECT DIRECTOR	D.TAYLOR

SCALES AT A1 SIZE DRAWING
SCALE 0 200 400 600 800 1000m 1 : 40000 (A3) : 20000 (A1)

DESIGNER



Member of the Surbana Jurong Group  
 © ABN 47 065 475 149  
 LEVEL 6, 480 ST PAULS TERRACE  
 FORTITUDE VALLEY QLD 4006  
 SMEC PROJECT No 30032687

CLIENT

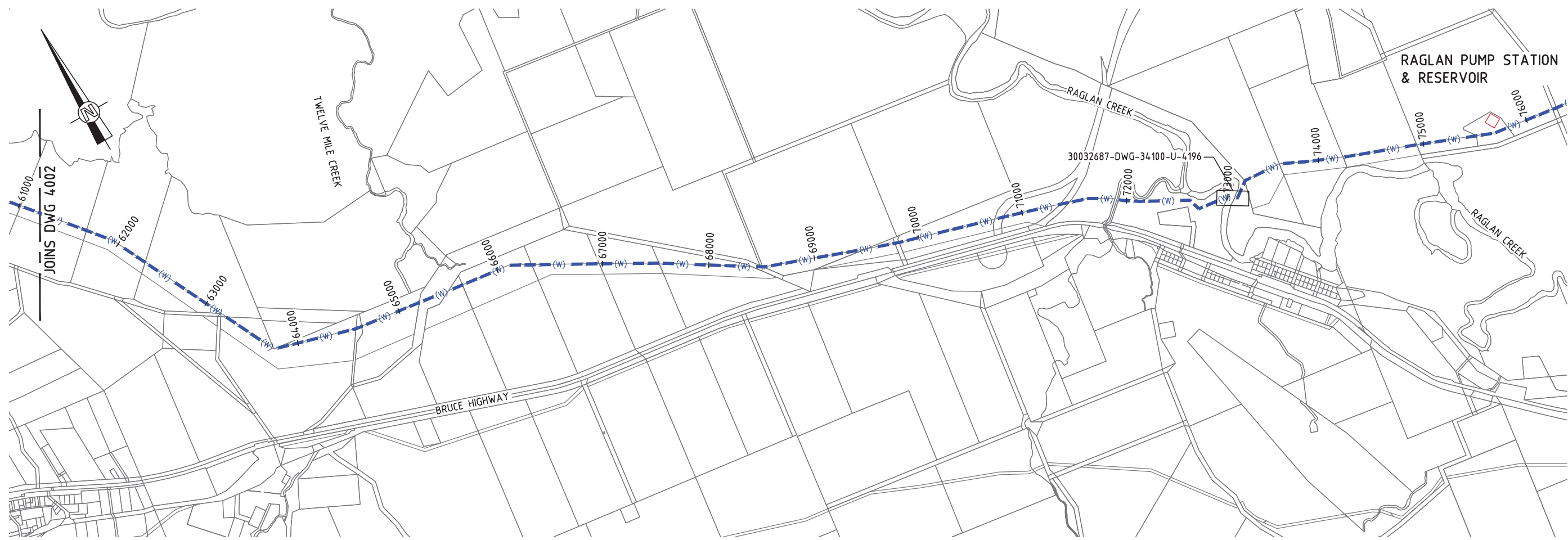


Gladstone Area Water Board

PROJECT TITLE FITZROY TO GLADSTONE PIPELINE PROJECT 30GLA - ALTON DOWNS TO RAGLAN PIPELINE			
KEY PLAN SHEET 2			
SCALE	PHASE	PROJECT / DRAWING No.	REVISION
	CONCEPT DESIGN	30032687-DWG-34100-C-4002	D

150 mm ON ORIGINAL


A1



LOCALITY PLAN - 5

**PLANS AND DOCUMENTS**  
referred to in the  
**SDA APPROVAL**

SDA approval: AP2022/018



**NOTE**  
1. FOR SMEC'S DISCLAIMER REFER DRAWING  
30032687-DWG-32000-G-0112

**NOT FOR CONSTRUCTION**

150 mm ON ORIGINAL  
A1

DRAWING FILE LOCATION / NAME V:\_Vault\Projects\3003\30032687\GFP-DE Project\110_CADD\CAD\DWG\01 30 GL\34100 ALTON DOWNS TO RAGLAN PIPELINE\30032687-DWG-34100-C-4003.dwg		PLOT DATE 21 Nov 2022		TIME 13:04:16	
------------------------------------------------------------------------------------------------------------------------------------------------------------------------------	--	--------------------------	--	------------------	--

REV	DATE	AMENDMENT / REVISION DESCRIPTION	WVR No.	APPROVAL	TITLE	NAME
A	20.08.21	30% CONCEPT DESIGN	006	MSL	DRAFTER	SUCHITH.R
B	14.01.22	CONCEPT DESIGN-ECI PHASE	006	MSL	DRAFTING CHECK	C.BOU
C	30.06.22	OPTIMISED CONCEPT DESIGN	006	MSL	DESIGNER	J.WAGENAAR
D	18.11.22	UPDATED RIGHT OF WAY	037	MSL	DESIGN CHECK	M.SERRANO LOPEZ
					PROJECT MANAGER	M.SERRANO LOPEZ
					PROJECT DIRECTOR	D.TAYLOR

EXTERNAL REFERENCE FILES X_30032687_SMEC_A1 X_DCD	
---------------------------------------------------------	--

SCALES AT A1 SIZE DRAWING	
SCALE	0 200 400 600 800 1000m 1 : 40000 (A3) : 20000 (A1)

DESIGNER



Member of the Surbana Jurong Group  
© ABN 47 065 475 149  
LEVEL 6, 480 ST PAULS TERRACE  
FORTITUDE VALLEY QLD 4006  
SMEC PROJECT No 30032687

CLIENT




Gladstone Area Water Board

PROJECT TITLE FITZROY TO GLADSTONE PIPELINE PROJECT 30GLA - ALTON DOWNS TO RAGLAN PIPELINE <b>KEY PLAN SHEET 3</b>			
SCALE	PHASE CONCEPT DESIGN	PROJECT / DRAWING No. 30032687-DWG-34100-C-4003	REVISION D



**PLANS AND DOCUMENTS**  
referred to in the  
**SDA APPROVAL**



SDA approval: AP2022/018

**LEGEND**

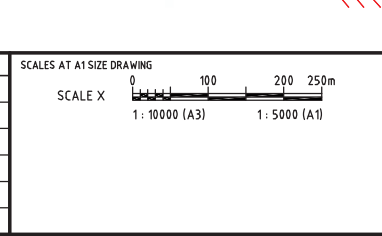
	CADASTRAL APPROXIMATION PROVIDED BY AAM HATCH
	ALIGNMENT BASED ON CORRIDOR APPROXIMATION
	PROPERTY DESCRIPTION
	CAV COMBINATION AIR VALVE - REFER DWG 0207 FOR DETAILS
	SPV SURGE PROTECTION AIR VALVE - REFER DWG 0207 FOR DETAILS
	SCV SCOUR VALVE - REFER DWG 0208 FOR DETAILS
	IV ISOLATION VALVE - REFER DWG 0211 FOR DETAILS
	FC FUTURE CONNECTION - REFER DWG 0202 FOR DETAILS
	RIGHT OF WAY

**NOTE**  
1. FOR SMEC'S DISCLAIMER REFER DRAWING  
30032687-DWG-32000-G-0112

**NOT FOR CONSTRUCTION**

DRAWING FILE LOCATION / NAME V:\_Vault\Projects\3003\30032687\GFP-DE Project\110_CADD\CAD\DWG\01 30 GL\34100 ALTON DOWNS TO RAGLAN PIPELINE\30032687-DWG-34100-C-4022.dwg		PLOT DATE 21 Nov 2022		TIME 14:18:19	
EXTERNAL REFERENCE FILES	REV	DATE	AMENDMENT / REVISION DESCRIPTION	MWR No.	APPROVAL
X_5000_DWG_LEGEND	A	20.08.21	30% CONCEPT DESIGN	006	MSL
X_30032656_SHEC_A1	B	14.01.22	CONCEPT DESIGN-ECI PHASE	006	MSL
X_VALVES	C	30.06.22	OPTIMISED CONCEPT DESIGN	006	MSL
X_CONTOUR 1m INTERVAL	D	18.11.22	UPDATED RIGHT OF WAY	037	MSL
X_DWG					
SS_30032687_GFP_Aerial Image					
X_30032687_GFP_Aerial Image_1					
X_30032687_GFP_Alignment_2022					
X_30032687_GFP_ROW					

DESIGNER	SUCHITH.R
DRAFTING CHECK	C.BOU
DESIGNER	J.WAGENAAR
DESIGN CHECK	M.SERRANO LOPEZ
PROJECT MANAGER	M.SERRANO LOPEZ
PROJECT DIRECTOR	D.TAYLOR



DESIGNER



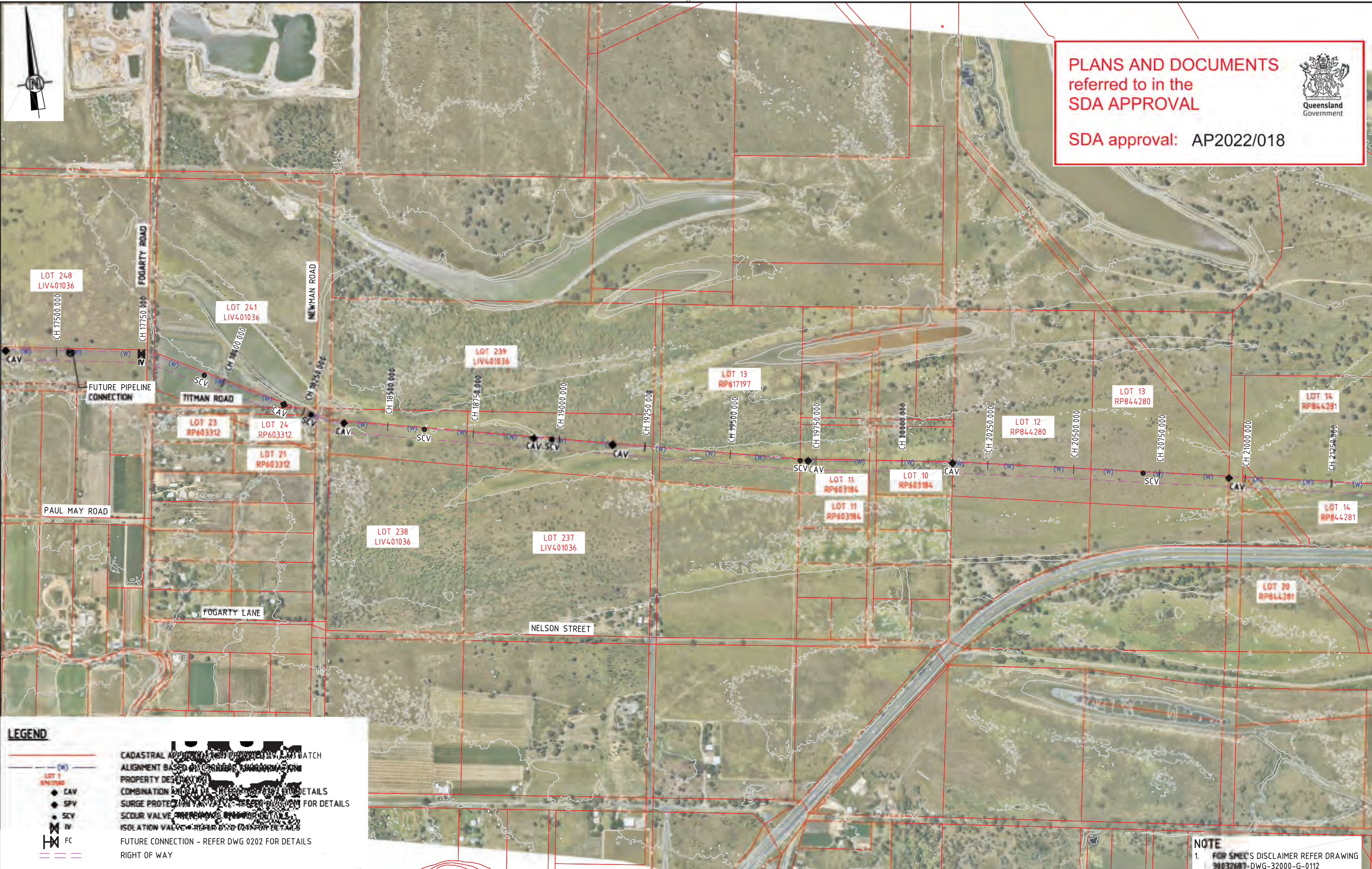
Members of the Suez Canal Group  
© ABN 47 065 475 149  
LEVEL 6, 480 ST PAULS TERRACE  
FORTITUDE VALLEY QLD 4006  
SMEC PROJECT No 30032687

CLIENT




PROJECT TITLE FITZROY TO GLADSTONE PIPELINE PROJECT 30GLA - ALTON DOWNS TO RAGLAN PIPELINE LAYOUT PLAN CH14500 TO CH18000 SHEET 5			
SCALE 1:5000	PHASE CONCEPT DESIGN	PROJECT / DRAWING No. 30032687-DWG-34100-C-4022	REVISION D

150 mm ON ORIGINAL  
A1



**PLANS AND DOCUMENTS**  
referred to in the  
**SDA APPROVAL**

SDA approval: AP2022/018



**LEGEND**

- (W) CADASTRAL APPROVALS - REFER DWG 0202 FOR DETAILS
- LOT 1 SPV/SCV ALIGNMENT BASED ON CONCEPT DESIGN AND PROPERTY DESCRIPTION
- CAV COMBINATION OF CAV AND SCV - REFER DWG 0202 FOR DETAILS
- SPV SURGE PROTECTION VALVE - REFER DWG 0202 FOR DETAILS
- SCV SCOUR VALVE - REFER DWG 0202 FOR DETAILS
- IV ISOLATION VALVE - REFER DWG 0202 FOR DETAILS
- FC FUTURE CONNECTION - REFER DWG 0202 FOR DETAILS
- RIGHT OF WAY

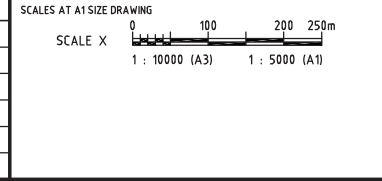
**NOTE**  
1. FOR SMEC'S DISCLAIMER REFER DRAWING 30032687-DWG-32000-G-0112

**NOT FOR CONSTRUCTION**

DRAWING FILE LOCATION / NAME V:\_Vault\Projects\3003\30032687\GFP-DE Project\110_CADD\CAD\DWG\01 30 GL\34100 ALTON DOWNS TO RAGLAN PIPELINE\30032687-DWG-34100-C-4023.dwg		PLOT DATE 21 Nov 2022		TIME 14:31:39	
REV	DATE	AMENDMENT / REVISION DESCRIPTION	MWR No.	APPROVAL	TITLE
A	20.08.21	30% CONCEPT DESIGN	006	MSL	DRAFTER <i>SUCHITH.R</i>
B	14.01.22	CONCEPT DESIGN-ECI PHASE	006	MSL	DRAFTING CHECK <i>C.BOU</i>
C	30.06.22	OPTIMISED CONCEPT DESIGN	006	MSL	DESIGNER <i>J.W.AGENAAR</i>
D	18.11.22	UPDATED RIGHT OF WAY	037	MSL	DESIGN CHECK <i>M.SERRANO LOPEZ</i>
					PROJECT MANAGER <i>M.SERRANO LOPEZ</i>
					PROJECT DIRECTOR <i>D.TAYLOR</i>

EXTERNAL REFERENCE FILES

X_5000_DWG_LEGEND
X_30032687_SHEC_A1
X_VALVES
X_CONTOUR 1m INTERVAL
X_DWG
SS_30032687_GFP_Aerial Image
X_30032687_GFP_Aerial Image_1
X_30032687_GFP_ROW
X_30032687_GFP_Alignment_2022



DESIGNER



MEMBER OF THE SARGENT & JUDY GROUP  
© ABN 47 065 475 149  
LEVEL 6, 480 ST PAULS TERRACE  
FORTITUDE VALLEY QLD 4006  
SMEC PROJECT No 30032687

CLIENT

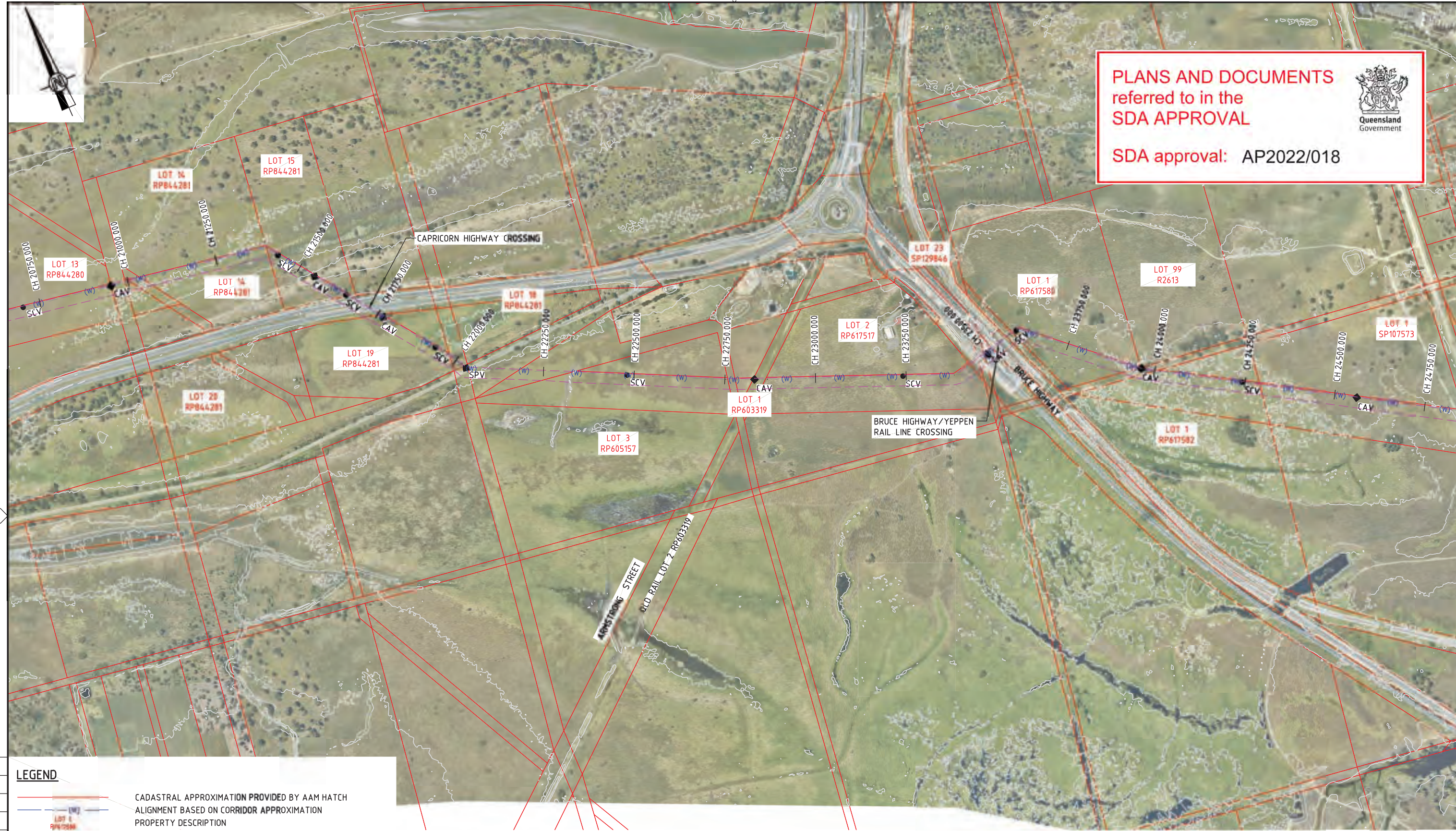


PROJECT TITLE FITZROY TO GLADSTONE PIPELINE PROJECT 30GLA - ALTON DOWNS TO RAGLAN PIPELINE LAYOUT PLAN CH18000 TO CH21500 SHEET 6			
SCALE 1:5000	PHASE CONCEPT DESIGN	PROJECT / DRAWING No. 30032687-DWG-34100-C-4023	REVISION D

150 mm ON ORIGINAL  
A1

**PLANS AND DOCUMENTS**  
referred to in the  
**SDA APPROVAL**

SDA approval: AP2022/018



150 mm ON ORIGINAL  
140  
130  
120  
110  
100  
90  
80  
70  
60  
50  
40  
30  
20  
10  
0

**LEGEND**

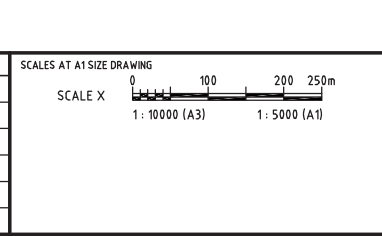
- CADASTRAL APPROXIMATION PROVIDED BY AAM HATCH
- ALIGNMENT BASED ON CORRIDOR APPROXIMATION
- PROPERTY DESCRIPTION
- CAV COMBINATION AIR VALVE - REFER DWG 0207 FOR DETAILS
- SPV SURGE PROTECTION AIR VALVE - REFER DWG 0207 FOR DETAILS
- SCV SCOUR VALVE - REFER DWG 0208 FOR DETAILS
- IV ISOLATION VALVE - REFER DWG 0211 FOR DETAILS
- FC FUTURE CONNECTION - REFER DWG 0202 FOR DETAILS
- RIGHT OF WAY

**NOTE**  
1. FOR SMEC'S DISCLAIMER REFER DRAWING 30032687-DWG-32000-G-0112

**NOT FOR CONSTRUCTION**

DRAWING FILE LOCATION / NAME V:\_Vault\Projects\3003\30032687\GFP-DE Project\110_CADD\CAD\DWG\01 30 GL\34100 ALTON DOWNS TO RAGLAN PIPELINE\30032687-DWG-34100-C-4024.dwg		PLOT DATE 21 Nov 2022		TIME 14:40:05	
EXTERNAL REFERENCE FILES	REV	DATE	AMENDMENT / REVISION DESCRIPTION	MWR No.	APPROVAL
X_5000_DWG_LEGEND	A	20.08.21	30% CONCEPT DESIGN	006	MSL
X_30032687_SHEC_A1	B	14.01.22	CONCEPT DESIGN-ECI PHASE	006	MSL
X_04208	C	30.06.22	OPTIMISED CONCEPT DESIGN	006	MSL
X_VALVES	D	18.11.22	UPDATED RIGHT OF WAY	037	MSL
X_CONTENTION_INT_INTERVAL					
SS_30032687_GFP_Aerial_Image					
X_30032687_GFP_Aerial_Image_1					
X_30032687_GFP_ROW					
X_30032687_GFP_Alignment_2022					

DESIGNER	SUCHITH.R
DRAFTING CHECK	C.BOU
DESIGNER	J.W.AGENAAR
DESIGN CHECK	M.SERRANO LOPEZ
PROJECT MANAGER	M.SERRANO LOPEZ
PROJECT DIRECTOR	D.TAYLOR

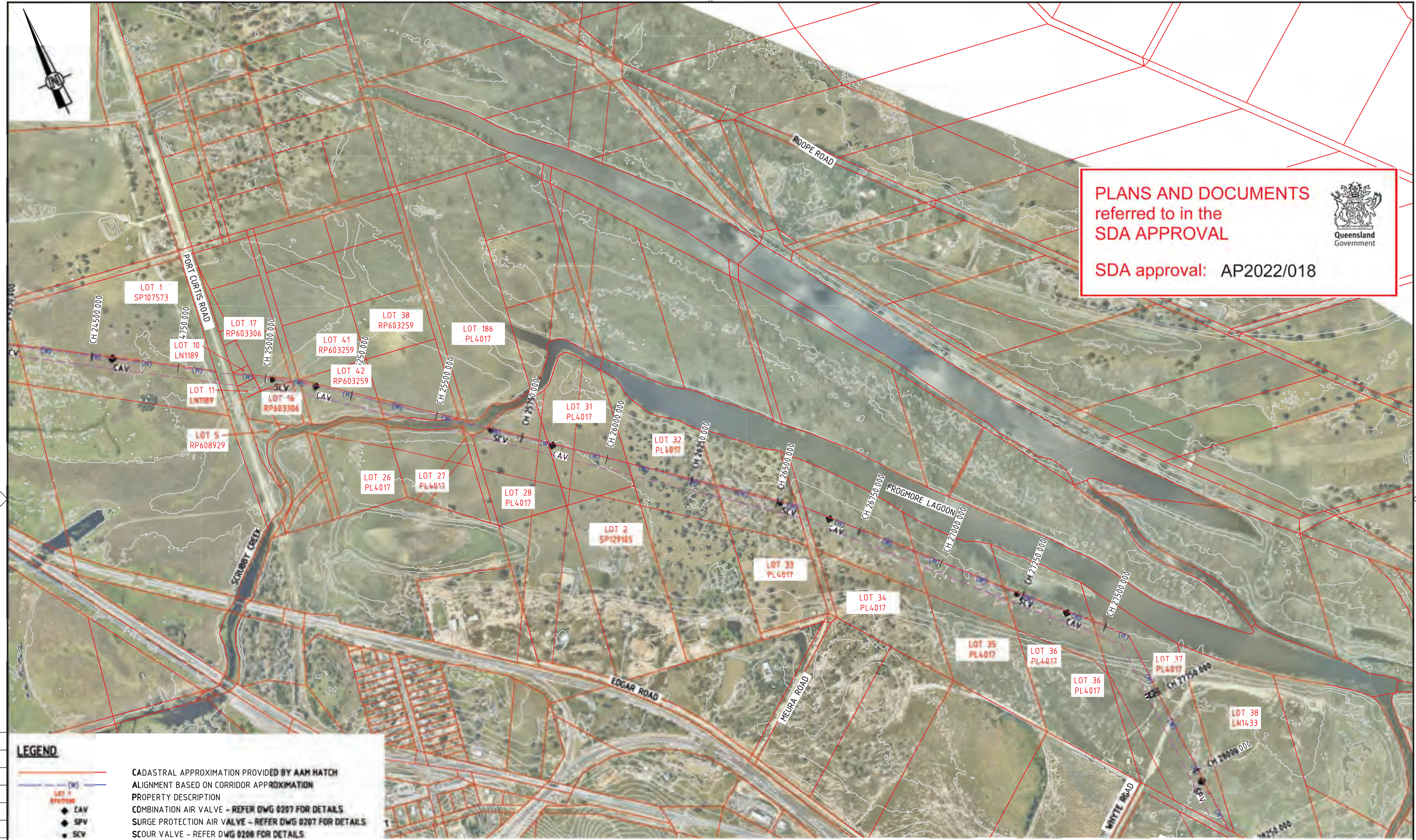


DESIGNER

Member of the Saurburt Group  
© ABN 47 065 475 149  
LEVEL 6, 480 ST PAULS TERRACE  
FORTITUDE VALLEY QLD 4006  
SMEC PROJECT No 30032687


CLIENT

PROJECT TITLE FITZROY TO GLADSTONE PIPELINE PROJECT 30GLA - ALTON DOWNS TO RAGLAN PIPELINE LAYOUT PLAN CH21500 TO CH25000 SHEET 7			
SCALE 1:5000	PHASE CONCEPT DESIGN	PROJECT / DRAWING No. 30032687-DWG-34100-C-4024	REVISION D



**PLANS AND DOCUMENTS**  
referred to in the  
**SDA APPROVAL**

**SDA approval: AP2022/018**



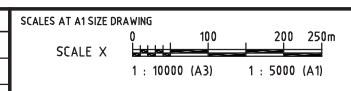
LEGEND	
	CADASTRAL APPROXIMATION PROVIDED BY AAM HATCH
	ALIGNMENT BASED ON CORRIDOR APPROXIMATION
	LOT 1 APPROXIMATION
	CAV
	SPV
	SCV
	IV
	FC
	RIGHT OF WAY
PROPERTY DESCRIPTION COMBINATION AIR VALVE - REFER DWG 0207 FOR DETAILS SURGE PROTECTION AIR VALVE - REFER DWG 0207 FOR DETAILS SCOUR VALVE - REFER DWG 0208 FOR DETAILS ISOLATION VALVE - REFER DWG 0211 FOR DETAILS FUTURE CONNECTION - REFER DWG 0202 FOR DETAILS	

**NOTE**  
1. FOR SMEC'S DISCLAIMER REFER DRAWING 30032687-DWG-32000-G-0112

**NOT FOR CONSTRUCTION**

150 mm ON ORIGINAL  
A1

DRAWING FILE LOCATION / NAME		PLOT DATE		TIME	
V:\_Vault\Projects\3003\30032687\GFP-DE Project\110_CADD\CAD\DWG\01 30 GL\34100 ALTON DOWNS TO RAGLAN PIPELINE\30032687-DWG-34100-C-4025.dwg		21 Nov 2022		14:49:31	
EXTERNAL REFERENCE FILES	REV	DATE	AMENDMENT / REVISION DESCRIPTION	MWR No.	APPROVAL
X_5000_DWG_LEGEND X_30032687_SHEC_A1 X_VALUES X_CONTOUR 1m INTERVAL X_30032687_GFP_Aerial Image X_30032687_GFP_Aerial Image_2 X_30032687_GFP_Aerial Image_1 X_30032687_GFP_ROW X_30032687_GFP_Alignment_2022 X_0208	A	20.08.21	30% CONCEPT DESIGN	006	MSL
	B	14.01.22	CONCEPT DESIGN-ECI PHASE	006	MSL
	C	30.06.22	OPTIMISED CONCEPT DESIGN	006	MSL
	D	18.11.22	UPDATED RIGHT OF WAY	037	MSL
DESIGNER	NAME	DESIGN CHECK	PROJECT MANAGER	PROJECT DIRECTOR	
	SUCHITH.R	C.BOU	M.SERRANO LOPEZ	D.TAYLOR	



DESIGNER



Member of the Saurburt Group  
© ABN 47 065 475 149  
LEVEL 6, 480 ST PAULS TERRACE  
FORTITUDE VALLEY QLD 4006  
SMEC PROJECT No 30032687

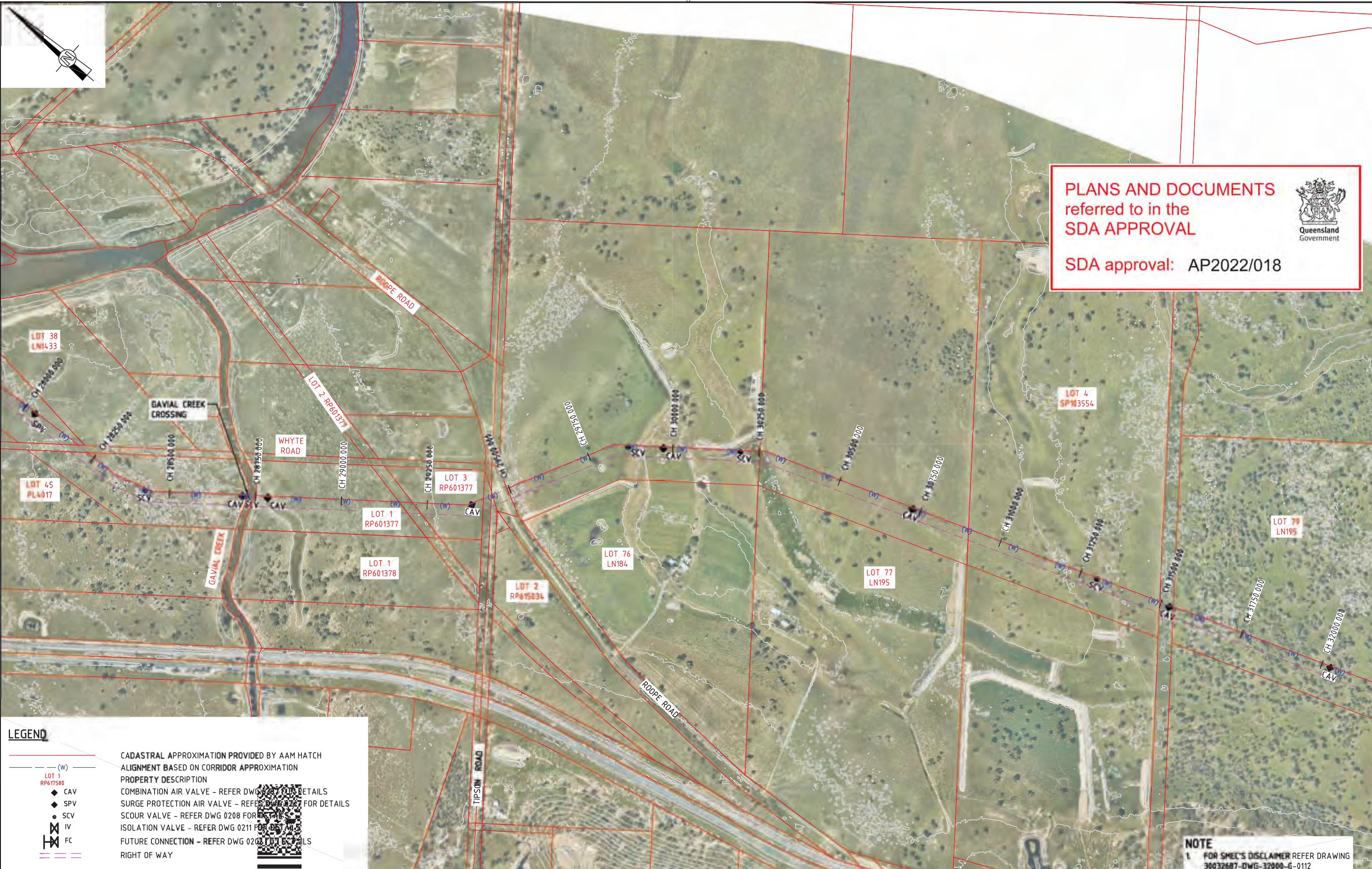
CLIENT



Gladstone Area Water Board


PROJECT TITLE			
FITZROY TO GLADSTONE PIPELINE PROJECT 30GLA - ALTON DOWNS TO RAGLAN PIPELINE LAYOUT PLAN CH25000 TO CH28500 SHEET 8			
SCALE	PHASE	PROJECT / DRAWING No.	REVISION
1:5000	CONCEPT DESIGN	30032687-DWG-34100-C-4025	D





PLANS AND DOCUMENTS referred to in the SDA APPROVAL


SDA approval: AP2022/018



**LEGEND**

— (W) — CADASTRAL APPROXIMATION PROVIDED BY AAM HATCH  
 — ALIGNMENT BASED ON CORRIDOR APPROXIMATION  
 — PROPERTY DESCRIPTION

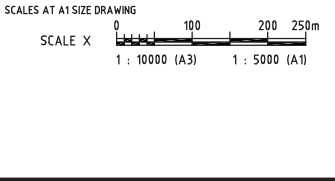
◆ CAV COMBINATION AIR VALVE - REFER DWG 0208 FOR DETAILS  
 ◆ SPV SURGE PROTECTION AIR VALVE - REFER DWG 0207 FOR DETAILS  
 ◆ SCV SCOUR VALVE - REFER DWG 0208 FOR DETAILS  
 ◆ IV ISOLATION VALVE - REFER DWG 0211 FOR DETAILS  
 ◆ FC FUTURE CONNECTION - REFER DWG 0208 FOR DETAILS  
 --- RIGHT OF WAY



**NOTE**  
 1. FOR SMEC'S DISCLAIMER REFER DRAWING 30032687-DWG-32000-G-0112

**NOT FOR CONSTRUCTION**

DRAWING FILE LOCATION / NAME V:\_Vault\Projects\3003\30032687\GFP-DE Project\110_CADD\CAD\DWG\01 30 GL\34100 ALTON DOWNS TO RAGLAN PIPELINE\30032687-DWG-34100-C-4026.dwg		PLOT DATE 21 Nov 2022		TIME 15:15:02			
EXTERNAL REFERENCE FILES	REV	DATE	AMENDMENT / REVISION DESCRIPTION	MWR No.	APPROVAL	TITLE	NAME
X_5000_DWG_LEGEND	A	20.08.21	30% CONCEPT DESIGN	006	MSL	DRAFTER	SUCHITH.R
X_30032687_SHEC_A1	B	14.01.22	CONCEPT DESIGN-ECI PHASE	006	MSL	DRAFTING CHECK	C.BOU
X_VALVES	C	30.06.22	OPTIMISED CONCEPT DESIGN	006	MSL	DESIGNER	J.W.AGENAAR
X_CONTOUR Int Image	D	18.11.22	UPDATED RIGHT OF WAY	037	MSL	DESIGN CHECK	M.SERRANO LOPEZ
X_30032687_GFP_Aerial Image						PROJECT MANAGER	M.SERRANO LOPEZ
X_30032687_GFP_Alignment_2022						PROJECT DIRECTOR	D.TAYLOR
X_30032687_GFP_Aerial Image_2							
X_30032687_GFP_ROW							
X_DCB							



DESIGNER



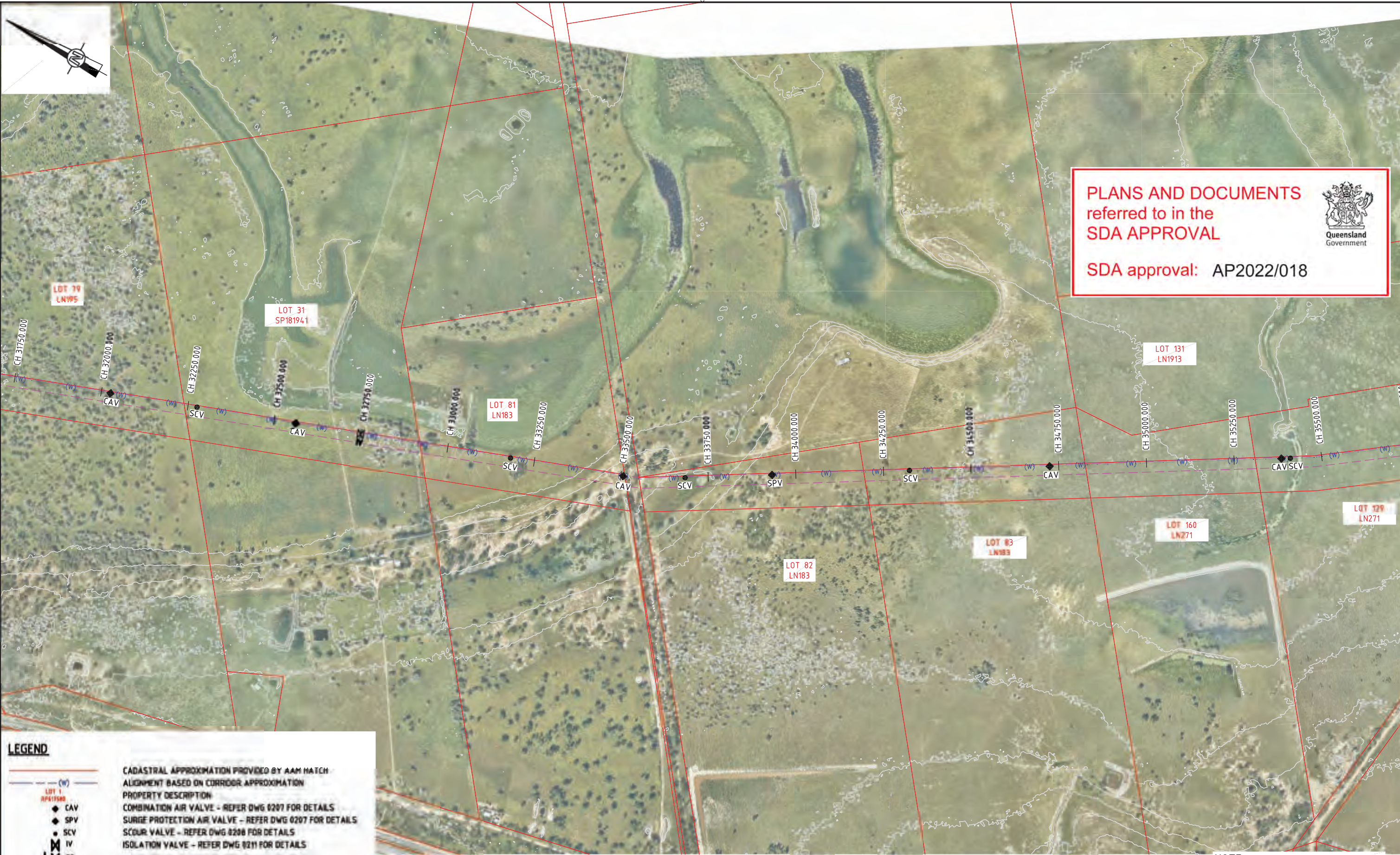
Member of the Saurburt Group  
 © ABN 47 065 475 149  
 LEVEL 6, 480 ST PAULS TERRACE  
 FORTITUDE VALLEY QLD 4006  
 SMEC PROJECT No 30032687

CLIENT




PROJECT TITLE FITZROY TO GLADSTONE PIPELINE PROJECT 30GLA - ALTON DOWNS TO RAGLAN PIPELINE LAYOUT PLAN CH28500 TO CH32500 SHEET 9			
SCALE 1:5000	PHASE CONCEPT DESIGN	PROJECT / DRAWING No. 30032687-DWG-34100-C-4026	REVISION D

150 mm ON ORIGINAL  
A1



**PLANS AND DOCUMENTS**  
referred to in the  
**SDA APPROVAL**

**SDA approval: AP2022/018**



**LEGEND**

— (W) — CADASTRAL APPROXIMATION PROVIDED BY AAM MATCH  
ALIGNMENT BASED ON CORRIDOR APPROXIMATION

**PROPERTY DESCRIPTION:**  
 ◆ CAV COMBINATION AIR VALVE - REFER DWG 0207 FOR DETAILS  
 ◆ SPV SURGE PROTECTION AIR VALVE - REFER DWG 0207 FOR DETAILS  
 ◆ SCV SCOUR VALVE - REFER DWG 0208 FOR DETAILS  
 ◆ IV ISOLATION VALVE - REFER DWG 0211 FOR DETAILS  
 ◆ FC FUTURE CONNECTION - REFER DWG 0202 FOR DETAILS

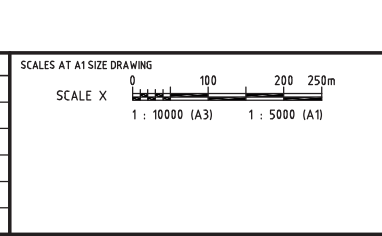
--- RIGHT OF WAY

**NOTE**  
1. FOR SMEC'S DISCLAIMER REFER DRAWING 30032687-DWG-32000-G-0112

**NOT FOR CONSTRUCTION**

DRAWING FILE LOCATION / NAME V:\_Vault\Projects\3003\30032687\GFP-DE Project\110_CADD\CAD\DWG\01 30 GL\34100 ALTON DOWNS TO RAGLAN PIPELINE\30032687-DWG-34100-C-4027.dwg		PLOT DATE 21 Nov 2022		TIME 15:24:23	
EXTERNAL REFERENCE FILES	REV	DATE	AMENDMENT / REVISION DESCRIPTION	MWR No.	APPROVAL
X_5000_DWG_LEGEND	A	20.08.21	30% CONCEPT DESIGN	006	MSL
X_30032687_SHEC_A1	B	14.01.22	CONCEPT DESIGN-ECI PHASE	006	MSL
X_VALVES	C	30.06.22	OPTIMISED CONCEPT DESIGN	006	MSL
X_CONTOUR 1m INTERVAL	D	18.11.22	UPDATED RIGHT OF WAY	037	MSL
X_FC					
SS_30032687_GFP_Aerial Image					
X_30032687_GFP_Aerial Image_2					
X_30032687_GFP_ROW					
X_30032687_GFP_Alignment_2022					

DESIGNER	SUCHITH.R
DRAFTING CHECK	C.BOU
DESIGNER	J.W.AGENAAR
DESIGN CHECK	M.SERRANO LOPEZ
PROJECT MANAGER	M.SERRANO LOPEZ
PROJECT DIRECTOR	D.TAYLOR



**DESIGNER**



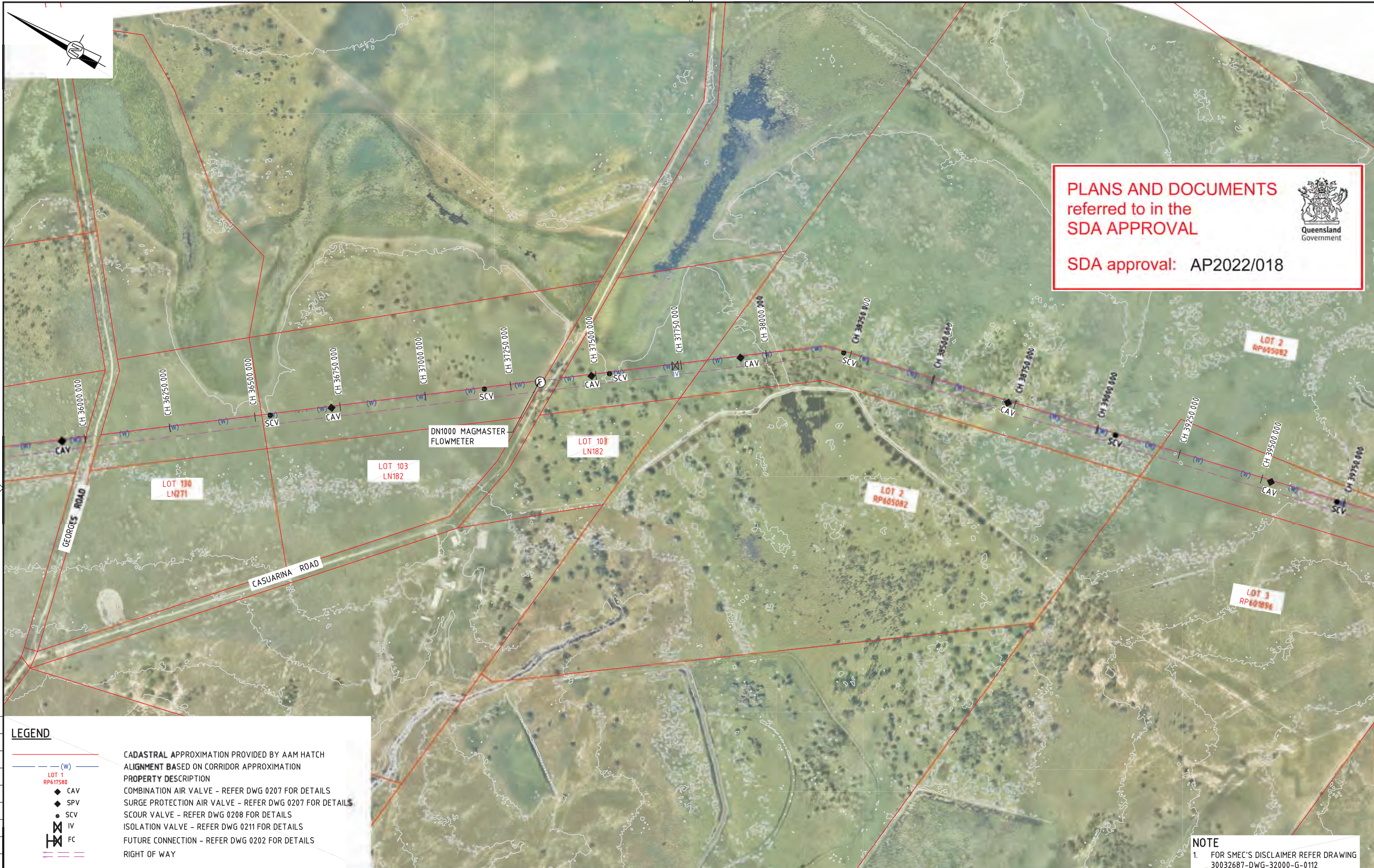
Members of the Suez Canal Authority Group  
© ABN 47 065 475 149  
LEVEL 6, 480 ST PAULS TERRACE  
FORTITUDE VALLEY QLD 4006  
SMEC PROJECT No 30032687

**CLIENT**




PROJECT TITLE FITZROY TO GLADSTONE PIPELINE PROJECT 30GLA - ALTON DOWNS TO RAGLAN PIPELINE LAYOUT PLAN CH32500 TO CH36500 SHEET 10			
SCALE 1:5000	PHASE CONCEPT DESIGN	PROJECT / DRAWING No. 30032687-DWG-34100-C-4027	REVISION D

150 mm ON ORIGINAL  
A1



**PLANS AND DOCUMENTS**  
referred to in the  
**SDA APPROVAL**

SDA approval: AP2022/018



LEGEND	
	CADASTRAL APPROXIMATION PROVIDED BY AAM HATCH
	ALIGNMENT BASED ON CORRIDOR APPROXIMATION
	PROPERTY DESCRIPTION
	COMBINATION AIR VALVE - REFER DWG 0207 FOR DETAILS
	SURGE PROTECTION AIR VALVE - REFER DWG 0207 FOR DETAILS
	SCOUR VALVE - REFER DWG 0208 FOR DETAILS
	ISOLATION VALVE - REFER DWG 0211 FOR DETAILS
	FUTURE CONNECTION - REFER DWG 0202 FOR DETAILS
	RIGHT OF WAY

**NOTE**  
1. FOR SMEC'S DISCLAIMER REFER DRAWING 30032687-DWG-32000-G-0112

**NOT FOR CONSTRUCTION**

150 mm ON ORIGINAL  
A1

DRAWING FILE LOCATION / NAME		PLOT DATE		TIME	
V:\_Vault\Projects\3003\30032687\GFP--OE Project\110_CADD\CAD\DWG\01 30 GL\34100 ALTON DOWNS TO RAGLAN PIPELINE\30032687-DWG-34100-C-4028.dwg		22 Nov 2022		10:20:07	
EXTERNAL REFERENCE FILES	REV	DATE	AMENDMENT / REVISION DESCRIPTION	MWR No.	APPROVAL
X_5000_DWG_LEGEND	A	20.08.21	30% CONCEPT DESIGN	006	MSL
X_30032687_SHEC_A1	B	14.01.22	CONCEPT DESIGN-ECI PHASE	006	MSL
X_VALVES	C	30.06.22	OPTIMISED CONCEPT DESIGN	006	MSL
X_CONTOUR 1m INTERVAL	D	18.11.22	UPDATED RIGHT OF WAY	037	MSL
X_DWG					
SS_30032687_GFP_Aerial Image					
X_30032687_GFP_Aerial Image_2					
X_30032687_GFP_ROW					
X_30032687_GFP_Alignment_2022					

DESIGNER	NAME
DRAFTER	SUCHITH.R
DRAFTING CHECK	C.BOU
DESIGNER	J.WAGENAAR
DESIGN CHECK	M.SERRANO LOPEZ
PROJECT MANAGER	M.SERRANO LOPEZ
PROJECT DIRECTOR	D.TAYLOR

SCALES AT A1 SIZE DRAWING
SCALE X
0 100 200 250m
1 : 10000 (A3) 1 : 5000 (A1)

**DESIGNER**

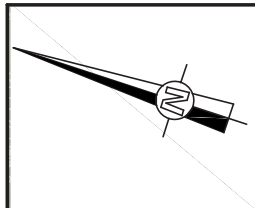


Members of the Saurburt Jurong Group  
© ABN 47 065 475 149  
LEVEL 6, 480 ST PAULS TERRACE  
FORTITUDE VALLEY QLD 4006  
SMEC PROJECT No 30032687


**CLIENT**



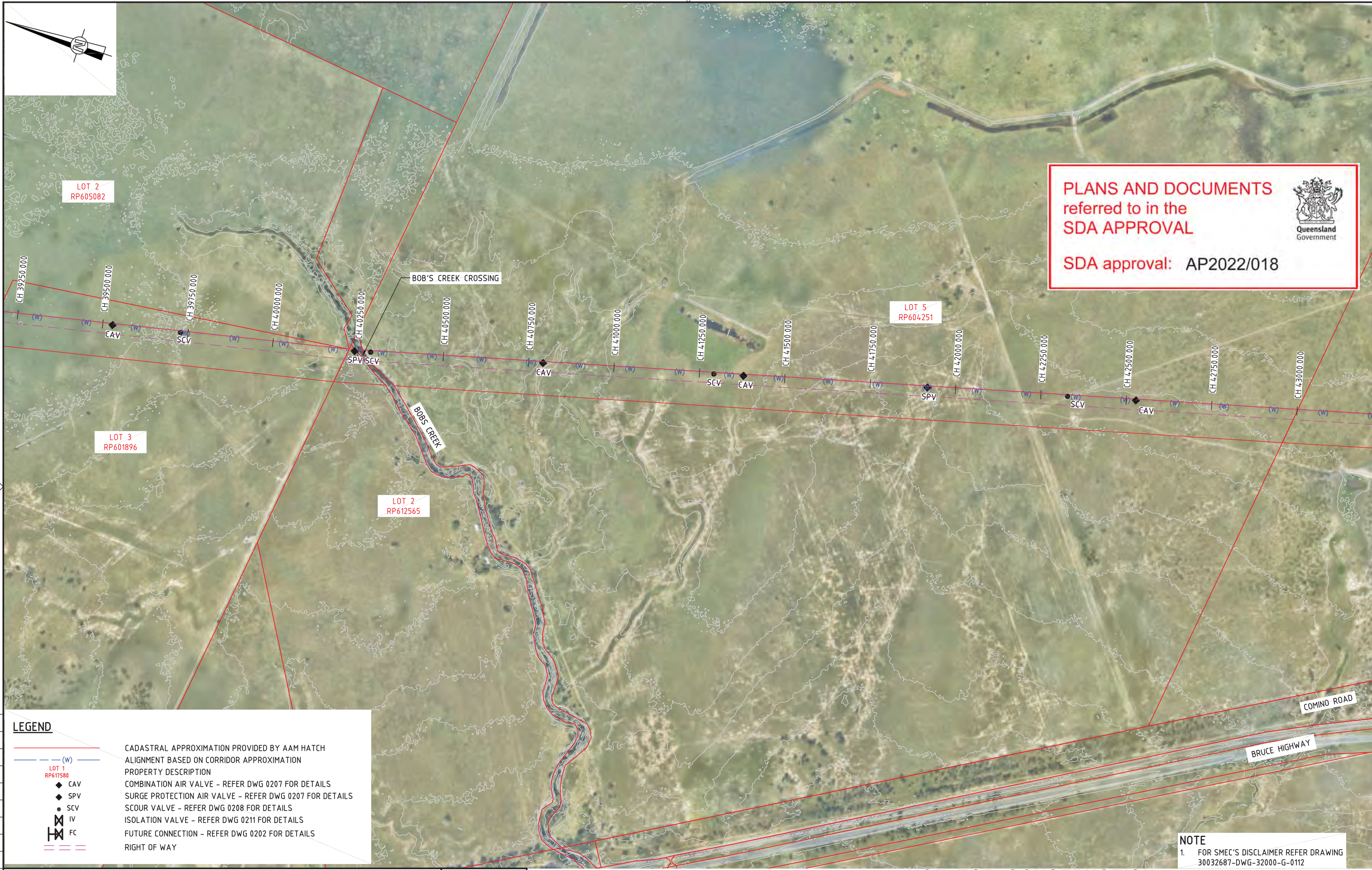
PROJECT TITLE			
FITZROY TO GLADSTONE PIPELINE PROJECT 30GLA - ALTON DOWNS TO RAGLAN PIPELINE LAYOUT PLAN CH36500 TO CH40000 SHEET 11			
SCALE	PHASE	PROJECT / DRAWING No.	REVISION
1:5000	CONCEPT DESIGN	30032687-DWG-34100-C-4028	D



**PLANS AND DOCUMENTS**  
referred to in the  
**SDA APPROVAL**



**SDA approval: AP2022/018**



**LEGEND**

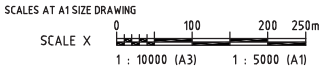
- CADASTRAL APPROXIMATION PROVIDED BY AAM HATCH
- ALIGNMENT BASED ON CORRIDOR APPROXIMATION
- PROPERTY DESCRIPTION
- CAV COMBINATION AIR VALVE - REFER DWG 0207 FOR DETAILS
- SPV SURGE PROTECTION AIR VALVE - REFER DWG 0207 FOR DETAILS
- SCV SCOUR VALVE - REFER DWG 0208 FOR DETAILS
- IV ISOLATION VALVE - REFER DWG 0211 FOR DETAILS
- FC FUTURE CONNECTION - REFER DWG 0202 FOR DETAILS
- RIGHT OF WAY

**NOTE**  
1. FOR SMEC'S DISCLAIMER REFER DRAWING 30032687-DWG-32000-G-0112

**NOT FOR CONSTRUCTION**

DRAWING FILE LOCATION / NAME		PLOT DATE		TIME	
V:\_Vault\Projects\3003\30032687\GFP-DE Project\110_CADD\CAD\DWG\01 30 GL\34100 ALTON DOWNS TO RAGLAN PIPELINE\30032687-DWG-34100-C-4029.dwg		22 Nov 2022		11:27:57	
REV	DATE	AMENDMENT / REVISION DESCRIPTION	MWR No.	APPROVAL	TITLE
A	20.08.21	30% CONCEPT DESIGN	006	MSL	DRAFTER <i>SUCHITH.R</i>
B	14.01.22	CONCEPT DESIGN-ECI PHASE	006	MSL	DRAFTING CHECK <i>C.BOU</i>
C	30.06.22	OPTIMISED CONCEPT DESIGN	006	MSL	DESIGNER <i>J.WAGENAAR</i>
D	18.11.22	UPDATED RIGHT OF WAY	037	MSL	DESIGN CHECK <i>M.SERRANO LOPEZ</i>
					PROJECT MANAGER <i>M.SERRANO LOPEZ</i>
					PROJECT DIRECTOR <i>D.TAYLOR</i>

EXTERNAL REFERENCE FILES  
 X\_5000\_DWG\_LEGEND  
 X\_30032687\_SHEC\_A1  
 X\_VALVES  
 X\_CONTOUR 1m INTERVAL  
 X\_DWG  
 SS\_30032687\_GFP\_Aerial Image  
 X\_30032687\_GFP\_Alignment\_2022  
 X\_30032687\_GFP\_Aerial Image\_2  
 X\_30032687\_GFP\_ROW



DESIGNER



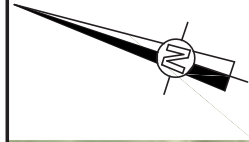
Member of the Saurburt Group  
 ABN 47 065 475 149  
 LEVEL 6, 480 ST PAULS TERRACE  
 FORTITUDE VALLEY QLD 4006  
 SMEC PROJECT No 30032687

CLIENT




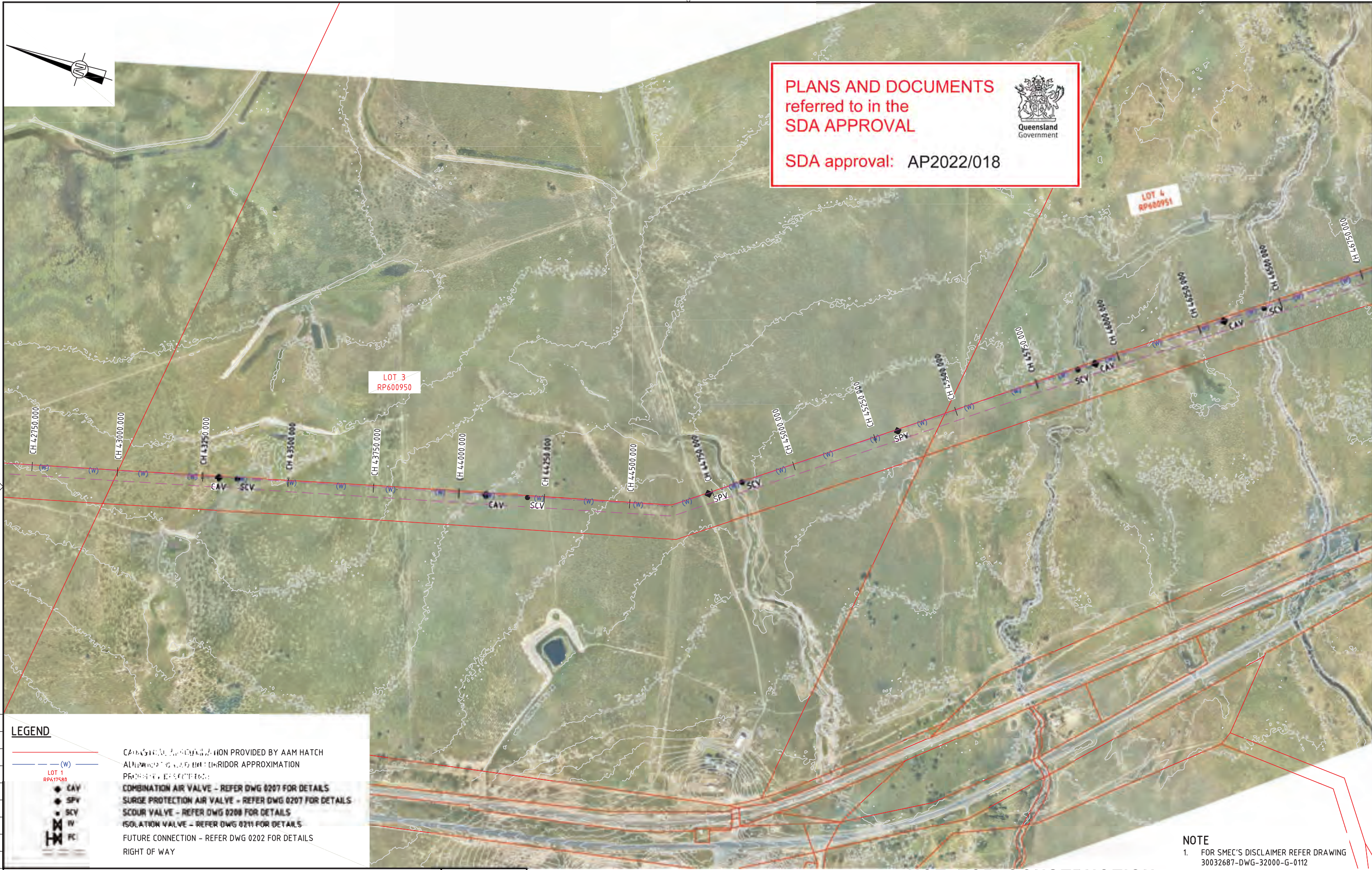
PROJECT TITLE FITZROY TO GLADSTONE PIPELINE PROJECT 30GLA - ALTON DOWNS TO RAGLAN PIPELINE			
LAYOUT PLAN CH40000 TO CH43500 SHEET 12			
SCALE 1:5000	PHASE CONCEPT DESIGN	PROJECT / DRAWING No. 30032687-DWG-34100-C-4029	REVISION D

150 mm ON ORIGINAL  
A1



**PLANS AND DOCUMENTS**  
referred to in the  
**SDA APPROVAL**

SDA approval: AP2022/018

**LEGEND**

--- (W) --- COMBINATION AIR VALVE - REFER DWG 0207 FOR DETAILS  
 --- (W) --- SURGE PROTECTION AIR VALVE - REFER DWG 0207 FOR DETAILS  
 --- (W) --- SCOUR VALVE - REFER DWG 0208 FOR DETAILS  
 --- (W) --- ISOLATION VALVE - REFER DWG 0211 FOR DETAILS  
 --- (W) --- FUTURE CONNECTION - REFER DWG 0202 FOR DETAILS  
 --- (W) --- RIGHT OF WAY

LOT 1  
RP617580

● CAV  
● SPV  
● SCV  
● IV  
● FC

**NOTE**  
1. FOR SMEC'S DISCLAIMER REFER DRAWING 30032687-DWG-32000-G-0112

**NOT FOR CONSTRUCTION**

DRAWING FILE LOCATION / NAME V:\_Vault\Projects\3003\30032687\GFP-DE Project\110_CADD\CAD\DWG\01 30 GL\34100 ALTON DOWNS TO RAGLAN PIPELINE\30032687-DWG-34100-C-4030.dwg		PLOT DATE 22 Nov 2022		TIME 11:36:53	
EXTERNAL REFERENCE FILES	REV	DATE	AMENDMENT / REVISION DESCRIPTION	MVR No.	APPROVAL
X_5000_DWG_LEGEND X_30032687_SHEC_A1 X_VALVES X_CONTOUR 1m INTERVAL X_DWG SS_30032687_GFP_Aerial Image X_30032687_GFP_Aerial Image 2 X_30032687_GFP_Alignment_2522 X_30032687_GFP_ROW	A	20.08.21	30% CONCEPT DESIGN	006	MSL
	B	14.01.22	CONCEPT DESIGN-ECI PHASE	006	MSL
	C	30.06.22	OPTIMISED CONCEPT DESIGN	006	MSL
	D	18.11.22	UPDATED RIGHT OF WAY	037	MSL
					TITLE
					NAME
					DESIGNER
					DESIGN CHECK
					PROJECT MANAGER
					PROJECT DIRECTOR
					SCALES AT A1 SIZE DRAWING
					SCALE X
					1 : 10000 (A3) 1 : 5000 (A1)
					DESIGNER
					CLIENT
					PROJECT TITLE
					SCALE
					PHASE
					PROJECT / DRAWING No.
					REVISION



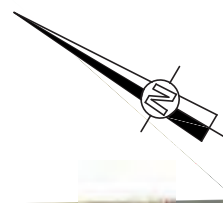
MEMBERS OF THE SOUTHERN CROSS GROUP  
© ABN 47 065 475 149  
LEVEL 6, 480 ST PAULS TERRACE  
FORTITUDE VALLEY QLD 4006  
SMEC PROJECT No 30032687



FITZROY TO GLADSTONE PIPELINE PROJECT  
30GLA - ALTON DOWNS TO RAGLAN PIPELINE  
LAYOUT PLAN  
CH43500 TO CH47000  
SHEET 13


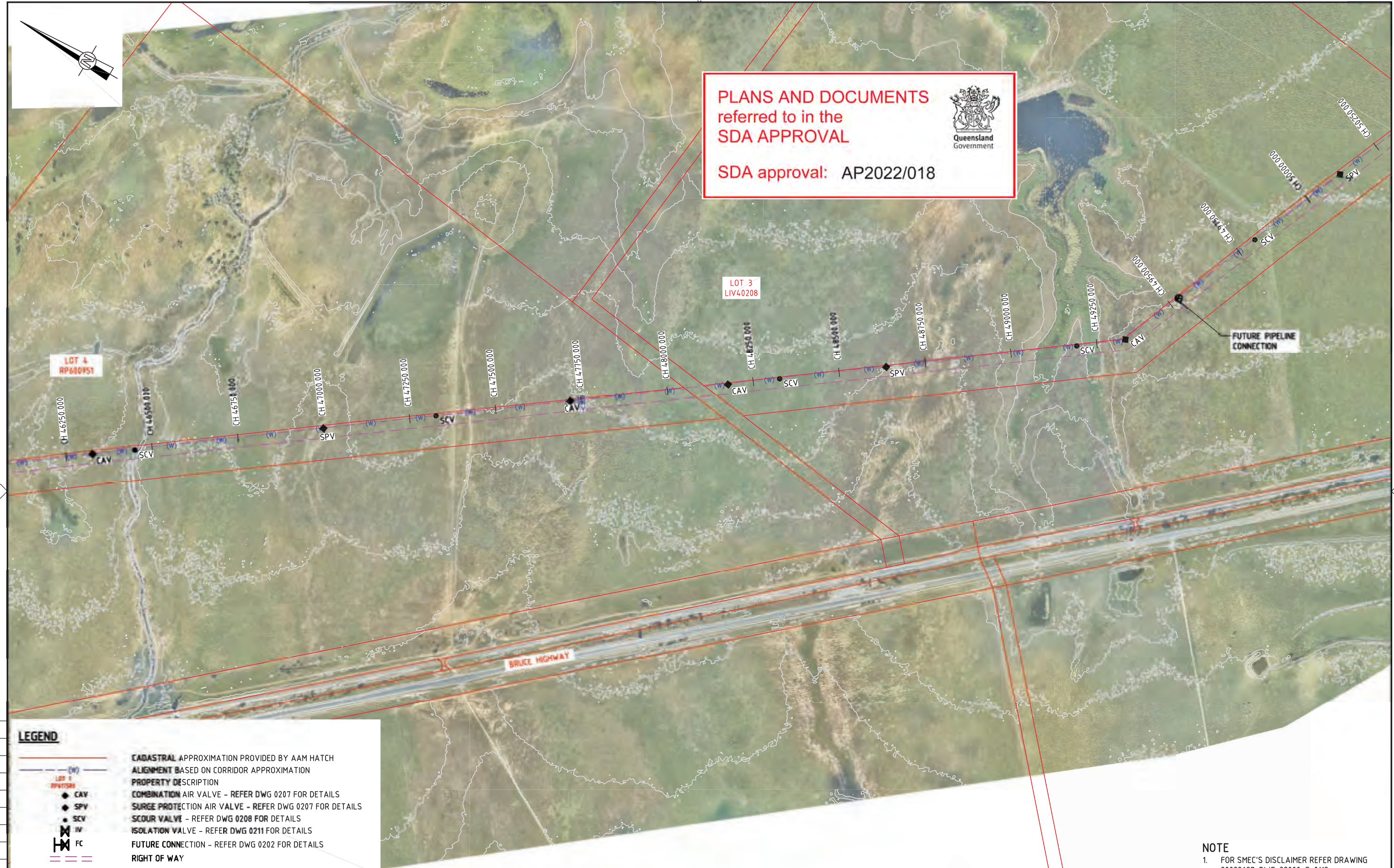
SCALE: 1:5000  
PHASE: CONCEPT DESIGN  
PROJECT / DRAWING No.: 30032687-DWG-34100-C-4030  
REVISION: D

150 mm ON ORIGINAL  
A1



**PLANS AND DOCUMENTS**  
referred to in the  
**SDA APPROVAL**

**SDA approval: AP2022/018**

150 mm ON ORIGINAL  
A1

**LEGEND**

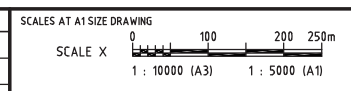
- CADASTRAL APPROXIMATION PROVIDED BY AAM HATCH
- ALIGNMENT BASED ON CORRIDOR APPROXIMATION
- PROPERTY DESCRIPTION
- CAV COMBINATION AIR VALVE - REFER DWG 0207 FOR DETAILS
- SPV SURGE PROTECTION AIR VALVE - REFER DWG 0207 FOR DETAILS
- SCV SCOUR VALVE - REFER DWG 0208 FOR DETAILS
- IV ISOLATION VALVE - REFER DWG 0211 FOR DETAILS
- FC FUTURE CONNECTION - REFER DWG 0202 FOR DETAILS
- RIGHT OF WAY

**NOTE**  
1. FOR SMEC'S DISCLAIMER REFER DRAWING 30032687-DWG-32000-G-0112

**NOT FOR CONSTRUCTION**

DRAWING FILE LOCATION / NAME V:\_Vault\Projects\3003\30032687\GFP-0E Project\110_CADD\CAD\DWG\01 30 GL\34100 ALTON DOWNS TO RAGLAN PIPELINE\30032687-DWG-34100-C-4031.dwg		PLOT DATE 22 Nov 2022		TIME 11:45:46	
EXTERNAL REFERENCE FILES	REV	DATE	AMENDMENT / REVISION DESCRIPTION	MWR No.	APPROVAL
X_5000_DWG_LEGEND	A	20.08.21	30% CONCEPT DESIGN	006	MSL
X_30032656_SHEC_A1	B	14.01.22	CONCEPT DESIGN-ECI PHASE	006	MSL
X_VALVES	C	30.06.22	OPTIMISED CONCEPT DESIGN	006	MSL
X_CONTOUR 1m INTERVAL	D	18.11.22	UPDATED RIGHT OF WAY	037	MSL
X_04208					
SS_30032687_GFP_Aerial Image					
X_30032687_GFP_Aerial Image_2					
X_30032687_GFP_Aerial Image_3					
X_30032687_GFP_ROW					
X_30032687_GFP_Alignment_2022					

DESIGNER	SUCHITH.R
DRAFTING CHECK	C.BOU
DESIGNER	J.WAGENAAR
DESIGN CHECK	M.SERRANO LOPEZ
PROJECT MANAGER	M.SERRANO LOPEZ
PROJECT DIRECTOR	D.TAYLOR



**DESIGNER**



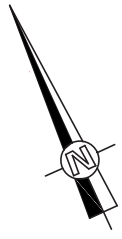
Members of the Suez Canal Authority Group  
© ABN 47 065 475 149  
LEVEL 6, 480 ST PAULS TERRACE  
FORTITUDE VALLEY QLD 4006  
SMEC PROJECT No 30032687

**CLIENT**



Gladstone Area Water Board

PROJECT TITLE FITZROY TO GLADSTONE PIPELINE PROJECT 30GLA - ALTON DOWNS TO RAGLAN PIPELINE LAYOUT PLAN CH47000 TO CH50500 SHEET 14			
SCALE 1:5000	PHASE CONCEPT DESIGN	PROJECT / DRAWING No. 30032687-DWG-34100-C-4031	REVISION D



**PLANS AND DOCUMENTS**  
referred to in the  
**SDA APPROVAL**



SDA approval: AP2022/018

LOT 3  
LIV40208

LOT 4  
LIV40208

LOT 3  
RP603158

LOT 1  
RP60270

LOT 76  
LIV40208

SIX MILE CREEK

**LEGEND**

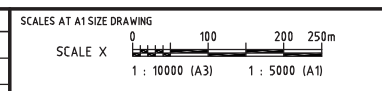
- CADASTRAL APPROXIMATION PROVIDED BY AAM HATCH
- ALIGNMENT BASED ON CORRIDOR APPROXIMATION
- PROPERTY DESCRIPTION
- CAV COMBINATION AIR VALVE - REFER DWG 0207 FOR DETAILS
- SPV SURGE PROTECTION AIR VALVE - REFER DWG 0207 FOR DETAILS
- SCV SCOUR VALVE - REFER DWG 0208 FOR DETAILS
- IV ISOLATION VALVE - REFER DWG 0211 FOR DETAILS
- FC FUTURE CONNECTION - REFER DWG 0202 FOR DETAILS
- RIGHT OF WAY

**NOTE**  
1. FOR SMEC'S DISCLAIMER REFER DRAWING  
30032687-DWG-32000-G-0112

**NOT FOR CONSTRUCTION**

DRAWING FILE LOCATION / NAME		PLOT DATE		TIME	
V:\_Vault\Projects\3003\30032687\GFP-DE Project\110_CADD\CAD\DWG\01 30 GL\34100 ALTON DOWNS TO RAGLAN PIPELINE\30032687-DWG-34100-C-4032.dwg		22 Nov 2022		12:10:36	
EXTERNAL REFERENCE FILES	REV	DATE	AMENDMENT / REVISION DESCRIPTION	MWR No.	APPROVAL
X_5000_DWG_LEGEND	A	20.08.21	30% CONCEPT DESIGN	006	MSL
X_30032687_SHEC_A1	B	14.01.22	CONCEPT DESIGN-ECI PHASE	006	MSL
X_VALVES	C	30.06.22	OPTIMISED CONCEPT DESIGN	006	MSL
X_CONTOUR 1m INTERVAL	D	18.11.22	UPDATED RIGHT OF WAY	037	MSL
X_IV					
X_FC					
X_30032687_GFP_Aerial Image					
X_30032687_GFP_Aerial Image_3					
X_30032687_GFP_Aerial Image_2					
X_30032687_GFP_ROW					
X_30032687_GFP_Alignment_2022					

NAME	TITLE
SUCHITH.R	DRAFTER
C.BOU	DRAFTING CHECK
J.WAGENAAR	DESIGNER
M.SERRANO LOPEZ	DESIGN CHECK
M.SERRANO LOPEZ	PROJECT MANAGER
D.TAYLOR	PROJECT DIRECTOR



**DESIGNER**

Members of the Suez Canal Authority Group  
© ABN 47 065 475 149  
LEVEL 6, 480 ST PAULS TERRACE  
FORTITUDE VALLEY QLD 4006  
SMEC PROJECT No 30032687

**CLIENT**

PROJECT TITLE			
FITZROY TO GLADSTONE PIPELINE PROJECT 30GLA - ALTON DOWNS TO RAGLAN PIPELINE LAYOUT PLAN CH50500 TO CH54000 SHEET 15			
SCALE	PHASE	PROJECT / DRAWING No.	REVISION
1:5000	CONCEPT DESIGN	30032687-DWG-34100-C-4032	D

150 mm ON ORIGINAL  
A1