
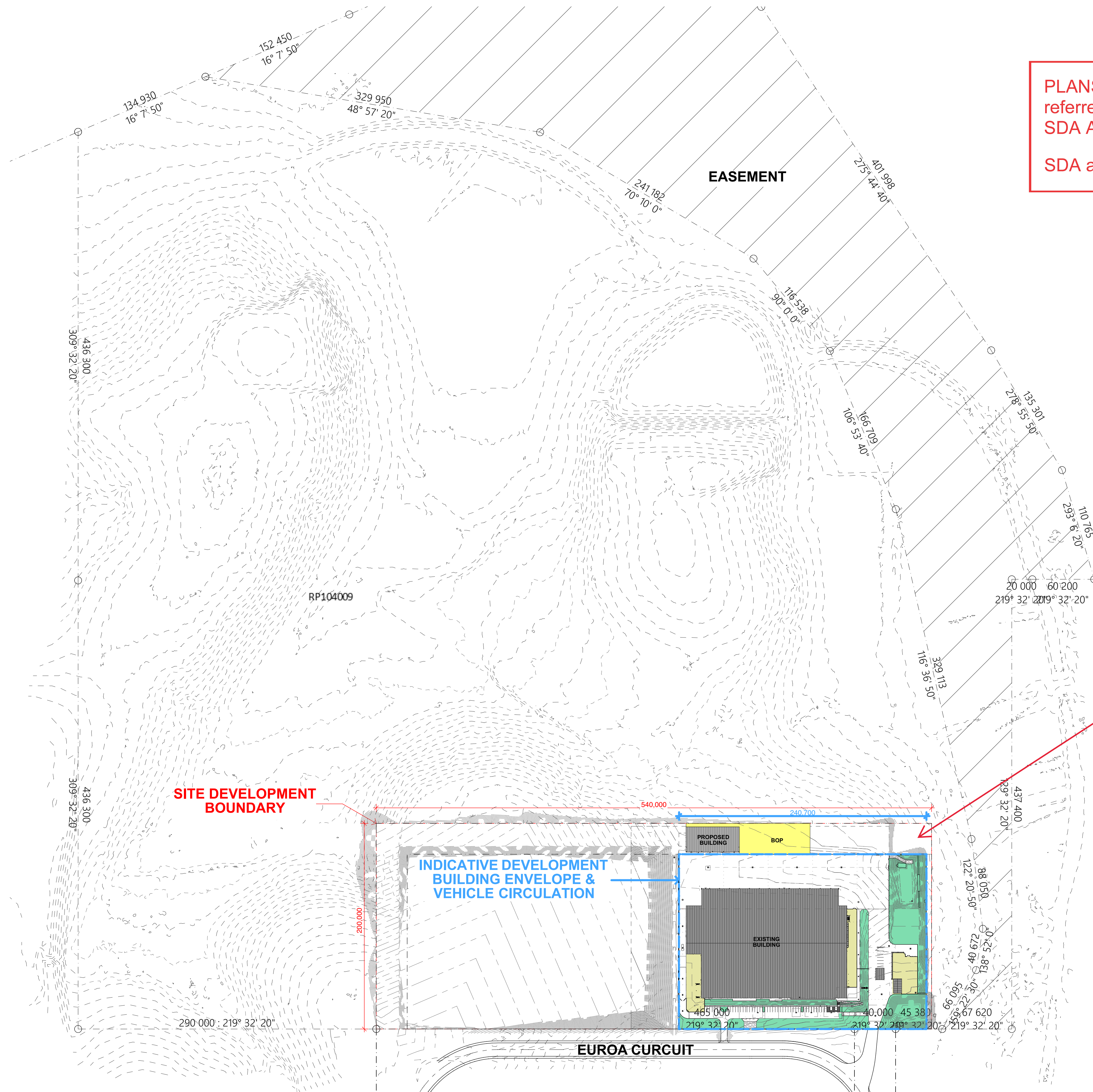


PLANS AND DOCUMENTS
referred to in the
SDA APPROVAL


Queensland
Government

SDA approval: APC2023/007



The 'Indicative Development Building Envelope and Vehicle Circulation' must be within the 'Site Development Boundary' as per condition 2

Revision

09	Preliminary DA Set - Testing Facility
10	Preliminary DA Set - Testing Facility
11	Preliminary DA Set - Testing Facility
12	Amended DA Set
13	Amended DA Set

11/04/2022
19/04/2022
5/02/2024
5/06/2024
11/06/2024

Project

FFI GEM Centre - Electrolyser Facility, Phase 1
Euroa Circuit, Aldoga Gladstone QLD 4694 Australia

Client

Hutchinson Builders

Architect

Greg Adsett, Dalbert Ton

Drawn

DT, PH, KF

Stage

Design Development

Status

Preliminary (NOT FOR CONSTRUCTION)

Project No.

1295-01

Scale

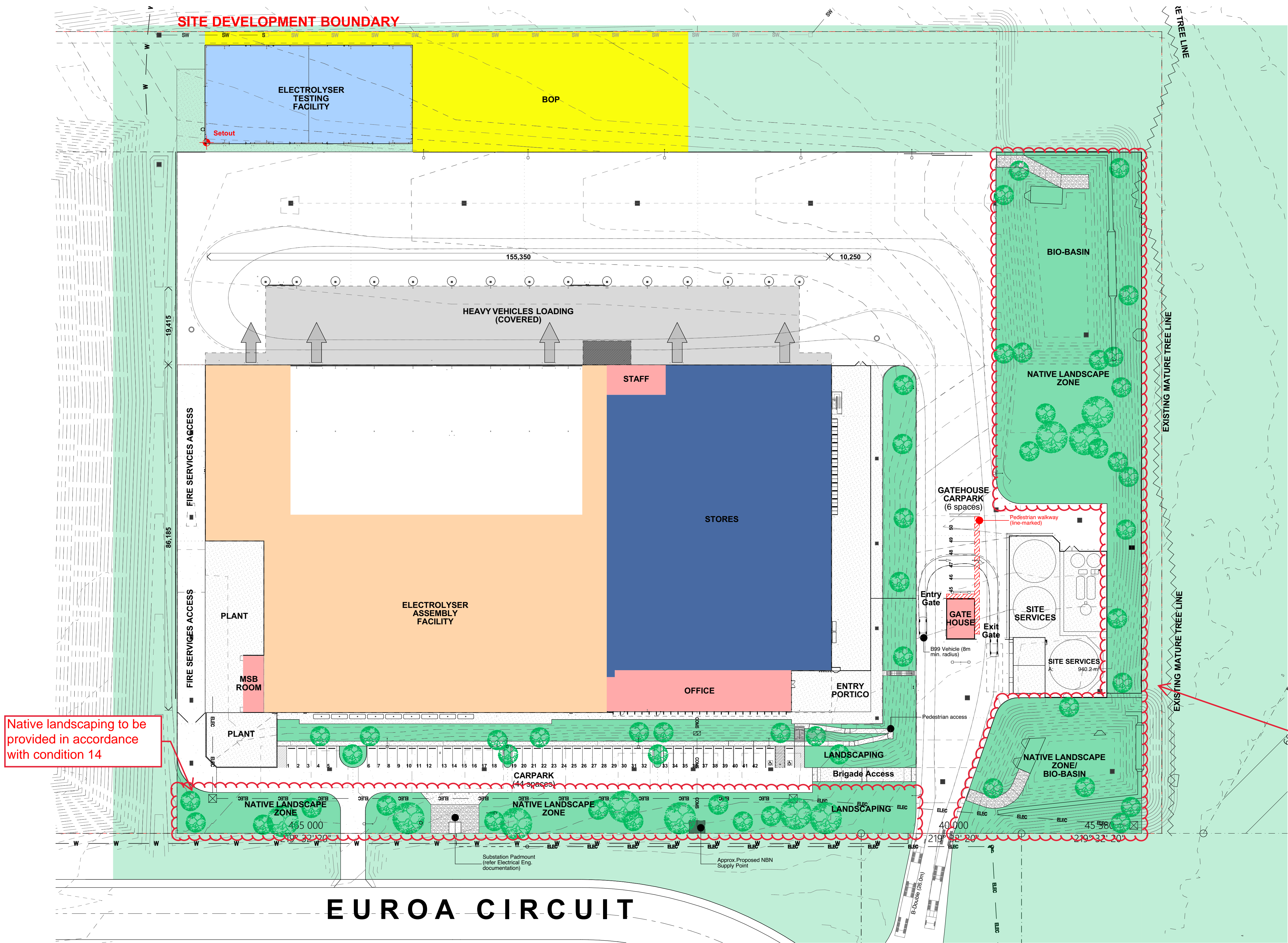
1:2000 at A1

Site Plan

A-DA-01.01

13

Revision



Revision

13	Preliminary DA Set - Testing Facility
14	Preliminary DA Set - Testing Facility
15	Preliminary DA Set - Testing Facility
16	Amended DA Set
17	Amended DA Set

05/05/2022
23/01/2024
5/02/2024
5/06/2024
11/06/2024

Project

FFI GEM Centre - Electrolyser Facility, Phase 1
Euroa Circuit, Aldoga Gladstone QLD 4694 Australia

Client

Hutchinson Builders

Architect

Greg Adsett, Dalbert Ton

Drawn

DT, PH, KF

Stage

Design Development

Status

Preliminary (NOT FOR CONSTRUCTION)

Project No.
1295-01

Scale
1:500 at A1

Site Works Plan

A-DA-01.02

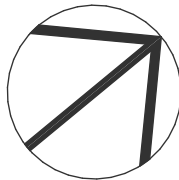
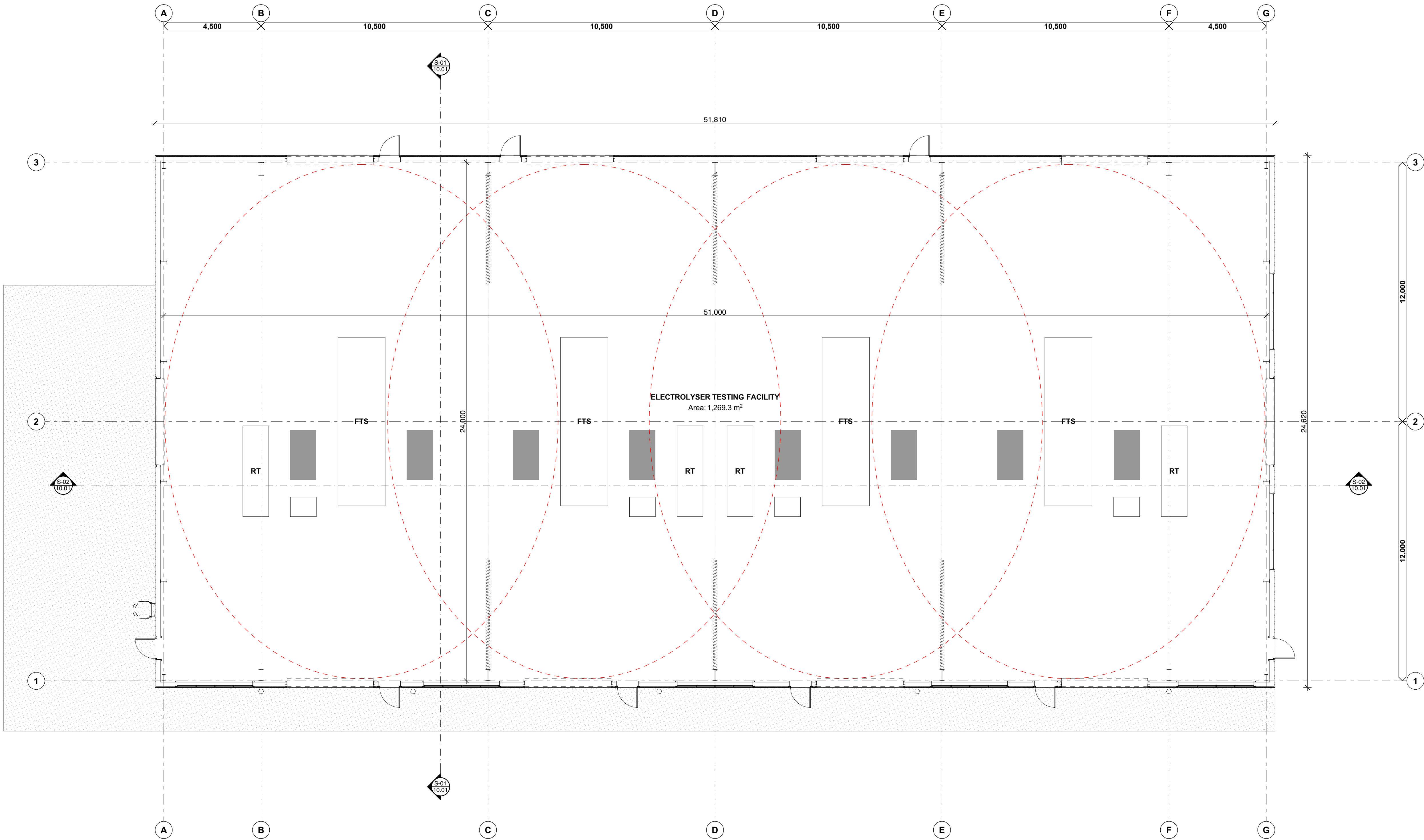
17

Revision



PLANS AND DOCUMENTS
referred to in the
SDA APPROVAL

SDA approval: APC2023/007



SITE DEVELOPMENT BOUNDARY

PLANS AND DOCUMENTS
referred to in the
SDA APPROVAL



SDA approval: APC2023/007

Access is only permitted
for emergency services

Electric entry gates are to be
provided provided in
accordance with condition 12

Access is only permitted
for emergency services

SITE AREA BREAKDOWN		
Processing plant overall GFA	14,450m ²	
Fully enclosed floor area	12,990m ²	
Electrolyser assembly (inc. circ.)	5,085m ²	
Outgoing electrolyzers	563m ²	
Stores (inc. circ.)	4,165m ²	
Office & staff areas (GF & FF)	993m ²	
External plant (Inc. MSB room)	1,597m ²	
Site services	940m ²	
Gatehouse	65m ²	
Heavy Vehicles Loading Area	8,800m ²	
Parking - 50 bays	1,560m ²	
Electrolyser testing facility	1,282m ²	

Revision

13	Preliminary DA Set - Testing Facility
14	Preliminary DA Set - Testing Facility
15	Preliminary DA Set - Testing Facility
16	Amended DA Set
17	Amended DA Set

05/05/2022
23/01/2024
5/02/2024
5/06/2024
11/06/2024

Project

FFI GEM Centre - Electrolyser Facility, Phase 1
Euroa Circuit, Aldoga Gladstone QLD 4694 Australia

Client

Hutchinson Builders

Architect

Greg Adsett, Dalbert Ton

Drawn

DT, PH, KF

Stage

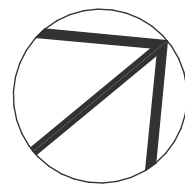
Design Development

Status

Preliminary (NOT FOR CONSTRUCTION)

Project No.
1295-01

Scale
1:500 at A1

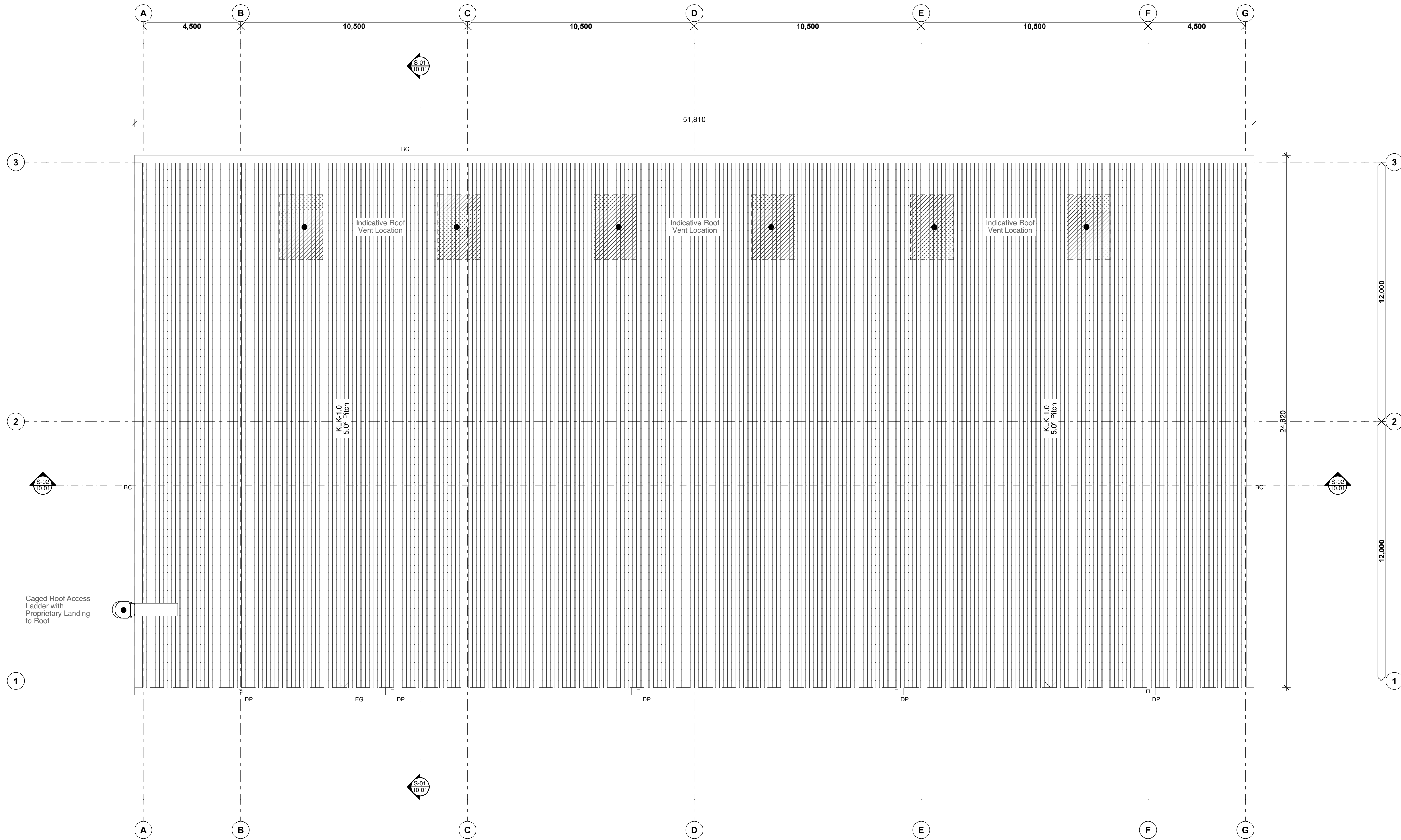


Floor Plan - Ground

A-DA-03.01

17

Revision



Revision

01	Preliminary DA Set - Testing Facility
02	Preliminary DA Set - Testing Facility
03	Preliminary DA Set - Testing Facility
04	Amended DA Set

18/01/2024
23/01/2024
5/02/2024
5/06/2024

Project

FFI GTF - Testing Facility
Euroa Circuit, Aldoga Gladstone QLD 4694 Australia

Client

Fortescue Future Industries Pty Ltd

Architect

DT

Drawn

DT, IN

Stage

Development Application

Status

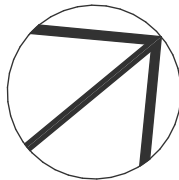
Preliminary (NOT FOR CONSTRUCTION)

Project No.

1340-02

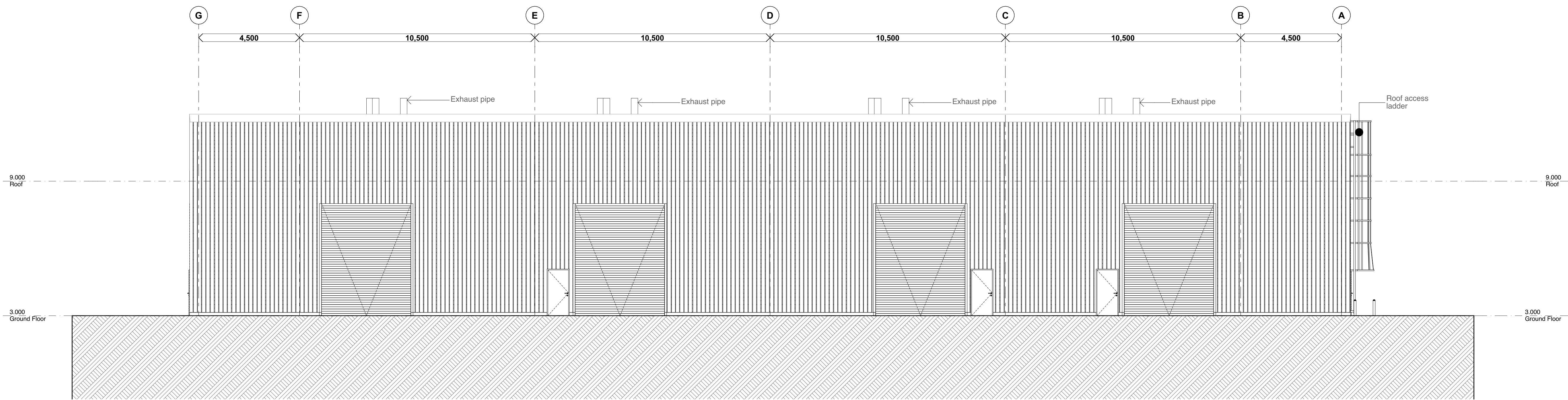
Scale

1:100 at A1

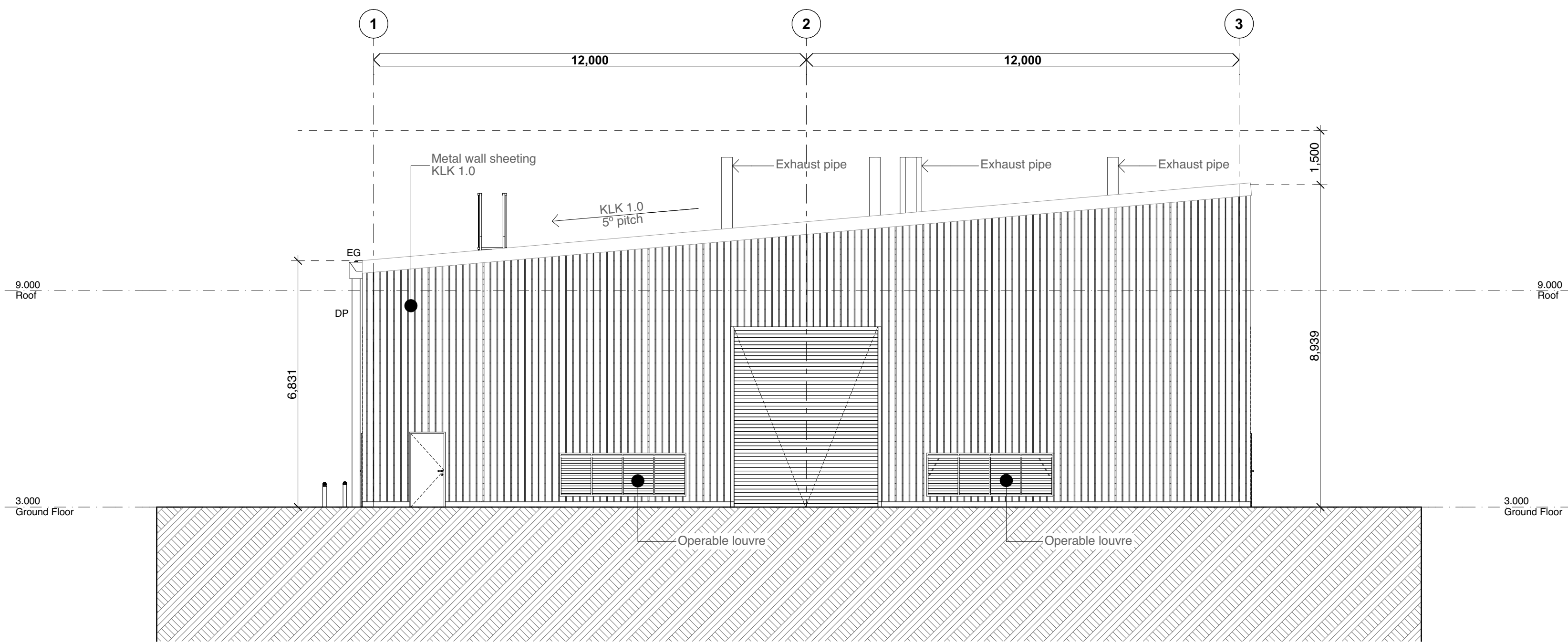


Roof Plan

A-DA-04.01



1 DA - North West Elevation
Scale 1:100



2 DA - North East Elevation
Scale 1:100



KLK 1.0 (roof)
Metal Roof Sheetting - Kliplok
Finish 'Surfmist'



KLK 1.0 (wall)
Metal Wall Cladding - Kliplok
Finish 'Shale Grey'

PLANS AND DOCUMENTS
referred to in the
SDA APPROVAL



SDA approval: APC2023/007

Revision

01	Preliminary DA Set - Testing Facility
02	Preliminary DA Set - Testing Facility
03	Preliminary DA Set - Testing Facility
04	Amended DA Set

18/01/2024
23/01/2024
5/02/2024
5/06/2024

Project

FFI GTF - Testing Facility
Euroa Circuit, Aldoga Gladstone QLD 4694 Australia

Client

Fortescue Future Industries Pty Ltd

Architect
DT

Drawn
DT, IN

Stage

Development Application

Status

Preliminary (NOT FOR CONSTRUCTION)

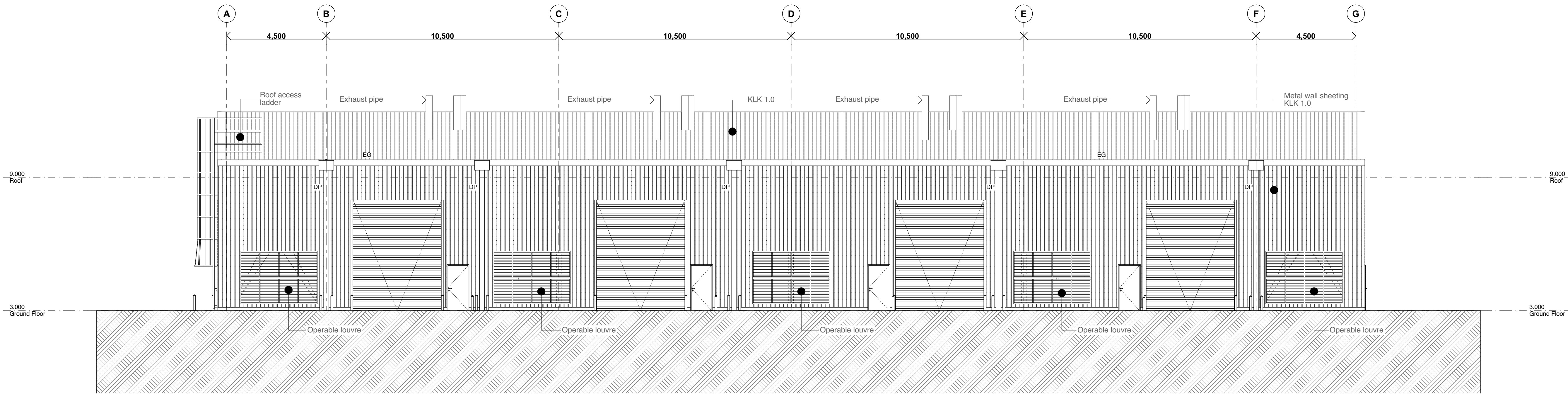
Project No.
1340-02

Scale
1:100 at A1

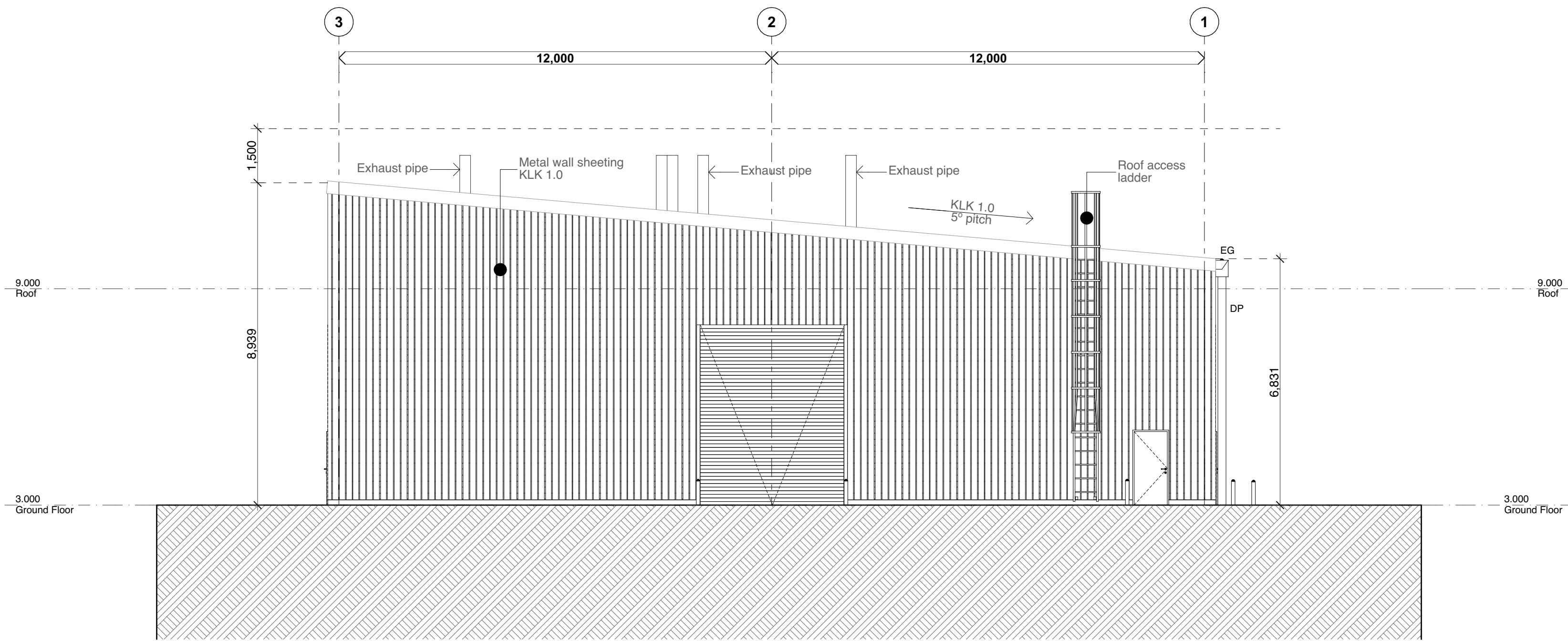
Elevations 1

A-DA-09.01

04



1 DA - South East Elevation
Scale 1:100



2 DA - South West Elevation
Scale 1:100



KLK 1.0 (roof)
Metal Roof Sheetting - Kliplok
Finish 'Surfmist'



KLK 1.0 (wall)
Metal Wall Cladding - Kliplok
Finish 'Shale Grey'

PLANS AND DOCUMENTS
referred to in the
SDA APPROVAL



SDA approval: APC2023/007

Revision

01	Preliminary DA Set - Testing Facility
02	Preliminary DA Set - Testing Facility
03	Preliminary DA Set - Testing Facility
04	Amended DA Set

18/01/2024
23/01/2024
5/02/2024
5/06/2024

Project

FFI GTF - Testing Facility
Euroa Circuit, Aldoga Gladstone QLD 4694 Australia

Client

Fortescue Future Industries Pty Ltd

Architect
DT

Drawn
DT, IN

Stage

Development Application

Status

Preliminary (NOT FOR CONSTRUCTION)

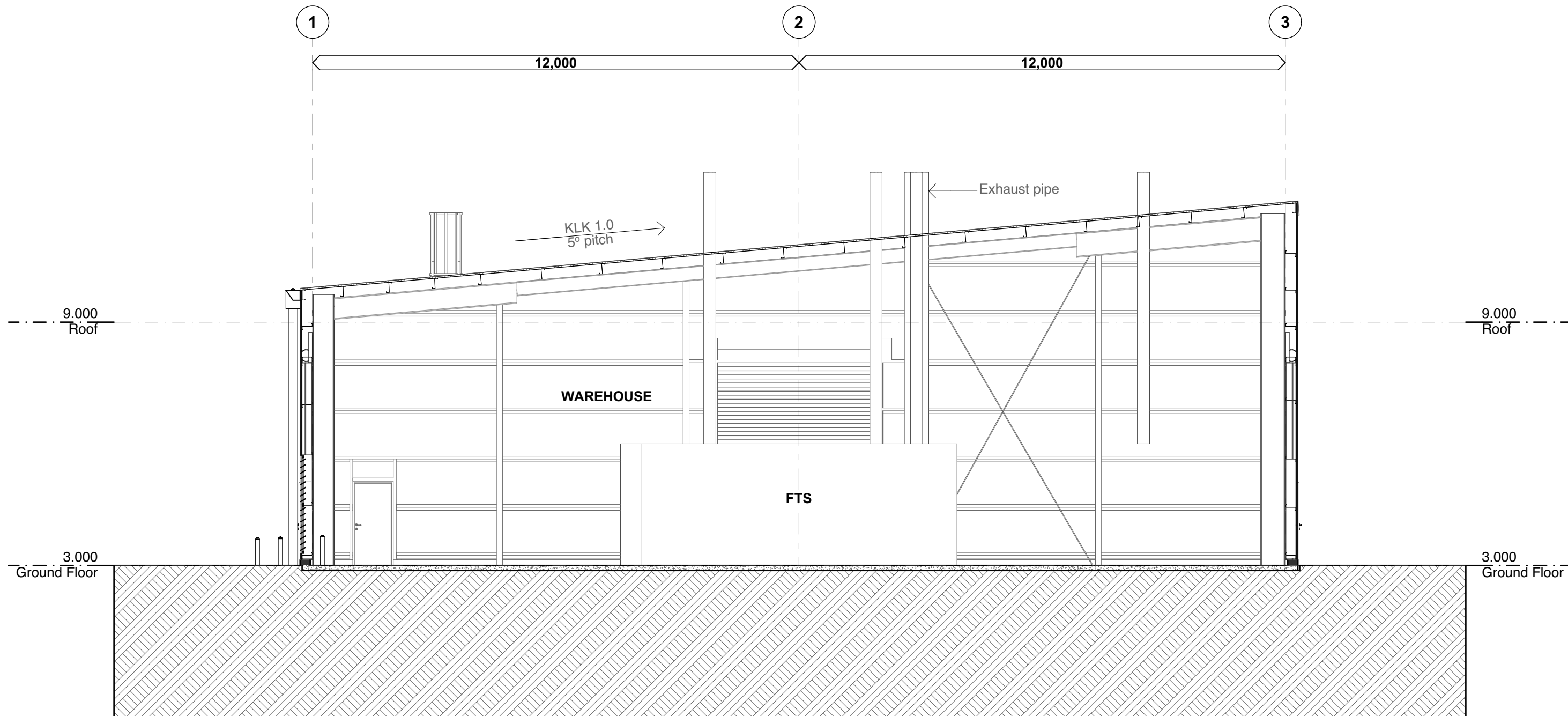
Project No.
1340-02

Scale
1:100 at A1

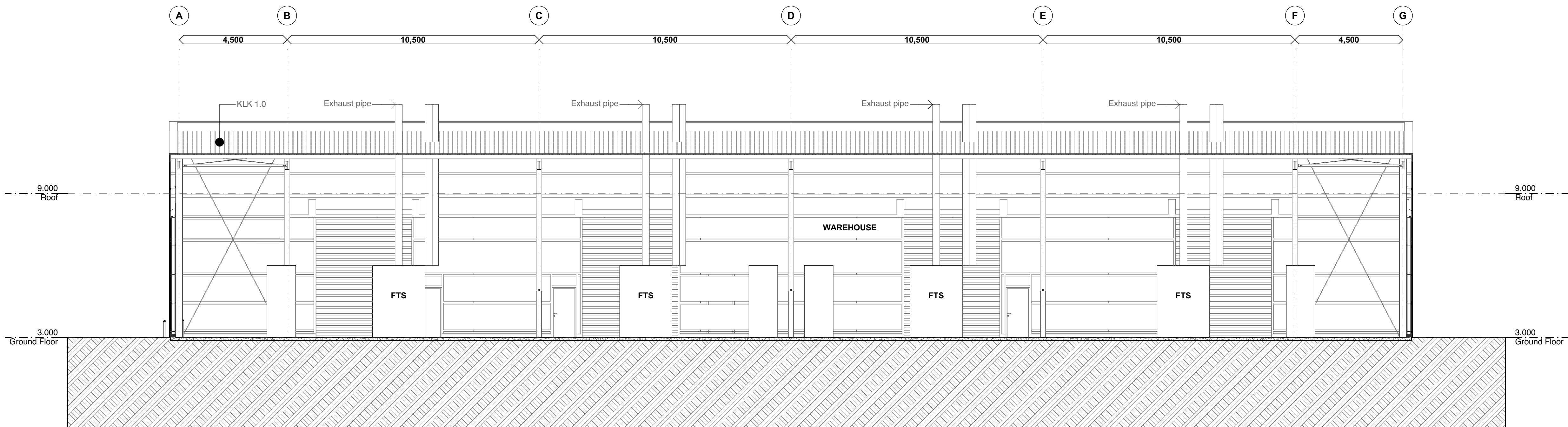
Elevations 2

A-DA-09.02

04




1 DA - Section 1
Scale 1:100



2 DA - Section A
Scale 1:100

PLANS AND DOCUMENTS
referred to in the
SDA APPROVAL


Queensland
Government

SDA approval: APC2023/007

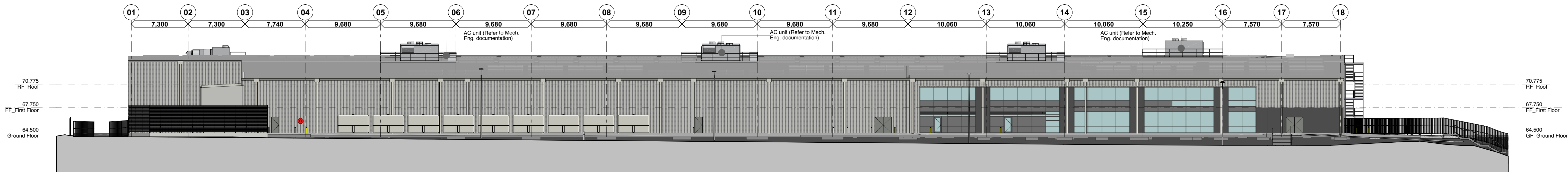
Revision		
01	Preliminary DA Set - Testing Facility	18/01/2024
02	Preliminary DA Set - Testing Facility	23/01/2024
03	Preliminary DA Set - Testing Facility	5/02/2024
04	Amended DA Set	5/06/2024

Project FFI GTF - Testing Facility Euroa Circuit, Aldoga Gladstone QLD 4694 Australia
Client Fortescue Future Industries Pty Ltd

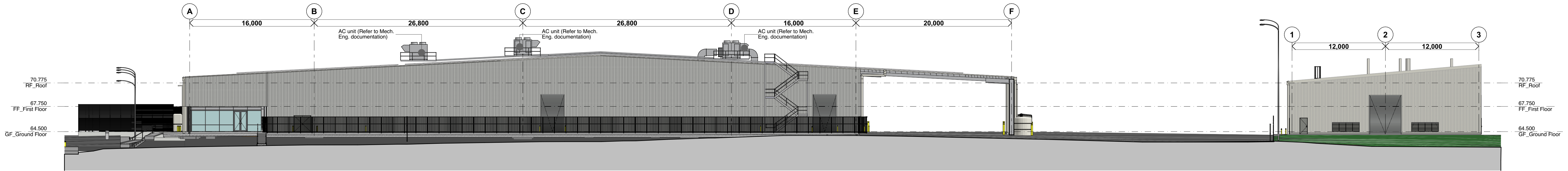
Architect DT
Drawn DT, IN

Stage Development Application
Status Preliminary (NOT FOR CONSTRUCTION)

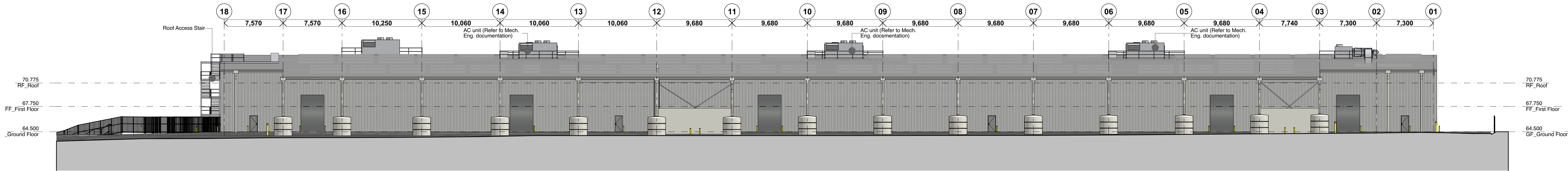
Project No. 1340-02
Scale 1:100 at A1



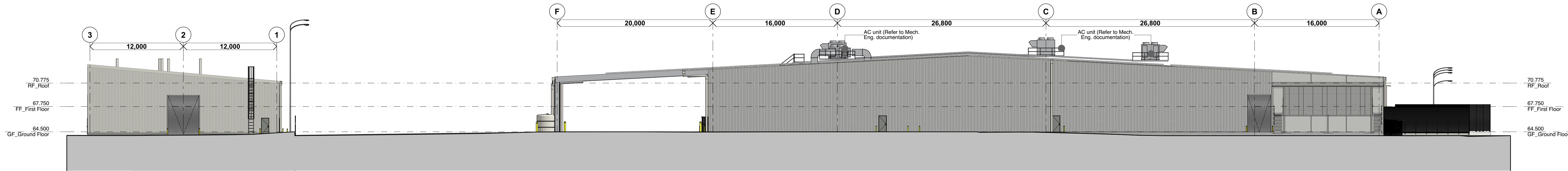
1 DA - South-East Elevation
Scale 1:250



2 DA - North-East Elevation
Scale 1:250



3 DA - North-West Elevation
Scale 1:250



4 DA - South-West Elevation
Scale 1:250

PLANS AND DOCUMENTS
referred to in the
SDA APPROVAL

SDA approval: APC2023/007



Revision

05	DA Revisions
06	DA Minor Change
07	DA Minor Change
08	DA Minor Change
09	Amended DA Set

11/04/2022	
25/10/2022	
26/10/2022	
1/12/2022	
12/06/2024	

Project

FFI GEM Centre - Electrolyser Facility, Phase 1
Euroa Circuit, Aldoga Gladstone QLD 4694 Australia

Client

Hutchinson Builders

Architect

Greg Adsett, Dalbert Ton

Drawn

DT, PH, KF

Stage

Design Development

Status

Preliminary (NOT FOR CONSTRUCTION)

Project No.
1295-01

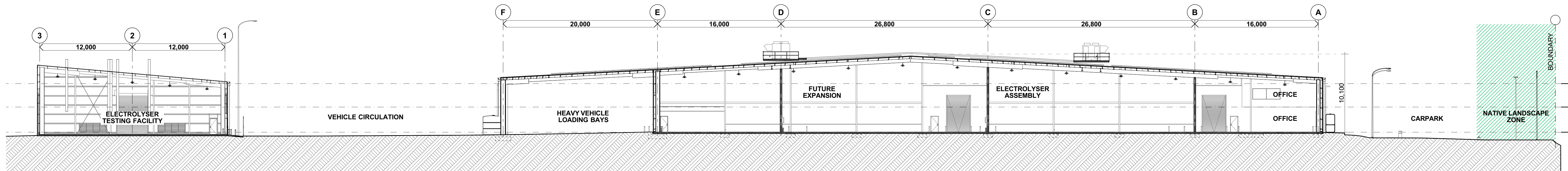
Scale
1:250 at A1

Elevations

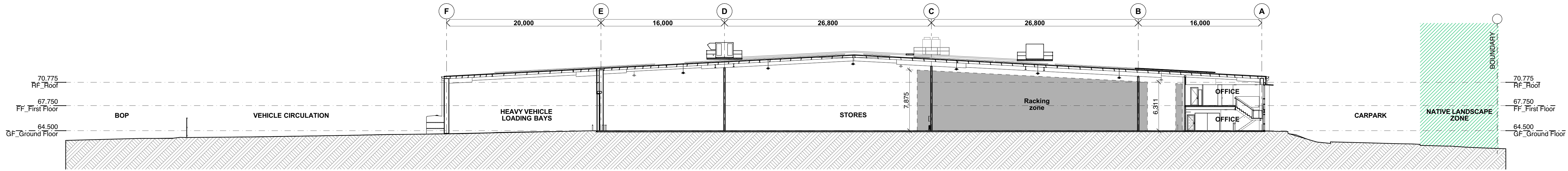
A-DA-09.01

09

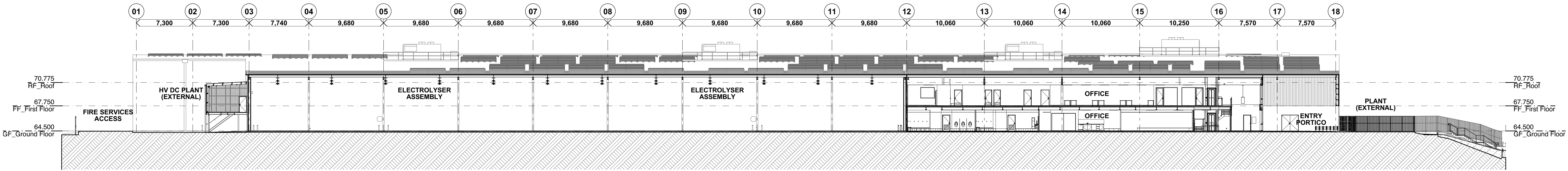
Revision



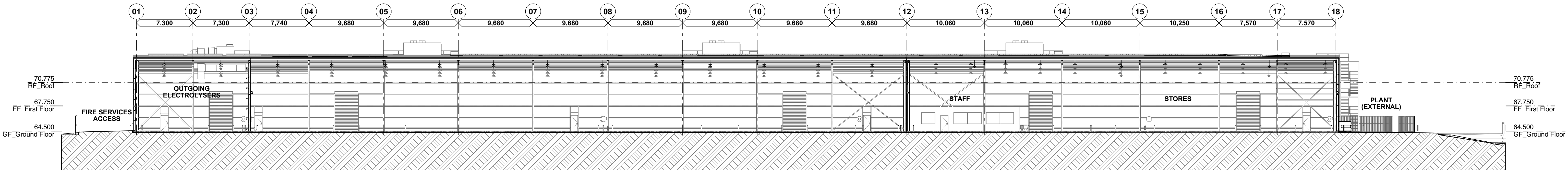
1 DA - Section 1
Scale 1:250



2 DA - Section 2
Scale 1:250



3 DA - Section A
Scale 1:250



4 DA - Section B
Scale 1:250

PLANS AND DOCUMENTS
referred to in the
SDA APPROVAL

SDA approval: APC2023/007

