

Welcome

Townsville Industry Breakfast

Wednesday 23rd November



Queensland
Government

The Department of
**State Development, Infrastructure,
Local Government and Planning**





Agrispower North Queensland Operations



**Townsville
Industry
Breakfast**

**November
2022**

Acknowledgement of Country

We acknowledge the traditional owners and custodians of the lands on which we gather today.

We pay our respects to their ancestors, as well as their elders past, present and emerging.

Image courtesy of Charters Towers Regional Council



Amorphous Silica



Amorphous Silica is extremely rich in PAS and has the highest concentrations of PAS commercially available

Plant Available Silicon (PAS) is derived from amorphous silica. There are essentially, 2 types of silicon:

- Crystalline (has structure) – beach sand
- Amorphous (no structure) – Agrisilica®

The science around PAS reveals many extraordinary agri-benefits.

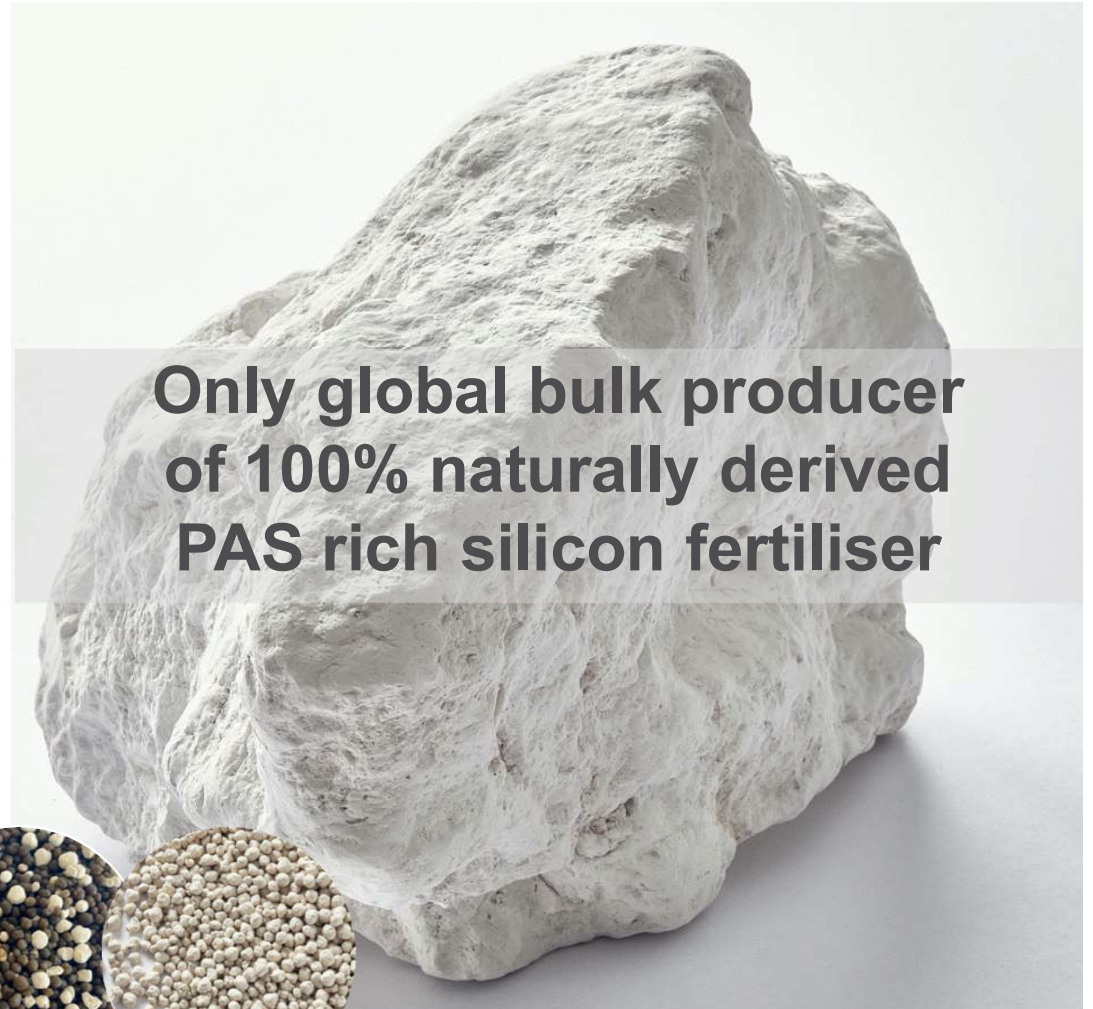
1. PAS unlocks silicon's multiple benefits to agriculture
2. PAS 100% naturally derived
3. PAS is safe for humans, animals and the environment
4. PAS is silicon in a form able to be easily absorbed by plants as a valuable nutrient

Natural mineral, certified for organic input

No heavy metals



**Only global bulk producer
of 100% naturally derived
PAS rich silicon fertiliser**





Agrisilica® Product



- Agrisilica® is 100% naturally derived and 100% climate and environmentally safe
- Agrisilica® has no GHG emissions in the field
- Product suitable for all types of agriculture and horticulture including: broadacre crops, horticulture, tree crops, hydroponics, aquaponics, commercial nurseries, permaculture, organic, biodynamic, turf production, sporting fields, parks and gardens
- Significant agronomic knowledge bank data on crop responses to Agrisilica® in different global regions (targeting issues associated with soils, seasons, pests, pathogens)
- Optional usage: stand-alone input or blended with traditional fertilisers. Blended usage delivers enhanced NPK, MAP, DAP etc.
- Product reserves, processing and export all based in Queensland, Australia



Amorphous Silica is unique



Agrisilica® Product Registrations



Agripower has undertaken comprehensive trials over 11 years in 26 countries with over 700+ trials over 46 different crops completed to date

**Agrisilica® is registered in 16 countries
With more registrations pending**



Australian Operations Investment To Date A\$250 million



Project	Group Ownership	Type
Charters Towers Manufacturing Facility	100%	Operating Plant
Conjuboy	100%	Operating Mine

Aerial shot looking West over Charters Towers ROM pad



Agripower Asset and Mine Operations



Conjuboy Mine,
Queensland
Australia

86% of the
world's known
source

Asset life of
~200 years

Agripower's
Amorphous
Silica deposit

~ 2 billion
tonnes of
Amorphous
Silica

At 10mtpa of
production



Conjuboy Mine – World's largest natural amorphous silica asset, 100% owned by Agripower

Agripower sources PAS-rich fertiliser from its Conjuboy Mine located in far north Queensland ~320km north-west of Townsville and ~300km north-west by road from Agripower's Charters Towers manufacturing facility

The world's largest natural amorphous silica asset of high grade, representing ~86% of the world's known PAS at ~2 billion tonnes with a minimum of 26% PAS

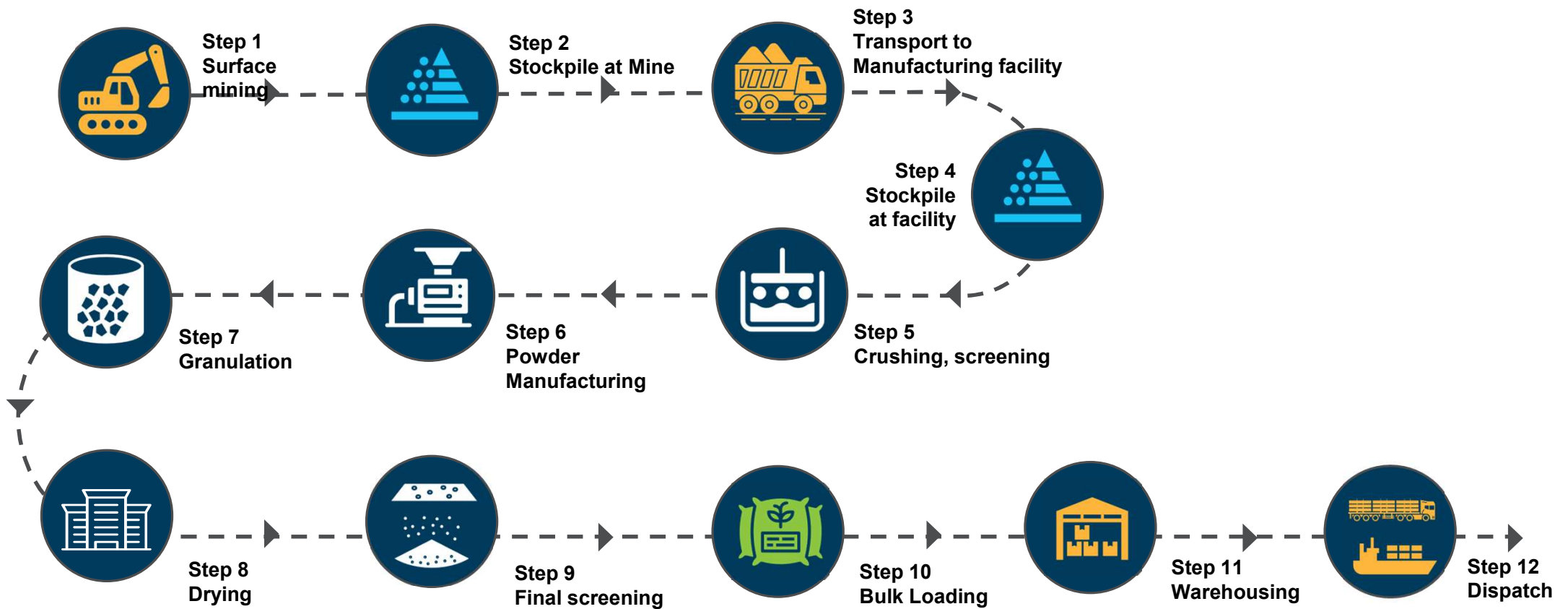
Mine life estimated to be ~200 years, assuming 10mtpa mining rate
(reserve estimate based on drilling, geological assessment, mapping and trenching)

- Simple open cut mining. No explosives.
- Low average strip ratio of 0.22:1 and high resource-to-reserve conversion at 95%
- Exhibiting a high degree of geological continuity and low variability

Vertically Integrated Product Roadmap



Highly Efficient Process to Minimise Process Waste & Maximise Product Output



Future Growth and Expansion



Modular Manufacturing plant design for stream-lined expansion to 500,000tpa

New 250,000tpa facility commissioned in 2021 at Charters Towers. Plans to expand production to 500,000tpa.

Expansion expected to support 70 full time jobs. A 50% increase on current full time job numbers.

Future improvements works expected to include a Charters Towers rail siding and intermodal terminal with associated job growth.

Growth Projects and Ongoing Australia and Overseas Expansion

80% or more of Agrisilica® product exported overseas after local manufacturing. Overseas market expected to grow significantly over time. Job creation and expansion to be realised through increased sales and product registrations.

Plans for an additional North Queensland manufacturing facility and high-volume rail solution.

Continued Engagement of North Queensland companies

Agripower currently engage local engineering consultants, construction companies, earth moving equipment, logistics providers and others.

Local company utilisation to increase over time to support expansion plans.



North Queensland Operations





Contact:

Deana Halfpenny – Project Manager – Rail and Infrastructure / e:

deana@agripower.com.au

Agripower Sales – Head Office / e: sales@agripower.com.au / p: 02 9251 8884





Re-Energising Australia with Critical Battery Materials Production

Townsville Industry Breakfast

Dr Stephen Grocott



QUEENSLAND
PACIFIC METALS

Disclaimer

COMPANY DISCLAIMER: The information in this presentation is an overview and does not contain all information necessary for investment decisions. In making investment decisions in connection with any acquisition of securities, investors should rely on their own examination and consult their own legal, business and/or financial advisers.

This document has been made available for information purposes only and does not constitute a prospectus, short form prospectus, profile statement or offer information statement. This document is not subject to the disclosure requirements affecting disclosure documents under Chapter 6D of the Corporations Act 2001 (Cth). The information in this document may not be complete and may be changed, modified or amended at any time by the Company, and is not intended to, and does not, constitute representations and warranties of the Company.

Queensland Pacific Metals Ltd does not have a significant operating history on which to base an evaluation of its business and prospects. Therefore, the information contained in this document is inherently speculative. Further, securities of companies such as the Company generally involve a higher degree of risk and are more volatility than securities of more established companies. Accordingly, an investment in the Company must be considered as speculative.

The information contained in this document has been prepared in good faith, neither the Company, Queensland Pacific Metals Ltd, or any of their respective directors, officers, agents, employees or advisors give any representation or warranty, express or implied, as to the fairness, accuracy, completeness or correctness of the information, opinions and conclusions contained in this document. Accordingly, to the maximum extent permitted by law, none of the Company, Queensland Pacific Metals Ltd, their respective directors, employees or agents, advisers, nor any other person accepts any liability whether direct or indirect, express or limited, contractual, tortious, statutory or otherwise, in respect of, the accuracy or completeness of the information or for any of the opinions contained in this document or for any errors, omissions or misstatements or for any loss, howsoever arising, from the use of this document.

This document may contain statements that may be deemed “forward looking statements”. Forward risks, uncertainties and other factors, many of which are outside the control of the Company can cause actual results to differ materially from such statements.

The Company makes no undertaking to update or revise such statements but has made every endeavour to ensure that they are fair and reasonable at the time of making this document. Investors are cautioned that any forward-looking statements are not guarantees of future performance and that actual results or developments may differ materially from those projected in any forward-looking statements made.



TECH Project

Imported ore from New Caledonia



Advanced manufacturing in Townsville



Product sold to leading battery manufacturer customers



QPM nickel and cobalt destined for EVs



QPM's target is become a significant and reliable supplier of critical battery metals for the electric vehicle industry

Global Leader in Sustainability

QPM believes that the TECH Project boasts unrivalled ESG credentials amongst developing nickel projects



Negative CO₂ emissions

- Use of waste gas results in TECH Project reducing Australia's GHG emissions by 988,000 t CO₂-eq per annum
- Equivalent of ~210,000 typical passenger vehicles
- ISO-compliant calculation – independent verification



Minimal Waste

- No tailings dam
- No process liquids discharge
- All valuable metals extracted from ore
- Progressing commercial applications for residue to make TECH Project “zero waste”



Positive working environment

- Developed nation labour laws from ore supply through to final product
- Building and fostering a high-performance culture with motivated employees working to a common goal
- Inclusive workforce
- Building diversity



Embracing Townsville & regional communities

- Acknowledgement of Traditional Owners Bindal People – CHMA executed to deliver training opportunities and jobs
- Local community sponsorships
- Establishing a presence in the community – QPM office opened
- Local University (James Cook University) projects

Zero Solids Waste

Commercialisation of the DNi Process™ will be a game changer for how nickel laterite is processed

1.6M tpa Ore (wet)
1.05M tpa Ore (dry)



~1.6% nickel / 0.18% cobalt



Key Products Nickel Sulfate
and Cobalt Sulfate



~16,000t contained Nickel



~1,800t contained Cobalt



Co-Products: Hematite, High Purity Alumina, Magnesia and
Engineered Landfill



~650,000t iron sinter pellets



~4,000t High Purity Alumina



~40,000t magnesia



~240,000 t Engineered Landfill

Helping to Solve Australia's Methane Emissions

QPM's annual carbon emissions have been calculated at **NEGATIVE 988,000t CO₂-eq per annum**

Underground Coal



Open Pit Coal

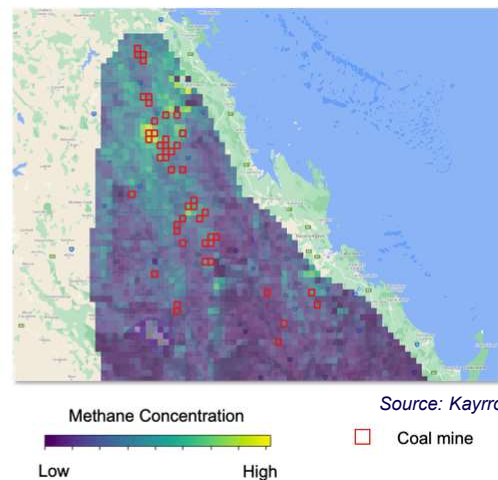


Methane emissions from metallurgical coal mining

- **Underground:** For safety reasons, the majority of gas (methane) is pre-drained and then flared ahead of mining resulting in a direct CO₂ emission. Some gas (up to 30%) is vented
- **Open pit:** Fugitive emissions of gas (methane) occur as mining proceeds. **Methane has a global warming impact 29.8 times worse than CO₂** (IPCC standard)
- Satellite imagery highlights the issue over the Bowen Basin

QPM will prevent emissions by harvesting waste gas from operating coal mines. We will use it at the TECH Project to produce battery chemicals which enable electrification of the automobile industry – a Win-Win!

Satellite imagery over Bowen Basin



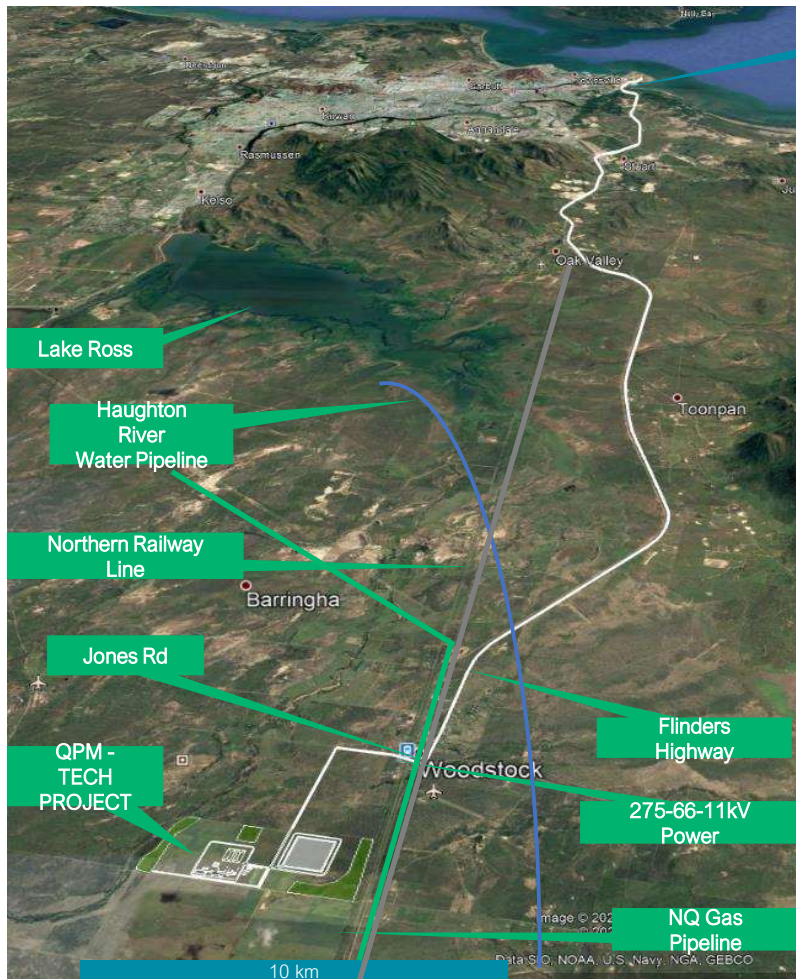
Methane Disaster



Gas leak at Nord Stream 2 as seen on 27 September 2022 (Ritzau Scanpix/via REUTERS)

- “The Nord Stream breach released between 56,000 and 155,000 tonnes of methane into the atmosphere ...”
<https://www.newscientist.com/article/2342081-nord-stream-leak-may-have-been-largest-methane-emission-ever-recorded/>
- “This is really bad, most likely the largest emission event ever detected.” *Manfredi Caltagirone, head of the International Methane Emissions Observatory for the UN Environment Program*
- Equivalent to at least 1.67Mt CO₂-equiv. **The TECH Project will save a similar amount every year!**

Project Location



TOWNSVILLE PORT



Ideal site (290 Ha) allocated to QPM in the Lansdown Eco-Industrial Precinct

- Water pipeline 17 km away
- Gas pipeline (35 PJ/y capacity – we need ~13 PJ/y)
- Electric transmission lines (275kV, 66kV and 11kV)
- Fibre optic communications
- Existing Ross River (140 MW) and future Edify (400MW) solar arrays
- Road train access to Townsville Port (Flinders Highway)
- Rail line
- Environment - gently undulating grazing land, sparsely wooded
- Zoned heavy industrial
- Cultural Heritage Management Agreement signed with Bindal People
- Skilled workforce and attractive lifestyle location

Conceptual Project Layout



Our Partners

World class shareholders and offtakers providing validation to QPM and the TECH Project



- US\$20m initial investment
- Subsequent investment at point of construction of additional US\$49m
- Offtake agreement for 37.5% of Ni/Co sales for first 8 years, increasing to 100%
- Committed to also purchase 100% of Ni/Co in Stage 2 TECH Project expansion
- >US\$25 billion of trade over 30 years



- US\$10.5m initial investment
- Offtake agreement for 43.75% of Ni/Co sales for first 8 years
- 2nd largest battery manufacturer in the world



- US\$14.5m initial investment
- Offtake agreement for 18.75% of Ni/Co sales for first 8 years
- Major supplier of cathode active materials which goes into batteries

The DNi Process™

- Nitric acid leach under atmospheric conditions
- Majority valuable metals dissolved in solution, recovered and refined to saleable products
- ~99% nitric acid recycled
- Zero solids waste + no tailings dam required
- Extensively piloted and tested
- License from Altilium Group (patent holders)



QPM Pilot Plant located at ALS Global Hydrometallurgy Centre of Excellence, Perth, WA



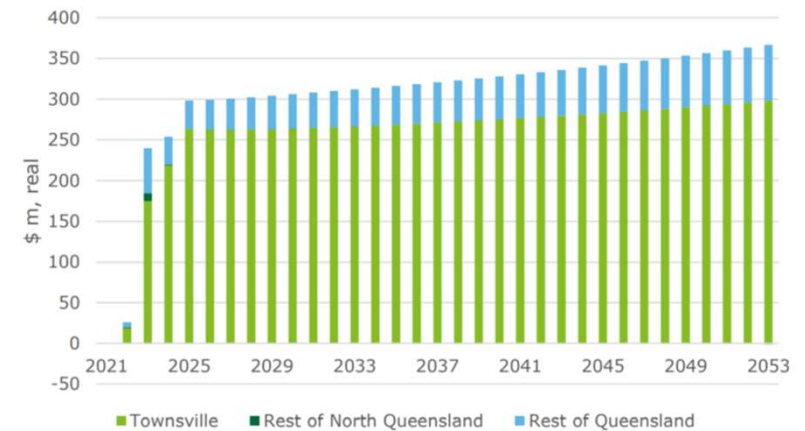
(L-R): Crushed ore, Ni-Co MHP, Hematite, Inert Residue for Landfill

National Benefits – mostly Townsville region

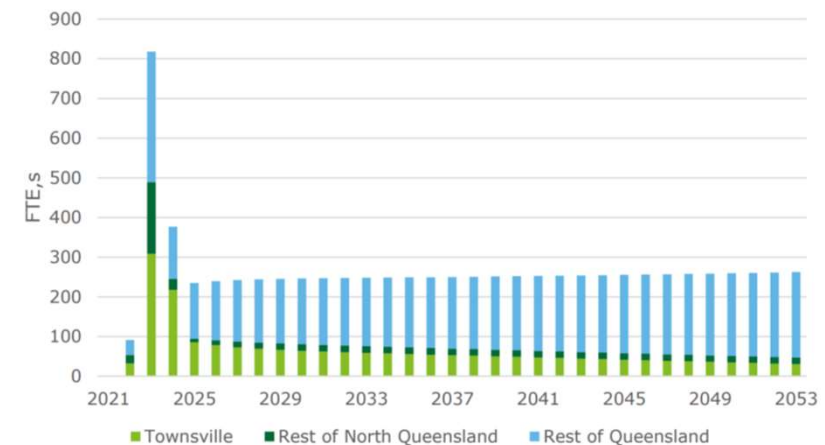
Direct Benefits:

- 1,000+ jobs in construction
- 300+ direct jobs in operation
- Estimated 1,900+ indirect supply chain jobs using QRC employment multiplier
- ~\$500 million annual operating costs – majority spent in Qld/Townsville
- Baseload customer establishing domestic gas industry in the Northern Bowen Basin – direct benefit to grid stability and power generation
- Spin-off industries enabled by secure gas supply into Townsville region
- Significant reduction in carbon emissions from use of waste gas from coal mines, approaching 1,000,000 tonnes per annum (more than 200,000 passenger vehicles)
- First mover in Lansdown – establishing the precinct
- Production of engineered landfill for use in flood prone land (e.g. within the Townsville State Development Area)

Deloitte Modelling – Gross Regional Product Impact



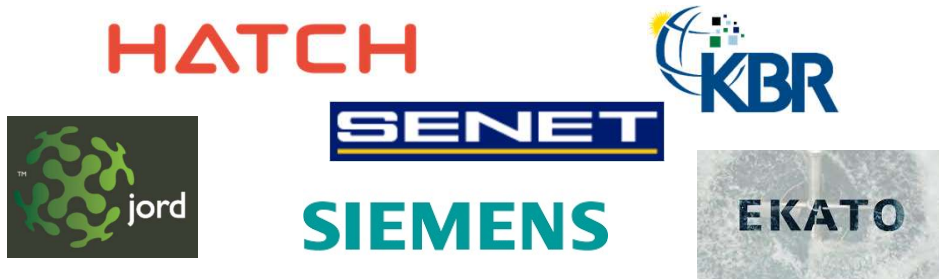
Deloitte Modelling – Employment Impact



Commercial in confidence

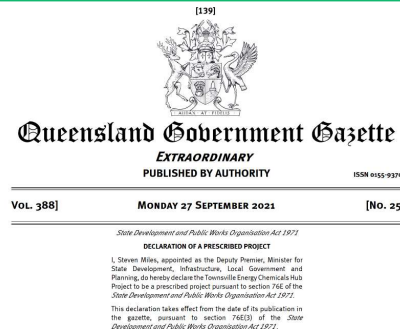
Pathway to Production

Feasibility Study + Key Equipment Vendors



Targeting FS completion November 2022
Final Investment Decision 2023

Approvals



Project of State Significance - Qld
Targeting receipt of approvals in the near term

Potential Debt Financiers



Conditional commitment letters received from Government
backed lenders + EOLs from other financiers

Binding offtake agreements



Three Tier 1 offtakers for 100% of Nickel and Cobalt production

Corporate Overview

Capital Structure

Market Cap	\$294m
Share Price	17.0c
Pro forma Cash	\$49.0m
Top 20	36%

Major Shareholders

General Motors	177.2m	9.9%
LG Energy Solutions	99.2m	5.7%
BNP Paribas Noms Pty Ltd (DRP)	59.0m	3.4%
Citicorp Nominees	43.1m	2.5%
POSCO GEM 1 ST FUND	42.5m	2.4%

Board and Key Management

John Abbott	Non Exec Chair
Stephen Grocott	Managing Director
John Downie	Exec Director
Jim Simpson	Non Exec Director
Sharna Glover	Non Exec Director
Eddie King	Non Exec Director

Trading History



All information as of 16 Nov 2022

QPM TECH Project

PATHWAY FOR NICKEL & COBALT PRODUCTION



Trade and Investment Queensland

Take your business further, faster.

Denise Kreymborg
Director
Regional Queensland



**TRADE +
INVESTMENT**
QUEENSLAND



About Trade and Investment Queensland

- + We're the Queensland Government's dedicated agency for global trade and investment
- + We have 18 international offices and 8 regional Queensland locations
- + Through our Austrade TradeStart partnership, we also have access to a further 69 international offices and 5 landing pads for global start-ups
- + Specialist sector teams - Food and agribusiness, Health, innovation and technology, International education and training, Manufacturing, Mining, resources and energy



How we support business

- + Provide export development and investment attraction advice and support
- + Provide support to develop market entry strategies and action plans
- + Enable access to TIQ initiatives and grant programs
- + Arrange inbound and outbound missions, international introductions and site visits
- + Provide introductions to industry and service providers
- + Provide market intelligence
- + Liaise with government and partner with local councils, economic development agencies and private service providers to identify 'investment-ready' projects

Grants and other support

- + **New Market Program** (Existing exporter)
- + **Go Global Export Program** (New or existing exporter)
- + **eCommerce Program**
- + **Export Market Development** (Austrade promotional activities)
- + **Market Finder** - is an export decision-making application that assist with the identification of products and markets with realistic shorter-term 'untapped' export potential

Thank you

North Queensland Regional Advisors:

Mitch Rawlins

Principal Trade and Investment Officer (TradeStart Advisor)

T: +61 481 322 971

E: mitch.rawlins@tiq.qld.gov.au

Kris Jennings

Senior Trade and Investment Officer

T: +61 476 418 262

E: kris.jennings@tiq.qld.gov.au

Martin Rush

Senior Trade and Investment Officer

T: +61 476 418 262

E: martin.rush@tiq.qld.gov.au

TIQ.QLD.GOV.AU



**TRADE +
INVESTMENT**
QUEENSLAND



Defence Industry Hub, Townsville



Queensland
Government

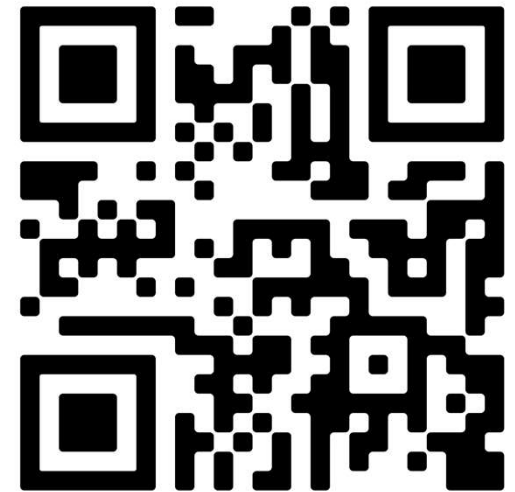
Workshops and Events

- Workshops
 - Introduction to Defence(Thursday 24th November)
 - Marketing to Defence
 - Cyber (for DISP) (Tuesday 29th November)
 - Collaborations and Partnerships
- Defence Industry Projects Update – 7 December
- More workshops planned for 2023 – please contact us to receive notifications

Are you in the Queensland Defence Industries Capability Directory

Want to build your company's profile and promote your capabilities?

Register for free via our website –
www.defenceindustries.qld.gov.au or scan the QR code



Defence and Aerospace Industry Development Fund (DAIDF)

The DAID Fund program has been established to support Queensland SMEs to acquire internationally recognised certification.

- Open to businesses currently in the defence, aerospace or space sector or who demonstrate the capability and intention to do so
- Financial assistance of up to \$30,000 (excluding GST) in matched funding (up to 50%) or up to 75% for ATSI business.

Round 3 closes 9 December

Defence Industry Hub Contacts

- Amy Savage, Manager
Amy.Savage@dsdilgp.qld.gov.au
- Erin Kiernan, Principal Industry Development Officer
Erin.Kiernan@dsdilgp.qld.gov.au

AEWC

Life Is On

Schneider
Electric

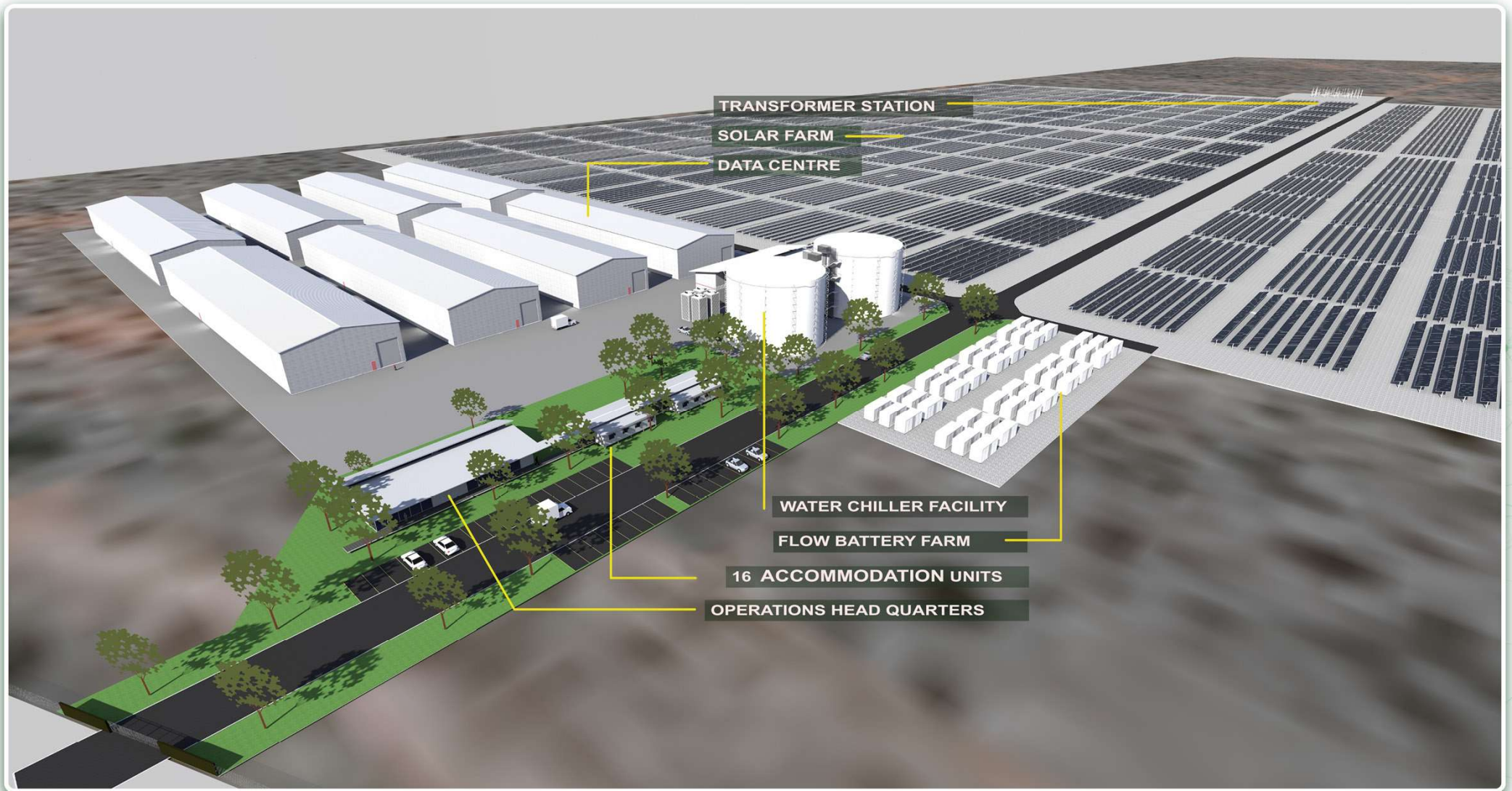
LATAN DATA CENTRE Renewable Energy Facility

Northern Australia's Green Energy Powered Data Centre.

Digital Infrastructure and Renewable Energy Project by AEWC with Schneider Electric as Technology Partner

- 5MW IT Load Capacity at the Modular Data Centre (with room to significantly scale on 158-hectare site).
- 55MW Solar on-site Energy Generation with 40MW Battery Storage.
- Access to fast global connectivity via Darwin – Jakarta – Singapore Subsea Cable and via the Sunshine Coast (Maroochydore) Subsea cable to the Pacific.
- First Stage of Project scheduled to commence in August 2023 and to be operational by February 2025.
- Safe Secure Data Processing, Storage and Transmission facility to service Northern Australia and South-East Asia.
- Situated in close proximity to the Singapore Army Training Base in North Queensland.



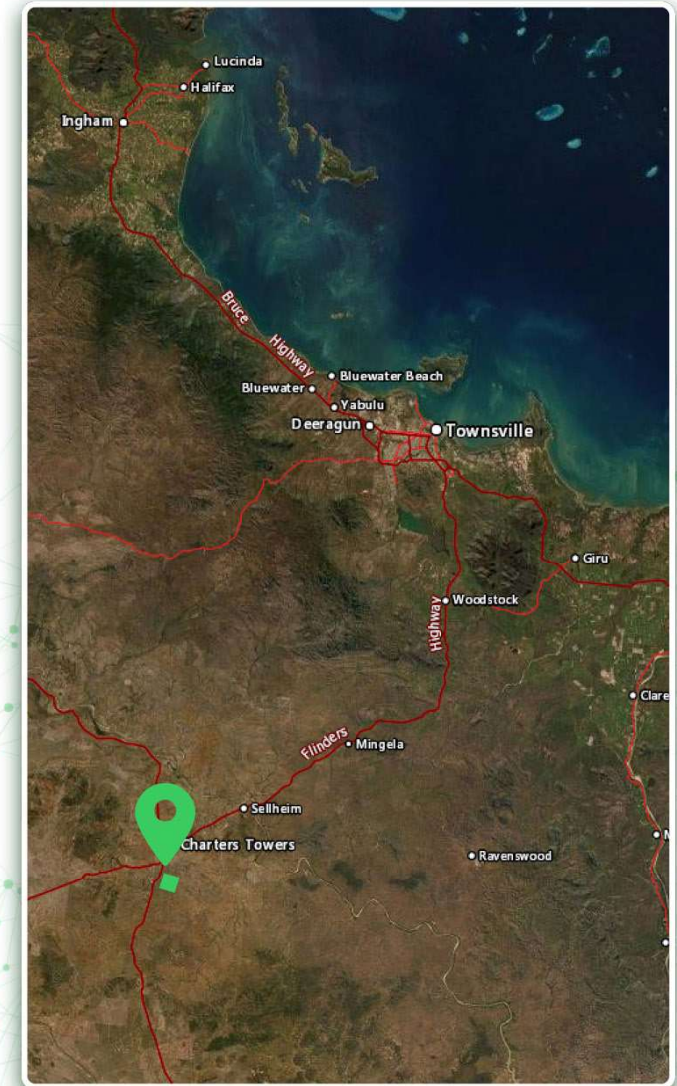




Latan Data Centre

147km from North Queensland's largest city of Townsville and 24 km from the regional town of Charters Towers.

- Situated within the **renewable energy triangle area** with on-site generated green energy and access to other solar and wind energy providers.
- The focus of the Modular Data Centre is on **green energy** (with the application of best practices in green design, construction, and operations to reduce environmental impacts).
- Access to multiple pathways of **connectivity** (including to the DJSC subsea cable and the Sunshine Coast (Maroochydore) subsea cable).
- **Secure** physical site **outside of the cyclone zone** and not prone to flooding or other natural disasters.
- **Flexibility** of the Data Centre to **meet the specific needs of each customer** and particularly wholesale customers requiring significant IT Load capacity.
- Ability to **significantly scale** to meet growing customer demands for IT load capacity.



BUSINESS DRIVERS:



Situated within a growth area of North Queensland and in close proximity to Singapore Army Training Facility and High Priority Industries identified by the Queensland Government such as Hydrogen, Defence and Mining Equipment, Technology & Services.



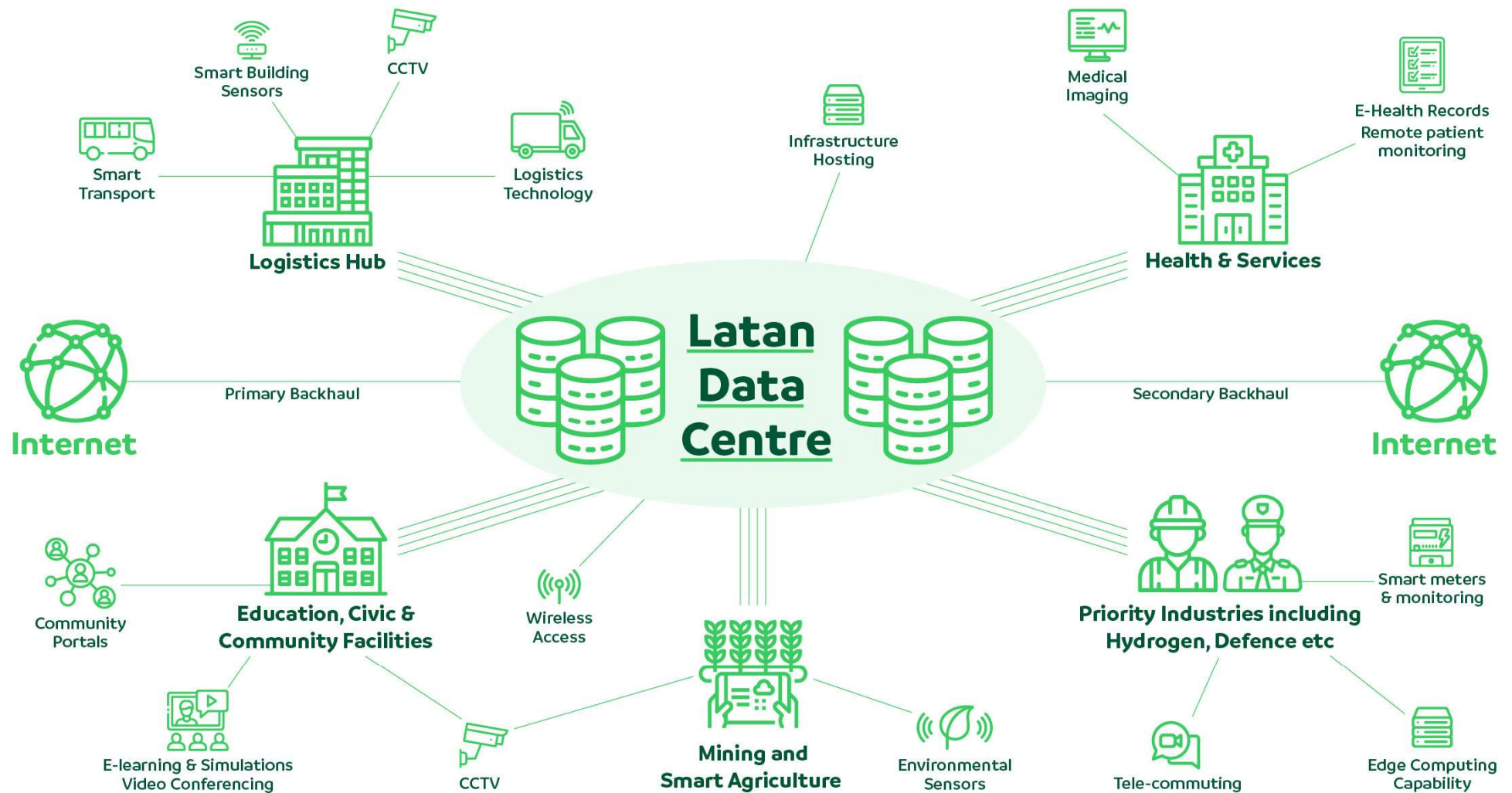
As part of Northern Australian providing a Data Centre Hub for South- East Asia.



Providing Data Centre Services to North Queensland's largest city of Townsville whose economy includes investment in science, research, education and health.



Providing North Queensland businesses with access to reliable zero carbon, zero water, edge computing facilities.



Data Centre Specifications

- Location: Mountain View Road, Seventy Mile, QLD
- IT Capacity: 5 MW
- Technical Space: 5,000m²
- Rack Capacity: 750*
- Power Usage Effectiveness: < 1.4*
- Carbon Emissions Factor: 0.0 CO₂-e/kWh
- Water Consumption: 0.0 ML/year
- NABERS: ★★★★★
- Reliability: Tier I to IV supported.
- Security: up to PSPF Zone 4
- Cooling: Customer dependent. Direct liquid enabled.
- Power: Customer dependent. N+N enabled.
- Power Backup: x MWh Battery, x MWh Cold Storage, x MW Gas Turbine.
- VESDA Fire Detection
- Inert Gas Fire Suppression
- Leak Detection
- Secure Undercover Loading/Unloading
- Open access for all fibre operators

Details of an All-In-One

Entrance Lobby/Electrical Room

- Isolated entrance room from IT space
- Main Input Electrical panels
- Fire Suppression controls, alarm and tanks (typically Novac 1230 system)
- Sub-system panels for cooling controls, emergency/security, house electrical (lighting and outlets)

IT Space

- Symmetra or Galaxy UPS
- Power distribution – Modular or Busway
- NetShelter racks and metered rPDUs
- Hot/Cold Containment system built into module structure
- Cooling System – Overhead, In-Row (CW or DX), or Wall Mount DX
- Cable trays suspended from ceiling
- Fire suppression piping
- Dehumidifier and optional humidifier
- Air recovery unit
- LED lighting

ISO Containers have unique solutions to maximize space constraints:

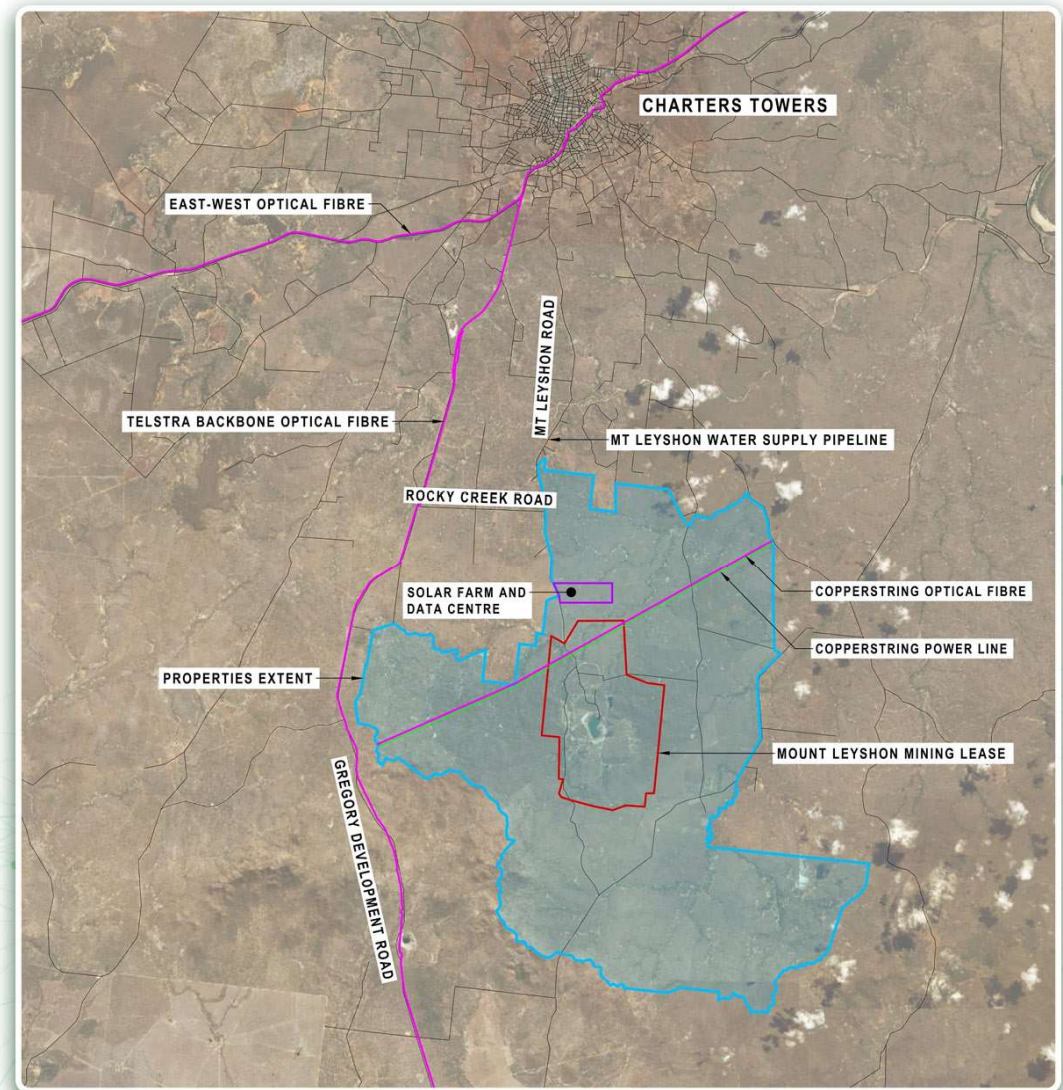
Sliding track system for racks and flexible cable trays allow racks to slide forward and backward for easy access and mounting of IT equipment.



Connectivity

The current connectivity options are:

- Telstra Backbone Fibre (Gregory Highway)
- Copperstring 2.0 – (2025)
- East/West Fibre (Townsville – Mt Isa)
- Microwave Link



Construction Over 3 Stages

Constructed over 3 stages, the Data Centre will scale to 5MW IT Load capacity with room to further scale.



1. STAGE

Scheduled commencement of construction on site in August 2023 and operational in February 2025:

- Data Centre 500KW IT Load Capacity – Solar Farm 4MW and Battery Storage 4.8MW.



2. STAGE

Operational February 2026:

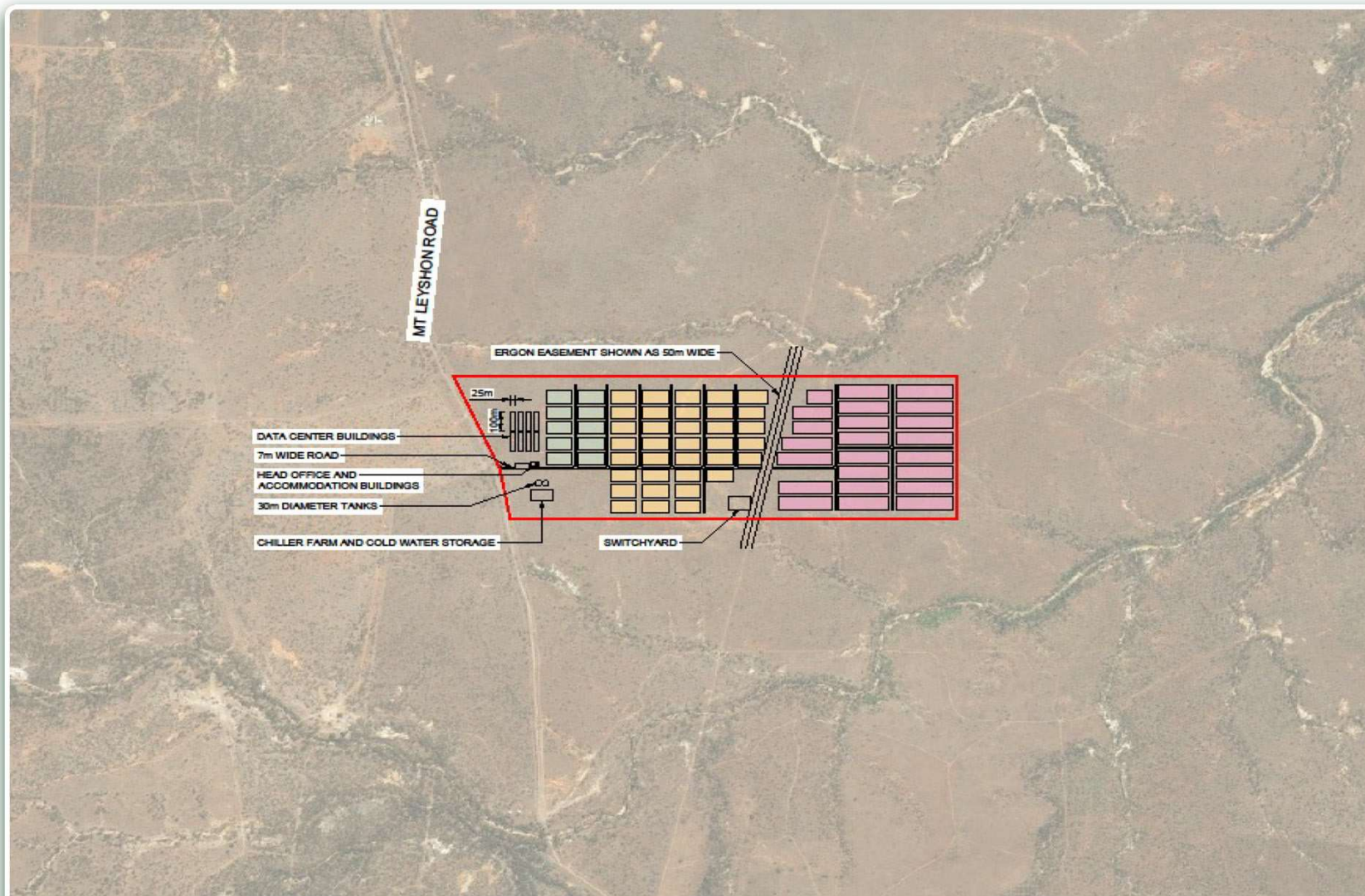
- Data Centre 2.5MW IT Load Capacity – Solar Farm 27.5MW and Battery Storage 21MW.



3. STAGE

Operational February 2028:

- Data Centre 5MW IT Load Capacity – Solar Farm 55MW and Battery Storage 40MW.



LEGEND:

- SOLAR FARM - STAGE 1
- SOLAR FARM - STAGE 2
- SOLAR FARM - STAGE 3

Project Preliminary Costs

\$161M CONSTRUCTION:



1. STAGE \$26M



1. STAGE \$58M



1. STAGE \$77M

The modular design of the Data Centre will enable scaling to stay in step with demand and thereby reducing capital and operating costs. This scaling underpins the business case for the Data Centre.

Project Opportunities for Stage 1

AEWC is in the process of finalising the ILUA with the Jangga People and then proceeding with the Development Applications and detailed design.

The technology partner for the project is Schneider Electric. There will be subcontract opportunities in relation to the IT, cooling and power fit out of the initial 2,500m² building plus exterior water chillers and powertrain to cater for initial take up load capacity + energy microgrid system.

There is a project opportunity for Stage 1 building and civil works where the scope will include the construction of:

- initial 2,500m² building (with the installation of gantry crane);
- office and accommodation buildings;
- sealed road will be extended to the complex with sealed parking area;
- intruder resistant perimeter fence around the Data Centre area with security services that include:
 - CCTV and electronic door access controls;
 - PSPF secure zoning applications.
- Solar farm.

More detail about the project opportunities and scope will be released in the first quarter of 2023.

LATAN DATA CENTRE

Renewable Energy Facility

PROJECT PARTNERS, CUSTOMERS AND INVESTORS

The Latan Data Centre will provide a safe and secure data processing, storage and transmission facility for Australian and South-East Asian customers.

Contact:

AEWC

Suite 211 Level 2, 520 Flinders Street
Townsville Qld 4810

T +61 7 4771 5971

E T.Hockings@aewcorp.com.au

W aewcorp.com.au

AEWC

Life Is On

Schneider
Electric



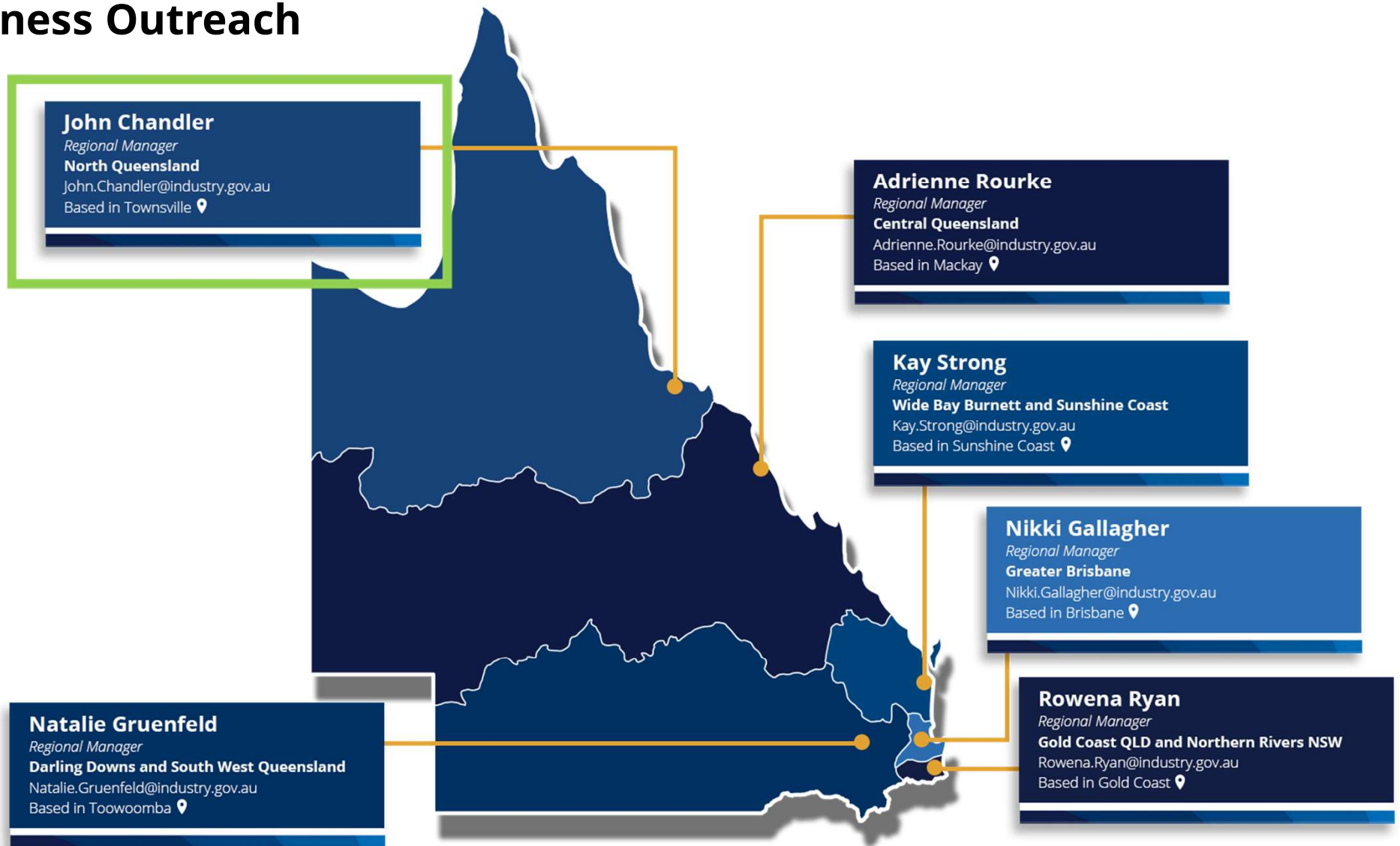
Australian Government
Department of Industry,
Science and Resources

AusIndustry

Townsville Industry Breakfast

Mario Martini

QLD Business Outreach





Australian Government

Take your business journey with the Australian Government



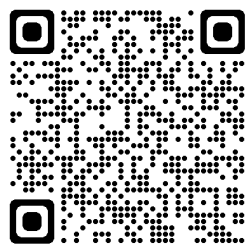


Australian Government
Department of Industry,
Science and Resources

AusIndustry

R&D Tax Incentive

Register your R&D activities with AusIndustry, then claim your tax offset through your annual tax return with the ATO



Micro-X Limited – Leveraging carbon nano-tube technology to save lives

Under the R&DTI, Micro-X Limited saw the opportunity to use carbon nano-tube technology in mobile X-ray carts to improve the portability.



Offset costs for your research and development



Heuch – Empowering businesses and communities to be self-sufficient and economically sustainable

Under the R&DTI, Heuch delivered refrigeration, heating and off-grid power solutions to remote Australia.



Collaborate with research service providers

R&D Tax Incentive

Innovate and grow through research and development



- Tax offset that covers some of your R&D costs
- Offset rate based on your company turnover
- Refundable when turnover less than \$20 million



- Jointly administered - must register with AusIndustry to claim with the ATO
- Eligibility requirements for companies and R&D activities
- Must keep records



- Can contract or collaborate with a research service provider
- Can claim tax offset if no commercial outcome if eligibility requirements met

National Reconstruction Fund

NRF is a \$15 billion investment to transform Australia's industrial base

NRF will provide loans, guarantees and equity to drive investments that add value and capability in priority areas

NRF will be modelled on the Clean Energy Finance Corporation (CEFC). It will be governed by an independent board, with investment decisions made by the board based on the Australian Government's priorities, as set out in an investment mandate

The NRF's 7 priority areas are:

- Renewables and low emission technologies
- Medical science
- Value-add in resources
- Transport
- Value-add in agriculture, forestry and fisheries
- Defence capability
- Enabling capabilities including critical technologies and advanced manufacturing

business.gov.au

Empowering
Australian
businesses to
achieve their goals



business.gov.au | call 13 28 46

For further information
please contact the
Queensland team.

John Chandler

Regional Manager

North Queensland

John.Chandler@industry.gov.au

Based in Townsville 📍

Adrienne Rourke

Regional Manager

Central Queensland

Adrienne.Rourke@industry.gov.au

Based in Mackay 📍

Kay Strong

Regional Manager

Wide Bay Burnett and Sunshine Coast

Kay.Strong@industry.gov.au

Based in Sunshine Coast 📍

Nikki Gallagher

Regional Manager

Greater Brisbane

Nikki.Gallagher@industry.gov.au

Based in Brisbane 📍

Rowena Ryan

Regional Manager

Gold Coast QLD and Northern Rivers NSW

Rowena.Ryan@industry.gov.au

Based in Gold Coast 📍

Natalie Gruenfeld

Regional Manager

Darling Downs and South West Queensland

Natalie.Gruenfeld@industry.gov.au

Based in Toowoomba 📍

Mario Martini

0409 066 475

mario.martini@ep.industry.gov.au

John Chandler

Regional Manager

North Queensland

John.Chandler@industry.gov.au

Based in Townsville 📍

We appreciate your feedback!

- » Townsville Industry Breakfast series – Feedback form
- » Scan QR code
- » A link will also be provided in an email later today, along with a copy of today's presentations
- » Thank you in advance for your time on this



Keep in the loop...

- » Follow us on Eventbrite for our events and workshops...
- » Next Townsville Industry Breakfast – late Feb/early March stay tuned



Thank you

James Doyle

Regional Director North Queensland

State Development Infrastructure, Local Government & Planning

Contact us:

DSDILGP North Queensland Regional Office

- Townsville.NQRO@dsdilgp.qld.gov.au
- Ph: 07 4758 3405



Queensland
Government