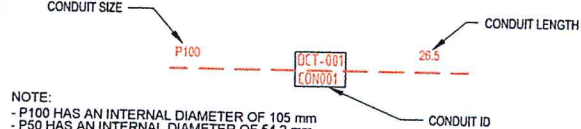


CONDUIT CONFIGURATION

CONDUITS AND DUCTS ARE IN LAYER:
 < L460 NBN Support - Underground >
 AND TERMINOLOGY CATEGORISED INTO TWO GROUPS IN THE DRAWINGS AS PER BELOW:

- 1- DUCT USED WITH LOCAL NETWORK
- 2- CONDUIT USED WITH LEAD-IN DROPS



LEGEND

- TRANSFORMER / KIOSK / PAD MOUNT SUB-STATION / POLE MOUNT TRANSFORMER
- FIBRE DISTRIBUTION HUB FDH CABINET
- ACO CABLEMATE TYPE 2 PLASTIC PIT OR SIMILAR
- ACO CABLEMATE TYPE 5 PLASTIC PIT OR SIMILAR
- ACO CABLEMATE TYPE 8 PLASTIC PIT OR SIMILAR
- ACO CABLEMATE TYPE 9 PLASTIC PIT OR SIMILAR
- EXISTING NBNC Co PIT
- SHARED TRENCH
- ZERO LOT PROPERTY BOUNDARY
- END CAP CONDUIT WITH STATION NO.
- CAP SERVICE CONDUIT (P50/P20) P20=P23 mm NBNC Co SERVICE CONDUIT
- LOCAL CONDUIT (P100/P50)
- EXISTING CONDUIT
- NBNC Co STAGE BOUNDARY
- NBNC Co LNC BOUNDARY

NOTE:

1. PITS TO BE LOCATED CLEAR OF THE PILLAR EXCLUSION ZONE.
2. PITS TO INCLUDE LID GASKET.
3. SERVICE CONDUITS TO EXTEND 1m INSIDE THE FRONT PROPERTY BOUNDARY. FOR DISTANCES FROM SIDE PROPERTY BOUNDARY, REFER APPLICABLE PIT LAYOUT DETAILS OR SERVICE CONDUIT DETAIL FOR BOUNDARIES WITHOUT NBN PIT. CONTRACTORS TO THE TELECOMMUNICATIONS CAUTION TAPE TO END OF SERVICE CONDUITS AND EXTEND TO ABOVE GROUND LEVEL FOR FUTURE CONDUIT LOCATION.
4. CONDUITS TO ENTER AND EXIT AT ENDS OF PITS ONLY. LOCATE CONDUITS AS CENTRALLY IN PIT END WALLS AS POSSIBLE. MINIMUM SEPARATION BETWEEN CONDUITS TO BE 25 mm. REFER TO THE PIT END WALL DETAILS FOR ADDITIONAL REQUIREMENTS.
5. MINIMUM COVER TO BE: 300 mm FOR SERVICE DROP CONDUITS, 450 mm IN VERGE, 600 mm UNDER LOCAL ROADS, AND 800 mm UNDER MAIN ROADS.
6. CONDUITS ARE TO BE CLEANED AND PROVEN USING A MANDREL. AFTER TESTING INSTALL A SUITABLE DRAW ROPE AND CAP CONDUIT ENDS. SEAL CONDUITS AT PITS TO PREVENT ENTRY OF DUST AND MOISTURE.
7. INSTALL NON CONDUCTIVE (METAL FREE) MARKER TAPE ABOVE ALL NBNC Co CONDUITS, 300 mm BELOW FINISHED GROUND LEVEL.
8. REFER TO ERGON ENERGY STANDARD DRAWINGS 5228 AND 5168 SHEETS 1 TO 3 FOR SHARED TRENCH CROSS SECTIONS.
9. REFER TO NBNC Co DOCUMENT NO. NBN-TE-CTO-194 (DEPLOYMENT OF THE NBN CO CONDUIT AND PIT NETWORK - GUIDELINES FOR DEVELOPERS) FOR DETAILED SPECIFICATION.
10. GRADE TOP OF PIT TO MATCH VERGE / FOOTPATH.
11. THERE ARE A TOTAL OF 27 RESIDENTIAL DWELLINGS OVER 18 LOTS, MADE UP OF 14 SINGLE, ONE DUPLEX, ONE TRIPLEX AND TWO MULTI DWELLING UNITS CONSISTING OF 4 DWELLINGS EACH.
12. ALL OF THE STAGE IS TO BE FED FROM EXISTING FDH INSTALLED IN STAGE 1A. REFER TO NBN Co PROJECT NO: AYCA-E0ERS FOR DETAILS.
13. WHERE REQUIRED, SUPPLY AND INSTALL SERVICE AND ROAD CROSSING CONDUIT SHOWN IN THE PIT LAYOUTS.
14. WHERE CONDUIT BURIAL DEPTH IS LESS THAN THAT SPECIFIED IN THE NBNC Co DEPLOYMENT OF CONDUIT AND PIT NETWORK GUIDELINES, SUPPLY AND INSTALL CONCRETE COVER (FOR VERGE AND FOOTPATH) / CONCRETE ENCASMENT (FOR ROADWAYS) ENSURE THAT MINIMUM SEPARATION TO ALL OTHER SERVICES ARE MAINTAINED.
15. WHERE SPECIFIED ON THE SITE PLAN, NBN Co CONDUIT TO BE INSTALLED UNDERNEATH STORM WATER. REFER TO THE NBN Co DEPLOYMENT OF CONDUIT AND PIT NETWORK GUIDELINES FOR THE MINIMUM CLEARANCES REQUIRED.
16. SUPPLY AND INSTALL ADDITIONAL DEVIATING CONDUIT BENDS TO ACHIEVE THE INCREASED / DECREASED BURIAL DEPTH REQUIRED TO AVOID CLASH WITH OTHER SERVICES.
17. TRENCHING IS REQUIRED OVER EXISTING CONDUITS AND OTHER SERVICES FRONTING LOT 225. USE CARE WHEN INSTALLING NBN CONDUITS TO AVOID DAMAGE TO EXISTING INFRASTRUCTURE.

SAFETY FIRST
SAFETY STARTS WITH YOU

STAFF WORKING ON THIS ESTIMATE PLEASE NOTE:
The location of other authorities services which may affect this work have not been obtained by the estimator. Constructor to obtain service information before commencing.

AS CONSTRUCTED BY
COASTAL ENERGY (07 5456 1800)
PRINT *BRAD CATHE*
SIGNED
DATE 12/12/2013



LAYOUT PLAN
SCALE 1:500 @ A1

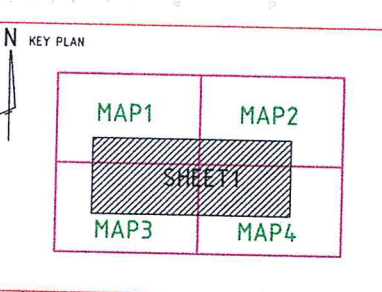
****ATTENTION****
CONSTRUCTORS DO NOT
change or alter job
specifications unless first
checking with designer.

REV	DATE	DRAFTER	DESCRIPTION	APPROVED
A	29/05/13	RB	ISSUED FOR CONSTRUCTION	
3	03/04/13	RB	AMENDED AS PER NBN Co COMMENTS	
2	04/03/13	RB	FOR APPROVAL	
1	01/02/13	RB	PRELIMINARY FOR TENDER	

NBNC Co APPROVAL RECORD:

DD	SIGNATURE	DATE
<input type="checkbox"/>		
<input type="checkbox"/>		
<input type="checkbox"/>		

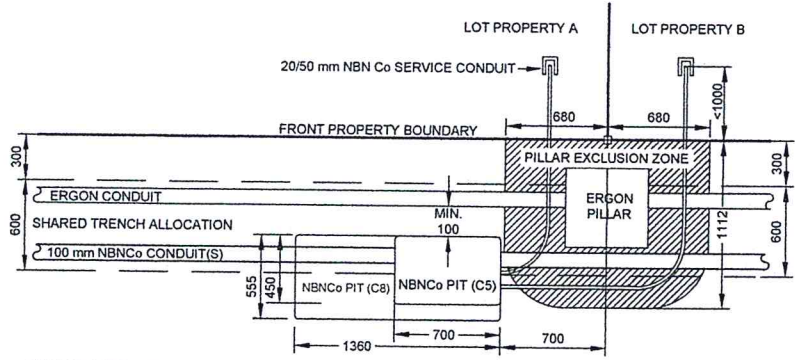
QUALITY RECORD:
 NBNC Co DISCLAIMER
 THIS DOCUMENT HAS BEEN PREPARED SOLELY FOR THE USE OF NBNC Co LIMITED (ABN 86 136 533 741) FOR USE IN MAINTAINING NBNC Co FACILITIES. IT HAS NOT BEEN CREATED FOR ANY OTHER USE. IT SHOULD NOT BE SCALED TO LOCATE NBNC Co ASSETS. NO WARRANTY IS GIVEN THAT THE INFORMATION IS ACCURATE OR COMPLETE.



FOR CONSTRUCTION

DRAWING TITLE:
CLEARVIEW RISE STAGE TWO
NBN Co PIT AND PIPE DESIGN
SITE PLAN

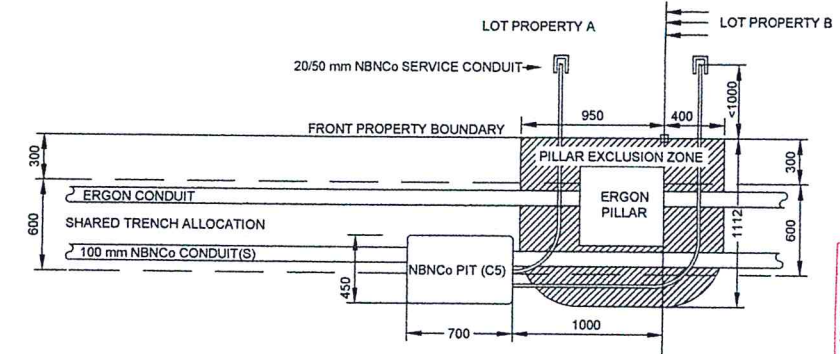
STATE: QLD	REGION: SW
FSA:	FSAM: FDA:
PROJECT No: AYCA-HDUCO	
CADREF No: 2093-T01	
SCALE AS SHOWN	SHEET No. 1 OF 2
	REV. A



STANDARD PIT LOCATION

(SCALE 1:25 @ A1)

- NOTE: - WHERE REQUIRED, MIRROR REVERSE.
 - ENSURE PIT IS CLEAR OF THE PILLAR EXCLUSION ZONE. CLOSEST END OF PIT TO BE LOCATED 700 mm FROM THE PROLONGATION OF DIVIDING PROPERTY BOUNDARY.
 - NBN Co PIT MUST NOT SIT ABOVE ERGON ELECTRICAL CONDUITS. ENSURE MINIMUM 100mm HORIZONTAL CLEARANCE FROM THE TOP OF THE PIT TO THE EDGE OF THE ELECTRICAL CONDUIT(S) WHERE REQUIRED.

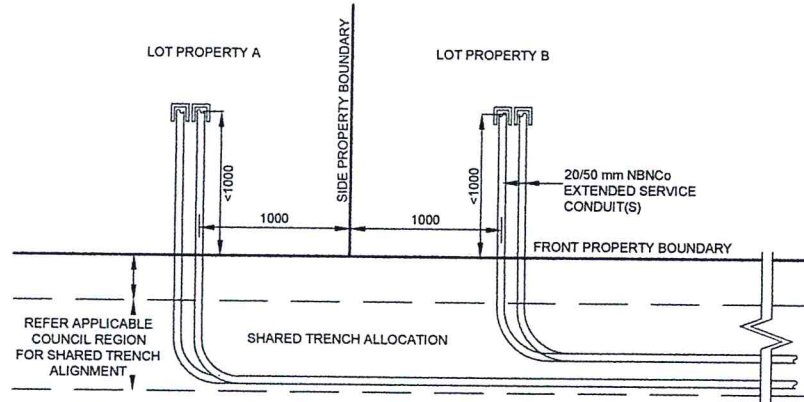


STANDARD PIT LOCATION (ZERO LOT BOUNDARY)

(SCALE 1:25 @ A1)

- NOTE: - WHERE REQUIRED, MIRROR REVERSE.
 - SIDE OF PIT TO BE LOCATED 650 mm FROM FRONT PROPERTY BOUNDARY.
 - CLOSEST END OF PIT TO BE LOCATED 1000 mm FROM THE PROLONGATION OF DIVIDING PROPERTY BOUNDARY.
 - NBN Co PIT MUST BE CLEAR OF PILLAR EXCLUSION ZONE.
 - ENSURE PIT IS NOT PLACED ABOVE ERGON CONDUITS. PIT TO MAINTAIN MINIMUM 100mm HORIZONTAL CLEARANCE TO ERGON CONDUITS IN SHARED TRENCH.

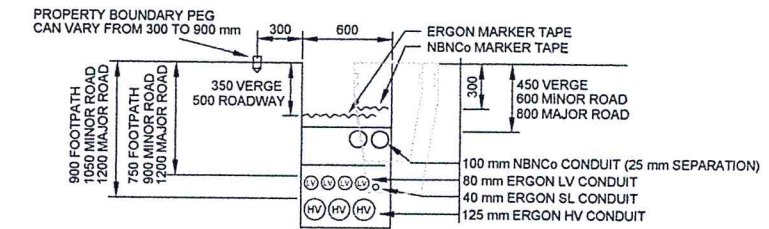
AS CONSTRUCTED BY
 COASTAL ENERGY (07 5458 1800)
 PRINT *BRAD BATHIE*
 SIGNED
 DATE 12.12.2013



SERVICE CONDUIT DETAIL FOR BOUNDARIES WITHOUT NBN PIT

- NOTE: - WHERE REQUIRED, MIRROR REVERSE (SCALE 1:25 @ A1)
 - REFER SITE PLAN FOR CORRECT SIZE AND BOUNDARY FOR SERVICE CONDUIT INSTALLATION.
 - WHERE SPECIFIED IN SITE PLAN, INSTALL ADDITIONAL SERVICE CONDUIT(S).

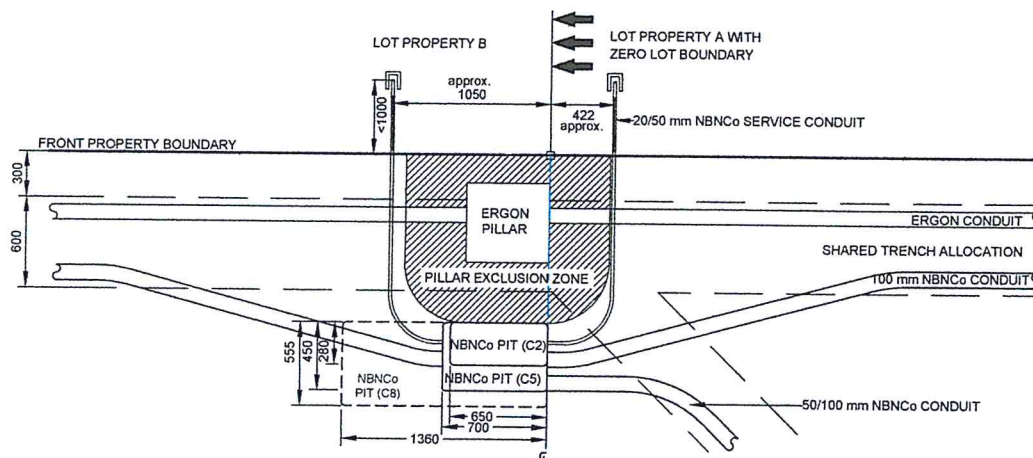
NOMINAL NBN Co PIT SIZES				
PIT TYPE	PIT SIZE	LENGTH (mm)	WIDTH (mm)	DEPTH (mm)
SERVICE DROP ACCESS PIT / BOUNDARY PIT (MAXIMUM 50 mm CONDUIT ENTRY)	C2	650	280	565
BOUNDARY PIT / LOCAL NETWORK PIT	C5	700	450	650
LOCAL NETWORK CONNECTION PIT	C8	1360	555	860
DISTRIBUTION PIT	C8	1360	555	860
FDH PIT	C9	2000	555	900



STANDARD TRENCH SECTION (MK)

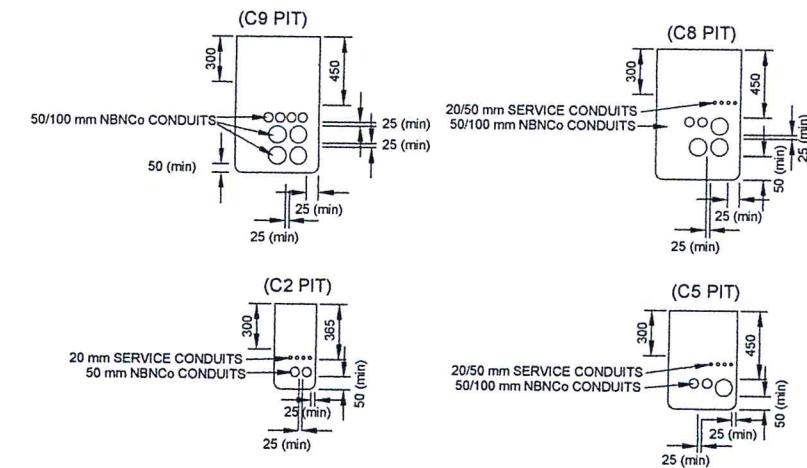
(SCALE 1:25 @ A1)

ERGON CONDUIT TYPE	SEPARATION FROM ERGON CONDUITS	
	PARALLEL SEPARATION (mm)	CROSSING SEPARATION (mm)
LV/SL	100	100
HV	300	100



PIT LAYOUT NO. 9 - PIT IN FRONT OF PILLAR, NO ERGON CROSS ROAD CONDUIT (ZERO LOT BOUNDARY)

- NOTE: - WHERE REQUIRED, MIRROR REVERSE (SCALE 1:25 @ A1)
 - ENSURE PIT TO BE CLEAR OF THE PILLAR EXCLUSION ZONE
 - ENSURE PIT TO BE CLEAR OF THE ZERO LOT BOUNDARY OR PLANNED DRIVEWAY FOR NEIGHBOURING LOT
 - WHERE REQUIRED, INSTALL SHOWN NBN Co CONDUIT



TYPICAL PIT END WALL DETAILS

(SCALE 1:25 @ A1)

FOR CONSTRUCTION

****ATTENTION****
 CONSTRUCTORS DO NOT
 change or alter job
 specifications unless first
 checking with designer.

REV	DATE	DRAFTER	DESCRIPTION	APPROVED
A	29/05/13	RB	ISSUED FOR CONSTRUCTION	
2	04/03/13	RB	FOR APPROVAL	
1	01/02/13	RB	PRELIMINARY FOR TENDER	

NBN Co APPROVAL RECORD:

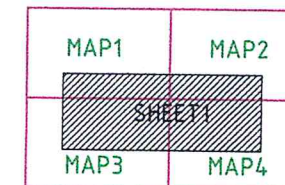
DD	SIGNATURE	DATE
<input type="checkbox"/>		
<input type="checkbox"/>		
<input type="checkbox"/>		

QUALITY RECORD:

NBN Co DISCLAIMER
 THIS DOCUMENT HAS BEEN PREPARED SOLELY FOR THE USE OF NBN Co LIMITED (ABN 86 136 533 741) FOR USE IN MAINTAINING NBN Co FACILITIES. IT HAS NOT BEEN CREATED FOR ANY OTHER USE. IT SHOULD NOT BE SCALED TO LOCATE NBN Co ASSETS. NO WARRANTY IS GIVEN THAT THE INFORMATION IS ACCURATE OR COMPLETE.



KEY PLAN



DRAWING TITLE:
 CLEARVIEW RISE STAGE TWO
 NBN Co PIT AND PIPE DESIGN
 PIT AND TRENCH DETAILS

STATE: QLD	REGION: SW
FSA:	FSAM: FDA:
PROJECT No: AYCA-HOUCCO	
CADREF No: 2093-T02	
SCALE AS SHOWN	SHEET No. 2 OF 2
	REV. 2