


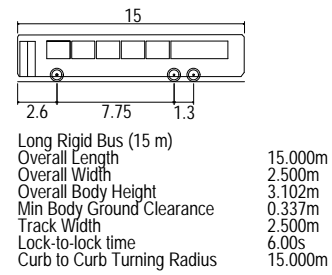


LEGEND
DESIGN

	PASSENGER PARKING
	BUS PARKING
	PAINTED ISLAND

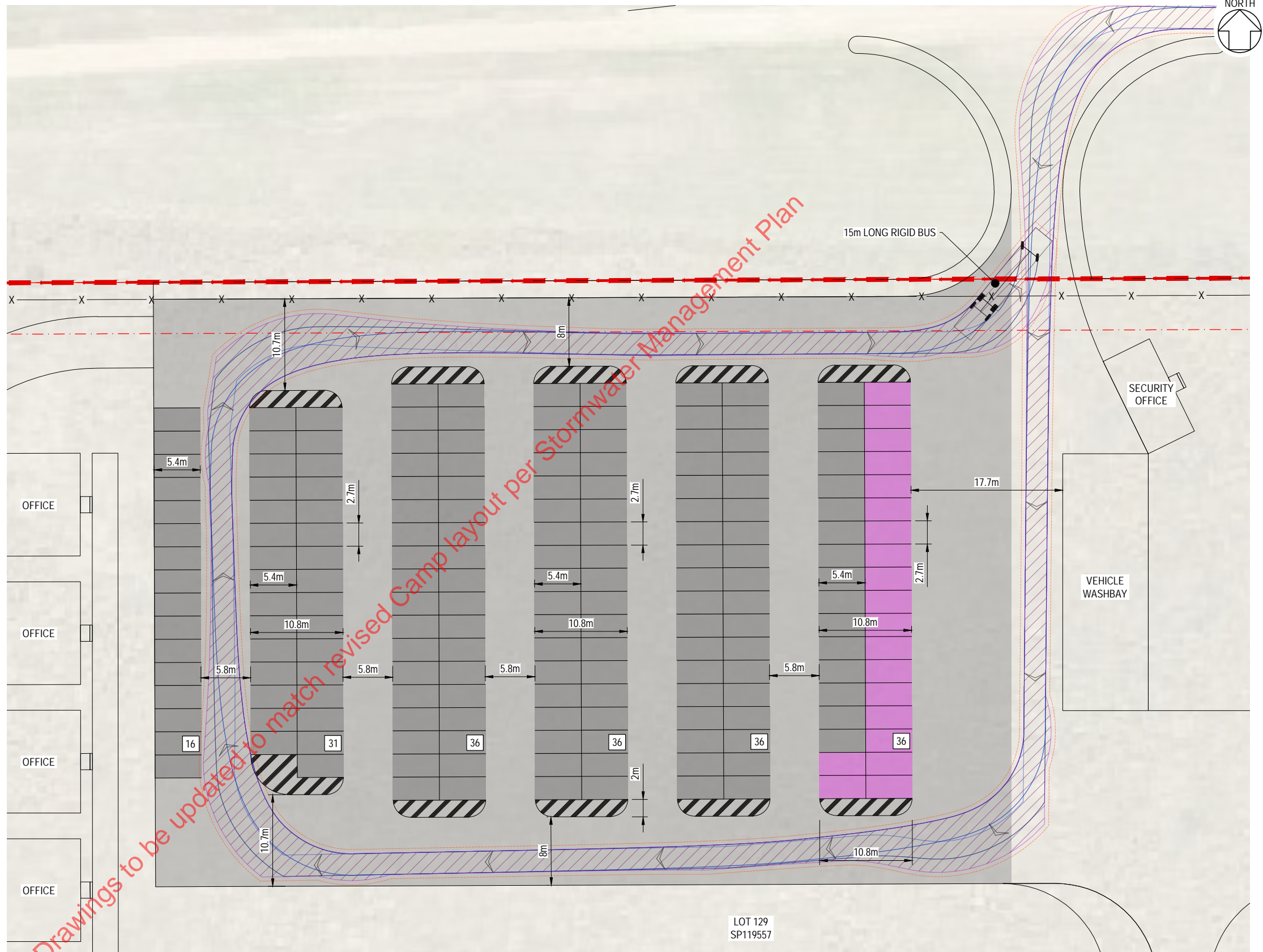
PARKING TABLE	
TYPE	NUMBER
PASSENGER	171
12 SEAT MINIBUS	20



MINIBUS IS A 5.2m NOMINAL LENGTH 12 SEATER (TOYOTA HIACE OR SIMILAR)

NOTES:

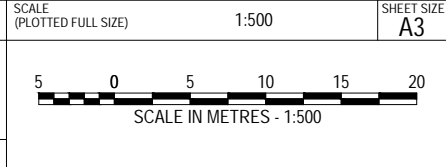
1. THE DESIGN SHOWN IS PRELIMINARY ONLY AND SUBJECT TO CHANGE AT DETAILED DESIGN.
2. CAR PARKS TO BE IN ACCORDANCE WITH ASAS2890.1 PARKING FACILITIES - OFF-STREET CAR PARKING.
3. SUFFICIENT CIRCULATION WIDTH TO BE PROVIDED TO ENABLE A 15m BUS TO MANOUVRE AROUND THE PARKING PERIMETER.
4. THE MAIN CAR PARK AND ACCESS ROAD IS TO BE A 2 COAT SPRAY SEALED FLEXIBLE PAVEMENT.
5. PARKING BAYS TO BE DEMARCATED WITH SUITABLE LINE MARKING AND SIGNAGE IN ACCORDANCE WITH THE MANUAL OF UNIFORM TRAFFIC CONTROL DEVICES (MUTCD) TO CONSIDER VEHICLES AND PEDESTRIANS.



REFERENCE FILES ATTACHED: CU2-HU00-XRF-PAS-100-1950; CU2-HU00-XRF-PAS-100-1850; CU2-HU00-XRF-PAS-100-1155; CU2-HU00-XRF-PAS-100-1115; CU2-HU00-XRF-PAS-100-1130; CU2-HU00-XRF-PAS-100-1125

DRAWING REVISION HISTORY					
No.	DESCRIPTION	DRAWN	DESIGNED	REVIEWED	DATE
0	ISSUE FOR APPROVAL	D.McKenzie	D.McKenzie	A.Boal	08/09/2023

APPROVED	
ORIGINAL COPY ON FILE "e" SIGNED BY Arthur Boal RPEQ 10564	
SIGNED	
DATE	08/09/2023



pitt&sherry

pittsh.com.au Phone 1300 748 874 ABN 67 140 184 309

© 2023 PITT & SHERRY (OPERATIONS) PTY LTD. THE DOCUMENT MAY ONLY BE USED FOR THE PURPOSE FOR WHICH IT WAS COMMISSIONED AND IN ACCORDANCE WITH THE TERMS OF ENGAGEMENT.

CLIENT	UGL / CPB JV
PROJECT	COPPERSTRING 2032 - CAMPS CONSTRUCTION FACILITIES
STATUS	FOR APPROVAL

DRAWING TITLE		HUGHENDEN - CAMP & LAYDOWN CARPARK LAYOUT PLAN	
DATUMS:	GDA20 Z55	CLIENT No.	CU2
DRAWING No.	CU2-HU00-DRG-PAS-100-0020	REVISION	0
Feb. 8, 24 - 14:33:36 Name: CU2-HU00-DRG-PAS-100-0020.dwg Updated By: David McKenzie			

PAS FORM DRG-A3 REV - 8

