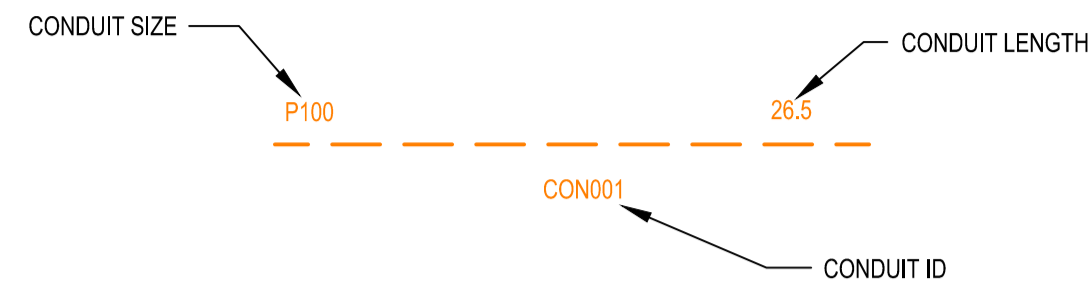


CONDUIT CONFIGURATION

CONDUITS ARE CATEGORIZED INTO TWO GROUPS AND DRAWING IN FOLLOWING LAYERS:
1- MAIN CIVIL-CONDUIT-MAIN
2-DROP CIVIL-CONDUIT-DROP
 ATTRIBUTES ATTACHED TO CONDUITS ARE AS SHOWN



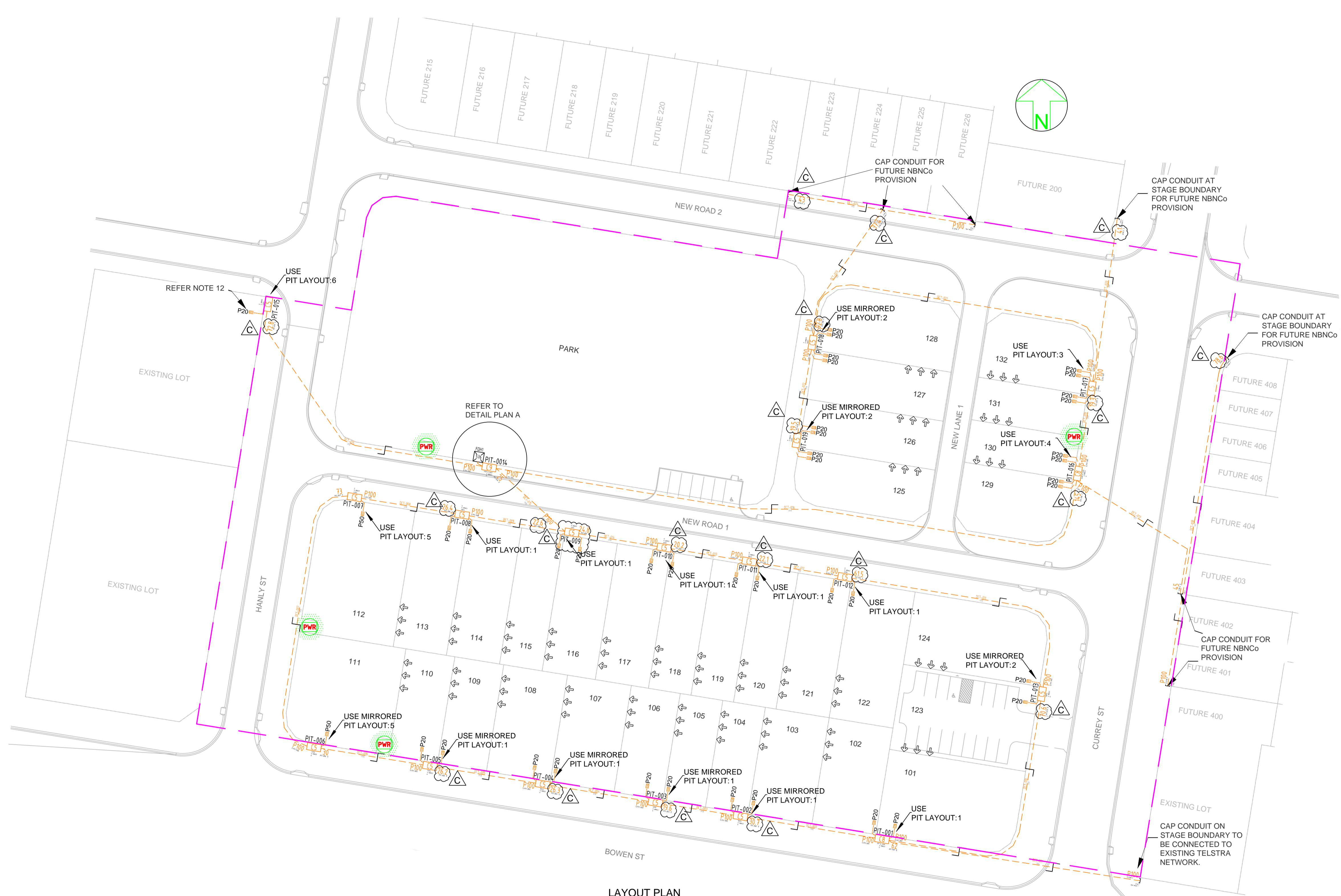
NOTE:
 - P100 HAS AN INTERNAL DIAMETER OF 115 mm
 - P50 HAS AN INTERNAL DIAMETER OF 54.2 mm
 - P20 HAS AN INTERNAL DIAMETER OF 23.2 mm

LEGEND

	TRANSFORMER / KIOSK / PAD MOUNT SUB-STATION / POLE MOUNT TRANSFORMER		SHARED TRENCH
	FIBRE DISTRIBUTION HUB FDH CABINET		ZERO LOT PROPERTY BOUNDARY
	ACO CABLEMATE TYPE 2 PLASTIC PIT OR SIMILAR		END CAP CONDUIT WITH STATION NO.
	ACO CABLEMATE TYPE 5 PLASTIC PIT OR SIMILAR		CAP SERVICE CONDUIT (P50/P20) P20-P23 mm NBNC _o SERVICE CONDUIT
	ACO CABLEMATE TYPE 8 PLASTIC PIT OR SIMILAR		LOCAL CONDUIT (P100/P50)
	ACO CABLEMATE TYPE 9 PLASTIC PIT OR SIMILAR		EXISTING CONDUIT
	EXISTING NBNC _o PIT		NBNC _o STAGE BOUNDARY
			NBNC _o LNC BOUNDARY

NOTE:

- PITS TO BE LOCATED CLEAR OF THE PILLAR EXCLUSION ZONE.
- PITS TO INCLUDE LID GASKET.
- SERVICE CONDUITS TO EXTEND 1m INSIDE THE FRONT PROPERTY BOUNDARY.
- CONDUITS TO ENTER AND EXIT AT ENDS OF PITS ONLY. LOCATE CONDUITS AS CENTRALLY IN PIT END WALLS AS POSSIBLE. MINIMUM SEPARATION BETWEEN CONDUITS TO BE 25 mm. REFER TO THE PIT END WALL DETAILS FOR ADDITIONAL REQUIREMENTS.
- MINIMUM COVER TO BE: 300 mm FOR SERVICE DROP CONDUITS, 450 mm IN VERGE, 600 mm UNDER LOCAL ROADS, AND 800 mm UNDER MAIN ROADS.
- CONDUITS ARE TO BE CLEANED AND PROVEN USING A MANDREL. AFTER TESTING INSTALL A SUITABLE DRAW ROPE AND CAP CONDUIT ENDS. SEAL CONDUITS AT PITS TO PREVENT ENTRY OF DUST AND MOISTURE.
- INSTALL NON CONDUCTIVE (METAL FREE) MARKER TAPE ABOVE ALL NBNC_o CONDUITS, 300 mm BELOW FINISHED GROUND LEVEL.
- REFER TO ERGON ENERGY STANDARD DRAWINGS 5228 AND 5168 SHEETS 1 TO 3 FOR SHARED TRENCH CROSS SECTIONS.
- REFER TO NBNC_o CO GUIDE - INSTALLING PIT AND CONDUIT INFRASTRUCTURE - GUIDELINE FOR DEVELOPERS FOR DETAILED SPECIFICATION.
- GRADE TOP OF PIT TO MATCH VERGE / FOOTPATH.
- THERE ARE A TOTAL OF 32 RESIDENTIAL LOTS MADE UP OF 22 SINGLE, 8 DOUBLE, AND 2 MULTI DWELLING UNITS.
- DEVELOPER SHALL NEGOTIATE WITH AND GAIN PERMISSION OF PROPERTY OWNER PRIOR TO INSTALLATION OF NBNC_o SERVICE CONDUIT INTO ANY EXISTING LOT.



LAYOUT PLAN
SCALE 1:500 @ A1

AS CONSTRUCTED

STAFF WORKING ON THIS ESTIMATE PLEASE NOTE:
 The location of other authorities services which may affect this work have not been obtained by the estimator. Constructor to obtain service information before commencing.

SAFETY FIRST
 SAFETY STARTS WITH YOU

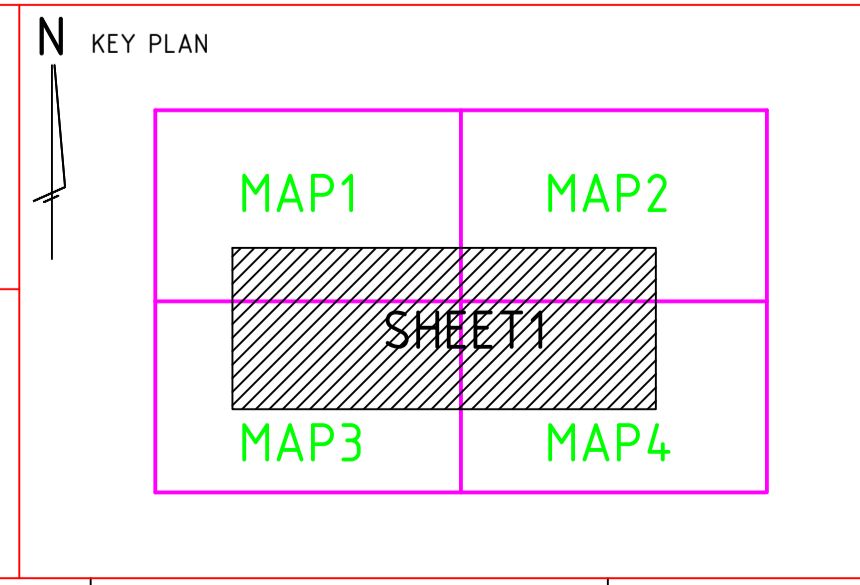
****ATTENTION****
CONSTRUCTORS DO NOT
 change or alter job specifications unless first checking with designer.

REV	DATE	DRAFTER	DESCRIPTION	APPROVED
C	19/09/12	RB	AS CONSTRUCTED - AMENDED CONDUIT LENGTHS AND MOVED PIT-009 EAST AS SHOWN	
B	10/01/12	LD	RELOCATION OF PIT-006 AND PIT-007	
A	28/11/11	LD	FOR CONSTRUCTION	
1	03/11/11	LD	FOR APPROVAL	

NBNC_o APPROVAL RECORD:
 SIGNATURE _____ DATE _____
 DD
 WD
 AB

QUALITY RECORD :
 NBNC_o DISCLAIMER
 THIS DOCUMENT HAS BEEN PREPARED SOLELY FOR THE USE OF NBNC_o LIMITED (ABN 86 136 533 741) FOR USE IN MAINTAINING NBNC_o FACILITIES. IT HAS NOT BEEN CREATED FOR ANY OTHER USE. IT SHOULD NOT BE SCALED TO LOCATE NBNC_o ASSETS. NO WARRANTY IS GIVEN THAT THE INFORMATION IS ACCURATE OR COMPLETE.

spa consulting engineers
 Suite 7/132 Collins Avenue, Edge Hill QLD 4870
 Tel: (07) 4032 3311 Fax: (07) 4032 5633
 PO Box 664N North Cairns QLD 4870
 Email Address: mail@spaconslting.com.au
A business unit of J2 Design and Drafting Pty Ltd. acn 676646416



DRAWING TITLE:
BOWEN STREET ULDA STAGE 1
NBNC_o PIT AND PIPE DESIGN
SITE PLAN

STATE: QLD	REGION: ROMA
FSA:	FSAM: FDA:
PROJECT No: AYCA-E0ERS	
SPA DWG No: 2026-T01	
SCALE AS SHOWN	SHEET No. 1 OF 3 REV. C