



Boggo Road

Cross River Rail Priority Development Area
Draft Development Charges and Offset Plan
Not Government Policy
February 2022

Acknowledgement of Country

*We acknowledge the Traditional Owners of the land on which we live and work
We pay our respects to the Elders, past and present*

*Throughout time, Brisbane, the land by the river, has been a path of transport for all people
A place of connection, a place of many tracks*

*The Ancestors and Elders travelled this terrain long ago
Following tracks that we follow today*

We recognise their connection to this country, the waterways and community

*As we build this path through Country
While we tunnel deep beneath our river*

Laying tracks for greater connection, creating new places for the future

We acknowledge the rich traditions and stories of the past

At the many places we are working to bring this Project to life

Across Brisbane, the Gold Coast, and greater South-East Queensland

*With an open heart and mind, we hope to learn from the traditions, stories, customs and
practices of Australia's First Nations people*

Together, as we build this track for the future.

The Department of State Development, Infrastructure, Local Government and Planning connects industries, businesses, communities and government (at all levels) to create place-based solutions that leverage regional strengths and unlock sustainable growth.

Copyright

This publication is protected by the Copyright Act 1968.

Creative Commons Licence



This work, except as identified below, is licensed by the Department of State Development, Infrastructure, Local Government and Planning under a Creative Commons Attribution (CC BY) 4.0 Australia licence. To view a copy of this licence, visit: <http://creativecommons.org.au/>

You are free to copy, communicate and adapt this publication, as long as you attribute it as follows:

© State of Queensland, the Department of State Development, Infrastructure, Local Government and Planning, February 2022.

Third party material that is not licensed under a Creative Commons licence is referenced within this document. All content not licensed under a Creative Commons licence is all rights reserved. Please contact the Department of State Development, Infrastructure, Local Government and Planning/the copyright owner if you wish to use this material.

Translating and interpreting service



If you have difficulty understanding a document and need an interpreter, we provide access to a translating and interpreting service. You will not be charged for this service. To contact the Translating and Interpreting Service, telephone 131 450 and ask them to telephone the Department of State Development, Infrastructure, Local Government and Planning on +61 7 3328 4811.

Disclaimer

While every care has been taken preparing this publication, to the extent permitted by law, the State of Queensland accepts no responsibility and disclaims all liability (including without limitation, liability in negligence) for all expenses, losses (including direct and indirect loss), damages and costs incurred as a result of decisions or actions taken as a result of any data, information, statement or advice, expressed or implied, contained within. To the best of our knowledge, the content was correct at the time of publishing.

Any references to legislation are not an interpretation of the law. They are to be used as a guide only. The information in this publication is general and does not take into account individual circumstances or situations. Where appropriate, independent legal advice should be sought.

Copies of this publication are available on our website at www.statedevelopment.qld.gov.au and further copies are available upon request.

Economic Development Queensland

13 QGOV (13 74 68)

edq@dsdilgp.qld.gov.au

www.statedevelopment.qld.gov.au

GPO Box 2202, Brisbane, Queensland 4002

1 William Street, Brisbane 4000

Table of Contents

1	Preliminary	1
1.1	Economic Development Act	1
1.2	Boggo Road Cross River Rail Priority Development Area	1
1.3	Application of the Development Charges and Offset Plan	1
1.4	Purpose of the DCOP	1
1.5	Review of the DCOP	2
2	Development charges	3
2.1	Charge categories	3
2.2	Development charge rates for reconfiguring a lot or material change of use	4
2.3	Calculating a development charge	7
2.4	Calculating an infrastructure charge	7
2.5	Credits for infrastructure charges	7
2.6	Development exempt from development charges	8
2.7	Interim use charges	8
2.8	Indexation of development charges	8
2.9	Payment of development charges	8
3	Infrastructure offsets and refunds	9
3.1	Application of an offset	9
3.2	Requesting a provisional trunk infrastructure offset	9
3.3	Works contribution – cost estimate	10
3.4	Land contribution – cost estimate	11
3.5	Determining a request for a provisional trunk infrastructure offset	11
3.6	Timing of a final trunk infrastructure offset	11
3.7	Application for a final trunk infrastructure offset	12
3.8	Deciding a final trunk infrastructure offset	12
3.9	Trunk infrastructure refunds	12
3.10	Entitlement to a refund	13
3.11	Determining a request for a refund	13
4	Trunk infrastructure plans	14
4.1	Schedules of works	14
4.2	Trunk infrastructure maps	16
5	Definitions	20

Table of Contents

List of Tables

Table 1	Charge categories and uses	3
Table 2	Infrastructure charge rates for reconfiguring a lot	4
Table 3	Infrastructure charge rates for material change of use	4
Table 4	Schedule of future trunk infrastructure works – Water Supply	13
Table 5	Schedule of future trunk infrastructure works – Stormwater	13
Table 6	Schedule of future trunk infrastructure works – Transport (Active)	13
Table 7	Schedule of future trunk infrastructure works – Parks and community facilities	14
Table 8	Priority infrastructure/external contributions	14
Table 9	Defined terms	19

List of Maps and Figures

Figure 1	Boggo Road PDA boundary	2
Map 1	Water supply future DCOP trunk infrastructure plan	15
Map 2	Stormwater future DCOP trunk infrastructure plan	16
Map 3	Transport (Active) future DCOP trunk infrastructure plan	17
Map 4	Parks and community facilities future DCOP trunk infrastructure	18

1 Preliminary

1.1 Economic Development Act

The *Economic Development Act 2012* (the ED Act)¹ establishes the Minister for Economic Development Queensland (MEDQ) as a corporation sole to exercise the functions and powers of the ED Act.

The main purpose of the ED Act² is to facilitate economic development, and development for community purposes, in the state. The ED Act³ seeks to achieve this by establishing the MEDQ and providing for a streamlined planning and development framework for particular parts of the state declared as priority development areas (PDAs).

The ED Act⁴ provides for the MEDQ to fix charges and other terms for the provision of infrastructure in PDAs.

This document is the Development Charges and Offset Plan (DCOP) made by the MEDQ⁵ for the Boggo Road Cross River Rail PDA.

1.2 Boggo Road Cross River Rail Priority Development Area

The Boggo Road Cross River Rail PDA (the PDA) was declared by regulation^{6/7} on 2 October 2020.

The PDA is approximately 39 hectares of land and is generally bounded by Burke Street to the north, Cornwall Street to the south, Annerley Road to the west, and Ipswich Road to the east. The PDA does not include Dutton Park State Primary School or the new Brisbane South State Secondary College (Inner City South State Secondary College) although these facilities have an important relationship to the health, science, innovation, research, and education focus of the PDA. The boundaries of the PDA are shown on Figure 1.

1.3 Application of the Development Charges and Offset Plan

The Boggo Road Cross River Rail PDA DCOP is made by the MEDQ and is applicable to all development on land and water within the boundaries of the PDA.

The DCOP became effective on [Insert date](#).

1.4 Purpose of the DCOP

The DCOP is a policy document which is intended to provide guidance to the MEDQ on infrastructure matters for a development application and states the following for the PDA:

1. the development charge for the provision of trunk infrastructure for the following networks:
 - a. wastewater
 - b. water supply
 - c. stormwater
 - d. transport
 - e. parks and community facilities
2. the trunk infrastructure plans and schedules of works, and
3. matters relevant to calculating a credit, offset or refund for the provision of trunk infrastructure.

¹ See section 8 of the ED Act.

² See section 3 of the ED Act.

³ See section 4 of the ED Act.

⁴ See section 10 of the ED Act.

⁵ See section 10 of the ED Act.

⁶ See section 37 of the ED Act.

⁷ At the time of declaration, the MEDQ delegated certain functions and powers to the Cross River Rail Delivery Authority for plan preparation and development assessment, including the administration of the DCOP.

Development charges will contribute to funding the cost of trunk infrastructure which is proposed to service development within the PDA.

The DCOP prevails over other EDQ instruments concerning charges, credits, offsets and refunds, including, without limitation the following EDQ guidelines or practice notes:

1. Practice Note 16 Calculation of offsets for affordable and diverse housing, and
2. Practice Note 17 Calculation of offsets for ecologically sustainable design.

1.5 Review of the DCOP

To ensure the charging and offset frameworks remain relevant, it is planned to be reviewed by the MEDQ every five years.

The aim of the review is to ensure that the purpose of the DCOP remains relevant and that the charges collected still cover the construction costs for the infrastructure as identified in this document. It is understood that some key infrastructure networks may vary to provide better efficiency in infrastructure delivery.

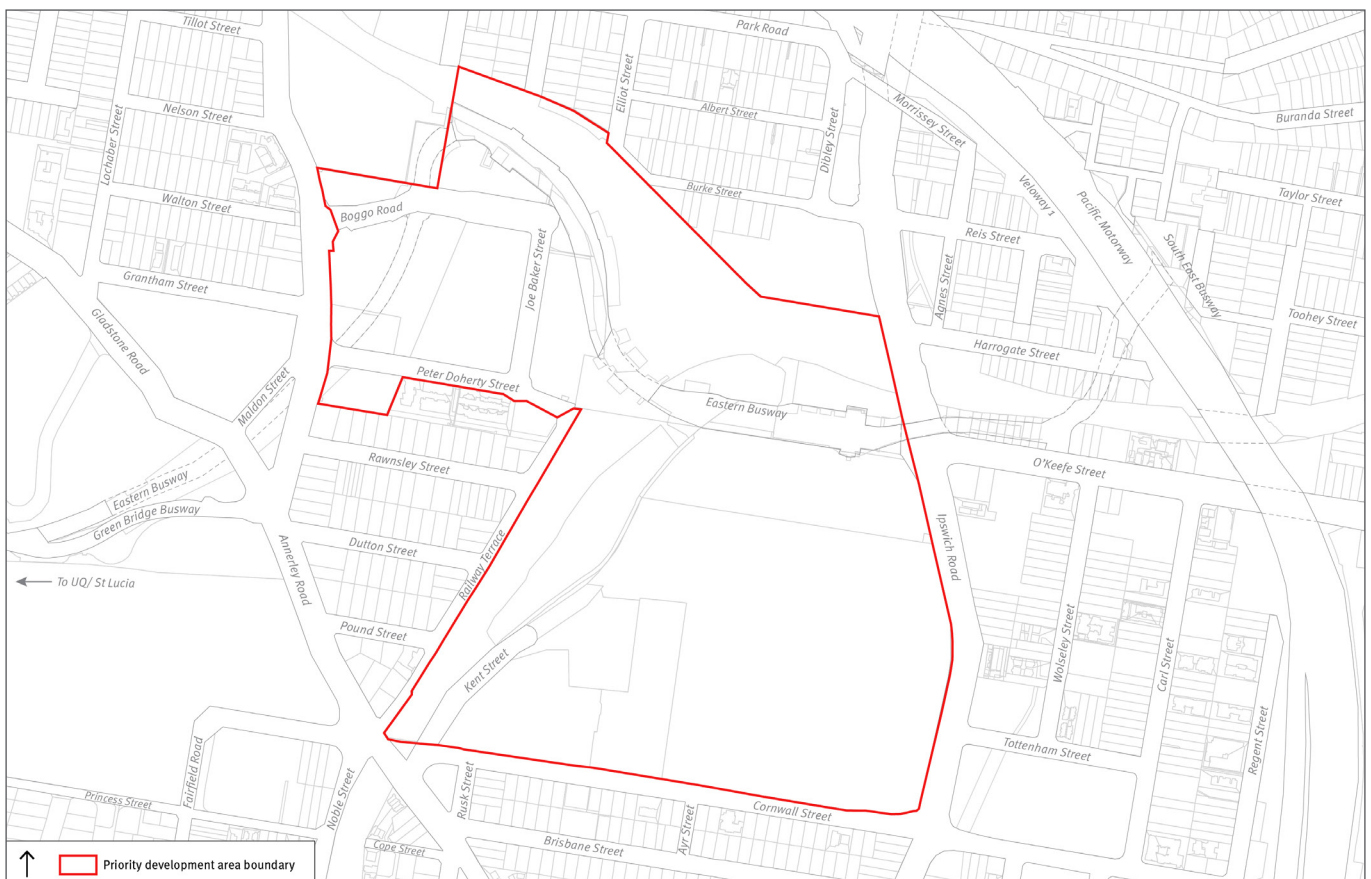


Figure 1: Boggo Road PDA boundary (Source: CRRDA Boggo Road Interim Land Use Plan Oct 2020)

This figure is for illustration purposes and is not to scale.

2 Development charges

2.1 Charge categories

This DCOP categorises the uses defined in the PDA development scheme stated in column 2, into the charge categories stated in column 1, Table 1.

Where a “use” is not listed in column 2 of Table 1 (including where a “use” is unknown because the PDA development application does not specify a proposed “use” or where a “use” is undefined in the PDA development scheme), the MEDQ will determine the appropriate charge category to apply based on an assessment of the “use” and the demand placed upon the trunk infrastructure networks by the development.

Table 1: Charge categories and uses

Column 1 Charge Category	Column 2 Use type under the PDA development Scheme
Residential development	
Residential	Dwelling house, Dual occupancy, Caretaker’s accommodation, Multiple dwelling, Dwelling unit
Accommodation (long-term)	Community residence, Relocatable home park, Retirement facility, Rooming accommodation (boarding house, community dwelling, hostel, orphanage, children’s home)
Accommodation (short-term)	Hotel (areas for providing accommodation), Short-term accommodation, Tourist park, Resort complex
Non-residential development	
Places of assembly	Club, Community use, Function facility, Funeral parlour, Place of worship
Commercial (bulk goods)	Agricultural supplies store, Bulk landscape supplies, Garden centre, Hardware and trade supplies, Outdoor sales, Showroom
Commercial (retail)	Adult store, Food and drink outlet, Bar, Service industry, Service station, Shop, Shopping centre
Commercial (office)	Office, Sales office
Education facility	Childcare centre, Community care centre, Educational establishment
Entertainment	Hotel (non-residential component), Nightclub entertainment facility, Resort complex, Theatre
Indoor sport and recreational facility	Indoor sport and recreation (sports centre, gymnasium, snooker and pool centre, athletics)
Other Industry	Low impact industry, Medium impact industry, Research and technology industry, Rural Industry, Warehouse, Marine Industry, Transport Depot
High impact industry or special industry	High impact industry, Special industry
Essential services	Correctional facility, Emergency services, Health care services, Hospital, Residential care facility, Veterinary services
Other uses	Air service, Animal keeping, Parking station, Crematorium, Extractive industry, Motor sport facility, Non-resident workforce accommodation, Outdoor sport and recreation, Port service, Tourist attraction, Utility Installation, Brothel, Car wash, Environment Facility, Major electricity infrastructure, Nature-based tourism, outstation, substation, Major sport, recreation, and entertainment facility
Minor uses	Advertising device, Cemetery, Home-based business, Landing, Market, Outdoor lighting, Park, Roadside stall, Telecommunications facility, Temporary use

2.2 Development charge rates for reconfiguring a lot or material change of use

The following types of charges (the sum of which equal the development charge) apply to development in the PDA:

1. Infrastructure charges

Infrastructure charges are payable for the following development:

- a. Reconfiguring a lot - The infrastructure charge rates for reconfiguring a lot are set out in Table 2.
- b. Material change of use - The infrastructure charge rates for a material change of use are set out in Table 3.

Table 2: Infrastructure charge rates for reconfiguring a lot

Demand unit	Infrastructure charge rates (per lot created)
Lot	\$29,998.45

Table 3: Infrastructure charge rates for material change of use

Residential use	Demand unit	Infrastructure charge rates (\$ per demand unit)
Residential charge category		
Dwelling house	1 or 2 bedroom dwelling	21,427.49
	3 or more bedroom dwelling	29,998.45
Dual occupancy	1 or 2 bedroom dwelling	21,427.49
	3 or more bedroom dwelling	29,998.45
Caretaker's accommodation	1 or 2 bedroom dwelling	21,427.49
	3 or more bedroom dwelling	29,998.45
Multiple dwelling	1 or 2 bedroom dwelling	21,427.49
	3 or more bedroom dwelling	29,998.45
Dwelling unit	1 or 2 bedroom dwelling	21,427.49
	3 or more bedroom dwelling	29,998.45
Accommodation (short-term) charge category		
Hotel (residential component)	Suite with 1 or 2 bedrooms	10,713.72
	Suite with 3 or more bedrooms	14,999.23
	Bedroom that is not part of a suite	10,713.72
Short-term accommodation	Suite with 1 or 2 bedrooms	10,713.72
	Suite with 3 or more bedrooms	14,999.23
	Bedroom that is not part of a suite	10,713.72
Community residence	Suite with 1 or 2 bedrooms	21,427.49
	Suite with 3 or more bedrooms	29,998.45
	Bedroom that is not part of a suite	21,427.49
Hostel	Suite with 1 or 2 bedrooms	21,427.49
	Suite with 3 or more bedrooms	29,998.45
	Bedroom that is not part of a suite	21,427.49

Residential use	Demand unit	Infrastructure charge rates (\$ per demand unit)
Accommodation (short-term) charge category		
Retirement facility	Suite with 1 or 2 bedrooms	21,427.49
	Suite with 3 or more bedrooms	29,998.45
	Bedroom that is not part of a suite	21,427.49
Rooming accommodation	Suite with 1 or 2 bedrooms	21,427.49
	Suite with 3 or more bedrooms	29,998.45
	Bedroom that is not part of a suite	21,427.49
Non-residential use	Infrastructure charge rates for trunk infrastructure networks other than stormwater (\$ per demand unit of m² of GFA)	Infrastructure charge rates for stormwater trunk infrastructure network (\$ per demand unit of m² of impervious area)
Places of assembly charge category		
Function facility	75.01	10.69
Club	75.01	10.69
Community use	75.01	10.69
Funeral parlour	75.01	10.69
Place of worship	75.01	10.69
Commercial (bulk goods) charge category		
Agricultural supplies store	149.96	10.69
Bulk landscape supplies	149.96	10.69
Garden centre	149.96	10.69
Hardware and trade supplies	149.96	10.69
Outdoor sales	149.96	10.69
Showroom	149.96	10.69
Commercial (retail) charge category		
Adult store	192.84	10.69
Food and drink outlet	192.84	10.69
Bar	192.84	10.69
Service industry	192.84	10.69
Service station	192.84	10.69
Shop	192.84	10.69
Shopping centre	192.84	10.69
Commercial (office) charge category		
Office	149.96	10.69
Sales office	149.96	10.69
Educational facility charge category		
Childcare centre	149.96	10.69
Community care centre	149.96	10.69
Educational establishment	149.96	10.69

Non-residential use	Infrastructure charge rates for trunk infrastructure networks other than stormwater (\$ per demand unit of m² of GFA)	Infrastructure charge rates for stormwater trunk infrastructure network (\$ per demand unit of m² of impervious area)
Entertainment charge category		
Hotel (non-residential component)	214.28	10.69
Nightclub entertainment facility	214.28	10.69
Theatre	214.28	10.69
Resort complex	214.28	10.69
Indoor sport and recreational facility charge category		
Indoor sport and recreation facility	214.28	10.69
	21.39 for court areas	10.69
Industry charge category		
Low impact industry	53.57	10.69
Medium impact industry	53.57	10.69
Research and technology industry	53.57	10.69
Warehouse	53.57	10.69
High impact industry	75.01	10.69
Special industry	75.01	10.69
Essential services charge category		
Emergency services	149.96	10.69
Health care services	149.96	10.69
Hospital	149.96	10.69
Residential care facility	149.96	10.69
Veterinary services	149.96	10.69
Minor uses charge category		
Uses in the minor uses charge category	The development charge rate is that which is applicable to the charge category that the MEDQ decides should apply for the use having regard to the use and the demand placed upon the trunk infrastructure networks by the use.	
Other uses charge category		
Uses in the other uses charge category	The development charge rate is that which is applicable to the charge category that the MEDQ decides should apply for the use having regard to the use and the demand placed upon the trunk infrastructure networks by the use.	

2.3 Calculating a development charge

A development charge is equal to the sum of the infrastructure charge and value uplift charge as applicable to the development, as follows:

$$DC = IC + VUC$$

Where:

DC = Development charge

IC = Infrastructure charge

VUC = Value Uplift Charge⁸

2.4 Calculating an infrastructure charge

An infrastructure charge will be calculated by:

1. multiplying the proposed development demand by the infrastructure charge rate in accordance with section 2.2; and then
2. subtracting from it the applicable credit calculated in accordance with section 2.5, as follows:

$$IC = (DD \times ICR) - C$$

Where:

IC is the infrastructure charge, which cannot be less than zero.

DD is the development demand represented by the demand unit (i.e. a number/quantity of lots, dwellings, GFA or impervious area).

ICR is the applicable infrastructure charge rate.

C is the value of any applicable credit, represented in dollars.

2.5 Credits for infrastructure charges

A credit may be applied to the calculation of an infrastructure charge.

A credit for an infrastructure charge is an amount which is the greater of the following:

1. the infrastructure charge for each existing lot, calculated using Table 2
2. if the premises are subject to an existing lawful use and is serviced by trunk infrastructure, the infrastructure charge for the existing lawful use calculated using Table 3, or
3. if the premises were subject to a previous lawful use and is serviced by trunk infrastructure, the infrastructure charge for the previous lawful use calculated using Table 3.

However, a credit is not available where:

- a. the existing lawful use or previous lawful use commenced since the declaration of the PDA as accepted development, and charges were not levied
- b. the existing lawful use or previous lawful use was an interim use approved by the MEDQ and charges were not levied.

An applicant seeking a credit must provide evidence of the existing lawful use, previous lawful use, creation of the lot or payment of charges for accepted development or an interim use.

The sum of the credits for the infrastructure charges cannot exceed the sum of the infrastructure charges for the approved development.

⁸ The Boggo Road Cross River Rail PDA DCOP does not apply a value uplift charge to development.

2.6 Development exempt from development charges

Development charges do not apply to development undertaken by the State, or another entity representing the State, for the following purposes:

1. education
2. emergency services, and
3. health care services.

2.7 Interim use charges

Where a PDA development approval includes a use, which is deemed to be an ‘interim use’, infrastructure charges will be applied in accordance with the following principles:

1. where the approval is for an interim use that has a duration of less than six years, charges will not be levied
2. where the approval is for an interim use that has a duration of more than six years, charges are applicable in accordance with section 2 of this document, and
3. where the approval is an extension of an interim use duration period and the total duration of the use is more than six years, charges are applicable in accordance with section 2 of this document.

2.8 Indexation of development charges

Development charges will be subject to indexation. Development charges are indexed on 1 July each year. Indexation rates are calculated in accordance with the following formula:

$$i = \left(1 + \left[\frac{x - y}{y}\right]\right)^{\left(\frac{1}{3}\right)} - 1$$

Where:

- i is the annual indexation rate.
- x is the PPI for March in the current calendar year.
- y is the PPI for the March which is three years prior to the March in the current calendar year.

2.9 Payment of development charges

A development charge is payable at the following time:

1. If the charge applies for development that is reconfiguring a lot, prior to the MEDQ approving the plan of subdivision.
2. If the charge applies for development that is a material change of use, prior to the earlier of the following:
 - a. endorsement of a building format plan
 - b. the certificate of classification or final inspection certificate being issued for a building or structure, or
 - c. commencement of use.

3 Infrastructure offsets and refunds

3.1 Application of an offset

This section applies where an applicant:

1. is required to provide a trunk infrastructure contribution in accordance with conditions of a PDA development approval issued under the ED Act⁹, and
2. requests the value of that trunk infrastructure contribution to be offset against infrastructure charges (a trunk infrastructure offset).

The maximum offset that may be claimed will be 70% of the value of the trunk infrastructure contribution, unless otherwise agreed by the MEDQ. This requirement is necessary to ensure that an appropriate level of development charges are received to fund the trunk infrastructure and external contributions included within Table 8.

3.2 Requesting a provisional trunk infrastructure offset

Once a PDA development approval is issued, or at a later time, (but prior to the provision of land or the commencement of works which constitute the trunk infrastructure contribution which is the subject of the offset request), an applicant may submit a request for a provisional trunk infrastructure offset to the MEDQ which must include the following:

1. the DCOP identification as per the schedule of works in section 4.1
2. a detailed scope of works
3. a plan showing the spatial extent of the infrastructure contribution
4. preliminary engineering or landscape plans for the infrastructure contribution
5. a statement as to when the infrastructure contribution is required to be provided, and
6. a cost estimate for the infrastructure contribution which:
 - a. for a works contribution, is to be determined in accordance with the parameters in section 3.3
 - b. for a land contribution, is to be determined in accordance with the parameters in section 3.4

The MEDQ may require the applicant to provide any further information that will assist in deciding a request for an infrastructure offset. The applicant must comply with any request for further information from the MEDQ.

⁹ See section 94 of the ED Act.

3.3 Works contribution – cost estimate

To determine a cost estimate for a works contribution, an applicant must provide:

1. for a works contribution which has a value of more than \$500,000, evidence that a competitive tender process was conducted with a minimum of three tenders¹⁰, or
2. a bill of quantities and estimated overall value of the contribution certified by a Registered Professional Engineer of Queensland (RPEQ) or suitably qualified and experienced estimator based on the scope and preliminary engineering plans.

The value of a works contribution may include the following:

- a. the construction cost for the work
- b. construction on-costs for the work which do not exceed a total of 13 per cent of the construction cost for the following:
 - i. survey for the work
 - ii. geotechnical investigations for the work
 - iii. detailed design for the work
 - iv. project management, procurement and contract administration
 - v. environmental investigations for the work, and
 - vi. portable long service leave payment for a construction contract for the work.
- c. risk and contingencies which do not exceed 10 per cent of the cost of that part of the work in a construction contract which is subject to a contingency.

However, the value of a works contribution may not include the cost of the following:

- i. master planning of the work
- ii. carrying out temporary infrastructure works unless it is an agreed part of the works contribution
- iii. carrying out other infrastructure works which is not part of the agreed works contribution
- iv. decommissioning, removal and rehabilitation of infrastructure identified in ii) and iii), unless it is an agreed part of the works
- v. part of the works contribution provided by another party
- vi. the cost of GST to the extent that GST is payable and an input tax credit can be claimed for the work
- vii. a cost attributable directly or indirectly to the failure of an applicant or a person engaged by the applicant to perform and fulfil a relevant approval for the work
- viii. a cost caused or contributed to by a negligent or wilful act or omission by the applicant or a person engaged by the applicant
- ix. a cost of carrying out non-trunk infrastructure works which is only made necessary by the development and does not contribute to the function of the trunk infrastructure item
- x. a cost of carrying out trunk infrastructure works which relates to another infrastructure network
- xi. the cost involved in a redesign, where that redesign is a result of failing by the applicant or a person engaged by the applicant
- xii. a cost of carrying out infrastructure works in excess of the standard of service for the network of development infrastructure in the infrastructure plan, and
- xiii. a cost of maintaining an infrastructure asset where required by a condition of approval.

¹⁰ A competitive tender process is not mandatory for the provisional offset assessment. However, for works which have a value of more than \$500,000, evidence that a competitive tender process was conducted with a minimum of three tenders will be required prior to a final offset being granted.

3.4 Land contribution – cost estimate

No land in private ownership has been identified as being required to deliver the trunk infrastructure necessary to support future development within the Boggo Road Cross River Rail PDA.

As such, a trunk infrastructure offset is not available for land within the PDA or required to deliver PDA-associated infrastructure that was owned by the Queensland Government on the date the PDA was declared (2 October 2020).

If it is identified that land that was privately owned on the date the PDA was declared is required for PDA trunk infrastructure, and a land value is required to provide an offset value for trunk infrastructure, the value is to be based on the Valuer-General's annual valuation rate (rate per m² basis) (in accordance with the *Land Valuation Act 2010*) that is current at the time the offset is granted.

3.5 Determining a request for a provisional trunk infrastructure offset

The MEDQ shall decide the request within 30 business days of receiving a request for a provisional trunk infrastructure offset or upon receiving the further information requested under section 3.2. In deciding the request, the MEDQ shall:

1. determine whether a trunk infrastructure offset will be given for the trunk infrastructure contribution against infrastructure charges
2. for a works contribution, the provisional works offset value will be 70%¹¹ of either the schedule cost (or its proportion) in the schedule of works in section 4.1, or 70% of the applicant's cost estimate pursuant to section 3.3, whichever is the lesser.
3. for a land contribution, determine the provisional land offset value to be offset against infrastructure charges with reference to the process outlined in section 3.4 based on the area of land to be contributed.

Having decided the request, the MEDQ must give a notice to the applicant stating the following:

- a. whether a provisional trunk infrastructure offset will be given for the infrastructure contribution
- b. if a provisional trunk infrastructure offset is to be given:
 - i. for a works contribution, the provisional works offset value, and
 - ii. for a land contribution, the provisional land offset value.

3.6 Timing of a final trunk infrastructure offset

An applicant may make an application to the MEDQ for a final trunk infrastructure offset for a trunk infrastructure contribution at the following times:

1. for a works contribution:
 - a. for a complete works contribution, when the works have been accepted as on-maintenance, or
 - b. for a partially complete works contribution, when the MEDQ has agreed to accept an uncompleted works bond for the contribution. However, an offset for a partially completed works contribution can only be for the value of the completed portion and not the uncompleted portion of the works.
2. for a land contribution, when the trunk infrastructure contribution has been provided in accordance with the relevant PDA development approval.

¹¹ See section 3.1

3.7 Application for a final trunk infrastructure offset

A final trunk infrastructure offset request must include the following:

1. a copy of the notice(s) issued by the MEDQ under section 3.5
2. evidence:
 - a. for a works contribution:
 - i. that the works have been accepted as on-maintenance, or
 - ii. that an uncompleted works bond has been accepted by the MEDQ, and
 - iii. of the actual cost of the works contribution, or part thereof which has been completed, certified by an RPEQ or suitably qualified and experienced quantity survey or/estimator (certified actual costs), and
 - iv. for a works contribution which has a value of more than \$500,000, evidence that a competitive tender process was conducted with a minimum of three tenders.
 - b. for a land contribution, that the land contribution has been provided in accordance with the relevant PDA development approval.

3.8 Deciding a final trunk infrastructure offset

Within 30 business days of receiving a complete request for a final trunk infrastructure offset under Section 3.7, the MEDQ shall issue a notice advising the applicant:

Where an applicant's request has been accepted:

1. for a works contribution:
 - a. the final works offset value, which will be equal to the lesser of the provisional works offset or the certified actual costs¹².
2. for a land contribution:
 - a. the final land offset value, which will be equal to the lesser of the provisional land value determined in accordance with section 3.4 or the actual land offset value determined by the MEDQ at the time of the application for a final trunk infrastructure offset, on the basis of the amount of land actually contributed in accordance with the PDA development approval

Where an applicant's request has not been accepted, the reasons for rejecting the applicant's request will be provided in writing.

3.9 Trunk infrastructure refunds

A refund (trunk infrastructure refund) may apply where a notice has been issued by the MEDQ stating the amount of an unused offset in accordance with section 3.8 and the stated amount (or part thereof) remains unused.

An applicant may submit a request to the MEDQ for a refund. The request must contain the following information for each trunk infrastructure contribution the subject of the proposed refund:

1. that the trunk infrastructure contribution has been lawfully completed
2. that the applicant seeks a refund of the unused trunk infrastructure offset, and
3. the value of the unused trunk infrastructure offset.

The MEDQ may require the applicant to provide any further information that will assist in deciding a request for a refund.

The applicant must comply with any request for further information from the MEDQ.

¹² The value of the final trunk infrastructure offset is the lesser of 70% of the provisional offset value (see section 3.5) or 70% of the certified actual cost as required by section 3.1.

3.10 Entitlement to a refund

Any refund is to accord with the following terms, unless otherwise agreed with the MEDQ:

1. the refund is not to exceed the value of the unused trunk infrastructure offset
2. the refund will only be made available when sufficient infrastructure charges have been collected by the MEDQ for the infrastructure item which is the subject of the trunk infrastructure refund, and
3. the trunk infrastructure refund may be made over a series of payments
4. an Infrastructure Agreement may be negotiated and entered into with the MEDQ if a refund is requested by an applicant.

3.11 Determining a request for a refund

The MEDQ shall decide within 30 business days of receiving a request for a trunk infrastructure refund or upon receiving the further information requested under section 3.9 and shall issue a notice advising the applicant:

1. whether a refund is available or not
2. if a trunk infrastructure refund is not available, the reason, and
3. if a trunk infrastructure refund is available, the value of the trunk infrastructure refund, including indexation and details of the timing for payment of the trunk infrastructure refund.

4 Trunk infrastructure plans

4.1 Schedules of works

The schedule of work¹³ outlines future trunk land and works which are required to service the projected development within the PDA.

Table 4: Schedule of future trunk infrastructure works – Water Supply

DCOP ID	Map no.	Infrastructure type	Infrastructure description	Estimated timing	Trunk establishment cost
BGO-WAT-01	2	Water Main	Annerley Rd Water Main Upgrade – 215m of DN250mm Water Main replacing existing DN150mm Water Main	2026-2031	\$1,306,160
BGO-WAT-02	2	Water Main	Railway Tce Water Main Upgrade – 112m of DN180mm Water Main replacing existing 100mm Water Main	2026-2031	\$513,840

Notes:

1 – All costs are expressed in current cost terms as at the base date (FY 2021/22).

2 – The Trunk establishment cost is the sum of the following: construction cost, construction on costs and construction contingency.

Table 5: Schedule of future trunk infrastructure works – Stormwater

DCOP ID	Map no.	Infrastructure type	Infrastructure description	Estimated timing	Trunk establishment cost
BGO-SW-04	N/A	Stormwater Harvesting	Stormwater harvesting and water balancing with wider catchment benefits	2027-2031	\$1,345,500

Notes:

1 – All costs are expressed in current cost terms as at the base date (FY 2021/22).

2 – The Trunk establishment cost is the sum of the following: construction cost, construction on costs and construction contingency.

Table 6: Schedule of future trunk infrastructure works – Transport (Active)

DCOP ID	Map no.	Infrastructure type	Infrastructure description	Estimated timing	Trunk establishment cost
BGO-AT-03	3	Separated Path	Peter Doherty Street separated path	2020-2025	\$218,206
BGO-AT-06a	3	Separated Path	Laundry Drive ultimate separated path improvements	2027-2031	\$179,624
BGO-AT-05a	3	Separated Path	Kent Street interim separated path improvements (Cycle Street)	2027-2031	\$110,331
BGO-AT-07b	3	Elevated Pedestrian Connection	Elevated pedestrian connection over Kent Street (extended option)	2027-2031	\$4,689,068

Notes:

1 – All costs are expressed in current cost terms as at the base date (FY 2021/22).

2 – The Trunk establishment cost is the sum of the following: construction cost, construction on costs and construction contingency.

¹³ The Schedule of Works may be updated from time to time as information regarding infrastructure upgrades which are required to service the PDA is reviewed and/or becomes available.

Table 7: Schedule of future trunk infrastructure works – Parks and community facilities

DCOP ID	Map no.	Infrastructure type	Infrastructure description	Estimated timing	Trunk establishment cost
BGO-PP-02 (A) / BGO-PP-02 (B)	4	Local Recreation Park	Embellishment of Outlook Park	2025-2026	\$1,092,487.50

Notes:

1 – All costs are expressed in current cost terms as at the base date (FY 2021/22).

2 – The Trunk establishment cost is the sum of the following: construction cost, construction on costs and construction contingency.

Table 8: Priority infrastructure/external contributions*

Infrastructure type	Infrastructure description	Trunk establishment cost/contribution
External Contributions	Contributions towards external infrastructure to be provided by other Infrastructure Authorities	TBC
Water	Annerley Rd Water Main Upgrade - 215m of DN250mm water main replacing existing DN150mm water main	TBC
Water	Railway Tce Water Main Upgrade - 112m of DN180mm water main replacing DN100mm water main	TBC
Transport (Active)	Peter Doherty Street separated path	TBC

Notes:

*Trunk Infrastructure/external contributions are as referred to in Section 3.1

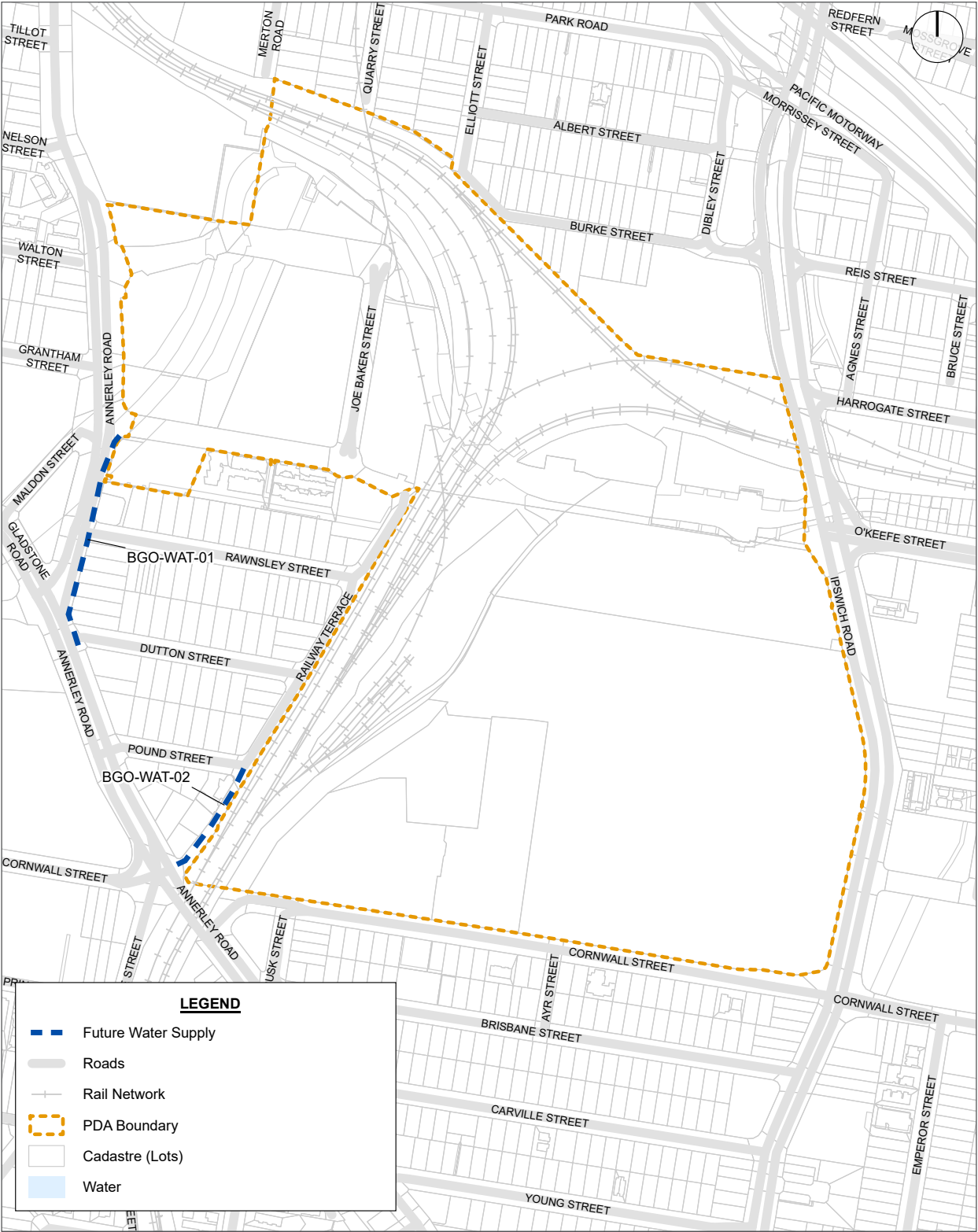
1 – The Trunk establishment cost is the sum of the following: construction cost, construction on costs and construction contingency

2 – TBC – To be confirmed

3 – All costs are expressed in current cost terms as at the base date (FY 2021/22).

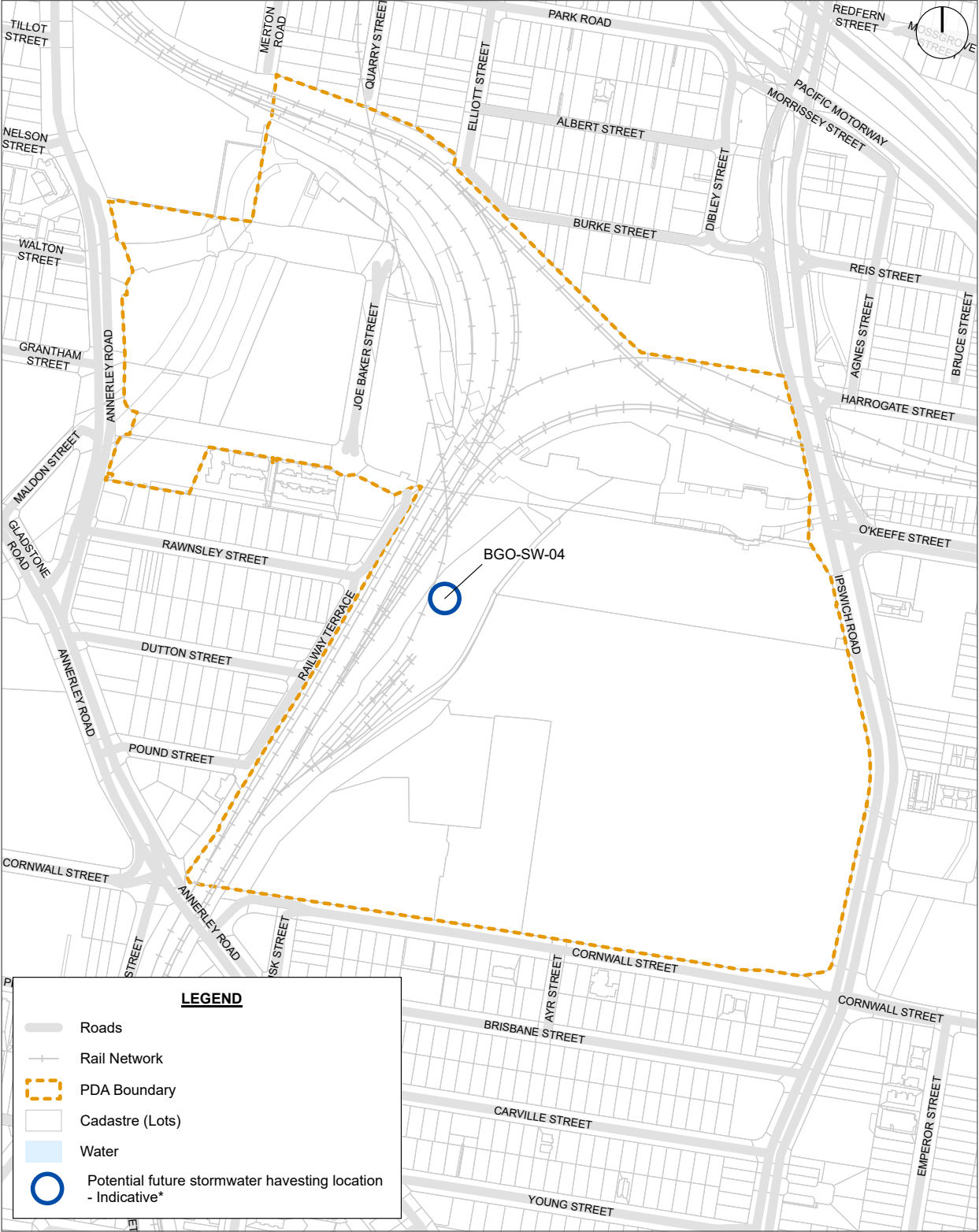
4.2 Trunk infrastructure maps

Map 1: Water supply future trunk infrastructure plan



This map is for illustration purposes and is not to scale.

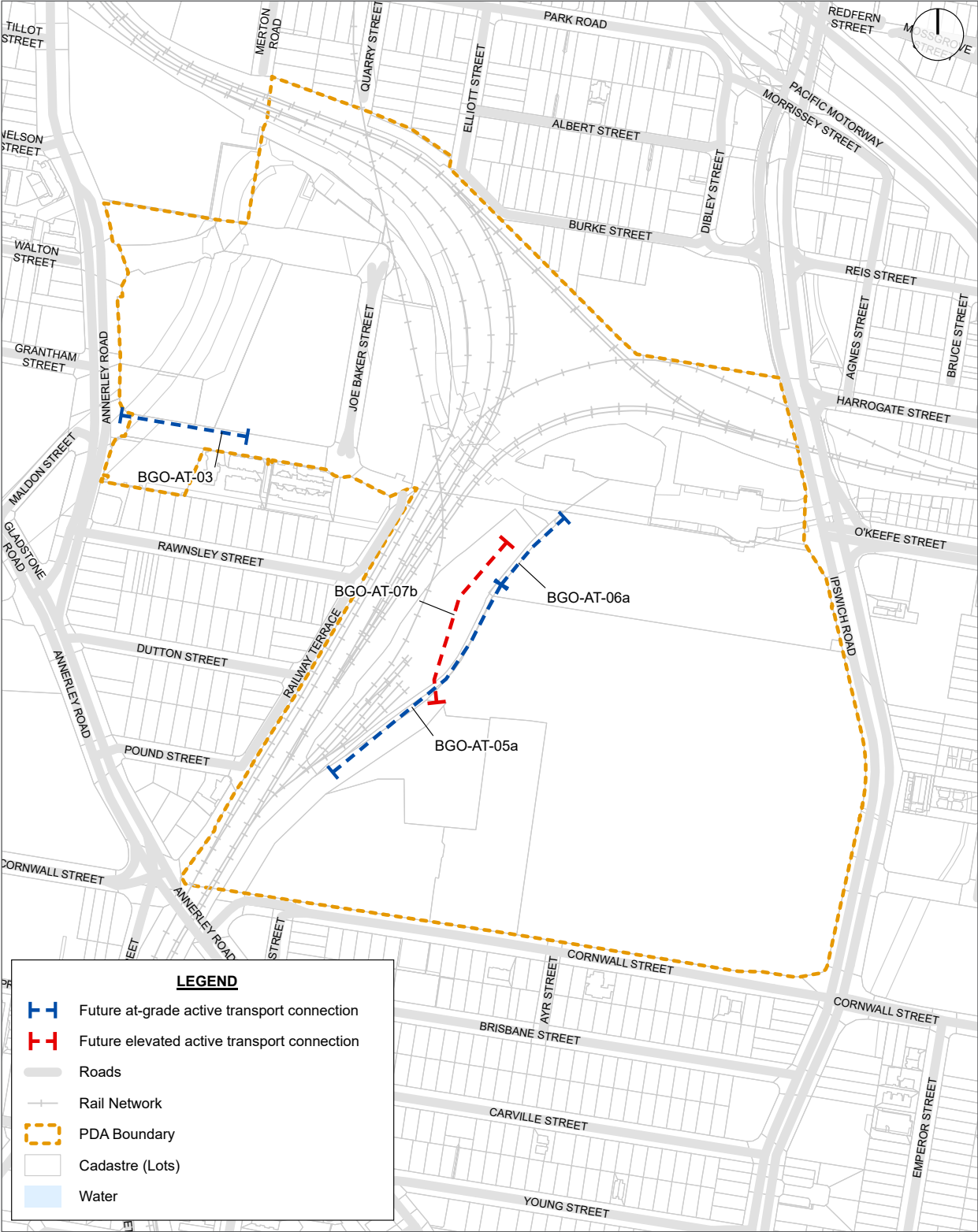
Map 2: Stormwater future trunk infrastructure plan



*Note: BGO-SW-04 represent indicative location for one(1) stormwater harvesting device to be provided.

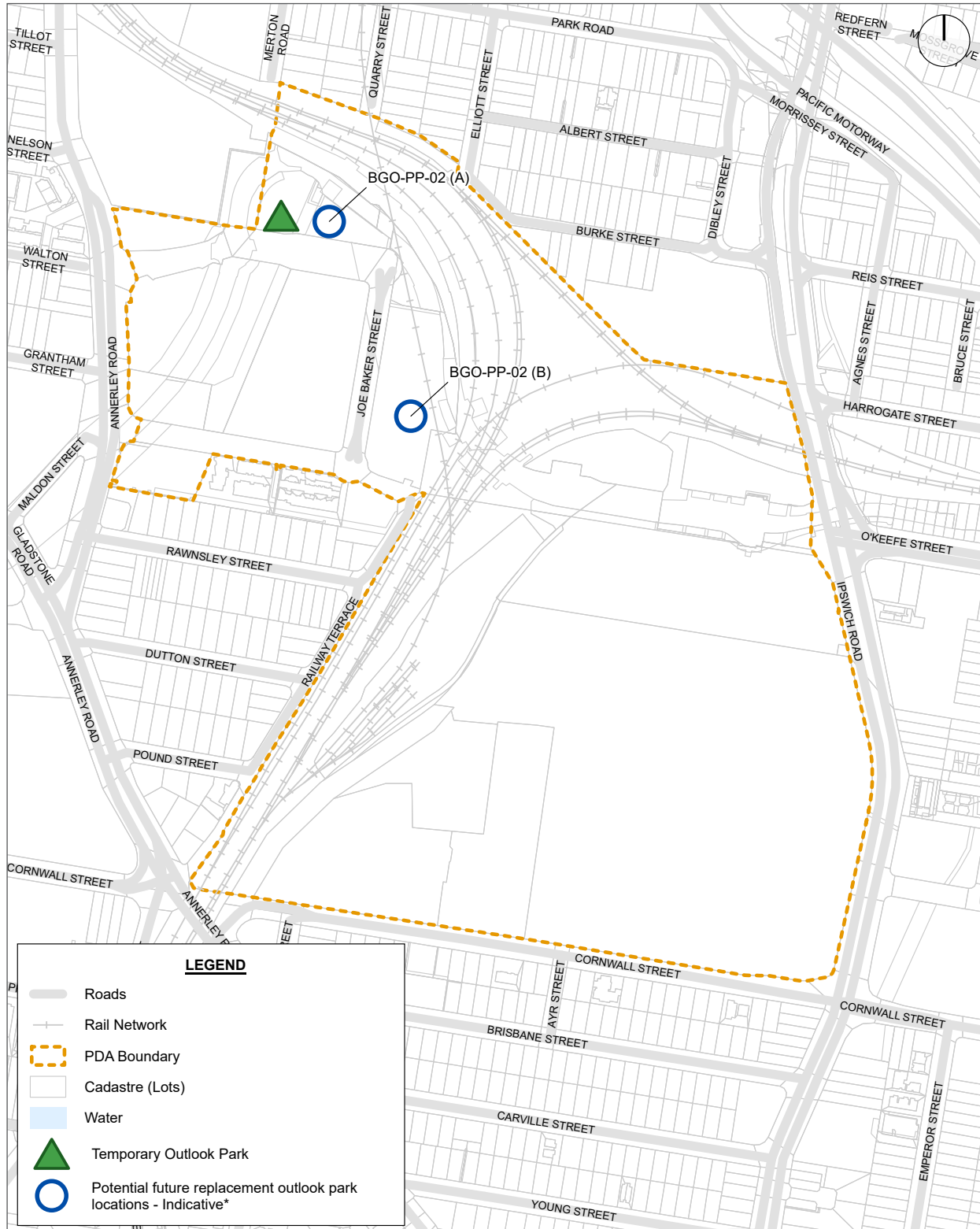
This map is for illustration purposes and is not to scale.

Map 3: Transport (Active) future trunk infrastructure plan



This map is for illustration purposes and is not to scale.

Map 4: Parks and community facilities future trunk infrastructure



*Note: BGO-PP-02 (A) and BGO-PP-02 (B) represent indicative location for one(1) replacement park to be provided. Section 2.6.1 Connectivity, access and public realm provision 10 of the draft proposed Boggo Road Development Scheme requires the first stage of development within the Outlook Park opportunity area to provide a new permanent Outlook Park.

This map is for illustration purposes and is not to scale.

5 Definitions

Unless otherwise expressly stated, a term used in this DCOP has the meaning given to it by:

1. Table 9 of this DCOP
2. if not defined in this DCOP, the ED Act
3. if not defined in the ED Act, the Boggo Road Cross River Rail PDA Development Scheme
4. if not defined in any of the above documents, the Planning Act 2016, or the *South East Queensland Water (Distribution and Retail Restructuring Act) 2009*.

Table 9: Defined terms

Column 1 Term	Column 2 Definition
Act	means the <i>Economic Development Act 2012</i> .
credit	means the monetary amount used in the calculation of an infrastructure charge, which is determined in accordance with section 2.5.
detailed scope of works	means a detailed estimated breakdown of elements, materials and quantities required to deliver the infrastructure e.g. drainage, earthworks, landscaping, pavements, relocation of services, retaining walls, signalling, structures.
development charge	means the monetary amount of the charge for development in the PDA or PDA-associated development calculated in accordance with section 2.
existing lawful use	means an existing use which is lawful and already taking place on premises.
land contribution	means a trunk infrastructure contribution that is land referred to in section 3.4.
final land offset value	means the offset value for a land contribution issued by notice from MEDQ to an applicant in accordance with section 3.8.
final works offset value	means the offset value for a works contribution stated in a notice from MEDQ to an applicant in accordance with section 3.8.
MEDQ	means the Minister for Economic Development Queensland as defined in the ED Act.
previous lawful use	means a previous use which was lawful at the time it was carried out and is no longer taking place on premises.
Producer Price Index or PPI	means the producer price index for construction 6427.0 (ABS PPI) index number 3101 – Road and Bridge construction index for Queensland published by the Australian Bureau of Statistics. If this index ceases to be published – another similar index.
provisional land offset value	means the offset value for a land contribution stated in a notice from MEDQ to an applicant in accordance with section 3.5.
provisional works offset value	means the estimated offset value for a works contribution stated in a notice from the MEDQ to an applicant in accordance with section 3.5.
trunk infrastructure	means infrastructure which the MEDQ has identified in section 4.
trunk infrastructure contribution	means land contribution or works contribution for trunk infrastructure which is required to be provided in accordance with the conditions of a PDA development approval.
trunk infrastructure offset	means an offset for a trunk infrastructure contribution referred to in section 3.
trunk infrastructure refund	means a refund for a trunk infrastructure contribution referred to in section 3.
works contribution	means a trunk infrastructure contribution which is works referred to in section 3.
works offset value	means the offset value for a works contribution determined by the MEDQ in accordance with the process in section 3.
Valuer-General's valuation	land valuations for all rateable properties provided by the Valuer-General in accordance with the <i>Land Valuation Act 2010</i> .

More information

Further information can be obtained from Cross River Rail Delivery Authority via:

- website: <http://www.crossrerrail.qld.gov.au/>
- email: info@crossrerrail.qld.gov.au

Further information can be obtained from EDQ via:

- website: <http://www.edq.qld.gov.au/>
- email: edq@dsdmip.qld.gov.au

