

Image sourced from KINGFISHER CREATIVE, October 2007

Map reproduced with permission of UBD.
Copyright Universal Publishers Pty Ltd DG 01/06

© Cardno (Qld) Pty Ltd All Rights Reserved 2007.
Copyright in the whole and every part of this drawing belongs to Cardno (Qld) Pty Ltd and may not be used, sold, transferred, copied or reproduced in whole or in part in any manner or form or on any media, to any person other than by agreement with Cardno (Qld) Pty Ltd.

This document is produced by Cardno (Qld) Pty Ltd solely for the benefit of and use by the client in accordance with the terms of the retainer. Cardno (Qld) Pty Ltd does not and shall not assume any responsibility or liability whatsoever to any third party arising out of any use or reliance by third party on the content of this document.

Rev: Orig. Date: 26 October 2007

Northeast Business Park Pty Ltd

CAD FILE: I:\7800-40\ACAD\EIS\Figure 1 - Site Locality.dwg
XREF: Caboolture_mga94

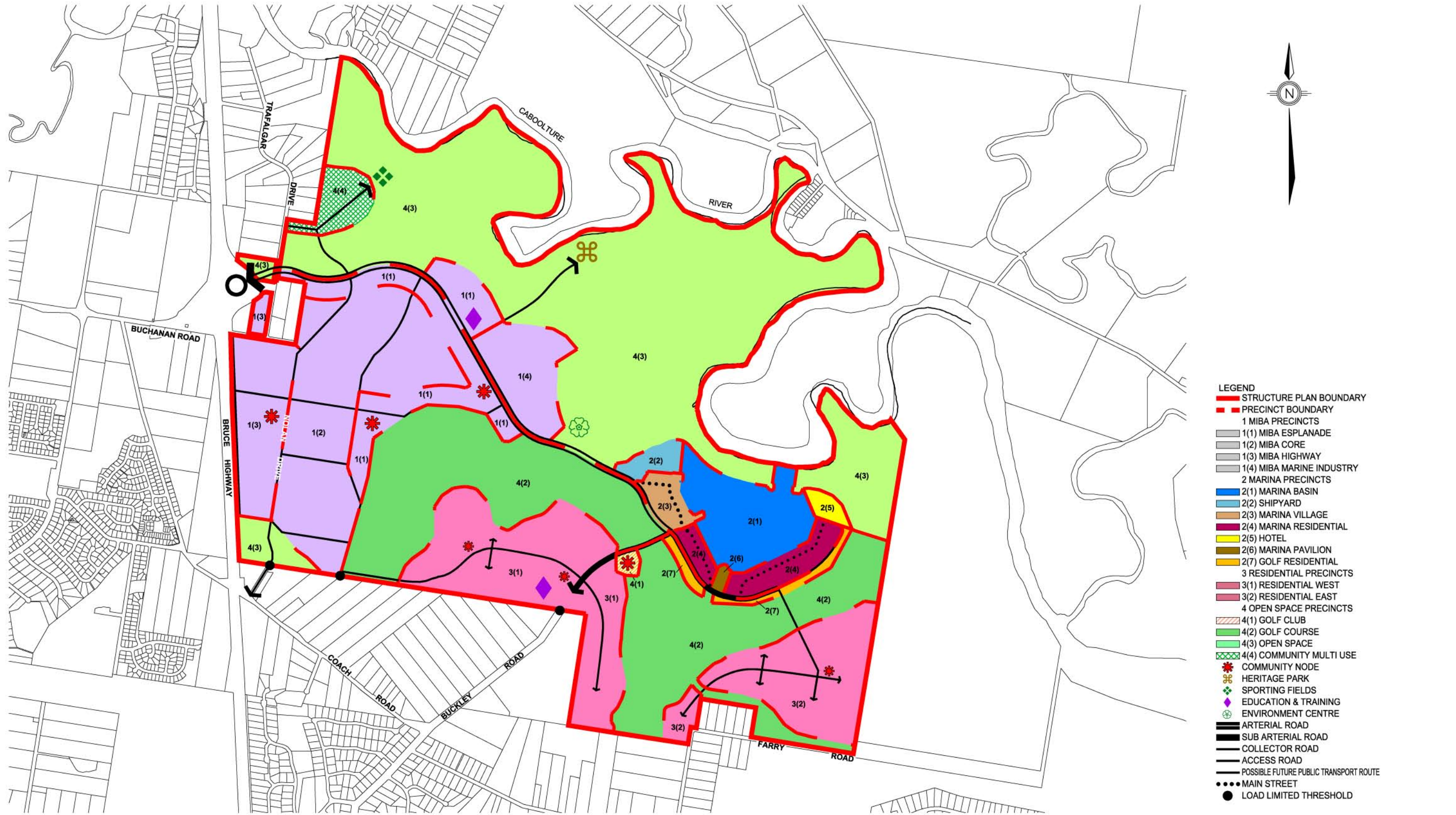


Not To Scale

FIGURE 1 SITE LOCALITY

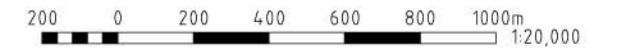
Project No.: 7800/40

PRINT DATE: 20 November, 2007 - 11:10am



- LEGEND**
- STRUCTURE PLAN BOUNDARY
 - PRECINCT BOUNDARY
 - 1 MIBA PRECINCTS
 - 1(1) MIBA ESPLANADE
 - 1(2) MIBA CORE
 - 1(3) MIBA HIGHWAY
 - 1(4) MIBA MARINE INDUSTRY
 - 2 MARINA PRECINCTS
 - 2(1) MARINA BASIN
 - 2(2) SHIPYARD
 - 2(3) MARINA VILLAGE
 - 2(4) MARINA RESIDENTIAL
 - 2(5) HOTEL
 - 2(6) MARINA PAVILION
 - 2(7) GOLF RESIDENTIAL
 - 3 RESIDENTIAL PRECINCTS
 - 3(1) RESIDENTIAL WEST
 - 3(2) RESIDENTIAL EAST
 - 4 OPEN SPACE PRECINCTS
 - 4(1) GOLF CLUB
 - 4(2) GOLF COURSE
 - 4(3) OPEN SPACE
 - 4(4) COMMUNITY MULTI USE
 - * COMMUNITY NODE
 - ⊕ HERITAGE PARK
 - ⊕ SPORTING FIELDS
 - ⊕ EDUCATION & TRAINING
 - ⊕ ENVIRONMENT CENTRE
 - ARTERIAL ROAD
 - SUB ARTERIAL ROAD
 - COLLECTOR ROAD
 - ACCESS ROAD
 - POSSIBLE FUTURE PUBLIC TRANSPORT ROUTE
 - MAIN STREET
 - LOAD LIMITED THRESHOLD

Plan sourced from PMM Brisbane Pty Ltd, Dwg name 20430STRUCTURE,
Plan Ref 20430-10G, 13 November 2007.



Scale 1:20,000 (A3)

FIGURE 2 STRUCTURE PLAN

© Cardno (Qld) Pty Ltd All Rights Reserved 2007.

This document is produced by Cardno (Qld) Pty Ltd solely for the benefit of and use by the client in accordance with the terms of the retainer. Cardno (Qld) Pty Ltd does not and shall not assume any responsibility or liability whatsoever to any third party arising out of any use or reliance by third party on the content of this document.

Rev: Orig. Date: 26 October 2007

Northeast Business Park Pty Ltd
CAD FILE: \\1888-40\ACAD\VEIS\Figure 2 - Structure Plan.dwg
XREF's: 20430Structure

Project No.: 7800/40

PRINT DATE: 19 November, 2007 - 4:26pm



Date of Aerial Photograph - July 2007

© Cardno (Qld) Pty Ltd All Rights Reserved 2007.
Copyright in the whole and every part of this drawing belongs to Cardno (Qld) Pty Ltd and may not be used, sold, transferred, copied or reproduced in whole or in part in any manner or form or on any media, to any person other than by agreement with Cardno (Qld) Pty Ltd.

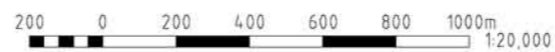
This document is produced by Cardno (Qld) Pty Ltd solely for the benefit of and use by the client in accordance with the terms of the retainer. Cardno (Qld) Pty Ltd does not and shall not assume any responsibility or liability whatsoever to any third party arising out of any use or reliance by third party on the content of this document.

Rev: Orig. Date: 26 October 2007

Northeast Business Park Pty Ltd
CAD FILE: I:\7800-40\ACAD\EIS\Figure 3 - Aerial Photograph of Site.dwg
XREF's:

LEGEND

 Site Boundary



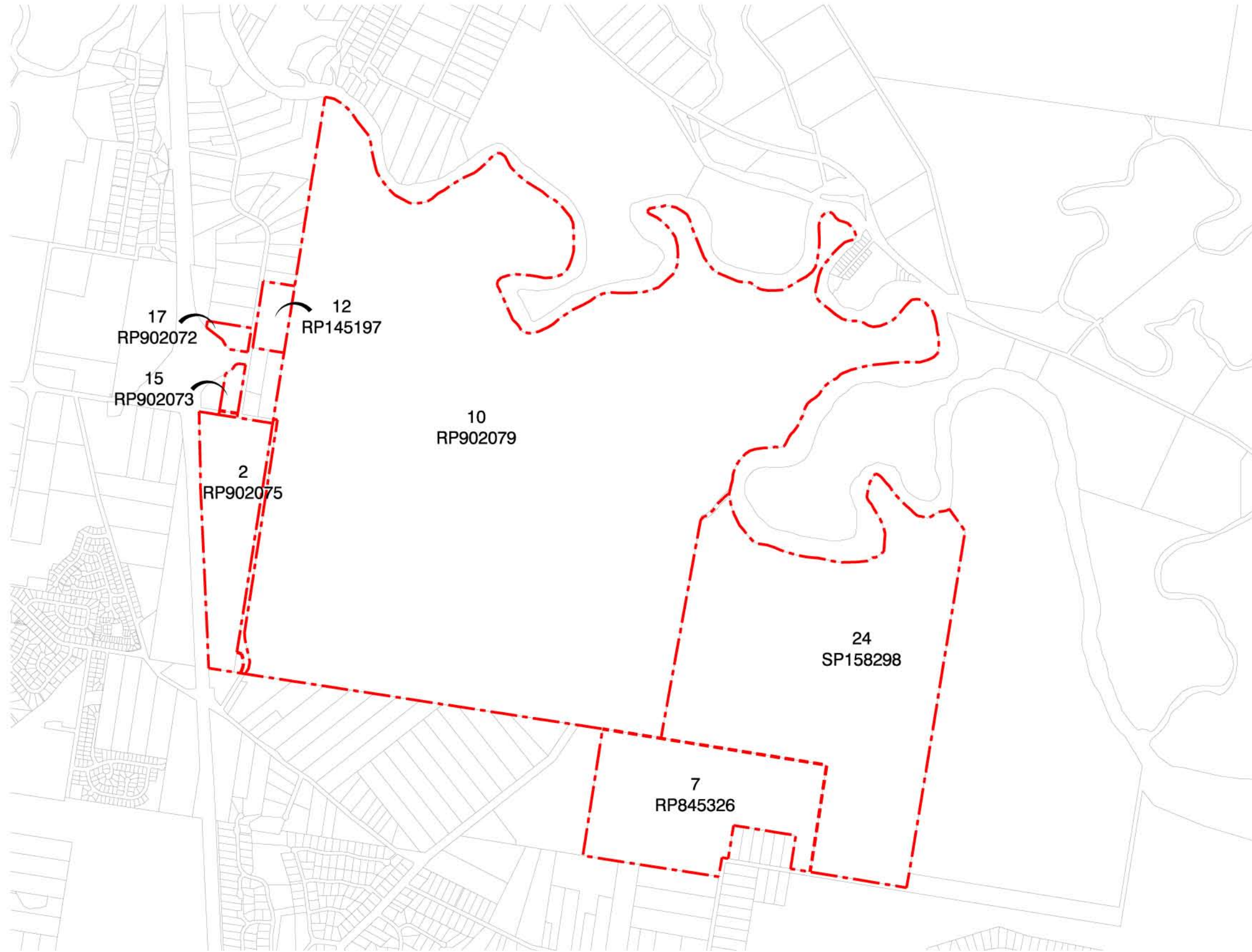
Scale 1:20,000 (A3)

FIGURE 3

2007 AERIAL PHOTOGRAPH OF THE EXISTING SITE

Project No.: 7800/40

PRINT DATE: 19 November, 2007 - 4:46pm



© Cardno (Qld) Pty Ltd All Rights Reserved 2007.
Copyright in the whole and every part of this drawing belongs to Cardno (Qld) Pty Ltd and may not be used, sold, transferred, copied or reproduced in whole or in part in any manner or form or on any media, to any person other than by agreement with Cardno (Qld) Pty Ltd.

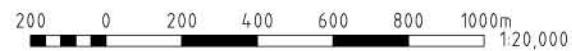
This document is produced by Cardno (Qld) Pty Ltd solely for the benefit of and use by the client in accordance with the terms of the retainer. Cardno (Qld) Pty Ltd does not and shall not assume any responsibility or liability whatsoever to any third party arising out of any use or reliance by third party on the content of this document.

Rev: Orig. Date: 26 October 2007

Northeast Business Park Pty Ltd
CAD FILE: \\17800-40\ACAD\VEIS\Figure 4 - Cadastral Boundaries.dwg
XREF: \s_Cad\Outline_mga94

LEGEND

Lots included within NEBP Area



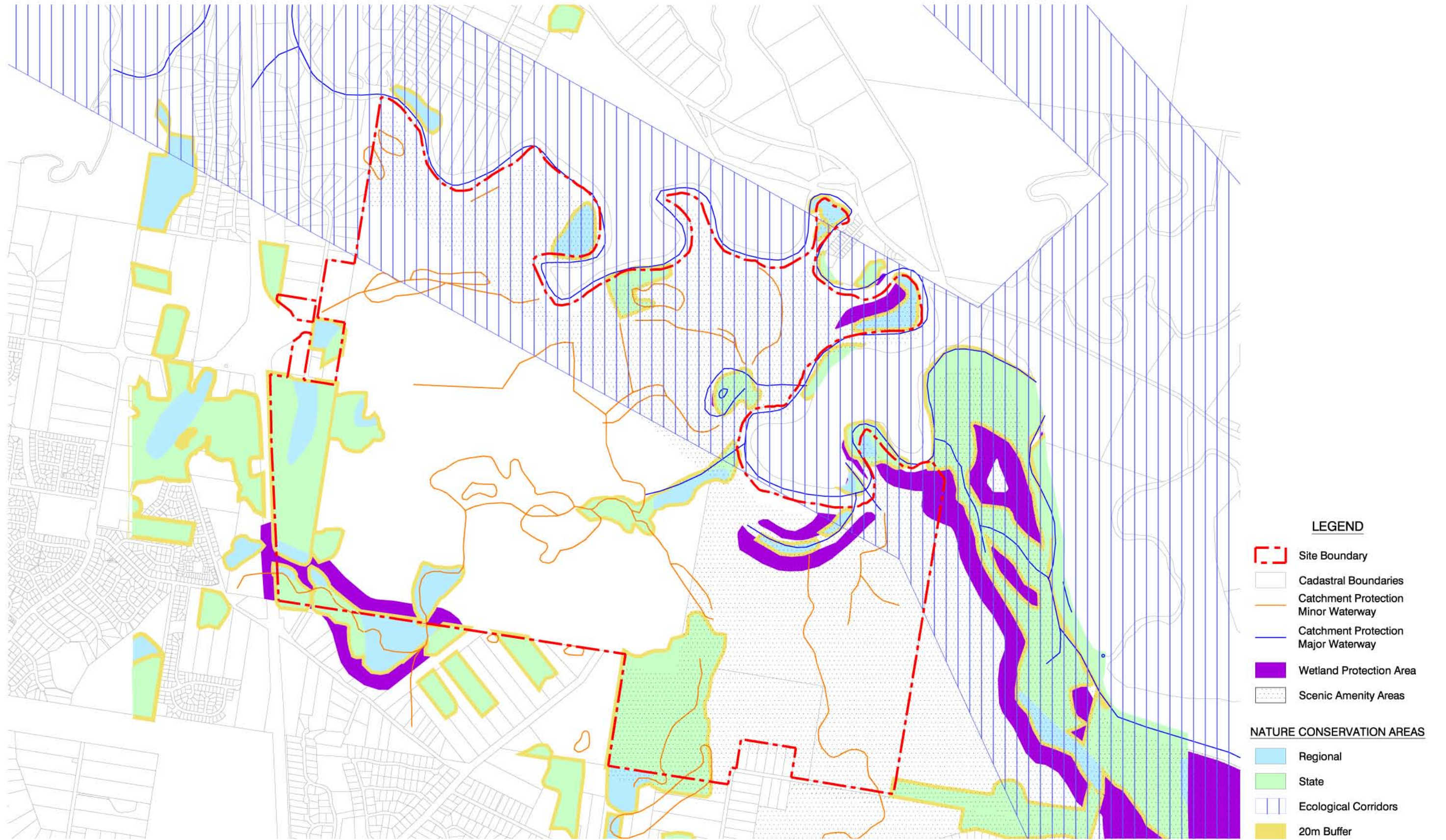
Scale 1:20,000 (A3)

FIGURE 4

CADASTRAL PLAN SHOWING LOT BOUNDARIES

Project No.: 7800/40

PRINT DATE: 22 January, 2008 - 14:5pm



Zoning Maps sourced from Caboolture Shire Council as per "Central Planning Area Zoning Map CZ-9; CZ-10; CZ-13; CZ-14" and "Eastern Planning Area Zoning Map EZ-15"; Effective December 2005

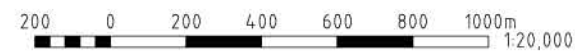
© Cardno (Qld) Pty Ltd All Rights Reserved 2007.
Copyright in the whole and every part of this drawing belongs to Cardno (Qld) Pty Ltd and may not be used, sold, transferred, copied or reproduced in whole or in part in any manner or form or on any media, to any person other than by agreement with Cardno (Qld) Pty Ltd.

This document is produced by Cardno (Qld) Pty Ltd solely for the benefit of and use by the client in accordance with the terms of the retainer. Cardno (Qld) Pty Ltd does not and shall not assume any responsibility or liability whatsoever to any third party arising out of any use or reliance by third party on the content of this document.

Rev: Orig. Date: 22 June 2007

North East Business Park Pty Ltd

CAD FILE: I:\7800-40\CAD\NEIS\Figure 6 - Caboolture Plan Overlay.dwg
XREF: Caboolture_mga94

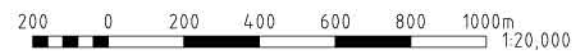
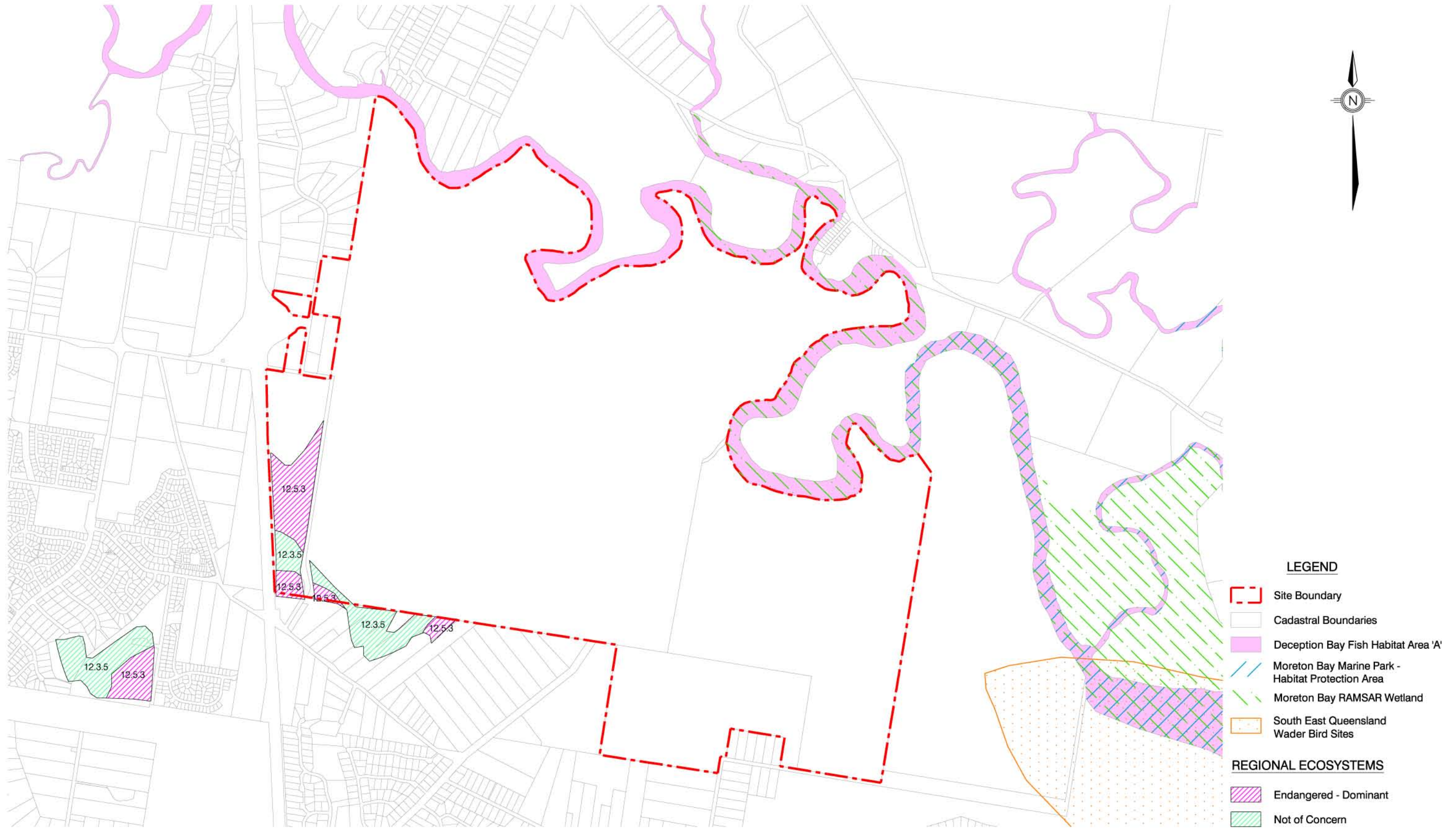


Scale 1:20,000 (A3)

FIGURE 6
CABOOLTURE PLAN OVERLAY

Project No.: 7800/40

PRINT DATE: 26 November, 2007 - 9:47am



Scale 1:20,000 (A3)
FIGURE 7
AREAS OF CONSERVATION SIGNIFICANCE

© Cardno (Qld) Pty Ltd All Rights Reserved 2007.
Copyright in the whole and every part of this drawing belongs to Cardno (Qld) Pty Ltd and may not be used, sold, transferred, copied or reproduced in whole or in part in any manner or form or on any media, to any person other than by agreement with Cardno (Qld) Pty Ltd.

This document is produced by Cardno (Qld) Pty Ltd solely for the benefit of and use by the client in accordance with the terms of the retainer. Cardno (Qld) Pty Ltd does not and shall not assume any responsibility or liability whatsoever to any third party arising out of any use or reliance by third party on the content of this document.

Rev: 2. Date: 11 September 2007

Northeast Business Park Pty Ltd
CAD FILE: \\17888-40\ACAD\VEIS\Figure 7 - Areas of Conservation Significance.dwg
XREF: %Caboolture_mga94_.redata

Map disclaimer: 2003 Regional Ecosystem Map, Date: 21.06.07. Regional ecosystem linework reproduced at scale greater than 1:100,000, except in designated areas, should be used as a guide only. The positional accuracy of RE data mapped at a scale of 1:100,000 is +/-100 metres. Regional ecosystem mapping reproduced with permission of Environmental Protection Agency 2007.

While every care is taken to ensure the accuracy of the information Product, the Environmental Protection Agency makes no representations or warranties about its accuracy, reliability, completeness or suitability for any particular purpose and disclaims all responsibility and all liability (including without limitation, liability in negligence) for all expenses, losses, damages (including indirect or consequential damage) and costs which you might incur as a result of the product being inaccurate or incomplete in any way and for any reason.

Project No.: 7800/40

PRINT DATE: 27 November, 2007 - 3:25pm



Date of Aerial Photograph - July 2007

© Cardno (Qld) Pty Ltd All Rights Reserved 2007.
Copyright in the whole and every part of this drawing belongs to Cardno (Qld) Pty Ltd and may not be used, sold, transferred, copied or reproduced in whole or in part in any manner or form or on any media, to any person other than by agreement with Cardno (Qld) Pty Ltd.

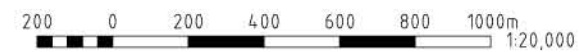
This document is produced by Cardno (Qld) Pty Ltd solely for the benefit of and use by the client in accordance with the terms of the retainer. Cardno (Qld) Pty Ltd does not and shall not assume any responsibility or liability whatsoever to any third party arising out of any use or reliance by third party on the content of this document.

Rev: Orig. Date: 22 November 2007

Northeast Business Park Pty Ltd
CAD FILE: \\17888-40\ACAD\VEIS\Figure 8 - Existing Site Contours.dwg
XREF's:

LEGEND

 Site Boundary



Scale 1:20,000 (A3)

**FIGURE 8
EXISTING SITE CONTOURS**

Project No.: 7800/40

PRINT DATE: 27 November, 2007 - 3:24pm



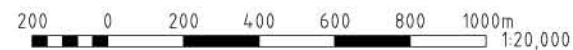
Date of Aerial Photograph - July 2007

© Cardno (Qld) Pty Ltd All Rights Reserved 2007.
Copyright in the whole and every part of this drawing belongs to Cardno (Qld) Pty Ltd and may not be used, sold, transferred, copied or reproduced in whole or in part in any manner or form or on any media, to any person other than by agreement with Cardno (Qld) Pty Ltd.

This document is produced by Cardno (Qld) Pty Ltd solely for the benefit of and use by the client in accordance with the terms of the retainer. Cardno (Qld) Pty Ltd does not and shall not assume any responsibility or liability whatsoever to any third party arising out of any use or reliance by third party on the content of this document.

Rev: Orig. Date: 26 October 2007

Northeast Business Park Pty Ltd
CAD FILE: \\17888-40\ACAD\VEIS\Figure 9 - Location of Potentially Contaminated Land.dwg
XREF's:



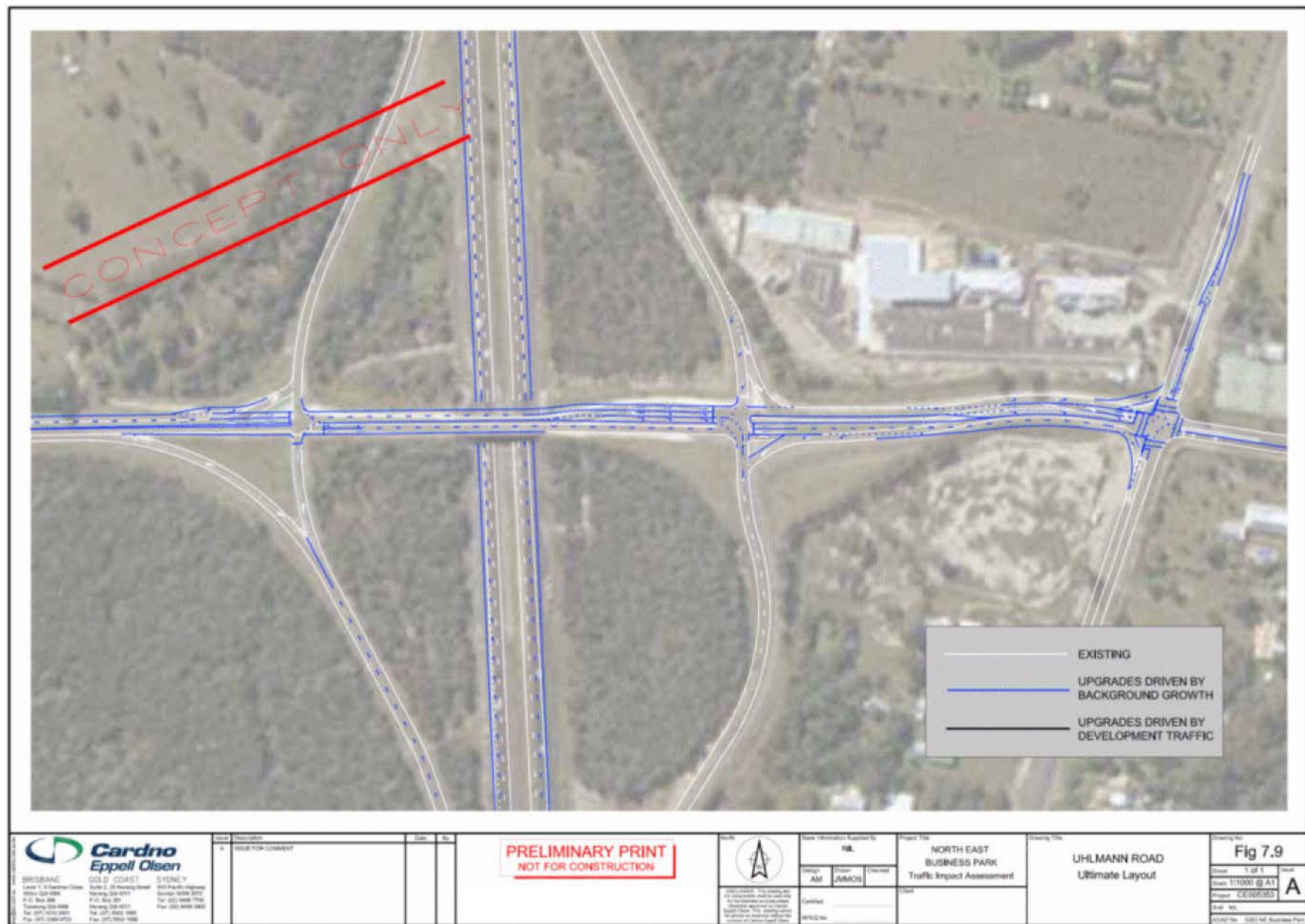
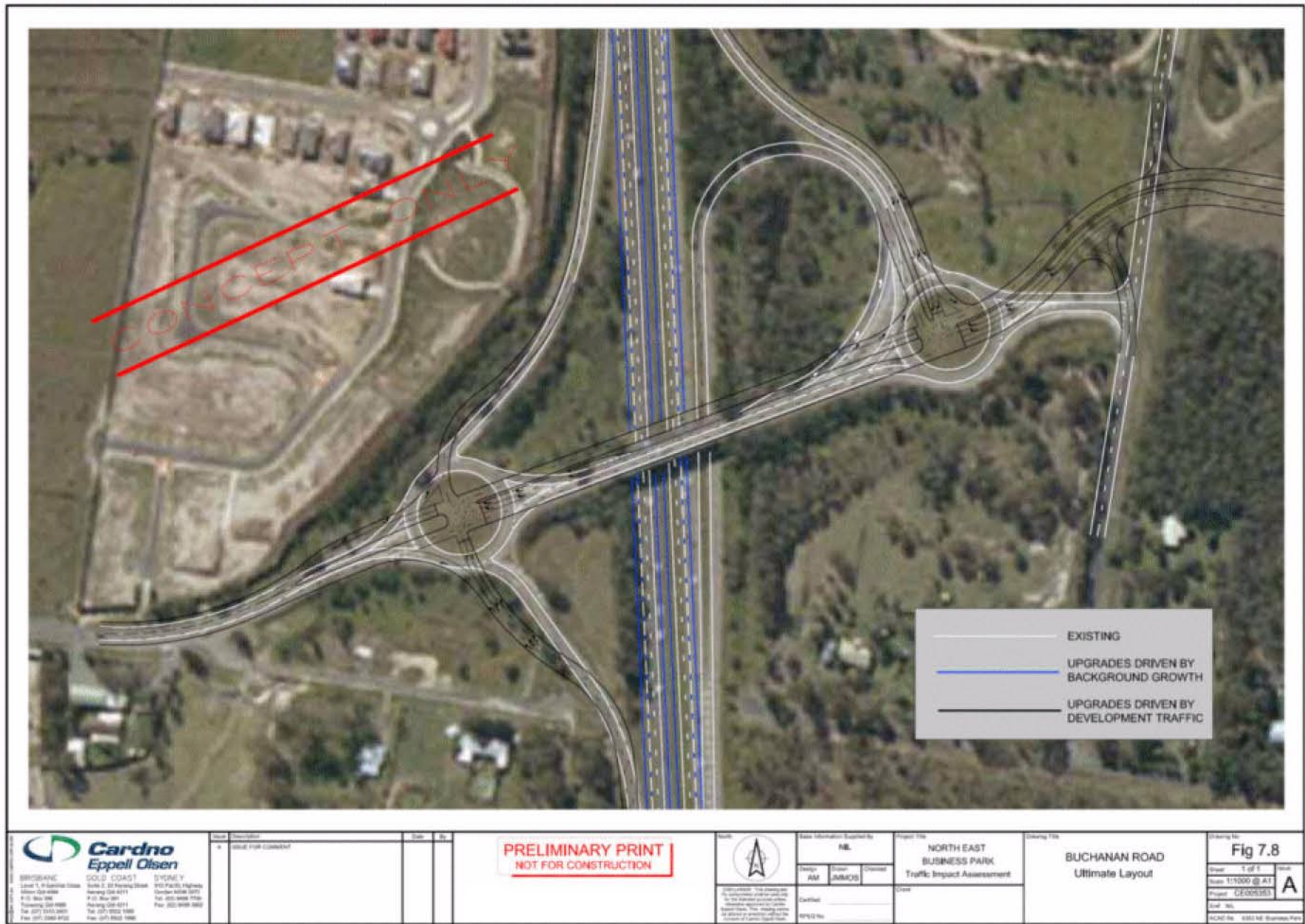
Scale 1:20,000 (A3)

FIGURE 9

LOCATION OF POTENTIALLY CONTAMINATED LAND

Project No.: 7800/40

PRINT DATE: 22 January, 2008 - 14:48pm



© Cardno (Qld) Pty Ltd All Rights Reserved 2007.
 Copyright in the whole and every part of this drawing belongs to Cardno (Qld) Pty Ltd and may not be used, sold, transferred, copied or reproduced in whole or in part in any manner or form on any media, to any person other than by agreement with Cardno (Qld) Pty Ltd.
 This document is produced by Cardno (Qld) Pty Ltd solely for the benefit of and use by the client in accordance with the terms of the retainer. Cardno (Qld) Pty Ltd does not and shall not assume any responsibility or liability whatsoever to any third party arising out of any use or reliance by third party on the content of this document.



- LEGEND**
- STRUCTURE PLAN BOUNDARY
 - PRECINCT BOUNDARY
 - 1 MIBA PRECINCTS
 - 1(1) MIBA ESPLANADE
 - 1(2) MIBA CORE
 - 1(3) MIBA HIGHWAY
 - 1(4) MIBA MARINE INDUSTRY
 - 2 MARINA PRECINCTS
 - 2(1) MARINA BASIN
 - 2(2) SHIPYARD
 - 2(3) MARINA VILLAGE
 - 2(4) MARINA RESIDENTIAL
 - 2(5) HOTEL
 - 2(6) MARINA PAVILION
 - 2(7) GOLF RESIDENTIAL
 - 3 RESIDENTIAL PRECINCTS
 - 3(1) RESIDENTIAL WEST
 - 3(2) RESIDENTIAL EAST
 - 4 OPEN SPACE PRECINCTS
 - 4(1) GOLF CLUB
 - 4(2) GOLF COURSE
 - 4(3) OPEN SPACE
 - 4(4) COMMUNITY MULTI USE
 - ★ COMMUNITY NODE
 - ⌘ HERITAGE PARK
 - ◆ SPORTING FIELDS
 - ◇ EDUCATION & TRAINING
 - ⊕ ENVIRONMENT CENTRE
 - ARTERIAL
 - SUB ARTERIAL
 - COLLECTOR
 - POSSIBLE FUTURE PUBLIC TRANSPORT ROUTE
 - LOAD LIMITED THRESHOLD
 - COASTAL MANAGEMENT DISTRICT BOUNDARY

Plan sourced from PMM Brisbane Pty Ltd, Dwg name 20430STRUCTURE,
Plan Ref 20430-10F, 25 September 2007.

200 0 200 400 600 800 1000m
1:20,000

Scale 1:20,000 (A3)

FIGURE 15 STRUCTURE PLAN AND COASTAL MANAGEMENT DISTRICT

© Cardno (Qld) Pty Ltd All Rights Reserved 2007.

This document is produced by Cardno (Qld) Pty Ltd solely for the benefit of and use by the client in accordance with the terms of the retainer. Cardno (Qld) Pty Ltd does not and shall not assume any responsibility or liability whatsoever to any third party arising out of any use or reliance by third party on the content of this document.

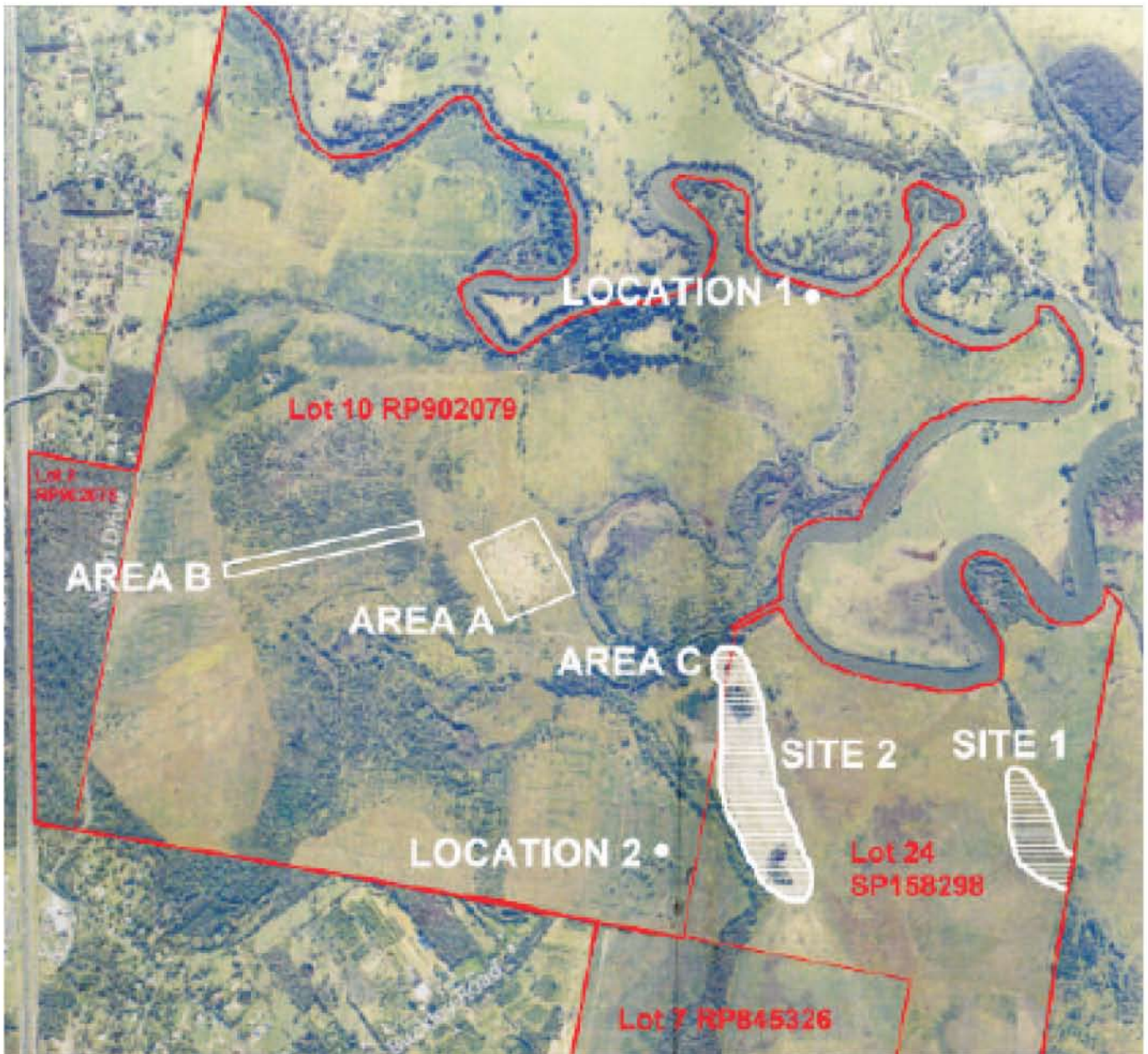
Rev: Orig. Date: 26 October 2007

Northeast Business Park Pty Ltd

CAD FILE: \\17888-40\ACAD\VEIS\Figure 15 - Structure Plan and Coastal Management District.dwg
XREF's:

Project No.: 7800/40

PRINT DATE: 20 November, 2007 - 10:50am



© Cardno (Qld) Pty Ltd All Rights Reserved 2006.
Copyright in the whole and every part of this drawing belongs to Cardno (Qld) Pty Ltd and may not be used, sold, transferred, copied or reproduced in whole or in part in any manner or form or on any media, to any person other than by agreement with Cardno (Qld) Pty Ltd.
This document is produced by Cardno (Qld) Pty Ltd solely for the benefit of and use by the client in accordance with the terms of the retainer. Cardno (Qld) Pty Ltd does not and shall not assume any responsibility or liability whatsoever to any third party arising out of any use or reliance by third party on the content of this document.

Rev: Orig. Date: 20 November 2007

Northeast Business Park Pty Ltd
CAD FILE: I:\7800-40\ACAD\VEIS\Figure 17 - Cultural Heritage Sites.dwg
XREF's:

FIGURE 17
CULTURAL HERITAGE SITES

Project No.: 7800/40

PRINT DATE: 20 November, 2007 - 4:57pm