

# CopperString 2032 Workers Accommodation Camps – Hughenden, Julia Creek and Richmond

## Project Report

May 2024

The Department of State Development and Infrastructure connects industries, businesses, communities and government (at all levels) to leverage regions' strengths to generate sustainable and enduring economic growth that supports well-planned, inclusive and resilient communities.

### Acknowledgement of Country

The department acknowledges the First Nations peoples in Queensland: Aboriginal and Torres Strait Islander peoples and their connections to the lands, winds and waters we now all share. We pay our respect to Elders, past, present and emerging. We also acknowledge the continuous living culture of First Nations Queenslanders – their diverse languages, customs and traditions, knowledges and systems. We acknowledge the deep relationship, connection and responsibility to land, sea, sky and Country as an integral element of First Nations identity and culture.

The Country is sacred. Everything on the land has meaning and all people are one with it. We acknowledge First Nations peoples' sacred connection as central to culture and being. We acknowledge the stories, traditions and living cultures of First Nations peoples and commit to shaping our state's future together. The department recognises the contribution of First Nations peoples and communities to the State of Queensland and how this continues to enrich our society more broadly.

### Copyright

This publication is protected by the *Copyright Act 1968*.

### Licence



This work, except as identified below, is licensed by the Department of State Development and Infrastructure under a Creative Commons Attribution-NonCommercial-No Derivative Works (CC BY-NC-ND) 4.0 Australia licence. To view a copy of this licence, visit: <http://creativecommons.org.au/>

You are free to copy, communicate and adapt this publication, as long as you attribute it as follows:

© Department of State Development and Infrastructure, May 2024.

Third party material that is not licensed under a Creative Commons licence is referenced within this document. All content not licensed under a Creative Commons licence is all rights reserved. Please contact the Department of State Development and Infrastructure, the copyright owner if you wish to use this material.

### Translating and interpreting service



The Queensland Government is committed to providing accessible services to Queenslanders of all cultural and linguistic backgrounds. If you have difficulty understanding this publication and need a translator, please call the Translating and Interpreting Service (TIS National) on 13 1450 and ask them to contact the Queensland Department of State Development and Infrastructure on 07 3328 4811.

### Disclaimer

While every care has been taken in preparing this publication, to the extent permitted by law, the State of Queensland accepts no responsibility and disclaims all liability (including without limitation, liability in negligence) for all expenses, losses (including direct and indirect loss), damages and costs incurred as a result of decisions or actions taken as a result of any data, information, statement or advice, expressed or implied, contained within. To the best of our knowledge, the content was correct at the time of publishing.

Any references to legislation are not an interpretation of the law. They are to be used as a guide only. The information in this publication is general and does not take into account individual circumstances or situations. Where appropriate, independent legal advice should be sought.

Copies of this publication are available on our website at [www.statedevelopment.qld.gov.au/cg](http://www.statedevelopment.qld.gov.au/cg) and further copies are available upon request.

### Contact us

Phone: 1800 001 048  
Email: [copperstring@coordinatorgeneral.qld.gov.au](mailto:copperstring@coordinatorgeneral.qld.gov.au)  
Web: [www.statedevelopment.qld.gov.au/cg](http://www.statedevelopment.qld.gov.au/cg)  
Post: PO Box 15517 City East Qld 4002  
Address: 1 William Street Brisbane QLD 4000 (Australia)

Source number D24/70444

# Contents

Purpose of this report .....iv

1. Background ..... 1

2. The Project ..... 3

2.1 The responsible entity .....3

2.2 Workers accommodation camps .....3

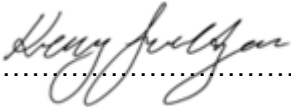
2.3 Facilitation Works .....3

# Appendices

- Appendix 1. Locality map of project
- Appendix 2. Workers accommodation camp locations

# Purpose of this report

This report supports amendments to the State Development and Public Works Organisation Regulation 2020 to facilitate construction of the CopperString 2032 Workers Accommodation Camps at Hughenden, Julia Creek and Richmond. The amendment regulation is provided for under ss. 99, 100, 108, 109 and 173 of the *State Development and Public Works Organisation Act 1971*.



.....  
Kerry Smeltzer  
Assistant Coordinator-General  
Project Evaluation and Facilitation  
(as delegate of the Coordinator-General)  
15 May 2024

# 1. Background

The CopperString 2032 project, formerly known as the CopperString Project and CopperString 2.0 (the project), is an approximately 1,000 km high-voltage electricity transmission line from south of Townsville to Mount Isa that will connect Queensland's North West Minerals Province (NWMP) to the national electricity grid. A project locality map is provided in Appendix 1.

The project was evaluated as a Coordinated Project under the *State Development and Public Works Organisation Act 1971* by the Coordinator-General via the Coordinator-General's evaluation report (CGER) released on 28 September 2022.

The \$5 billion project will form an essential part of the new Queensland SuperGrid transmission backbone to be delivered under the Queensland Energy and Jobs Plan.

The project also aligns with the Queensland Resources Industry Development Plan and Queensland Critical Minerals Strategy by helping unlock access to critical minerals in the NWMP. The project is vital to Queensland's transition to renewable energy products and low-emission power sources.

The project includes:

- 500 kilovolt (kV) transmission line from south of Townsville to Hughenden
- 330kV transmission line from Hughenden to Cloncurry
- 220kV transmission line from Cloncurry to Mount Isa
- up to six new substation sites
- ancillary infrastructure such as workers accommodation camps.

On 30 October 2023, the Queensland Government committed to commencing construction in mid-2024 with a \$1.3 billion package to progress work on the project. The project is expected to be completed in 2029.

The CGER recognised the proponent's proposal to proceed through an infrastructure designation process under the *Planning Act 2016*. The CGER assessed potential impacts and recommended conditions to be considered in any infrastructure designation application and determination. The recommended conditions apply to all components of the project, including the workers accommodation camps.

As the project has matured, it has become evident that the Hughenden, Julia Creek and Richmond camps need to be progressed ahead of any infrastructure designation process to deliver the Queensland Energy and Jobs Plan. A works regulation for these camps has been identified as the appropriate approval pathway to meet current project timeframes. The works regulation removes the requirement for development permits such as material change of use and operational works for earthworks under the local planning schemes.

Importantly, the works regulation does not impact:

- the assessment of matters of national environmental significance undertaken for the camps, which was approved under the *Environment Protection and Biodiversity Conservation Act 1999* in November 2022;
- the implementation of the existing commitments in the CGER;
- the requirement to comply with the Coordinator-General's imposed conditions regarding social matters;

- the requirement to comply with any conditions placed on the project under an infrastructure designation determination;
- the general environmental duty under the *Environment Protection Act 1994*;
- obtaining permits or approvals such as for water or sewage connections, or road or rail works under the *Transport Infrastructure Act 1994*;
- the requirement to obtain ownership or tenure for the camp; or
- the requirement to comply with any other laws.

## 2. The Project

### 2.1 The responsible entity

The project proponent is Queensland Electricity Transmission Corporation Limited. Queensland Electricity Transmission Corporation Limited is a government owned corporation established by regulation under the *Government Owned Corporations Act 1993*. Queensland Electricity Transmission Corporation Limited trades as Powerlink Queensland (Powerlink).

Powerlink became responsible for the project following the State's acquisition of the project in March 2023.

### 2.2 Workers accommodation camps

The construction of workers accommodation camps is required to accommodate workers undertaking works for the project. Camps proposed at Hughenden, Julia Creek and Richmond are critical to the project and it is expected construction will commence on the camps in mid-2024 and early 2025.

The scope of the project works is limited to the construction of the Hughenden, Julia Creek and Richmond camps for the CopperString 2032 project. The project works include the requirement to undertake construction in accordance with a construction environmental management plan (CEMP). The CEMP for each camp must include a CEMP certification by an appropriately qualified third party that it is generally consistent with Appendix 2, Part B, recommended condition 33 of the CGER and manages environmental and cultural matters in accordance with good environmental practice. The CEMP for each camp is to be submitted to the Coordinator-General prior to construction commencing for that camp and published on Powerlink's website.

The camps may include standard facilities to be constructed in accordance with industry best practice such as an accommodation camp for personnel working on the project, including a mess, commercial kitchen, laundry, recreation rooms, offices, meeting rooms, car park, concrete batching plant, materials storage area, vehicle refuelling facility, vehicle and equipment maintenance workshop and vehicle washdown bay.

Where possible, the camps will be connected to existing water supply, sewerage and electricity networks. Where this is not feasible, suitable water treatment systems, wastewater treatment plants, wastewater disposable irrigation fields and electrical generators will be established in consultation with local governments.

#### 2.2.1 Location

The Hughenden, Julia Creek and Richmond camps will be located within the Flinders Shire Council, McKinlay Shire Council and Richmond Shire Council local government areas, respectively.

A project locality map is provided in Appendix 1.

Workers accommodation camp locations are provided in Appendix 2.

### 2.3 Facilitation Works

The Coordinator-General has functions and powers to facilitate large-scale and complex projects, while ensuring their environmental and social impacts are properly managed.

Where required, the Coordinator-General will provide assistance to Powerlink through the use of functions and powers under the *State Development and Public Works Organisation Act 1971* (SDPWO Act) for the Hughenden, Julia Creek and Richmond camps.

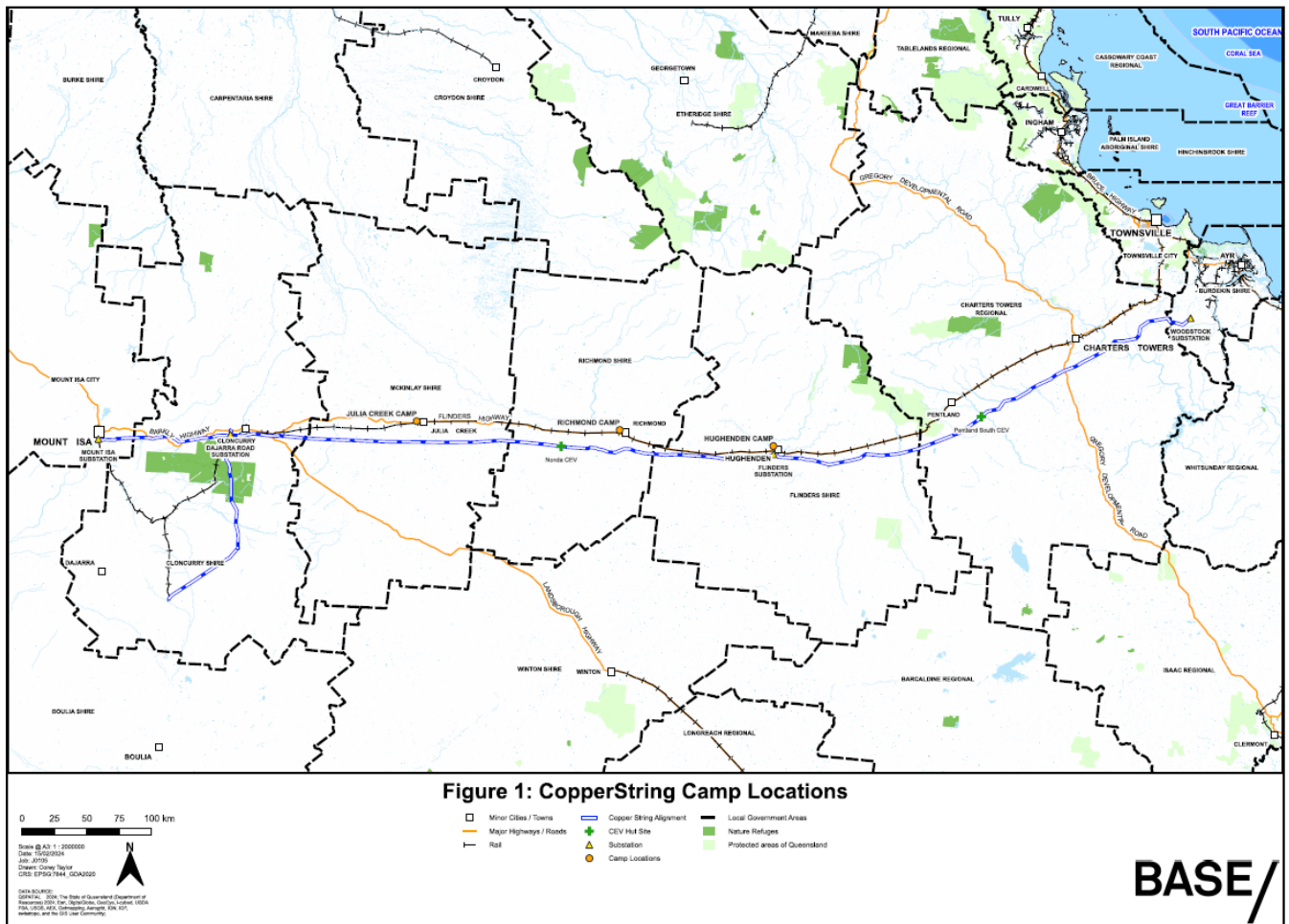
The scope of the facilitation works is limited to works reasonably connected with, or incidental to works to secure tenure for the CopperString 2032 workers accommodation camps; works reasonably required to secure access to land for the purpose of carrying out the project works, including for investigations and temporary works; and works comprising the opening, closing or rearranging of roads as reasonably required for carrying out the project works.



# Appendices

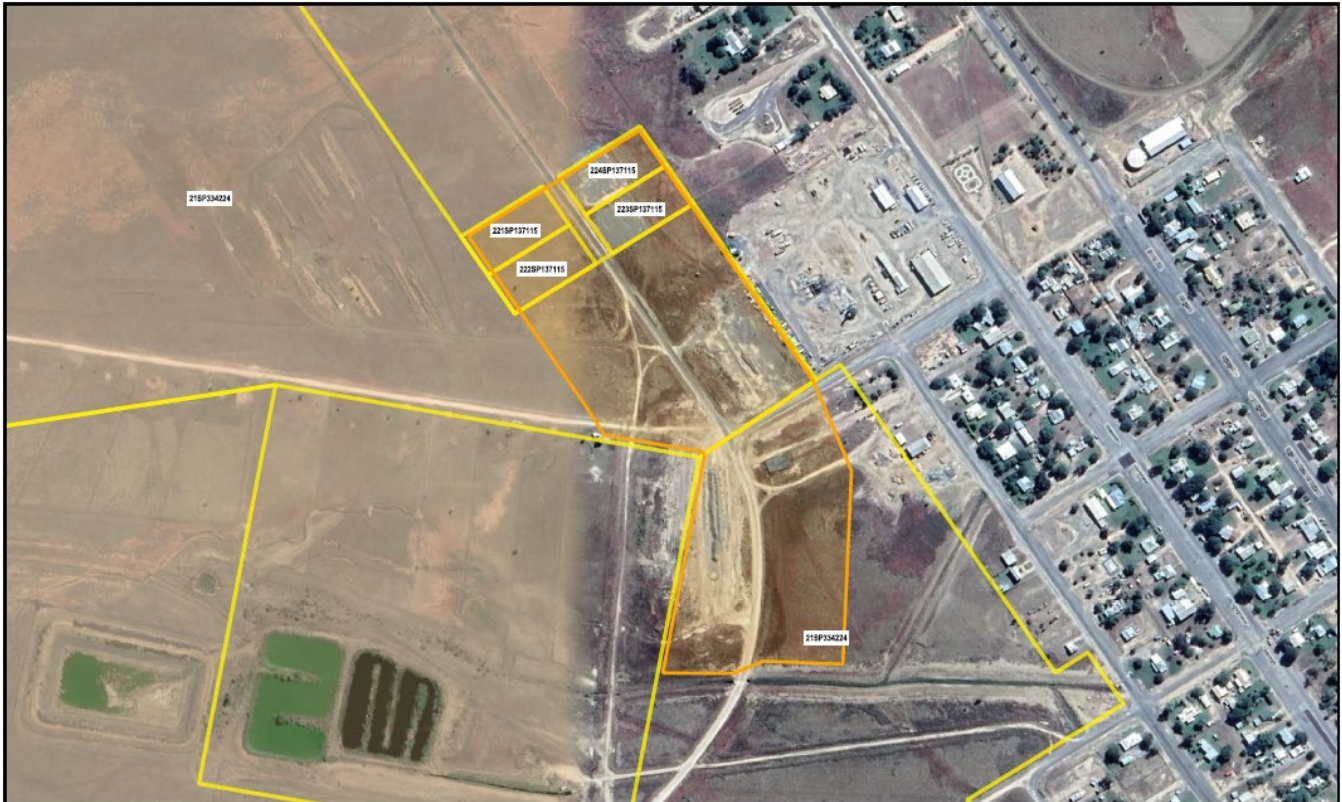
- Appendix 1. Locality map of project
- Appendix 2. Workers accommodation camp locations

# Appendix 1. Locality map of project









**Figure 2: Richmond Camp**

0 0.2 0.4 km

Camp  
 Lot Plan

Scale @ A3: 1:2995  
 Date: 22/04/2024  
 Job: 2105  
 Drawn: Jesse Campbell  
 CRS: EPSG:7844\_03A2020  
 DATA SOURCE:  
 GOPTAL, 2024, The State of Queensland  
 Department of Transport and Main Roads,  
 Department of Justice, Crime and  
 USGS, AEX, Orthophoto, 10m, RPT  
 metadata, and the 100 meter contouring.



**BASE/**

Project Path: C:\Users\jcampbell\OneDrive\BASIC Project Folder\Lot\Parcel\2105 CopperString Project (2105) CAD\Plan\2023 Project Plan\2105 CopperString Project (2105) Request for Proposal Change (Hughenden Camp) - Figure 2\2105CopperStringBASIC Project Folder\Lot\Parcel\2105 CopperString Project (2105) Request for Proposal Change (Hughenden Camp)\RPT\1-Hughenden Camp\workspace\Camp\2023\11022024\Figure2



Office of the Coordinator-General  
PO Box 15517 City East Qld 4002 Australia  
tel 13 QGOV (13 74 68)  
[copperstring@coordinatorgeneral.qld.gov.au](mailto:copperstring@coordinatorgeneral.qld.gov.au)  
[www.statedevelopment.qld.gov.au/cg](http://www.statedevelopment.qld.gov.au/cg)

