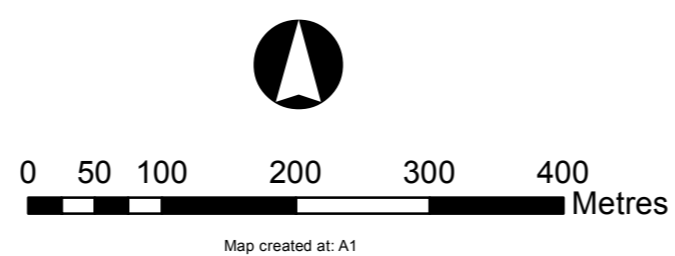


DRAFT

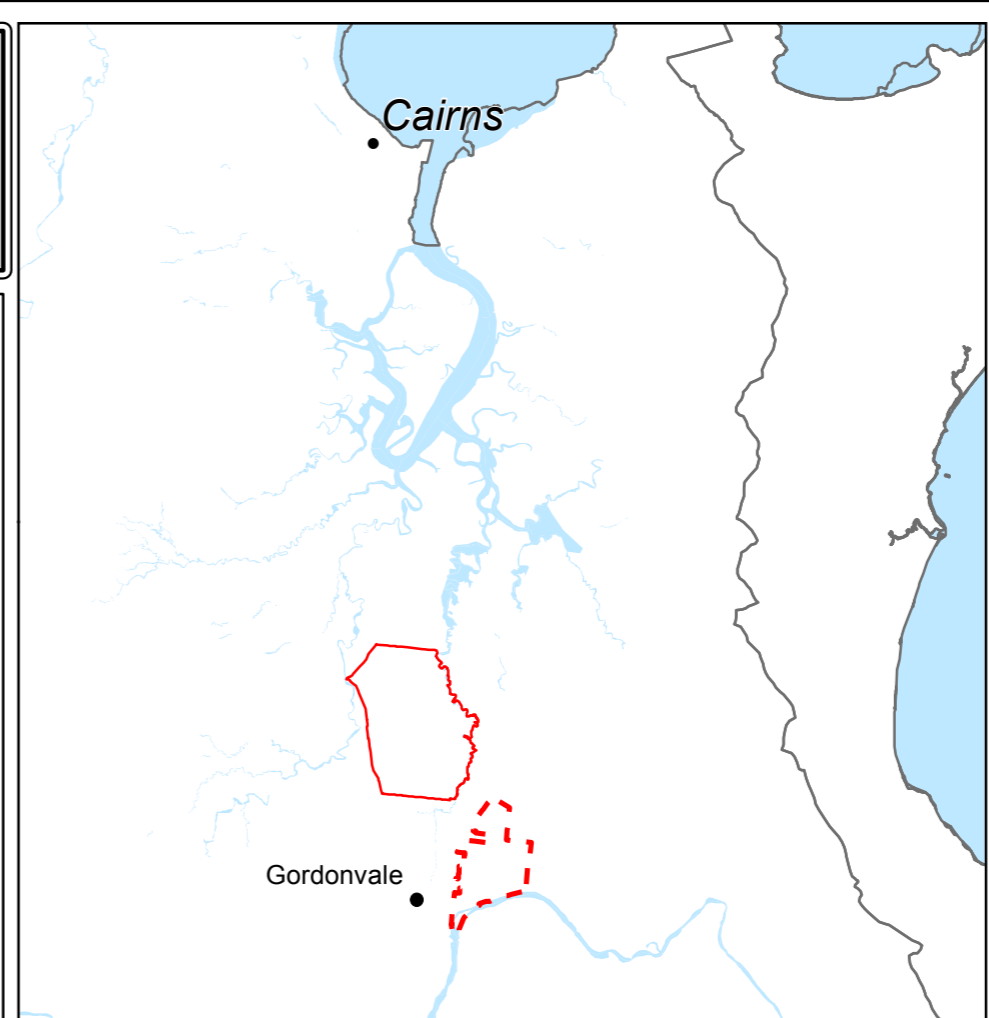
**Cairns South State Development Area
potential boundary variation – Development Precinct Map**

September 2019

- Legend**
- Potential variation area
 - Proposed Precincts**
 - Mulgrave Mill Industry
 - Transport and Support Services
 - Infrastructure Corridor
 - Rural Use
 - Environmental Management
 - Property boundary
 - Rivers and waterbodies
 - Road casements
 - Major roads
 - North Coast Line
 - Sugar Cane Rail
 - Localities



Map created at A1
Coordinate System: GDA 1984 MGA Zone 55



Note
© Copyright the State of Queensland (Department of State Development, Manufacturing, Infrastructure and Planning) 2019. To the extent permitted by law, The Department gives no warranty in relation to material or information contained in this data (including accuracy, reliability, completeness or suitability) and accepts no liability (including without limitation, liability in negligence) for any loss, damage or costs (including indirect or consequential damage) relating to any use of the material or information contained in the Data, and responsibility or liability for any loss or damage arising from its use.

Disclaimer
(i) The Coordinator-General accepts no responsibility for any loss or damage suffered however so arising to any person or corporation who may use or rely on this plan in contravention of the terms of this clause or clauses (i) & (ii).
(ii) The dimensions, areas, number of lots, size and location of corridor information are approximate only and may vary.

Source
The Coordinator-General
The Department of State Development, Manufacturing, Infrastructure and Planning
The Department of Natural Resources, Mines and Energy

Drawn By: Spatial Services Unit
Checked By:

Issued under Part 6 of the
State Development & Public Works Organisation Act 1971

