



IMPORTANT NOTE

1. This plan was prepared for the sole purpose of the client for the specific purpose of recording the information for Central Highlands Regional Council. It is not to be used for any other application, purpose, use or matter. This plan is provided without the assumption of a duty of care to any other person (other than the Client) ("Third Party") and may not be relied on by Third Party.
2. RPS Australia East Pty Ltd will not be liable (in negligence or otherwise) for any direct or indirect loss, damage, liability or claim arising out of or in connection with the use of this plan by Third Party.
3. RPS Australia East Pty Ltd relies on information provided to it by the Client or a Third Party where the information is incorrect, incomplete, inaccurate, out-of-date or unreliable.
4. RPS Australia East Pty Ltd relies on information or data sourced from a Third Party.
5. RPS Australia East Pty Ltd relies on information or data sourced from a Third Party.
6. RPS Australia East Pty Ltd relies on information or data sourced from a Third Party.
7. RPS Australia East Pty Ltd relies on information or data sourced from a Third Party.
8. RPS Australia East Pty Ltd relies on information or data sourced from a Third Party.
9. RPS Australia East Pty Ltd relies on information or data sourced from a Third Party.
10. RPS Australia East Pty Ltd relies on information or data sourced from a Third Party.

3. Without limiting paragraph 1 or 2 above, the plan may not be copied, distributed, or reproduced by any person unless the user is a duly authorised person.
4. Scale shown is correct for the original plan and any copies of this plan should be verified by checking against the bar scale.
5. The type of assembly shown has been obtained from information from surrounding property and there may be variations. All points are noted on the plan unless otherwise stated. Other information has been obtained from design and construction information provided by Third Parties and should be checked before use.

CERTIFICATION

RPS Australia East Pty Ltd (ACN 005 601 006) Registered Surveyor, certifies that the location, nature and extent of the information shown on this plan has been surveyed in accordance with the requirements of the Survey Act 1992 (Vic) and the Survey Regulations 2000 (Vic) and is true and correct to the best of our knowledge and belief to the nearest 1:1000.

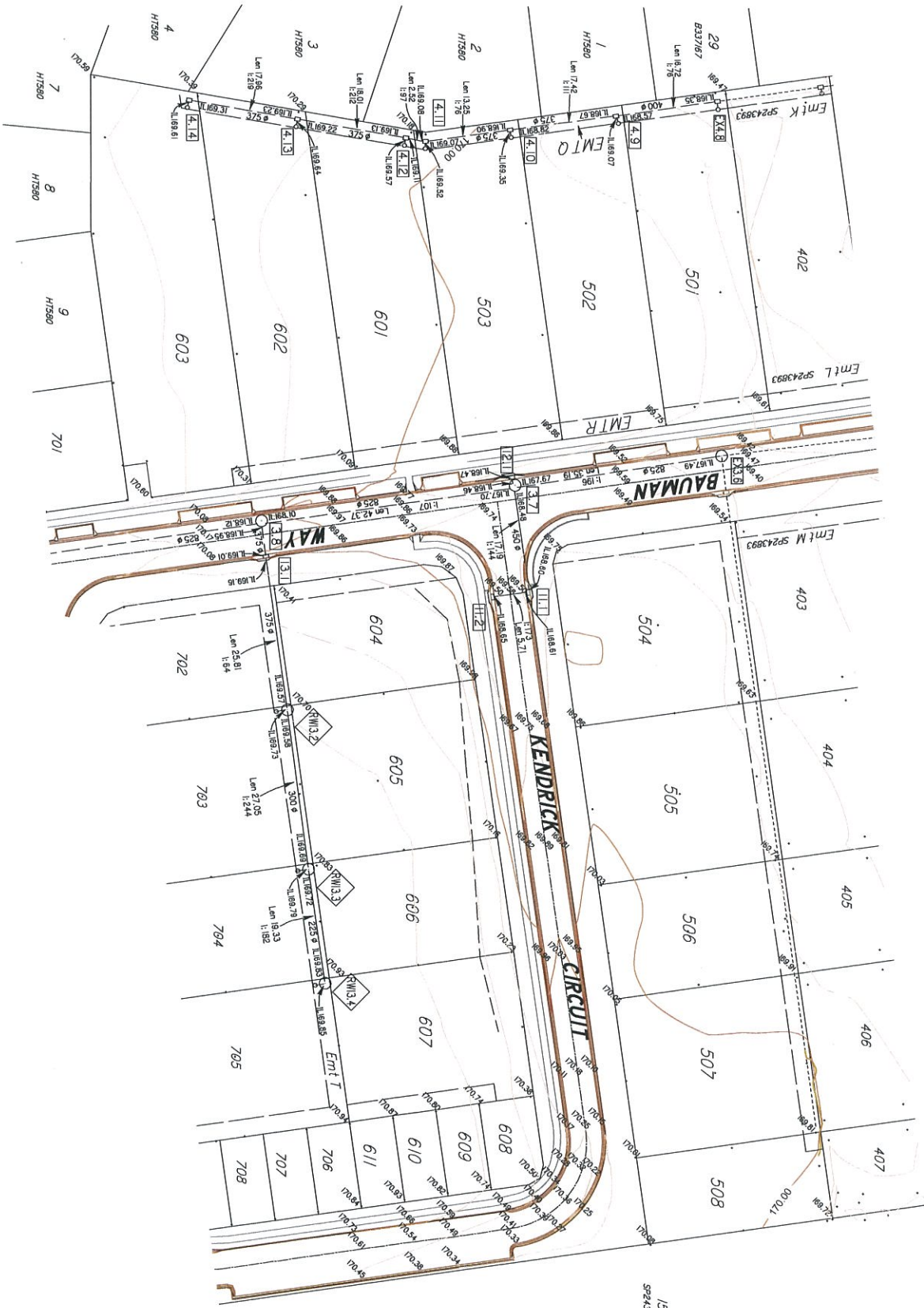
Noted and accurate

Authorised Signatory

1/11/13 Date

LEGEND

- **EM102** STORMWATER MANHOLE WITH NUMBER
- **EM102** STORMWATER PIT WITH NUMBER
- STORMWATER PIPE
- ROOFWATER PIPE
- KERB & CHANNEL, LEVEL AT LIP
- DESIGN CENTRELINE, LEVEL
- SURFACE LEVEL
- INDEX CONTOUR (1.0m), LABEL
- MINOR CONTOUR (0.2m)
- EXISTING STORMWATER PIPE



Scale 1:500 - Lengths are in Metres.

0 5 10 15 20 25 30 35 40 45

Client		JK CIVIL		Road AS-CONSTRUCTED STAGES 5 & 6		1112 Egeston Street PO Box 655 Emerald QLD 4720 T +61 7 4682 1631 F +61 7 4682 1941 W rpsgroup.com.au	
Project		BLUERIDGE ESTATE		SHEET 1 OF 1		113912-1-ASCON-ROADS-02	
Drawn		RLE		19-03-2013		PR113912-1	
Checked		RDG		20-03-2013		19-03-2013	
Design		RPS		FEB-2013		113912-1-ASCON-ROADS-02	
Survey		RPS		FEB-2013		113912-1-ASCON-ROADS-02	
Level Datum		AHD Dar		PLANE v/cide IS232597		113912-1-ASCON-ROADS-02	
Contract No.		2.0 major, 0.5 minor		113912-1-ASCON-ROADS-02		113912-1-ASCON-ROADS-02	
Country		Humboldt		Central Highlands Regional Council		113912-1-ASCON-ROADS-02	
Local Authority		Central Highlands Regional Council		113912-1-ASCON-ROADS-02		113912-1-ASCON-ROADS-02	
Date		20-03-2013		19-03-2013		113912-1-ASCON-ROADS-02	
Approved		RDG		19-03-2013		113912-1-ASCON-ROADS-02	
Revised		RDG		19-03-2013		113912-1-ASCON-ROADS-02	
Original Issue (DRAFT)		RDG		19-03-2013		113912-1-ASCON-ROADS-02	
Rev		RDG		19-03-2013		113912-1-ASCON-ROADS-02	