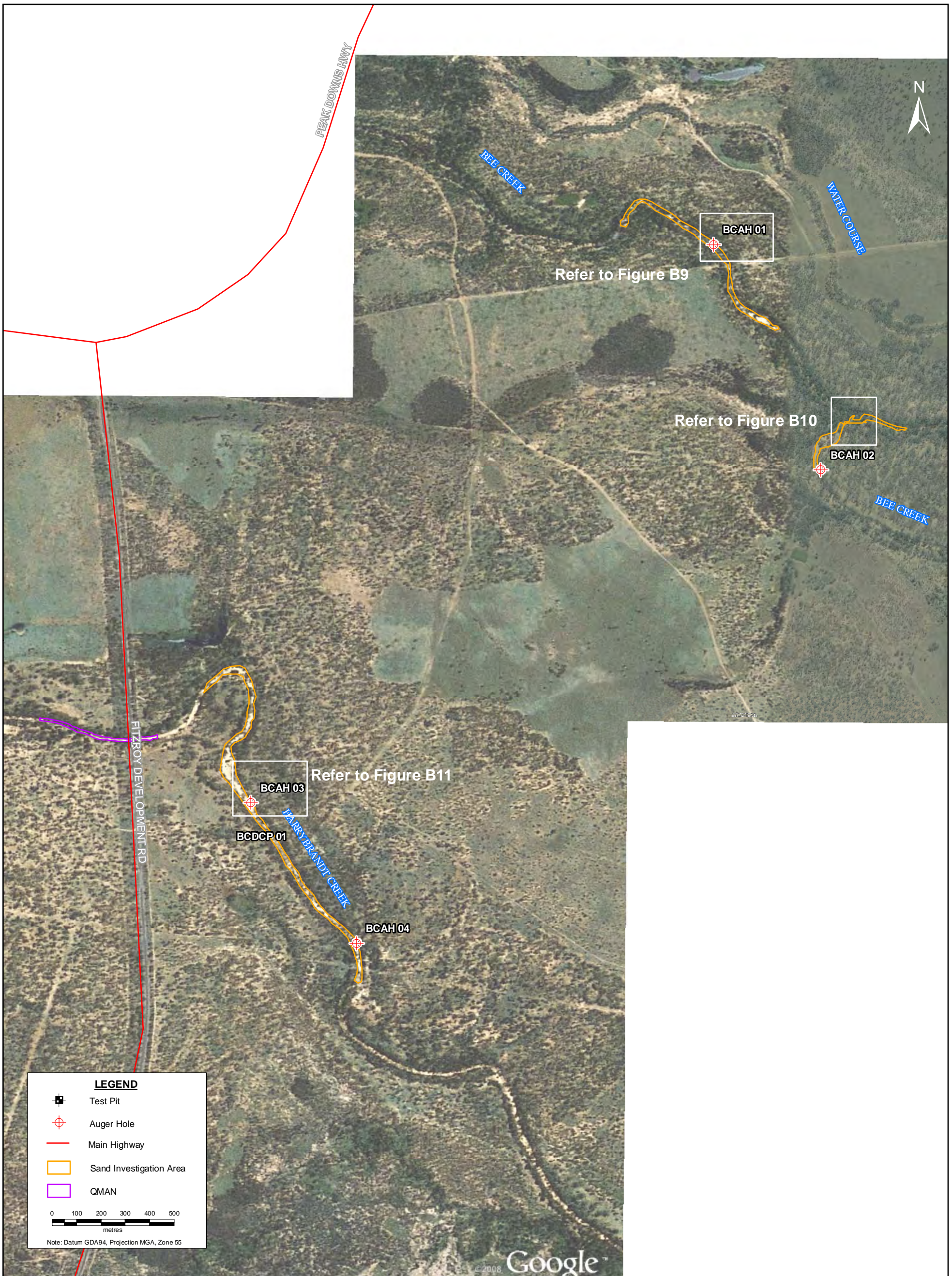


Information contained on this drawing is the copyright of Golder Associates Pty. Ltd. Unauthorised use or reproduction of this plan either wholly or in part without written permission infringes copyright. © Golder Associates Pty. Ltd.

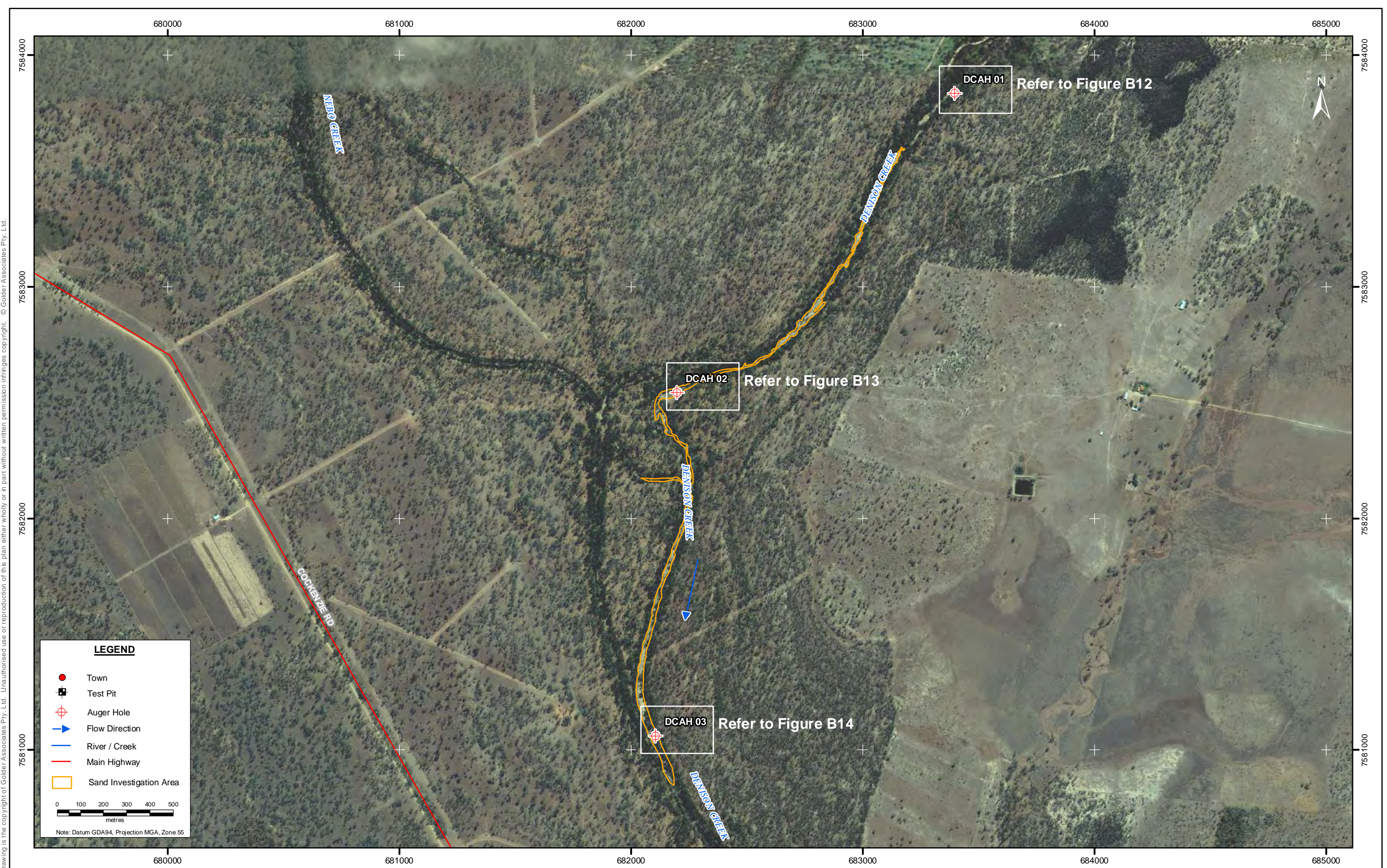


Note:
1. Imagery copyright Google Earth Pro.



CLIENT SunWater		PROJECT Connors River Dam & Pipeline		
DRAWN DK/PB	DATE 09-09-09	TITLE BEE CREEK		
CHECKED AB*	DATE 09-09-09	PROJECT No 077632049		
SCALE 1:15,000		FIGURE No 6	REV No 2	A3

File Location:
Note: The * beside the typed initials denotes the original drawing issue was signed or initialled by that respective person.



Note:
1. Imagery copyright Google Earth Pro.



CLIENT SunWater		PROJECT Connors River Dam & Pipeline		
DRAWN DK/PB	DATE 09-09-09	TITLE DENISON CREEK		
CHECKED AB*	DATE 09-09-09			
SCALE 1:15,000	PROJECT No 077632049	FIGURE No 7	REV No 0	A3

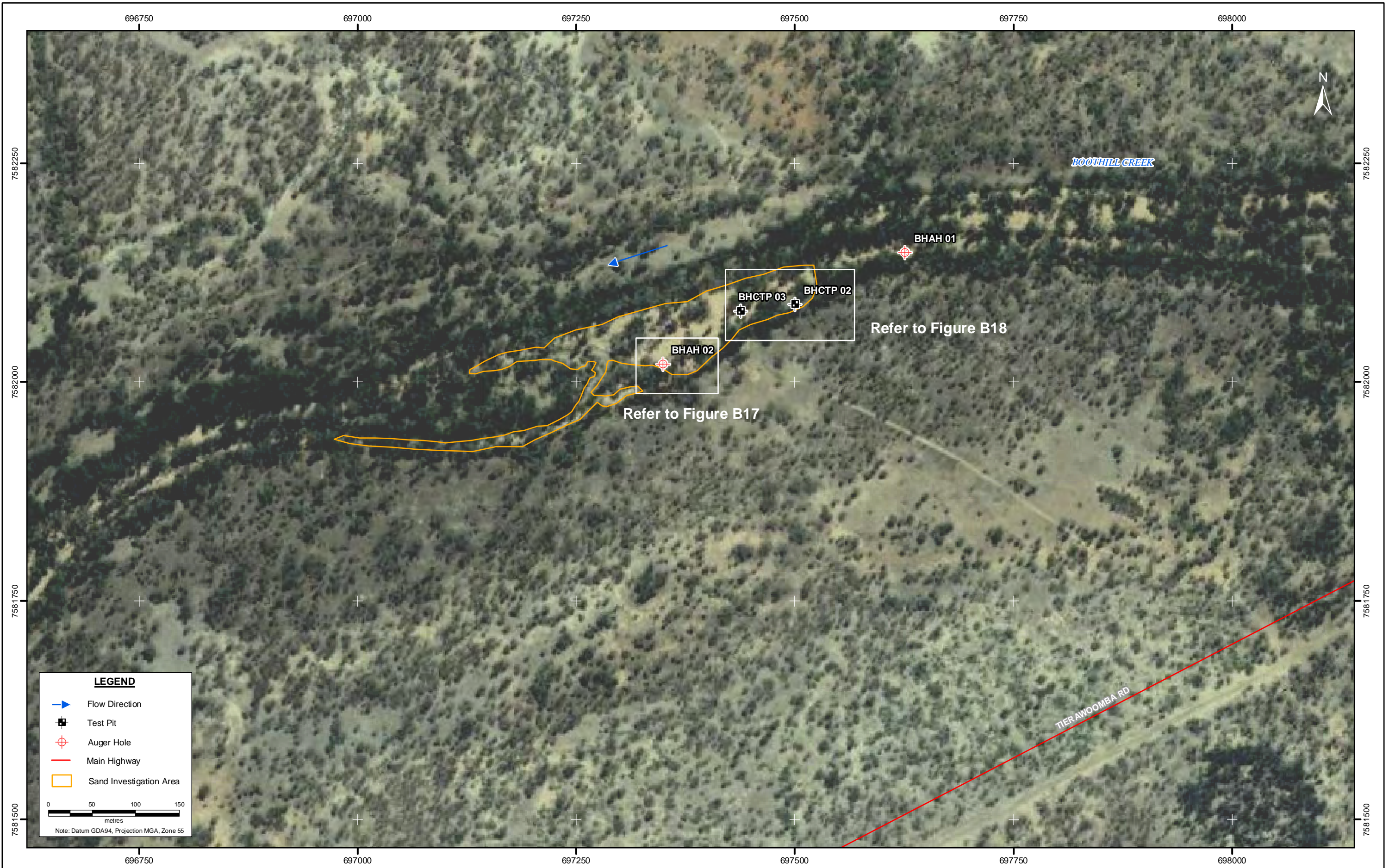
Information contained on this drawing is the copyright of Golder Associates Pty. Ltd. Unauthorised use or reproduction of this plan either wholly or in part without written permission infringes copyright. © Golder Associates Pty. Ltd.



Note:
1. Imagery copyright Google Earth Pro.

	CLIENT SunWater		PROJECT Connors River Dam & Pipeline		
	DRAWN DK/PB	DATE 09-09-09	TITLE FUNNEL CREEK		
	CHECKED AB*	DATE 09-09-09	PROJECT No 077632049	FIGURE No 8	REV No 1
	SCALE 1:10,000		A3		

Information contained on this drawing is the copyright of Golder Associates Pty. Ltd. Unauthorised use or reproduction of this plan either wholly or in part without written permission infringes copyright. © Golder Associates Pty. Ltd.



Note:
1. Imagery copyright Google Earth Pro.

	CLIENT SunWater		PROJECT Connors River Dam & Pipeline		
	DRAWN DK/PB	DATE 09-09-09	TITLE BOOTHILL CREEK		
	CHECKED AB*	DATE 09-09-09			
	SCALE 1:4,000		PROJECT No 077632049	FIGURE No 9	REV No 2

Information contained on this drawing is the copyright of Golder Associates Pty. Ltd. Unauthorised use or reproduction of this plan either wholly or in part without written permission infringes copyright. © Golder Associates Pty. Ltd.



LEGEND

- Flow Direction
- Test Pit
- Auger Hole
- Main Highway
- Sand Investigation Area

0 20 40 60 80 100
metres






Note: Datum GDA94, Projection MGA, Zone 55

Note:
1. Imagery copyright Google Earth Pro.

	CLIENT SunWater		PROJECT Connors River Dam & Pipeline		
	DRAWN DK/PB	DATE 09-09-09	TITLE FUNNEL CREEK JUNCTION		
	CHECKED AB*	DATE 09-09-09			
	SCALE 1:2,500		PROJECT No 077632049	FIGURE No 10	REV No 2

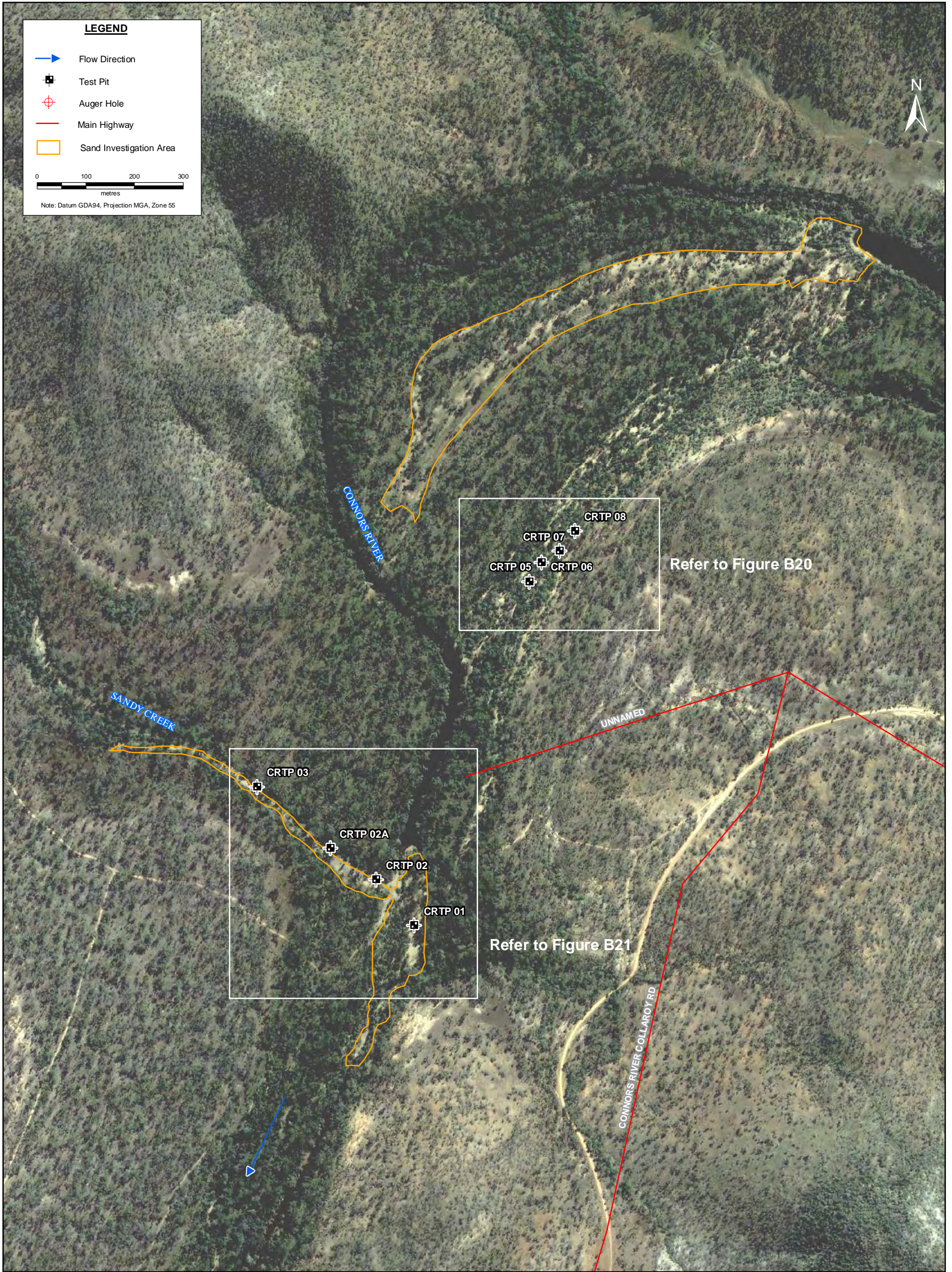
File Location: R:\Brisbane.07\Geotech.07\077632049_ConnorsRiverDam\GIS\Projects\ArcGIS\077632049_DR_F010_Rev3_Funnel&BoothillCreek.mxd
 Note: The * beside the typed initials denotes the original drawing issue was signed or initialed by that respective person.

LEGEND

-  Flow Direction
-  Test Pit
-  Auger Hole
-  Main Highway
-  Sand Investigation Area

0 100 200 300
metres

Note: Datum GDA94, Projection MGA, Zone 55



Information contained on this drawing is the copyright of Golder Associates Pty. Ltd. Unauthorised use or reproduction of this plan either wholly or in part without written permission infringes copyright. © Golder Associates Pty. Ltd.

Note:
1. Imagery copyright Google Earth Pro.



CLIENT SunWater		PROJECT Connors River Dam & Pipeline		
DRAWN DK/PB	DATE 29-08-09	TITLE CONNORS RIVER SITE AND CONNORS RIVER & SANDY CREEK		
CHECKED AB*	DATE 29-08-09	PROJECT No 077632049	FIGURE No 11	REV No 2
SCALE 1:7,500				A3