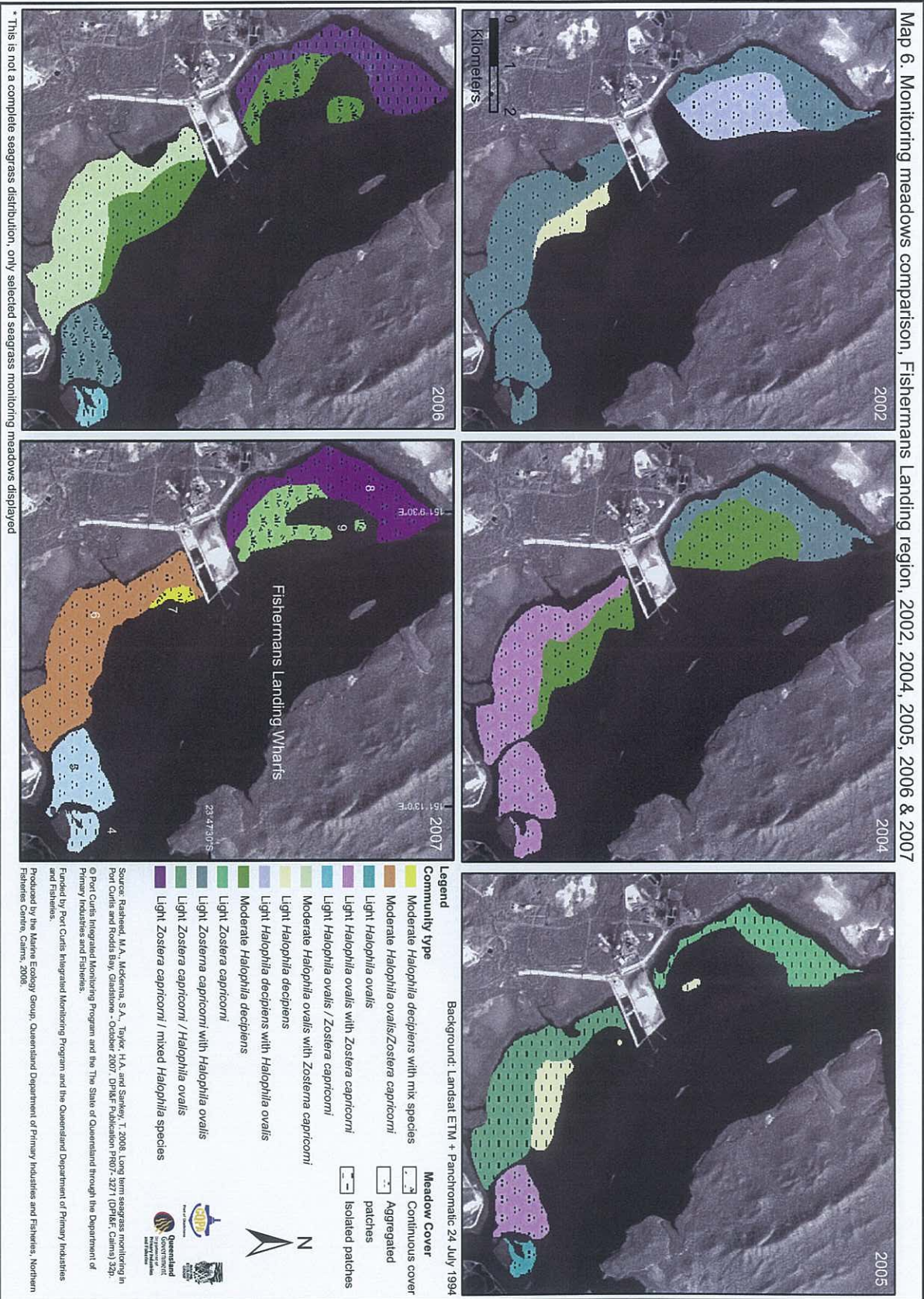
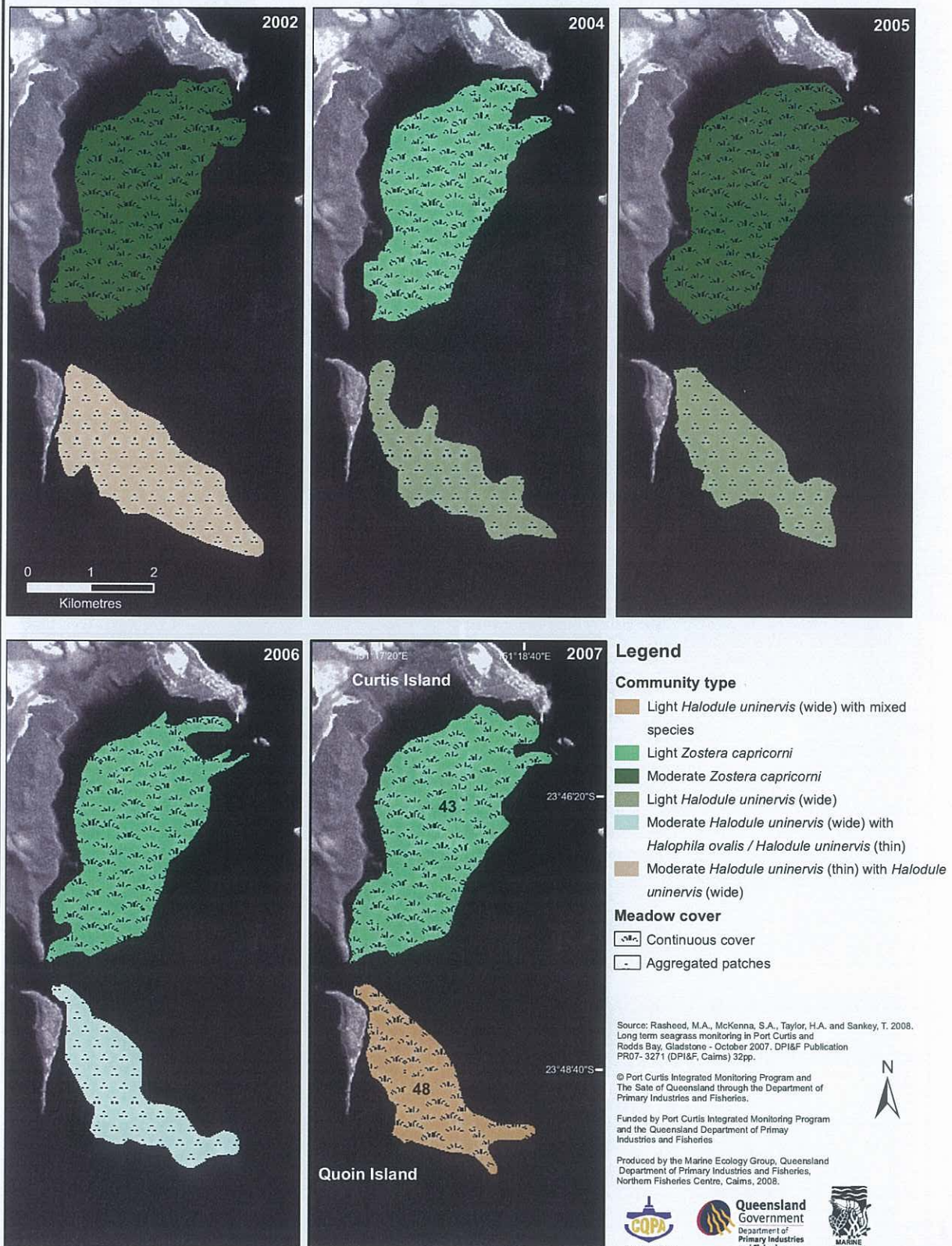


Map 6. Monitoring meadows comparison, Fishermans Landing region, 2002, 2004, 2005, 2006 & 2007



* This is not a complete seagrass distribution, only selected seagrass monitoring meadows displayed

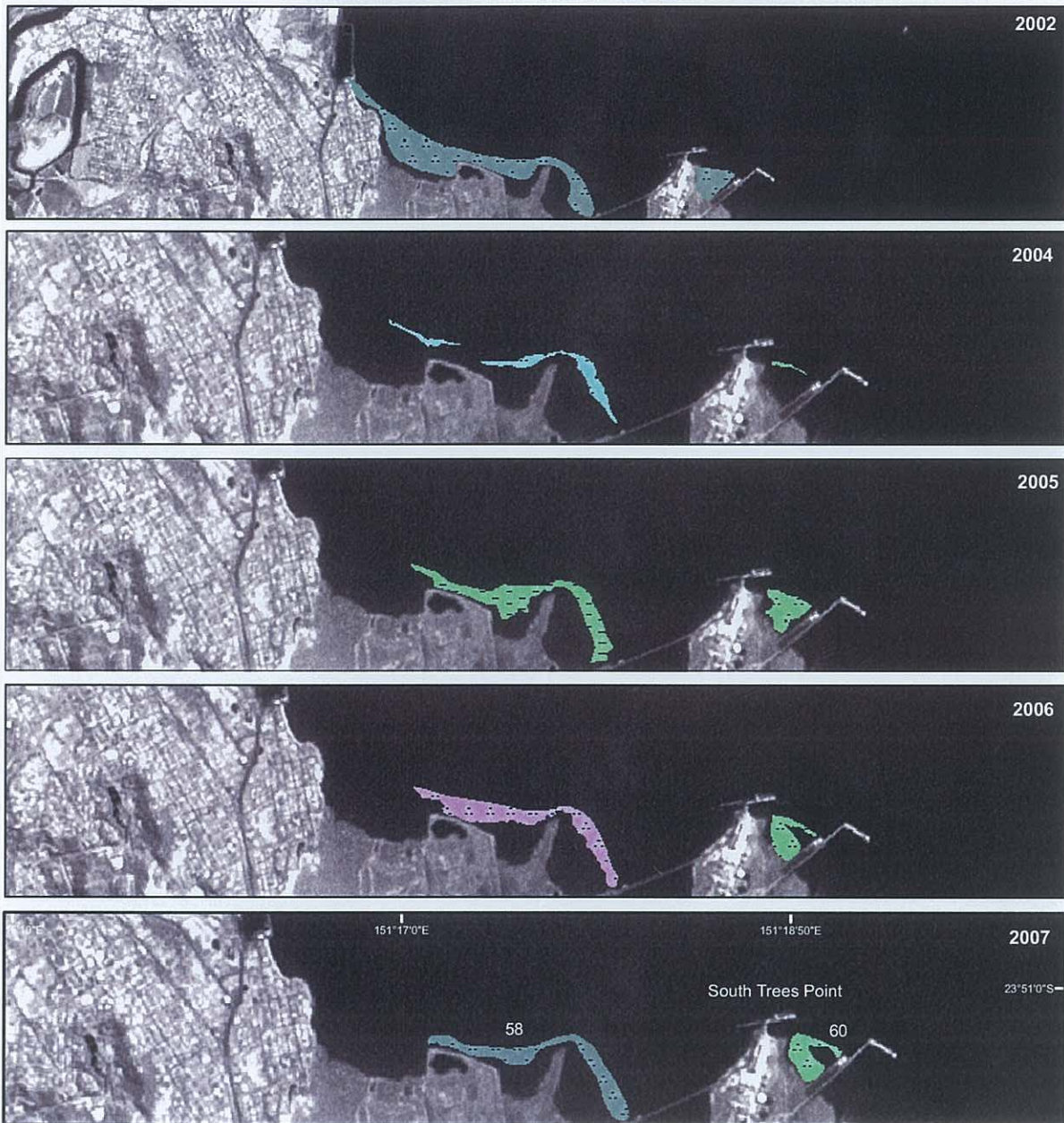
Map 7. Monitoring meadows comparison in the Quoin Island region, 2002, 2004, 2005, 2006 & 2007



* This is not a complete seagrass distribution, only selected seagrass monitoring meadows displayed

Background: Landsat ETM + Panchromatic 24 July 1994

Map 8. Monitoring meadows comparison in the South Trees region, 2002, 2004, 2005, 2006 & 2007



Background: Landsat ETM + Panchromatic 24 July 1994

Legend

Community type

- Light *Halophila ovalis* with *Zostera capricorni*
- Light *Halophila ovalis*/*Zostera capricorni*,
- Light *Zostera capricorni*
- Light *Zostera capricorni* with *Halophila ovalis*

Meadow cover

- Aggregated Patches
- Continuous Cover
- Isolated Patches



Source: Rasheed, M.A., McKenna, S.A., Taylor, H.T and Sankey, T. 2008. Long term seagrass monitoring in Port Curtis and Rodds Bay, Gladstone - October 2007. DPI&F Publication PR07 - (DPI&F, Cairns) 32p.

© Port Curtis Integrated Monitoring Program and The State of Queensland through the Department of Primary Industries and Fisheries.

Funded by Port Curtis Integrated Monitoring Program and the Queensland Department of Primary Industries and Fisheries

Produced by the Marine Ecology Group, Queensland Department of Primary Industries and Fisheries, Northern Fisheries Centre, Cairns, 2008.



* This is not a complete seagrass distribution, only selected seagrass monitoring meadows displayed

Map 9. Comparison of monitoring meadows in the Rodds Bay region, 2002, 2004, 2005, 2006 & 2007

