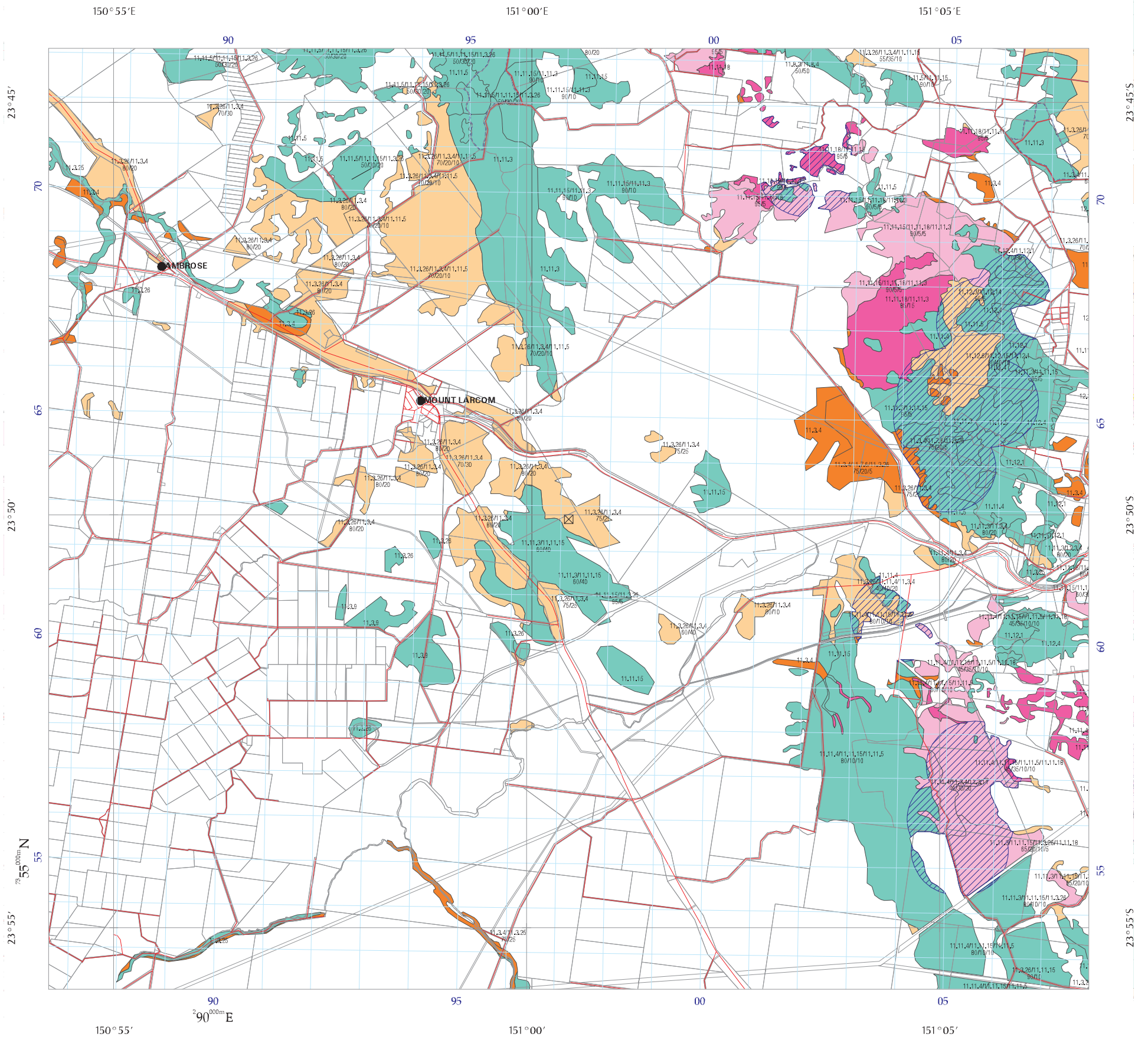


Appendix A

Ecological Searches



2003 REGIONAL ECOSYSTEM MAP

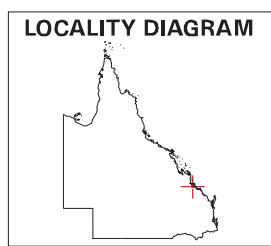
Based on 2003 Landsat TM imagery

Requested By: WAINA@CONWAG.COM
Date: 20 Jul 07 Time: 13.55.47

Centered on point position:

Latitude: -23.8341 Longitude: 151.0085 (decimal degrees)

This is a copy of the certified regional ecosystem map defined by the map extent for the purpose of the *Vegetation Management Act 1999*. Areas of property maps of assessable vegetation (PMAVs) are not shown on this map.



- 2003 Remnant endangered regional ecosystem
- Dominant
- Sub-dominant
- 2003 Remnant of concern regional ecosystem
- Dominant
- Sub-dominant
- 2003 Remnant not of concern regional ecosystem
- Non-remnant
- Plantation Forest
- Dam or Reservoir
- 2003 Remnant Vegetation Cover (RVC)
- Vegetation Management Act Essential Habitat Area identified as essential habitat by the EPA for a species of wildlife listed as endangered, vulnerable, near threatened or rare under the *Nature Conservation Act 1992*. For further information on VMA Essential Habitat, please see the attached VMA Essential Habitat map.
- Certified Map Amendment area
- Roads
- © MapInfo Australia Pty Ltd 2006
- Bioregion boundary
- National Park, Conservation Area State Forest and other reserves
- Cadastre line
- The maximum spatial error of parcels extracted for this map from the Digital Cadastral Data Base (DCDB) range from: 14m to 251m at a 95% confidence level. Property boundaries shown are provided as a locational aid only.
- Towns
- ⊠ Coordinate entered

Defined map areas are labelled with the regional ecosystem (RE) code along with the percentage breakdown if more than one RE occurs within the area. Detailed definitions of regional ecosystems are available from www.epa.qld.gov.au/REDD. Defined map areas smaller than 5ha may not be labelled.

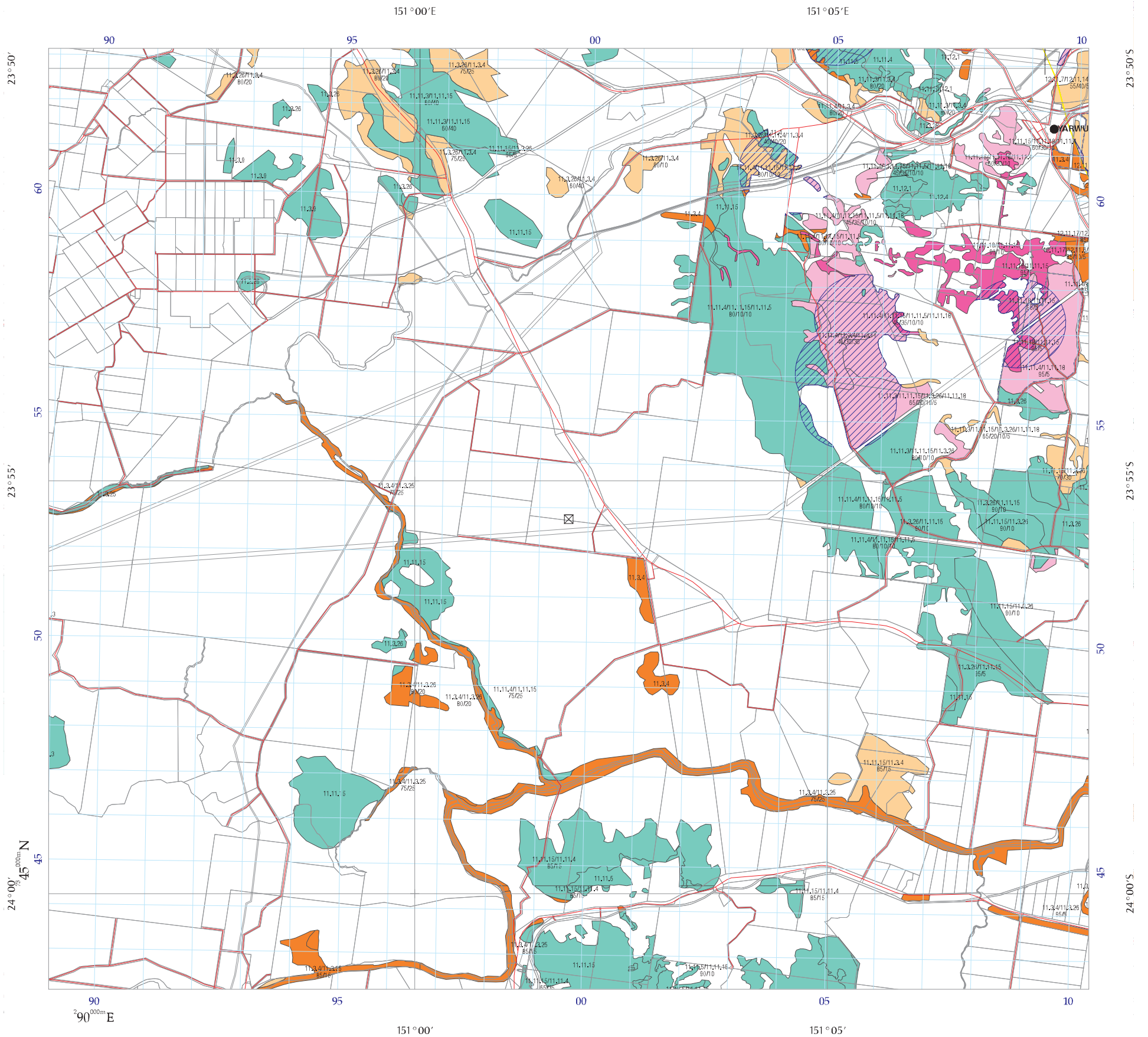
Regional ecosystem linework has been compiled at a scale of 1:100 000, except in designated areas where a compilation scale of 1:50 000 is available. Linework should be used as a guide only. The positional accuracy of RE data mapped at a scale of 1:100 000 is +/- 100 metres. The extent of remnant regional ecosystems as of 2003, depicted on this map is based on rectified 2003 Landsat TM imagery (supplied by SLATS, Department of Natural Resources and Water).

Disclaimer:
While every care is taken to ensure the accuracy of this product, the Department of Natural Resources and Water, the Environmental Protection Agency and MapInfo Australia Pty Ltd, makes no representations or warranties about its accuracy, reliability, completeness or suitability for any particular purpose and disclaims all responsibility and all liability (including without limitation, liability in negligence) for all expenses, losses, damages (including indirect or consequential damage) and costs which you might incur as a result of the product being inaccurate or incomplete in any way and for any reason.

All datasets are updated as they become available to provide the most current information as of the date shown on this map.

Additional information is required for the purposes of land clearing or assessment of a regional ecosystem map or PMAV applications. For further information go to the web site: www.nrw.qld.gov.au/vegetation or contact the Department of Natural Resources and Water.

Digital regional ecosystem data is available in shapefile format, for Lot on Plans from www.epa.qld.gov.au/REDDATA or from the Queensland Herbarium for larger areas.
Email: regional.ecosystem@epa.qld.gov.au



2003 REGIONAL ECOSYSTEM MAP

Based on 2003 Landsat TM imagery

Requested By: MARTINA@CONWAG.COM
Date: 29 Jun 07 Time: 15.44.09

Centered on point position:

Latitude: -23.9243 Longitude: 151.0311 (decimal degrees)

This is a copy of the certified regional ecosystem map defined by the map extent for the purpose of the *Vegetation Management Act 1999*. Areas of property maps of assessable vegetation (PMAVs) are not shown on this map.

Defined map areas are labelled with the regional ecosystem (RE) code along with the percentage breakdown if more than one RE occurs within the area. Detailed definitions of regional ecosystems are available from www.epa.qld.gov.au/REDD. Defined map areas smaller than 5ha may not be labelled.

Regional ecosystem linework has been compiled at a scale of 1:100 000, except in designated areas where a compilation scale of 1:50 000 is available. Linework should be used as a guide only. The positional accuracy of RE data mapped at a scale of 1:100 000 is +/-100 metres. The extent of remnant regional ecosystems as of 2003, depicted on this map is based on rectified 2003 Landsat TM imagery (supplied by SLATS, Department of Natural Resources and Water).

Disclaimer:

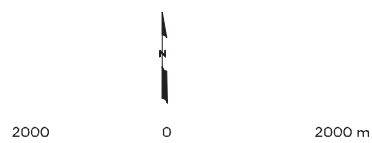
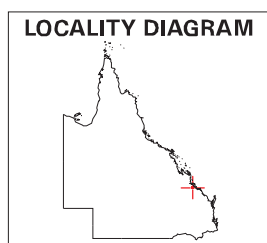
While every care is taken to ensure the accuracy of this product, the Department of Natural Resources and Water, the Environmental Protection Agency and MapInfo Australia Pty Ltd, makes no representations or warranties about its accuracy, reliability, completeness or suitability for any particular purpose and disclaims all responsibility and all liability (including without limitation, liability in negligence) for all expenses, losses, damages (including indirect or consequential damage) and costs which you might incur as a result of the product being inaccurate or incomplete in any way and for any reason.

All datasets are updated as they become available to provide the most current information as of the date shown on this map.

Additional information is required for the purposes of land clearing or assessment of a regional ecosystem map or PMAV applications. For further information go to the web site: www.nrw.qld.gov.au/vegetation or contact the Department of Natural Resources and Water.

Digital regional ecosystem data is available in shapefile format, for Lot on Plans from www.epa.qld.gov.au/REDATA or from the Queensland Herbarium for larger areas.
Email: regional.ecosystem@epa.qld.gov.au

- 2003 Remnant endangered regional ecosystem
- Dominant
- Sub-dominant
- 2003 Remnant of concern regional ecosystem
- Dominant
- Sub-dominant
- 2003 Remnant not of concern regional ecosystem
- Non-remnant
- Plantation Forest
- Dam or Reservoir
- 2003 Remnant Vegetation Cover (RVC)
- Vegetation Management Act Essential Habitat
Area identified as essential habitat by the EPA for a species of wildlife listed as endangered, vulnerable, near threatened or rare under the *Nature Conservation Act 1992*.
For further information on VMA Essential Habitat, please see the attached VMA Essential Habitat map.
- Certified Map Amendment area
- Roads
© MapInfo Australia Pty Ltd 2006
- Bioregion boundary
- National Park, Conservation Area State Forest and other reserves
- Cadastre line
The maximum spatial error of parcels extracted for this map from the Digital Cadastral Data Base(DCDB) range from: 14m to 251m at a 95% confidence level. Property boundaries shown are provided as a locational aid only.
- Towns
- Coordinate entered



Horizontal Datum: Geocentric Datum of Australia 1994 (GDA94)

© The State of Queensland, 2007