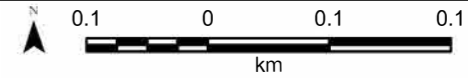


EAST END RAW WATER PIPELINE PROJECT
FIGURE 1 : LAND SUBJECT TO LAND OWNERS REQUEST
LOT 31 ON SP129157



Spatial Reference

Legend

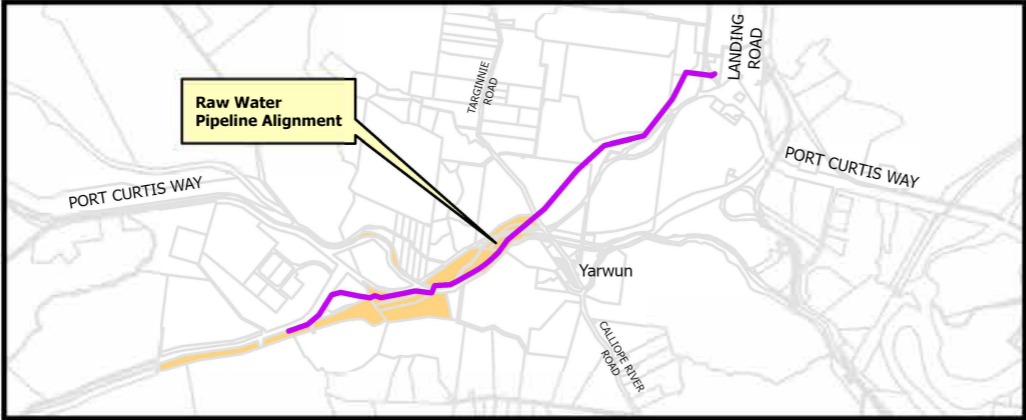
- Lot 31 on SP129157
- East End Raw Water Pipeline
- Easement
- Property Boundary

PLANS AND DOCUMENTS
referred to in the
SDA APPROVAL



SDA approval: AP2024/014

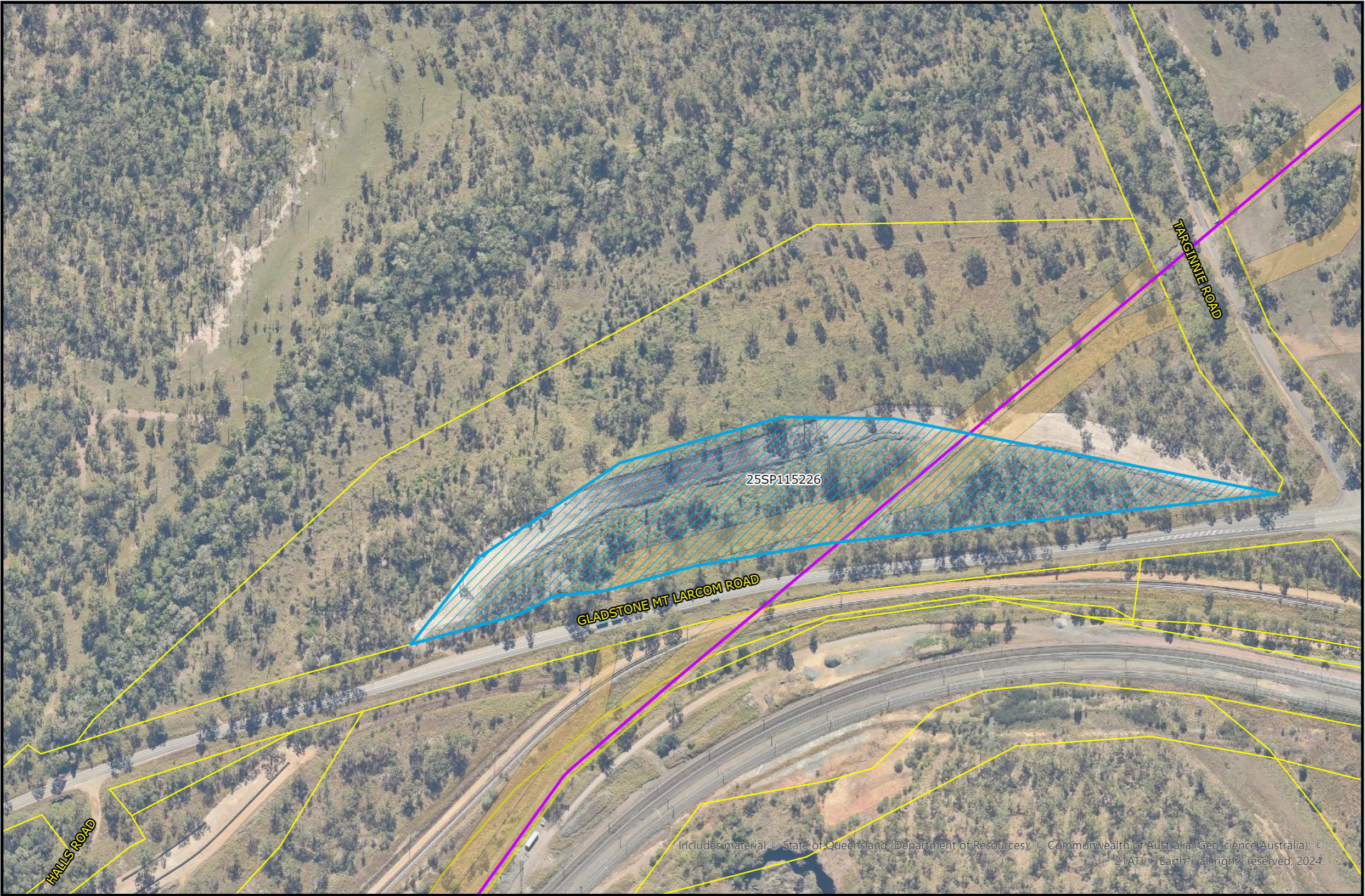
Includes material © State of Queensland (Department of Resources); © Commonwealth of Australia (Geoscience Australia); © 2014; © Earth-i; all rights reserved, 2024.



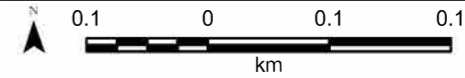
PROPERTY DETAILS	
LAND OWNER	Gladstone Ports Corporation Limited
LOCAL GOVERNMENT	Gladstone Regional Council

PROJECTION UTM ZONE 56
(Datum GDA2020)

© Copyright Gladstone Area Water Board (GAWB). This map/drawing is the property of GAWB and must not be copied or reproduced without the authority of GAWB. No liability will be accepted for any loss or damage which may arise from the use of or reliance upon this information.
Compiled by: C. Kelso Date 19/11/2024
D:\GDA2020\ArcGIS\Projects\CAP2020-069
000-G-MAP-3293 Version x Date 19/11/2024



**EAST END RAW WATER PIPELINE PROJECT
FIGURE 2 : LAND SUBJECT TO LAND
OWNERS REQUEST
LOT 25 ON SP115226**



Spatial Reference

Legend

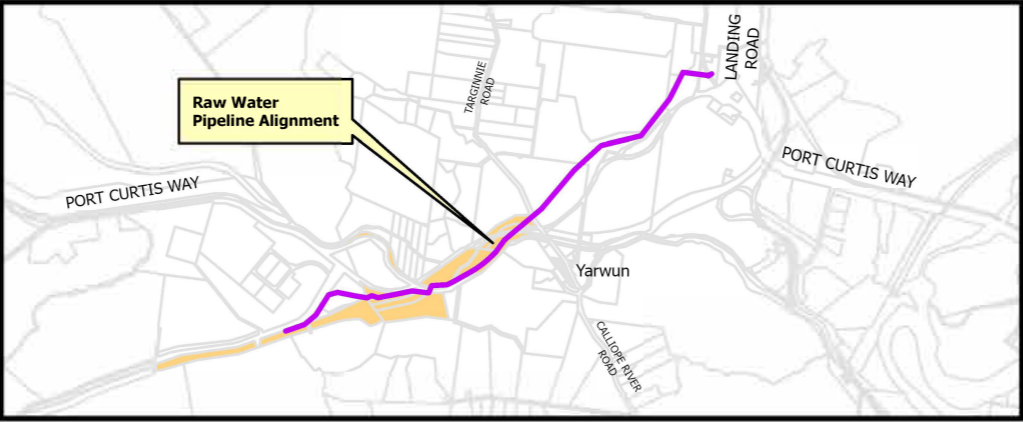
- Lot 25 on SP115226
- East End Raw Water Pipeline
- Easement
- Property Boundary

**PLANS AND DOCUMENTS
referred to in the
SDA APPROVAL**



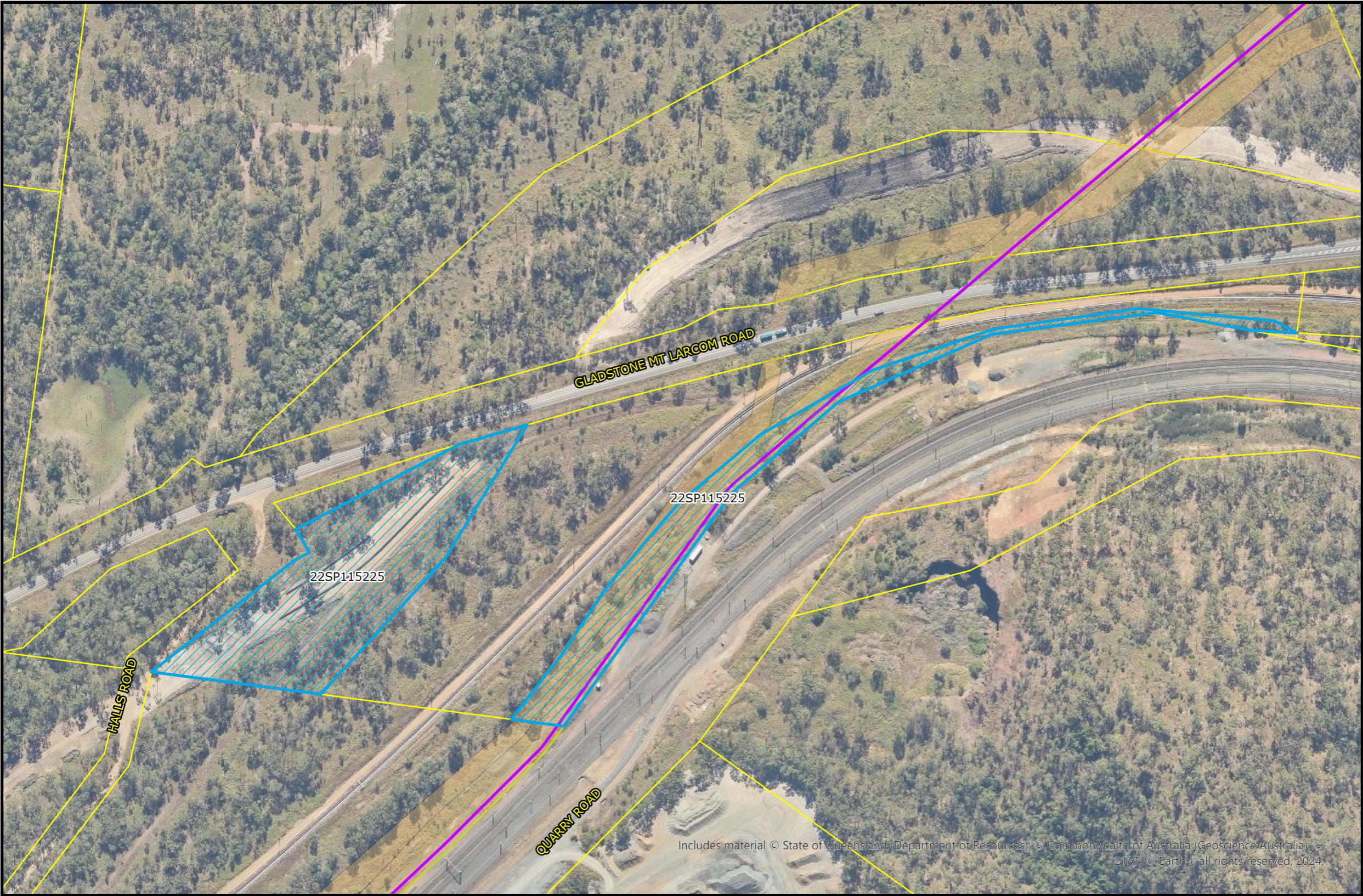
SDA approval: AP2024/014

Includes material © State of Queensland (Department of Resources); © Commonwealth of Australia (Geoscience Australia); © 2014; © Earth-i; all rights reserved, 2024.

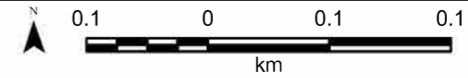


PROPERTY DETAILS	
LAND OWNER	Gladstone Ports Corporation Limited
LOCAL GOVERNMENT	Gladstone Regional Council

**PROJECTION UTM ZONE 56
(Datum GDA2020)**



**EAST END RAW WATER PIPELINE PROJECT
FIGURE 3 : LAND SUBJECT TO LAND
OWNERS REQUEST
LOT 22 ON SP115225**



Spatial Reference

Legend

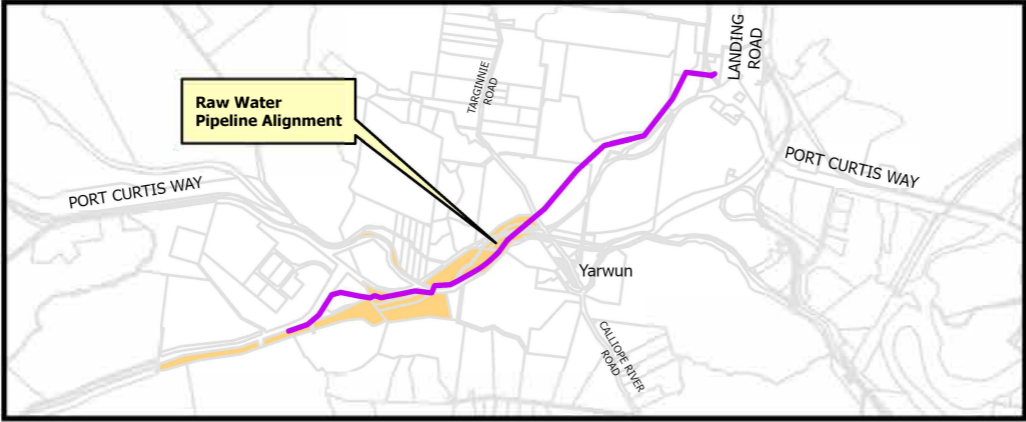
- Lot 22 on SP115225
- East End Raw Water Pipeline
- Easement
- Property Boundary

PLANS AND DOCUMENTS
referred to in the
SDA APPROVAL



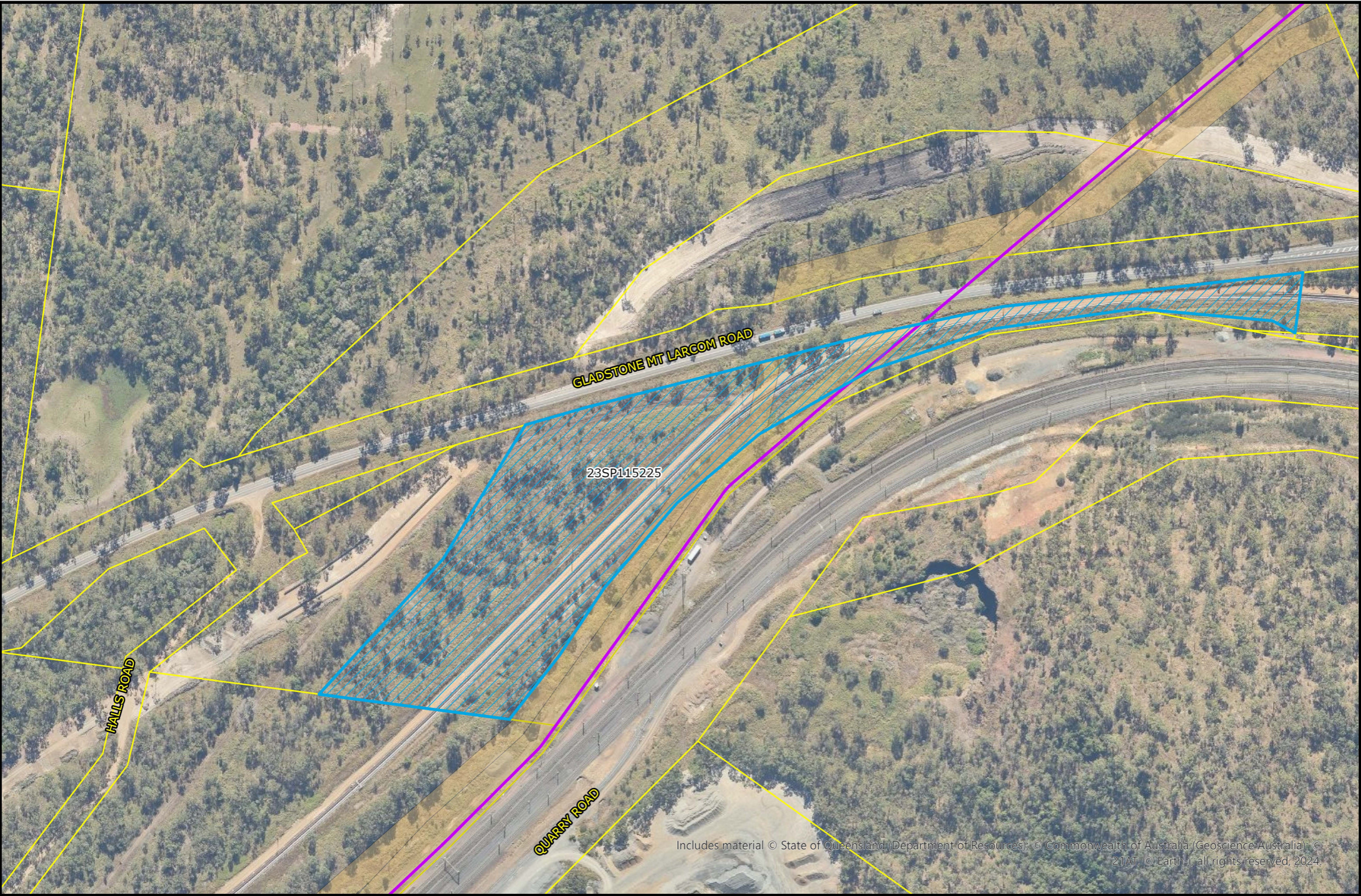
SDA approval: AP2024/014

Includes material © State of Queensland (Department of Resources); © Commonwealth of Australia (Geoscience Australia); © 2014; © Earth 11 all rights reserved, 2024.

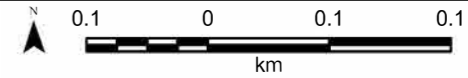


PROPERTY DETAILS	
LAND OWNER	Gladstone Ports Corporation Limited
LOCAL GOVERNMENT	Gladstone Regional Council

**PROJECTION UTM ZONE 56
(Datum GDA2020)**



EAST END RAW WATER PIPELINE PROJECT
FIGURE 4 : LAND SUBJECT TO LAND OWNERS REQUEST
LOT 23 ON SP115225



Spatial Reference

Legend

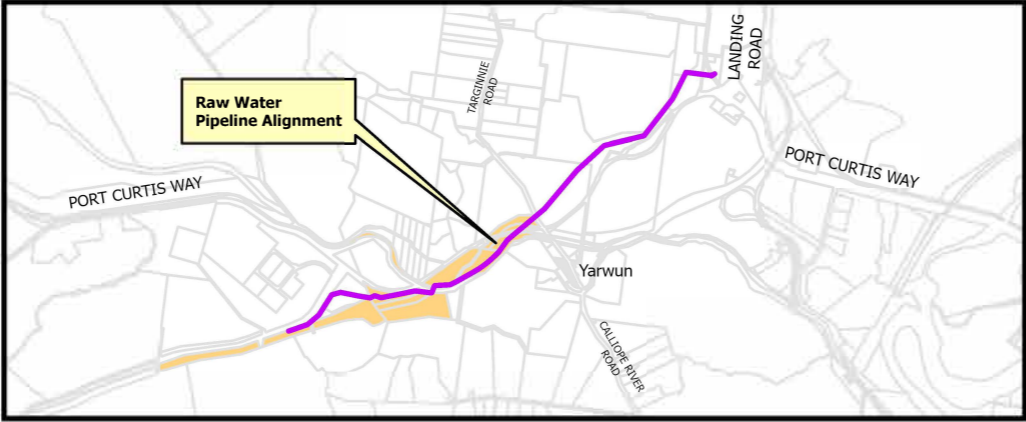
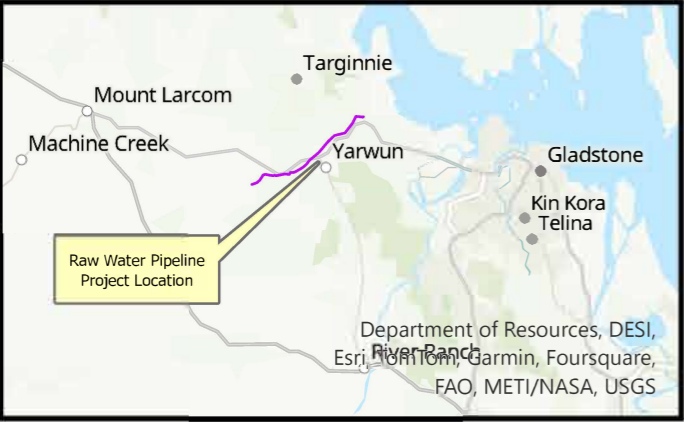
- Lot 23 on SP115225
- East End Raw Water Pipeline
- Easement
- Property Boundary

PLANS AND DOCUMENTS referred to in the SDA APPROVAL



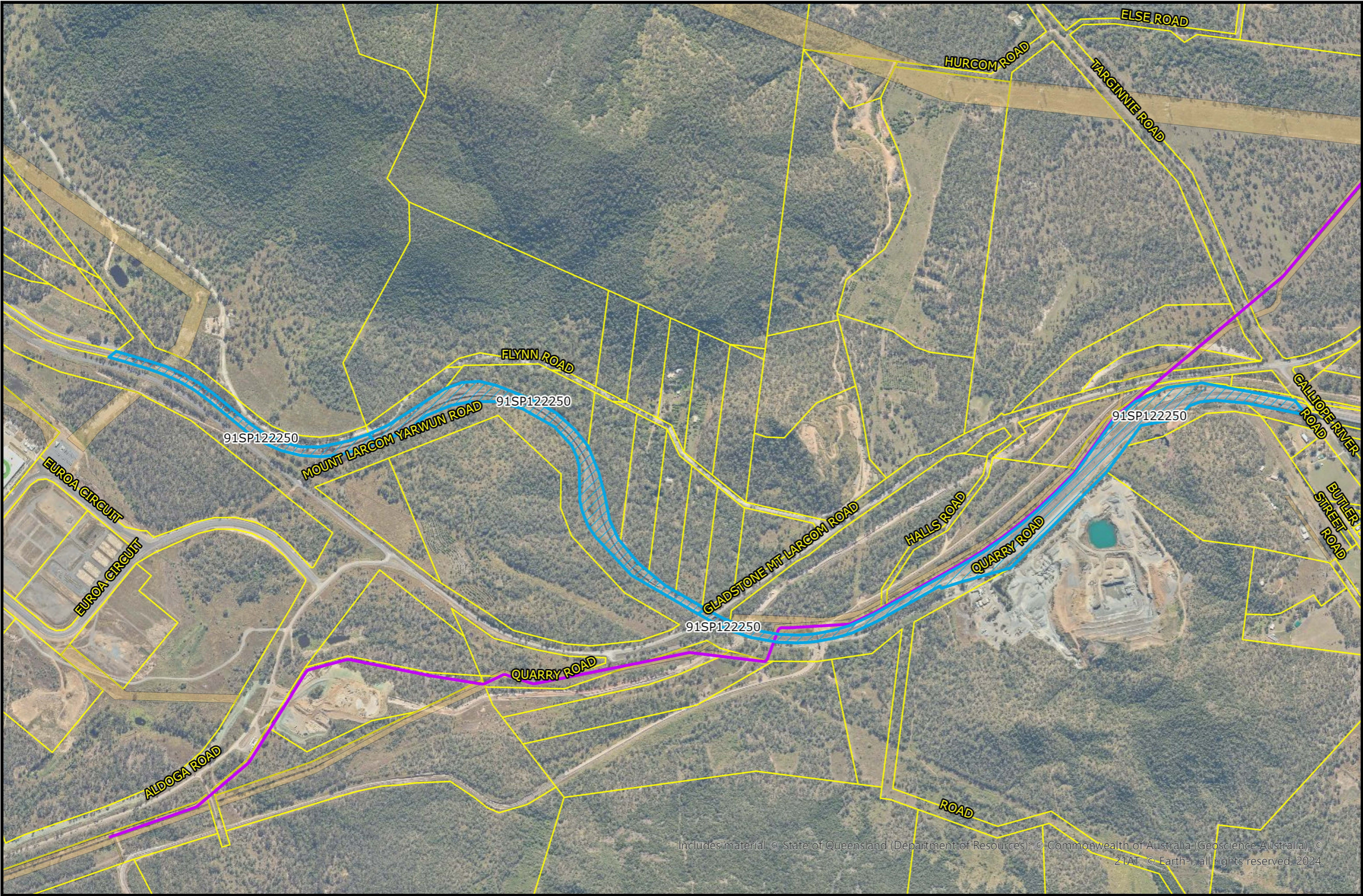
SDA approval: AP2024/014

Includes material © State of Queensland (Department of Resources); © Commonwealth of Australia (Geoscience Australia); © 2024; © Earth11 all rights reserved, 2024.

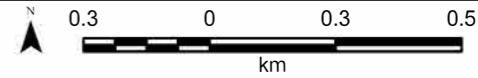


PROPERTY DETAILS	
LAND OWNER	Gladstone Ports Corporation Limited
LOCAL GOVERNMENT	Gladstone Regional Council

PROJECTION UTM ZONE 56 (Datum GDA2020)



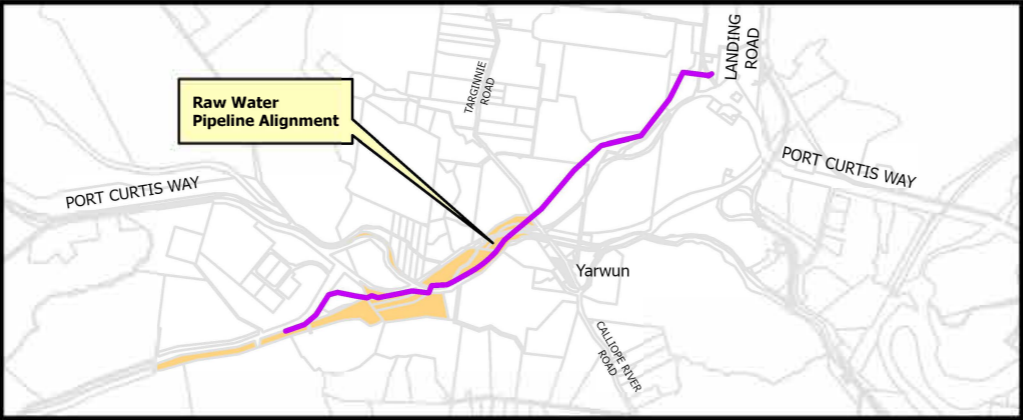
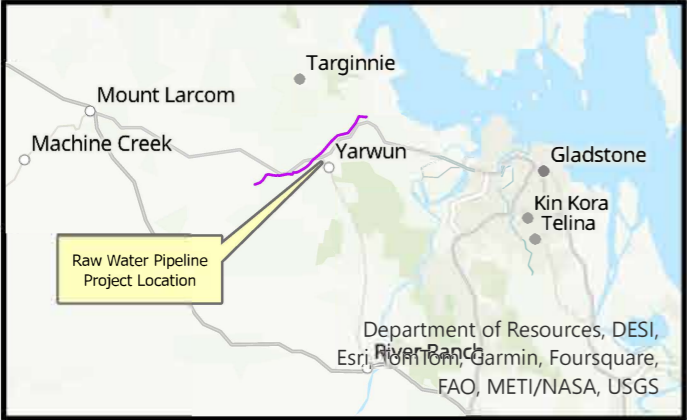
**EAST END RAW WATER PIPELINE PROJECT
FIGURE 5 : LAND SUBJECT TO LAND
OWNERS REQUEST
LOT 91 ON SP122250**



Spatial Reference

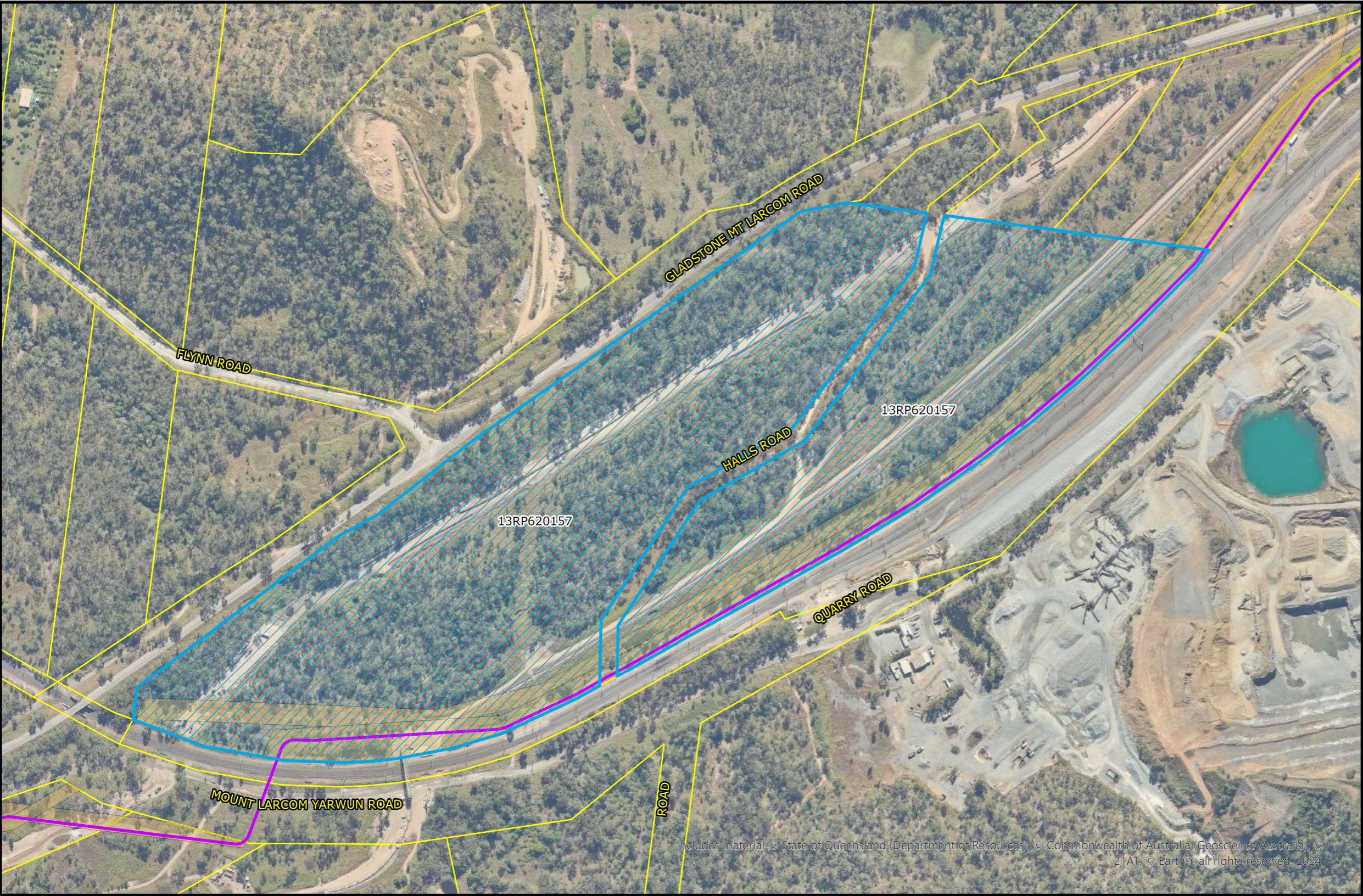
Legend

- Lot 91 on SP122250
- East End Raw Water Pipeline
- Easement
- Property Boundary

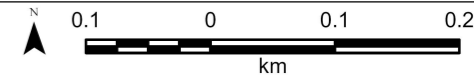


PROPERTY DETAILS	
LAND OWNER	Gladstone Ports Corporation Limited
LOCAL GOVERNMENT	Gladstone Regional Council

**PROJECTION UTM ZONE 56
(Datum GDA2020)**



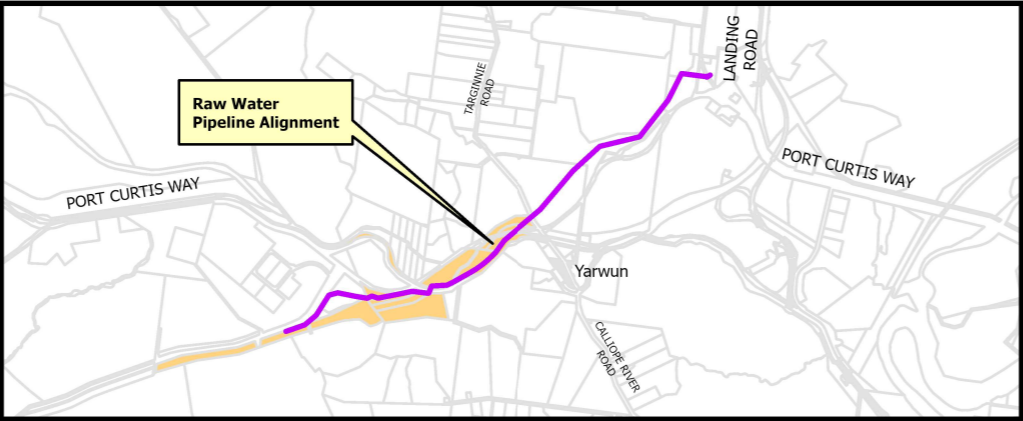
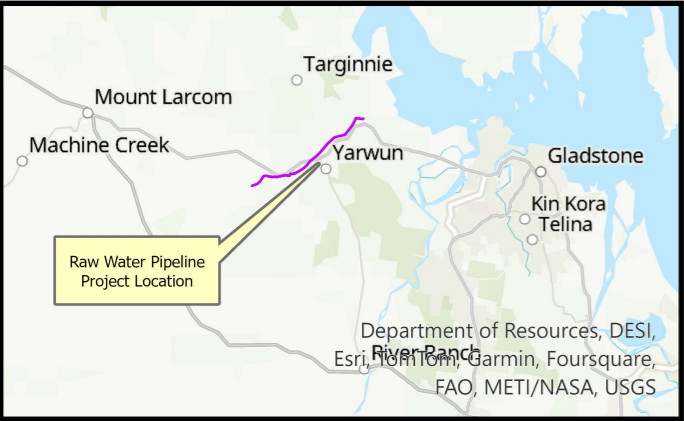
EAST END RAW WATER PIPELINE PROJECT
FIGURE 6 : LAND SUBJECT TO LAND OWNERS REQUEST
LOT 13 ON RP620157



Spatial Reference

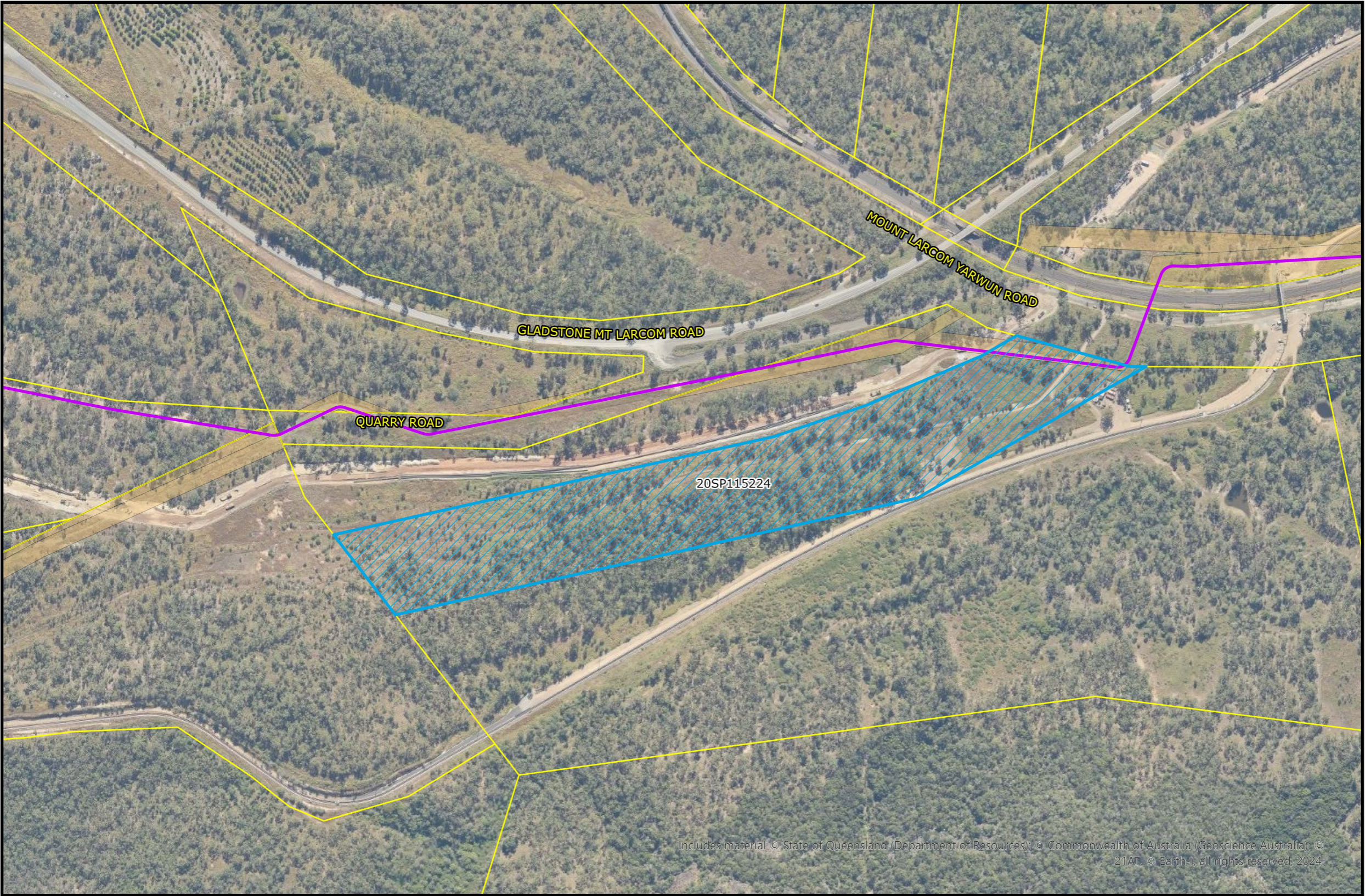
Legend

- Lot 13 on RP620157
- East End Raw Water Pipeline
- Easement
- Property Boundary

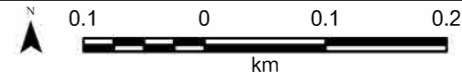


PROPERTY DETAILS	
LAND OWNER	Gladstone Ports Corporation Limited
LOCAL GOVERNMENT	Gladstone Regional Council

PROJECTION UTM ZONE 56
(Datum GDA2020)



**EAST END RAW WATER PIPELINE PROJECT
FIGURE 7 : LAND SUBJECT TO LAND
OWNERS REQUEST
LOT 20 ON SP115224**



Spatial Reference

Legend

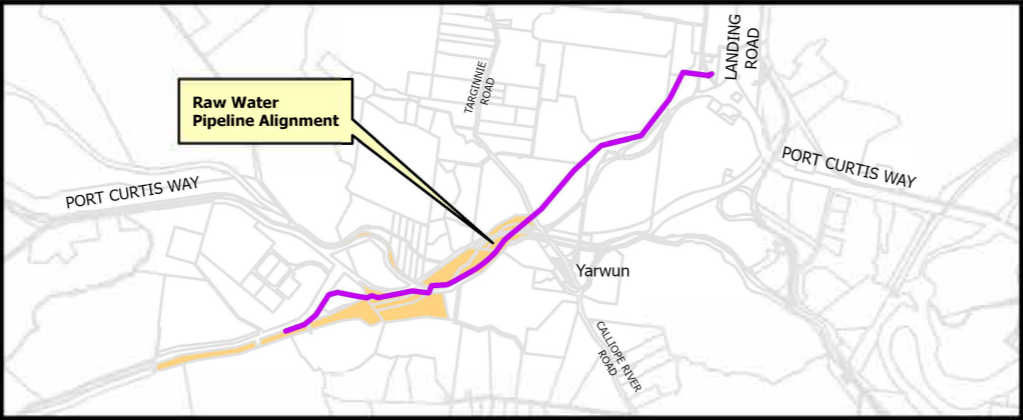
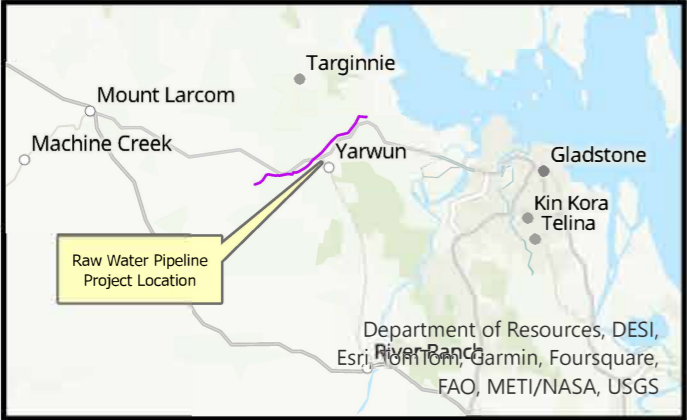
- Lot 20 on SP115224
- East End Raw Water Pipeline
- Easement
- Property Boundary

PLANS AND DOCUMENTS
referred to in the
SDA APPROVAL



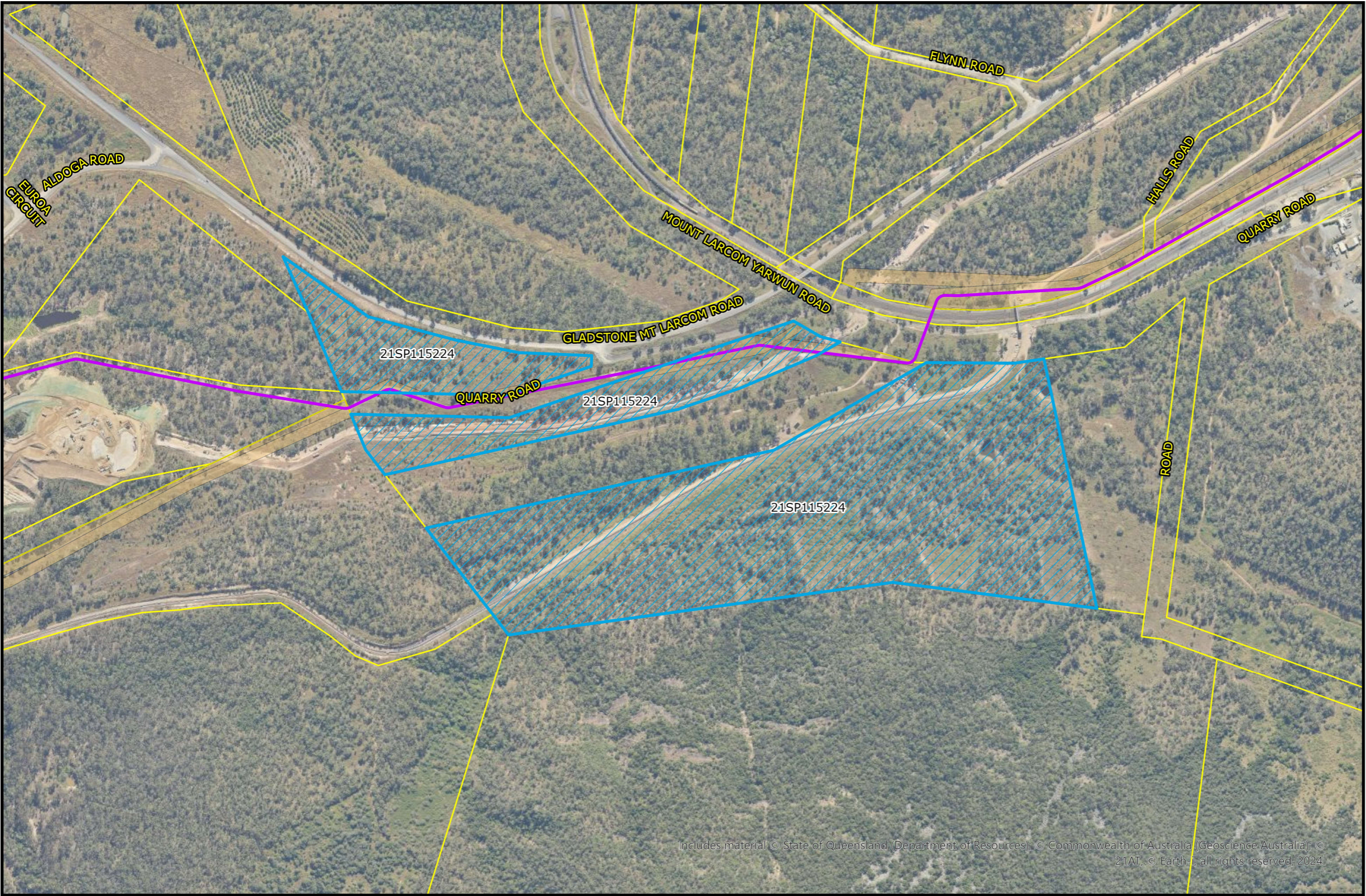
SDA approval: AP2024/014

Includes material © State of Queensland (Department of Resources); © Commonwealth of Australia (Geoscience Australia); © 21AT; © EarthAI; all rights reserved. 2024.

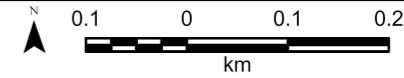


PROPERTY DETAILS	
LAND OWNER	Gladstone Ports Corporation Limited
LOCAL GOVERNMENT	Gladstone Regional Council

**PROJECTION UTM ZONE 56
(Datum GDA2020)**



EAST END RAW WATER PIPELINE PROJECT
FIGURE 8 : LAND SUBJECT TO LAND OWNERS REQUEST
LOT 21 ON SP115224



Spatial Reference

Legend

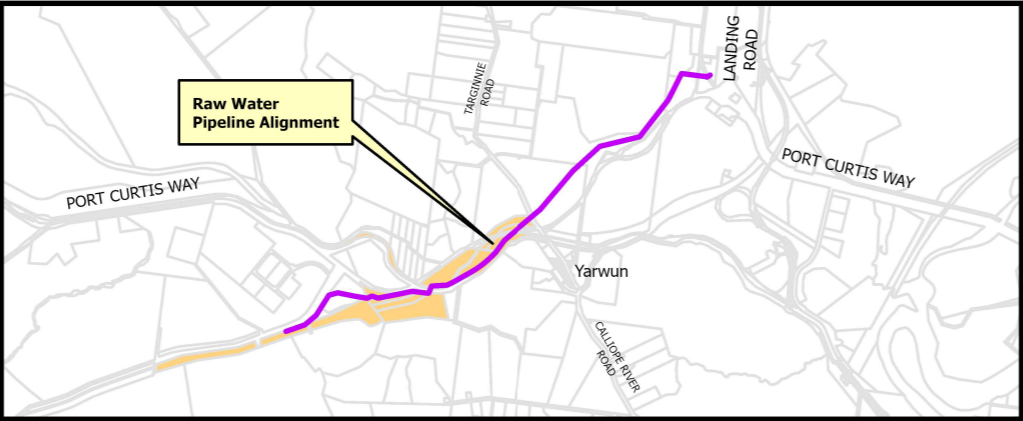
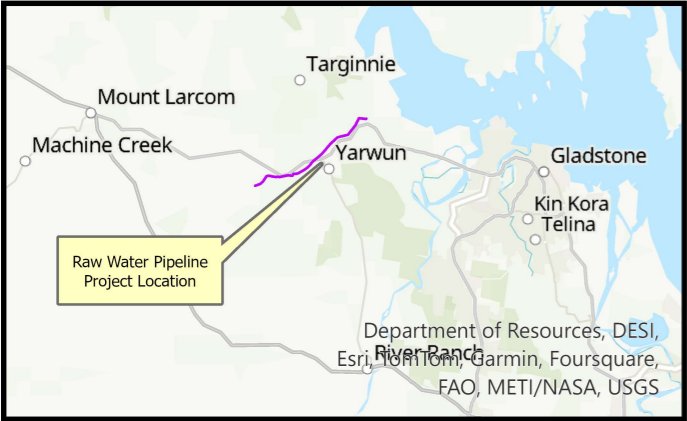
- Lot 21 on SP115224
- East End Raw Water Pipeline
- Easement
- Property Boundary

PLANS AND DOCUMENTS referred to in the SDA APPROVAL



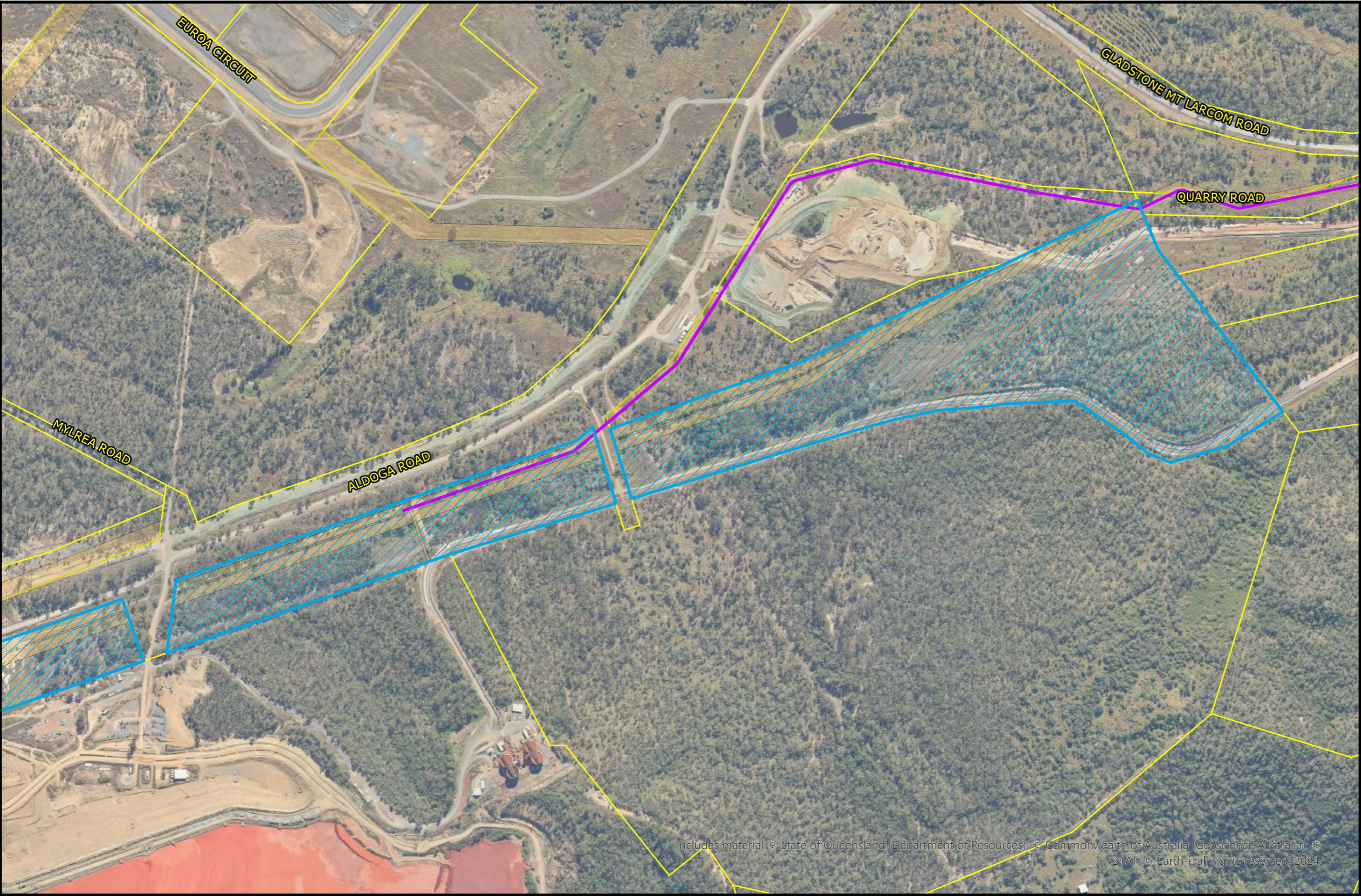
SDA approval: AP2024/014

Includes material © State of Queensland (Department of Resources), © Commonwealth of Australia (Geoscience Australia), © 21AT, © Earth, all rights reserved, 2024.

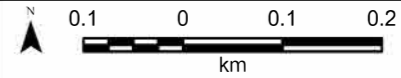


PROPERTY DETAILS	
LAND OWNER	Gladstone Ports Corporation Limited
LOCAL GOVERNMENT	Gladstone Regional Council

PROJECTION UTM ZONE 56
(Datum GDA2020)







**EAST END RAW WATER PIPELINE PROJECT
FIGURE 9 : LAND SUBJECT TO LAND
OWNERS REQUEST
LOT 7 ON SP177782**



Spatial Reference

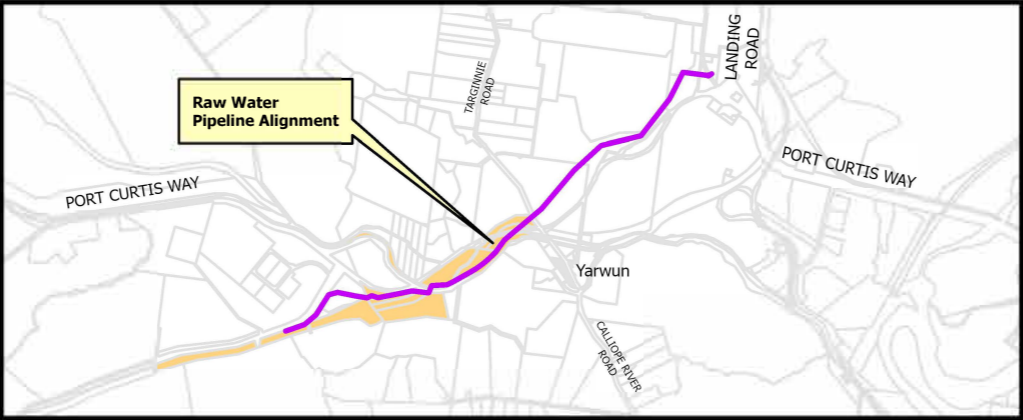
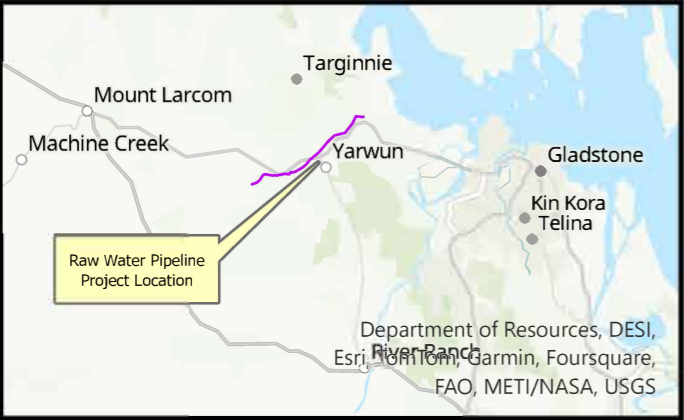
Legend

-  Lot 7 on SP177782
-  East End Raw Water Pipeline
-  Easement
-  Property Boundary

**PLANS AND DOCUMENTS
referred to in the
SDA APPROVAL**

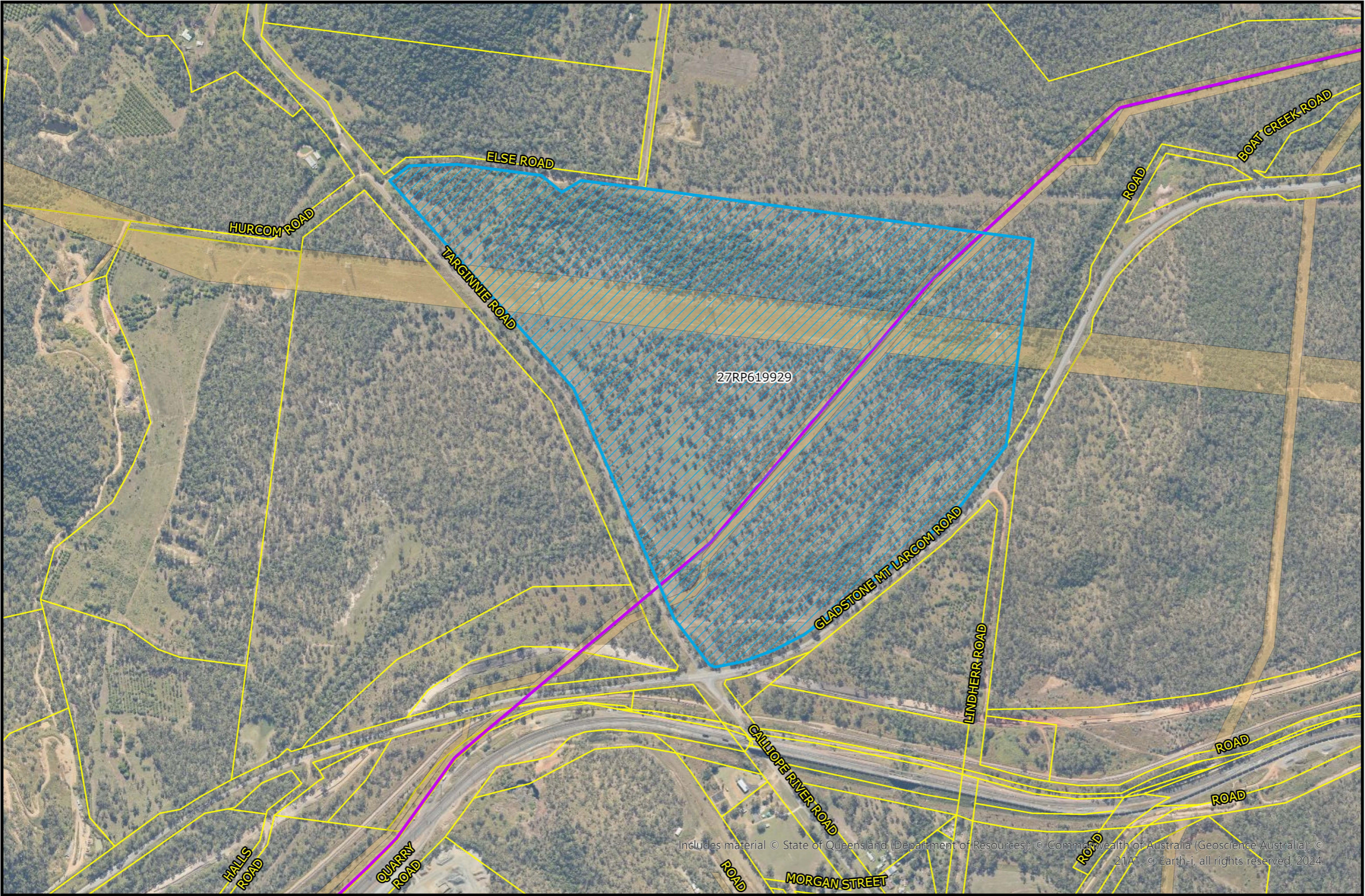


SDA approval: AP2024/014

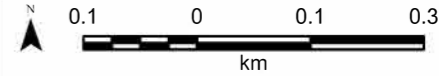


PROPERTY DETAILS	
LAND OWNER	Gladstone Ports Corporation Limited
LOCAL GOVERNMENT	Gladstone Regional Council

**PROJECTION UTM ZONE 56
(Datum GDA2020)**



**EAST END RAW WATER PIPELINE PROJECT
FIGURE 10 : LAND SUBJECT TO LAND
OWNERS REQUEST
LOT 27 ON RP619929**



Spatial Reference

Legend

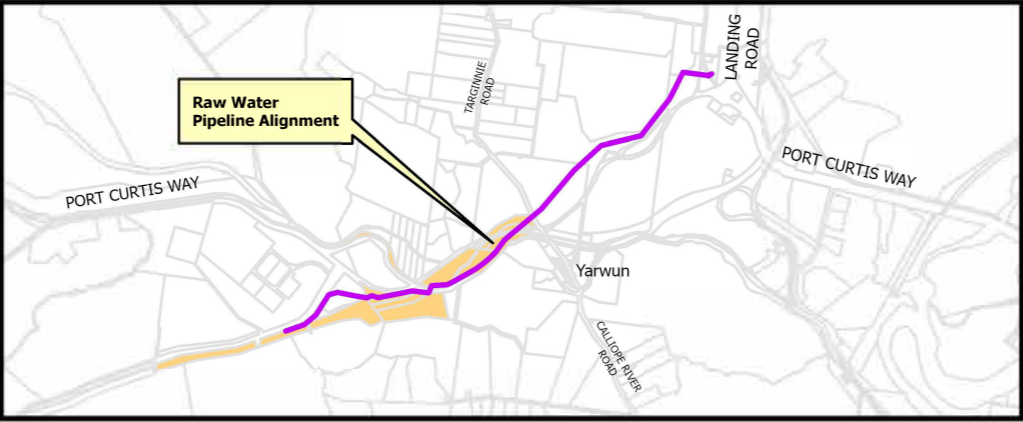
- Lot 27 on RP619929
- East End Raw Water Pipeline
- Easement
- Property Boundary

PLANS AND DOCUMENTS
referred to in the
SDA APPROVAL



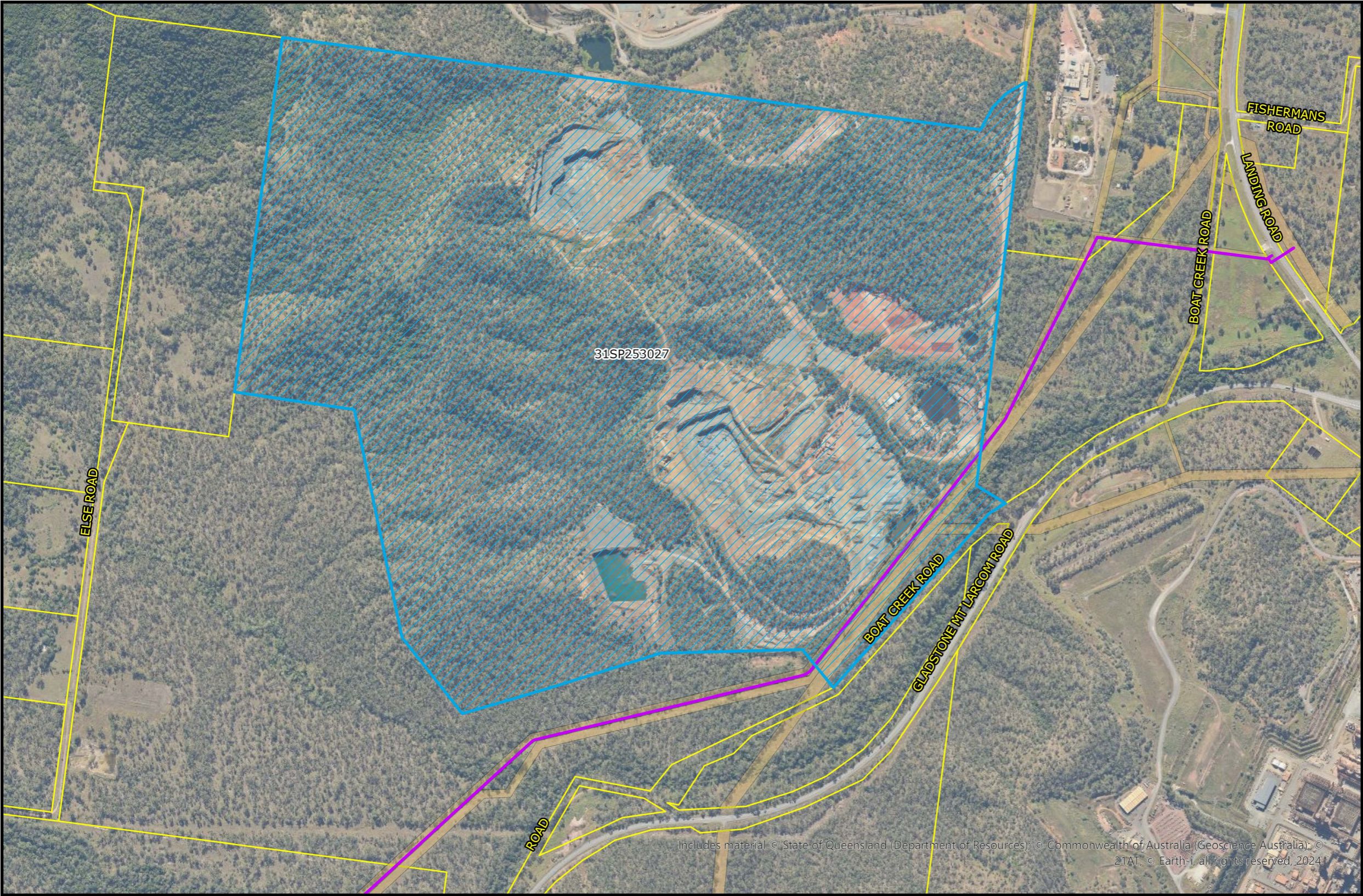
SDA approval: AP2024/014

Includes material © State of Queensland (Department of Resources); © Commonwealth of Australia (Geoscience Australia); © 2024. © Earth-i, all rights reserved, 2024.

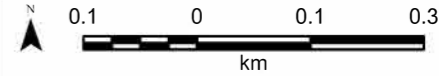


PROPERTY DETAILS	
LAND OWNER	Office of Coordinator General
LOCAL GOVERNMENT	Gladstone Regional Council

**PROJECTION UTM ZONE 56
(Datum GDA2020)**



**EAST END RAW WATER PIPELINE PROJECT
FIGURE 11 : LAND SUBJECT TO LAND
OWNERS REQUEST
LOT 31 ON SP253027**



Spatial Reference

Legend

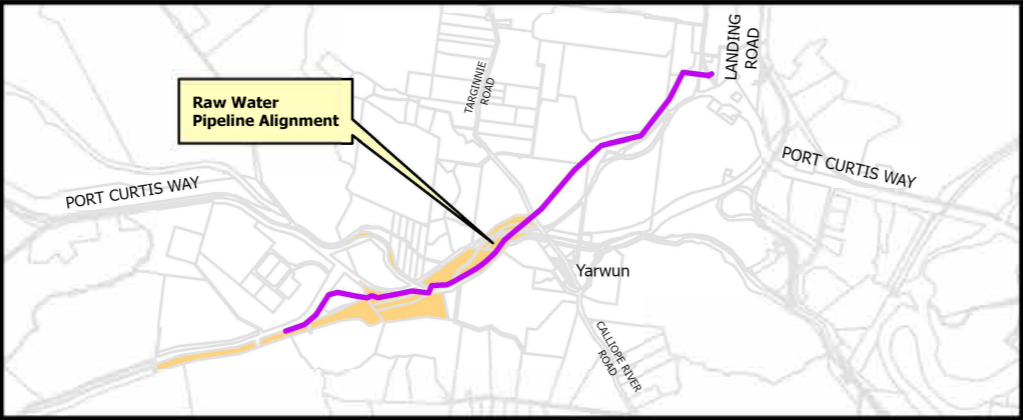
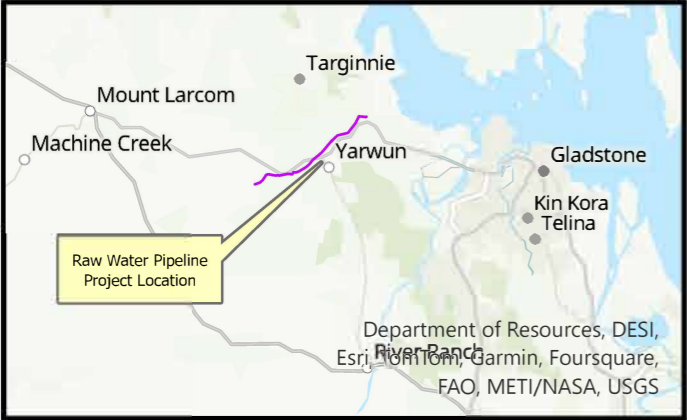
- Lot 31 on SP253027
- East End Raw Water Pipeline
- Easement
- Property Boundary

PLANS AND DOCUMENTS
referred to in the
SDA APPROVAL



SDA approval: AP2024/014

Includes material © State of Queensland (Department of Resources); © Commonwealth of Australia (Geoscience Australia); © 21AT; © Earth-i, all rights reserved, 2024.

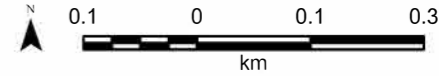


PROPERTY DETAILS	
LAND OWNER	Butlers Yarwun Quarry
LOCAL GOVERNMENT	Gladstone Regional Council

**PROJECTION UTM ZONE 56
(Datum GDA2020)**



EAST END RAW WATER PIPELINE PROJECT
FIGURE 12 : LAND SUBJECT TO LAND OWNERS REQUEST
LOT 32 ON SP253027



Spatial Reference

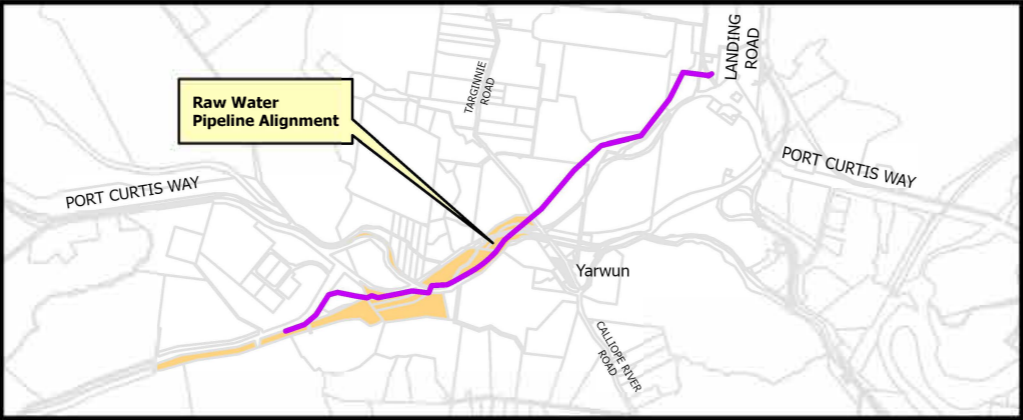
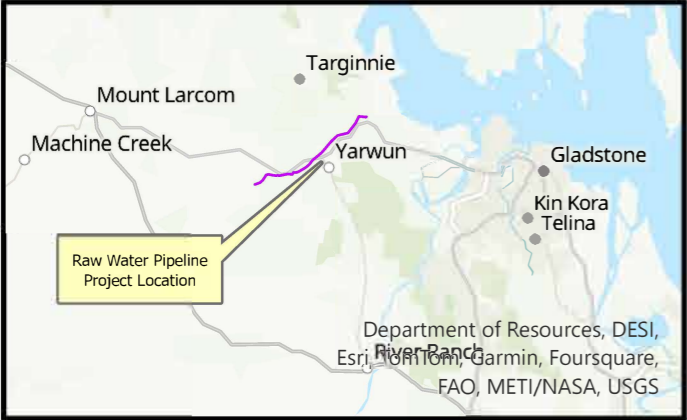
Legend

- Lot 32 on SP253027
- East End Raw Water Pipeline
- Easement
- Property Boundary

PLANS AND DOCUMENTS referred to in the SDA APPROVAL

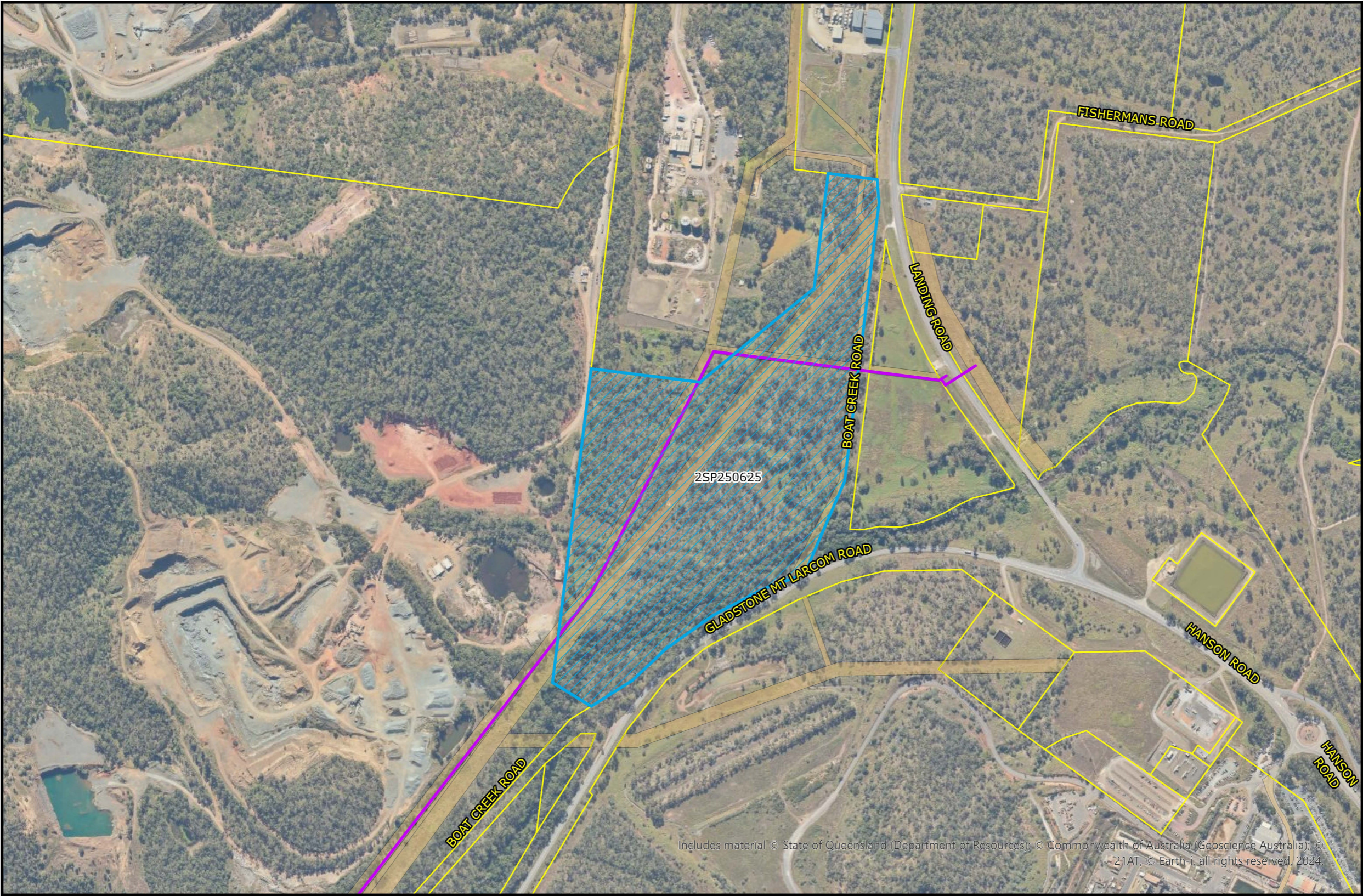


SDA approval: AP2024/014

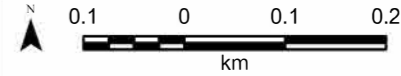


PROPERTY DETAILS	
LAND OWNER	Butler Yarwun Quarry
LOCAL GOVERNMENT	Gladstone Regional Council

PROJECTION UTM ZONE 56
(Datum GDA2020)



EAST END RAW WATER PIPELINE PROJECT
FIGURE 13 : LAND SUBJECT TO LAND
OWNERS REQUEST
LOT 2 ON SP250625



Spatial Reference

Legend

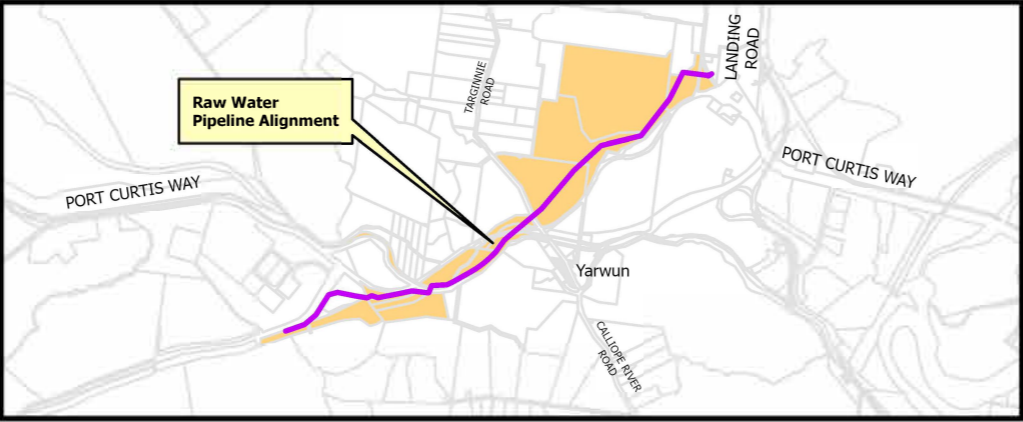
- East End Raw Water Pipeline
- Easement
- Property Boundary
- Lot 2 on SP250625

PLANS AND DOCUMENTS
referred to in the
SDA APPROVAL



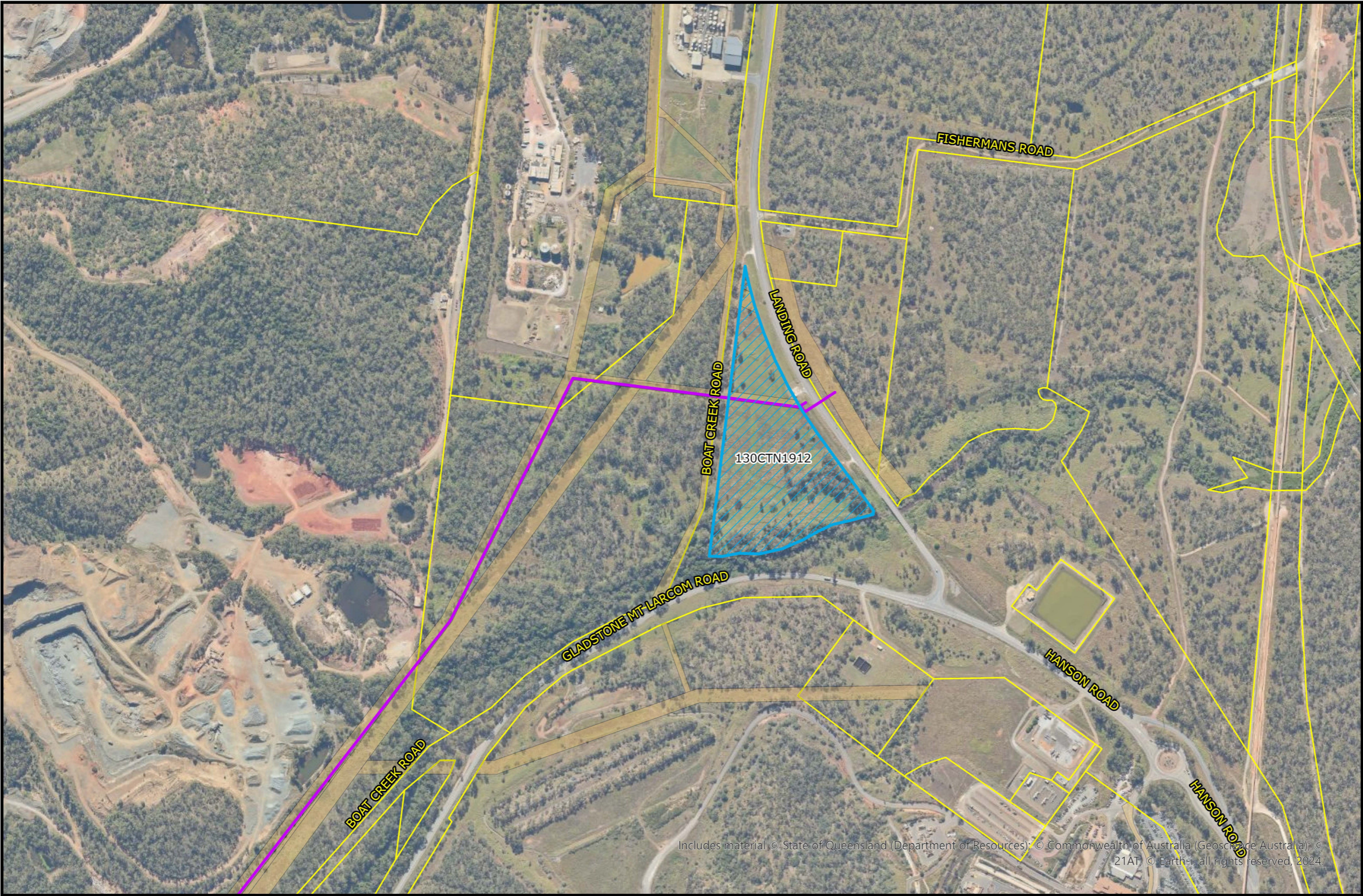
SDA approval: AP2024/014

Includes material © State of Queensland (Department of Resources); © Commonwealth of Australia (Geoscience Australia); © 21AT, © Earth-i, all rights reserved, 2024.

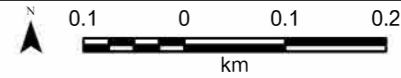


PROPERTY DETAILS	
LAND OWNER	Economic Development Queensland (EDQ)
LOCAL GOVERNMENT	Gladstone Regional Council

PROJECTION UTM ZONE 56
(Datum GDA2020)



EAST END RAW WATER PIPELINE PROJECT
FIGURE 14 : LAND SUBJECT TO LAND OWNERS REQUEST
LOT 130 ON CTN1912



Spatial Reference

Legend

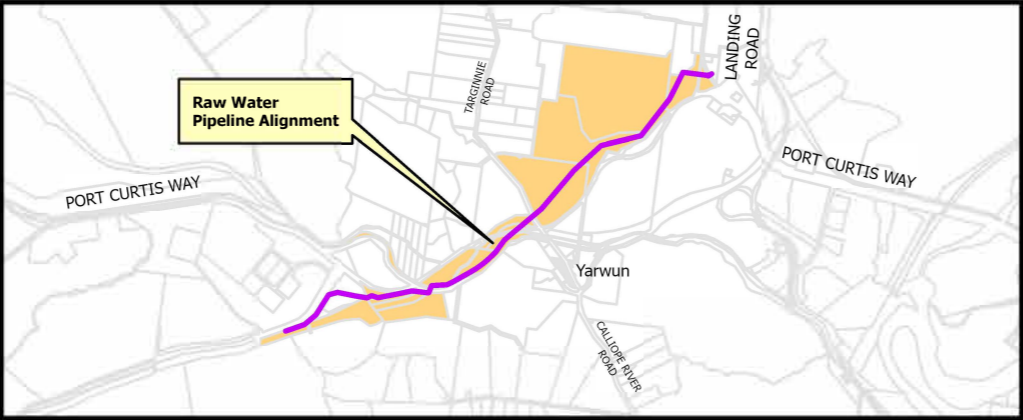
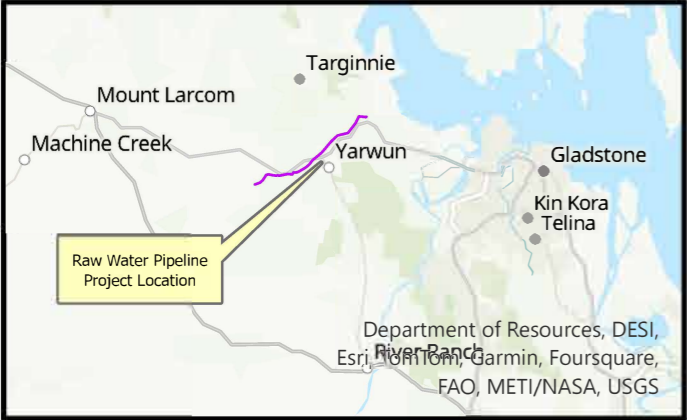
- East End Raw Water Pipeline
- Easement
- Property Boundary
- Lot 130 on CTN1912

PLANS AND DOCUMENTS referred to in the SDA APPROVAL



SDA approval: AP2024/014

Includes material © State of Queensland (Department of Resources); © Commonwealth of Australia (Geoscience Australia); © 21AT; © Earth-i; all rights reserved, 2024.



PROPERTY DETAILS	
LAND OWNER	Economic Development Queensland (EDQ)
LOCAL GOVERNMENT	Gladstone Regional Council

PROJECTION UTM ZONE 56
(Datum GDA2020)