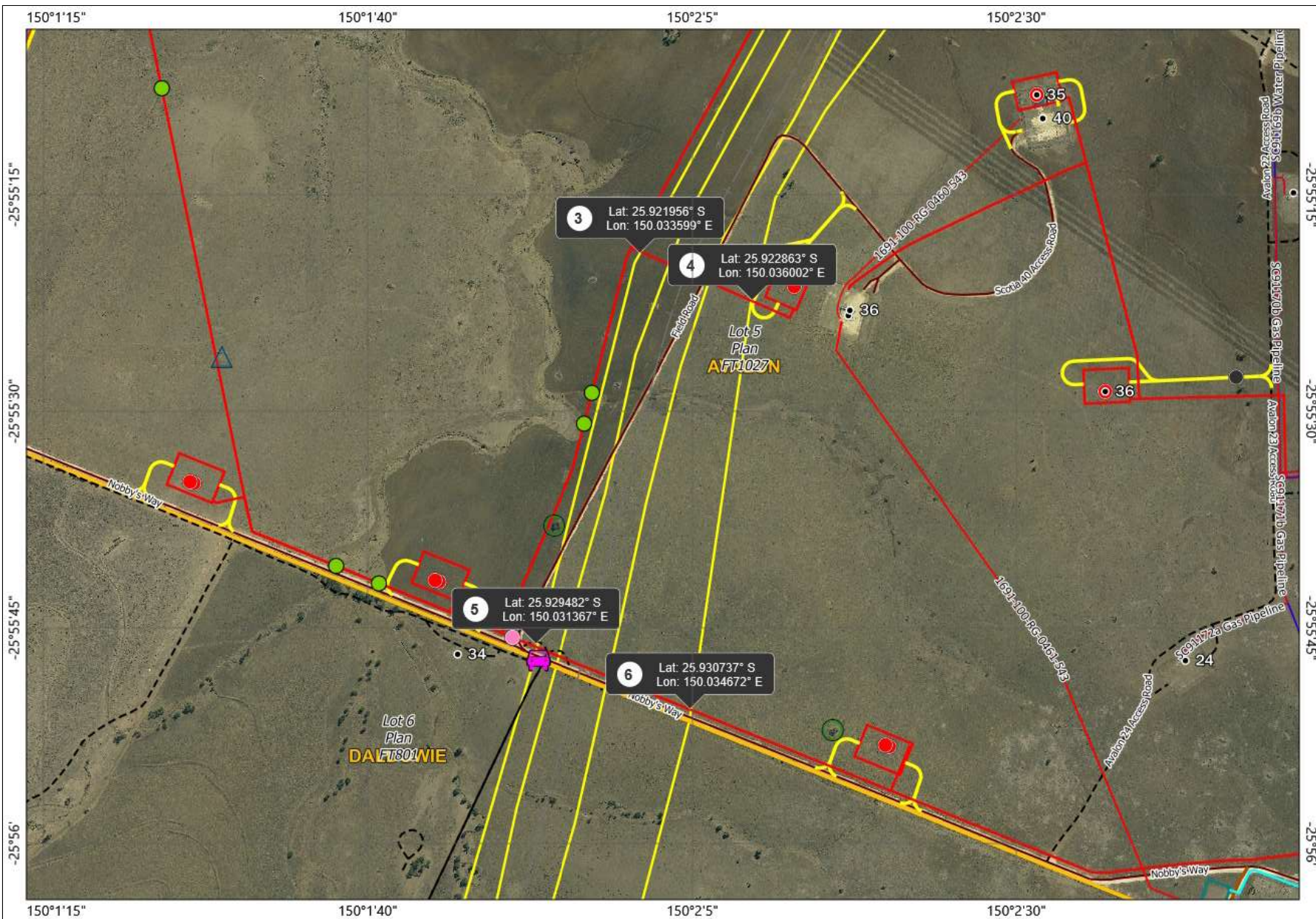
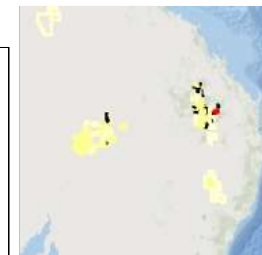
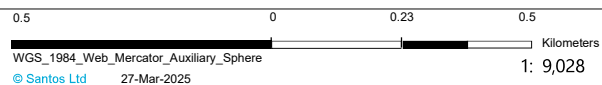


## Avalon -5FT1027

## Overview



Notes  
Add Notes



\* Certain information in this map is provided under license from third parties and is subject to intellectual property rights. Santos has made every effort to ensure that information is accurate and up-to-date but does not guarantee or warrant the accuracy, completeness or currency of, and takes no responsibility for any error or omission relating to, this map. Santos and its related bodies corporate accept no responsibility for any errors or omissions. The "User" acknowledges that information and maps are in a constant state of change and accepts all limitations. To the maximum extent permitted by law, Santos and its related bodies corporate will not be liable for any cost, loss or damage arising out of the use of this map."



# Avalon -5FT1027

- Wells
  - Well
- Scouted Points
  - Crossing - Flowline Watercourse
  - Entry Point
  - Fence Detail
  - Gravel
  - Vegetation to Avoid
  - Vegetation to Relocate
  - Well Centre
- Scouted Lines
  - Access Road Existing Upgrade Required
  - Access Road New
  - Access Road Temporary
  - Flowline - Gas (may also include water and/or power)
  - Flowline - Water (may also include water and/or power)
  - Powerline - Underground
- Scouted Regions
  - Other
  - Surface Klt Location
  - Well Pad
- Pipelines
  - Pipeline - Gas
  - Pipeline - Water
- Railways
  - Railway Line - Proposed
- Roads
  - Road - Sealed
  - Road - Unsealed
  - Track
  - Road - Rehabilitated
- Properties Old
  - Properties Old
- Cadastral Old LGA
  - DCDB - Local Government Authority
- Cadastral Old Easements
  - DCDB - Easement
- Tenements Santos
  - Production Licence
- Infrastructure Corridors
  - Infrastructure Corridor

Page 2

© Santos Ltd 27-Mar-2025

\*Certain information in this map is provided under license from third parties and is subject to change without notice. Santos has made every effort to ensure that information is accurate and up-to-date but does not guarantee or warrant the accuracy, completeness or reliability of the information. Santos and its related bodies corporate will not be liable for any cost, loss or damage arising out of the use of this map.