

Certain information in this map is provided under license from third parties and is subject to intellectual property rights. Santos has made every effort to ensure that information is accurate and up-to-date but does not guarantee or warrant the accuracy, completeness or currency of, and takes no responsibility for any error or omission relating to, this map. Santos and its related bodies corporate accept no responsibility for any errors or omissions. The "User" acknowledges that information and maps are in a constant state of change and accepts all limitations. To the maximum extent permitted by law, Santos and its related bodies corporate will not be liable for any cost, loss or damage arising out of the use of this map.



Legend

- Flowline - Gas; Water, Powerline - Underground
- Property boundary
- Cadastral parcel
- Surat Basin Infrastructure Corridor State Development Area (SBICSDA)
- Santos Tenement

PLANS AND DOCUMENTS
referred to in the
SDA APPROVAL



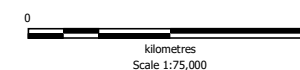
SDA approval: AP2025/001

Santos
GLNG

Eastern Queensland

Scotia

SBICSDA Crossing & Intersection Points



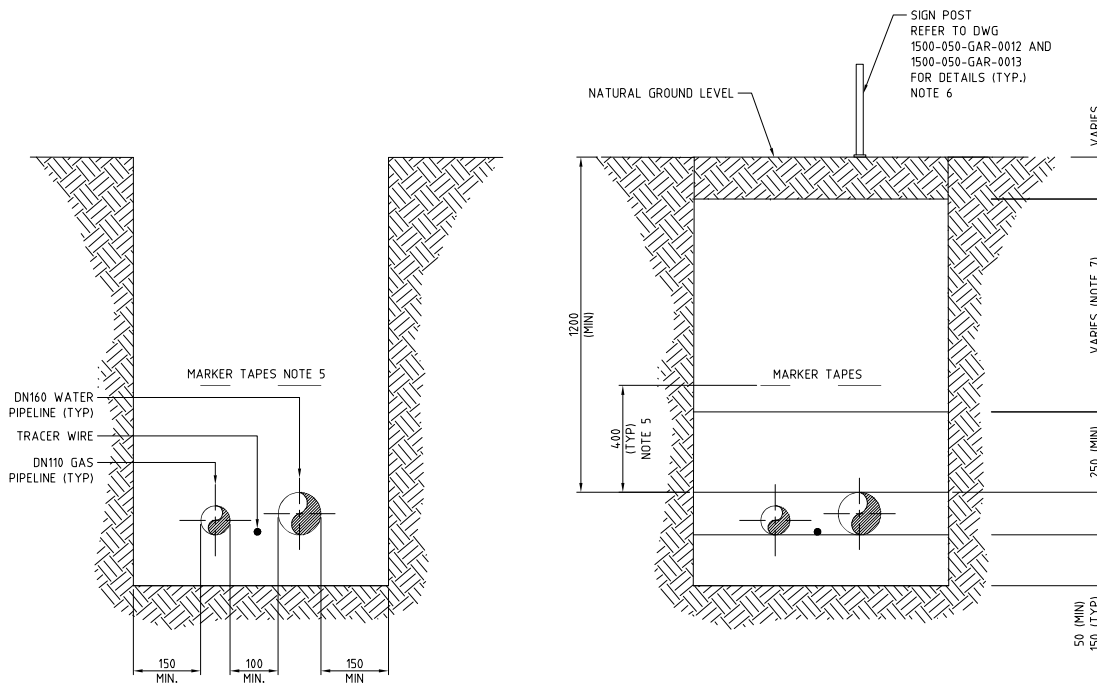
Rev 1

Date: 1/04/2025

File No. SCOTIA 201.WOR



© COPYRIGHT THIS DRAWING CONTAINS CONFIDENTIAL AND PROPRIETARY INFORMATION THAT CANNOT BE REPRODUCED OR DIVULGED IN WHOLE OR IN PART, WITH OUT WRITTEN AUTHORIZATION FROM SANTOS GLNG PTY. LTD.



LAYER	MATERIAL	REF NOT												
TOP SOIL	ORIGINAL MATERIAL OR IMPORTED MATERIAL OF EQUAL QUALITY	9												
BACKFILL	RESTORE TO ORIGINAL CONDITION USING EXCAVATED MATERIAL WITH: - ROCK TO 150mm - CLAY TO 100mm ROCK BACKFILL SHALL ONLY BE USED WHERE THERE IS SUFFICIENT SOFT SPOIL TO FILL THE VOIDS BETWEEN THE ROCK PIECES.	8												
PADDING	MATERIALS EXCAVATED FROM TRENCH, FREE OF ROCKS OR STONES THAT MAY DAMAGE THE PIPE OR CABLES AND COMPLYING TO THE BELOW: <table><tr><th>SIZE (mm)</th><th>% PASSING</th></tr><tr><td>20</td><td>100</td></tr><tr><td>13.2</td><td>88</td></tr><tr><td>4.75</td><td>75</td></tr><tr><td>2.6</td><td>50</td></tr><tr><td>0.6</td><td>30</td></tr></table>	SIZE (mm)	% PASSING	20	100	13.2	88	4.75	75	2.6	50	0.6	30	8
SIZE (mm)	% PASSING													
20	100													
13.2	88													
4.75	75													
2.6	50													
0.6	30													
PADDING	NO VOIDS ARE TO BE LEFT UNDER OR AROUND THE PIPE.													
BEDDING	MATERIAL AS ABOVE. SAND BAGS TO BE USED AS REQUIRED TO PREVENT DAMAGE TO PIPES AND CABLES, SUCH AS WHEN INSTALLED IN A ROCK CUT.	8												

NOTES:

- ALL DIMENSIONS IN mm.
- PIPELINE CONSTRUCTION INCLUDING TRENCHING, INSTALLATION, BACKFILL AND COMPACTION TO COMPLY WITH APGA CODE OF PRACTICE AND SANTOS EXCAVATION PROCEDURES SMS-HSS-0502-PD02.
- ARRANGEMENT SHOWN IS TYPICAL, ALTERNATE TRENCH ARRANGEMENTS MAY BE INSTALLED, PROVIDED THEY MEET THE SEPARATION REQUIREMENTS SPECIFIED IN 1500-040-SEC-0001.
- ORDER OF PREFERENCE FOR INCREASED SEPARATION DISTANCE BETWEEN SERVICES:
 - POWER CABLE AND OTHER SERVICES
 - PIPELINE AND TRENCH WALL
 - PIPELINES
- MARKER TAPE DESIGN SHALL COMPLY WITH AS 2648 REQUIREMENTS, TO BE INSTALLED AT:
 - NO LESS THAN 400mm ABOVE THE PIPE/CABLE TO A MAXIMUM OF 900mm ABOVE THE PIPE/CABLE.
 - NO LESS THAN 300mm BELOW GRADE.
- MARKER SIGNS ARE TO BE INSTALLED AT INTERVALS COMPLYING WITH APGA CODE OF PRACTICE.
- DEPTH OF BACKFILL TO BE SITE DETERMINED BASED ON DEPTH OF TOP SOIL AND DEPTH OF COVER.
- BACKFILL SHALL BE PLACED AND COMPACTED IN SUCH A WAY THAT ENSURES NO DAMAGE IS DONE TO THE PIPES OR CABLES AND NO VOIDS ARE LEFT AROUND THE PIPE.
- BACKFILL SHALL BE COMPACTED MECHANICALLY OR BY 3 PASSES OF A 5 TONNE VEHICLE, ROLLING TO A DENSITY THAT ACHIEVES SETTLEMENT IN THE TRENCH THAT DOES NOT RESULT IN THE SURFACE OVER THE TRENCH SUBSIDING.
- GATHERING NETWORK CONSTRUCTION TO BE UNDERTAKEN PRIOR TO CONSTRUCTION OF THE PROPOSED RAILWAY CROSSING
- THE PIPELINE SHALL BE INSTALLED LEVEL AND STRAIGHT ACROSS THE RAILWAY EASEMENT SHOWN. CROSSING ANGLE TO BE AS PER ALIGNMENT SHEETS AND AT 90 DEGREES +/- 5 DEGREES.
- METHOD OF CONSTRUCTION FOR THE PROPOSED RAILWAY CROSSING SHALL BE OPEN TRENCH AS PER SANTOS APPROVED PROCEDURES.
- THE PURPOSE OF THIS DRAWING IS ONLY TO SHOW THE EXTENT OF THE CROSSING BETWEEN THE GATHERING AND PROPOSED RAILWAY EASEMENT. IT IS NOT ENGINEERED AS A PROPER RAILWAY CROSSING. THE GATHERING SECTION THAT FALLS WITHIN THE BOUNDS OF THE RAILWAY EASEMENT SHALL BE BUILT IN ACCORDANCE WITH AS4799 AND QUEENSLAND RAIL'S STANDARDS SHOULD THE RAILWAY BE APPROVED.

HOLD:

- PENDING PIPELINE KEY PLAN DOCUMENT NUMBERS.

PLANS AND DOCUMENTS
referred to in the
SDA APPROVAL



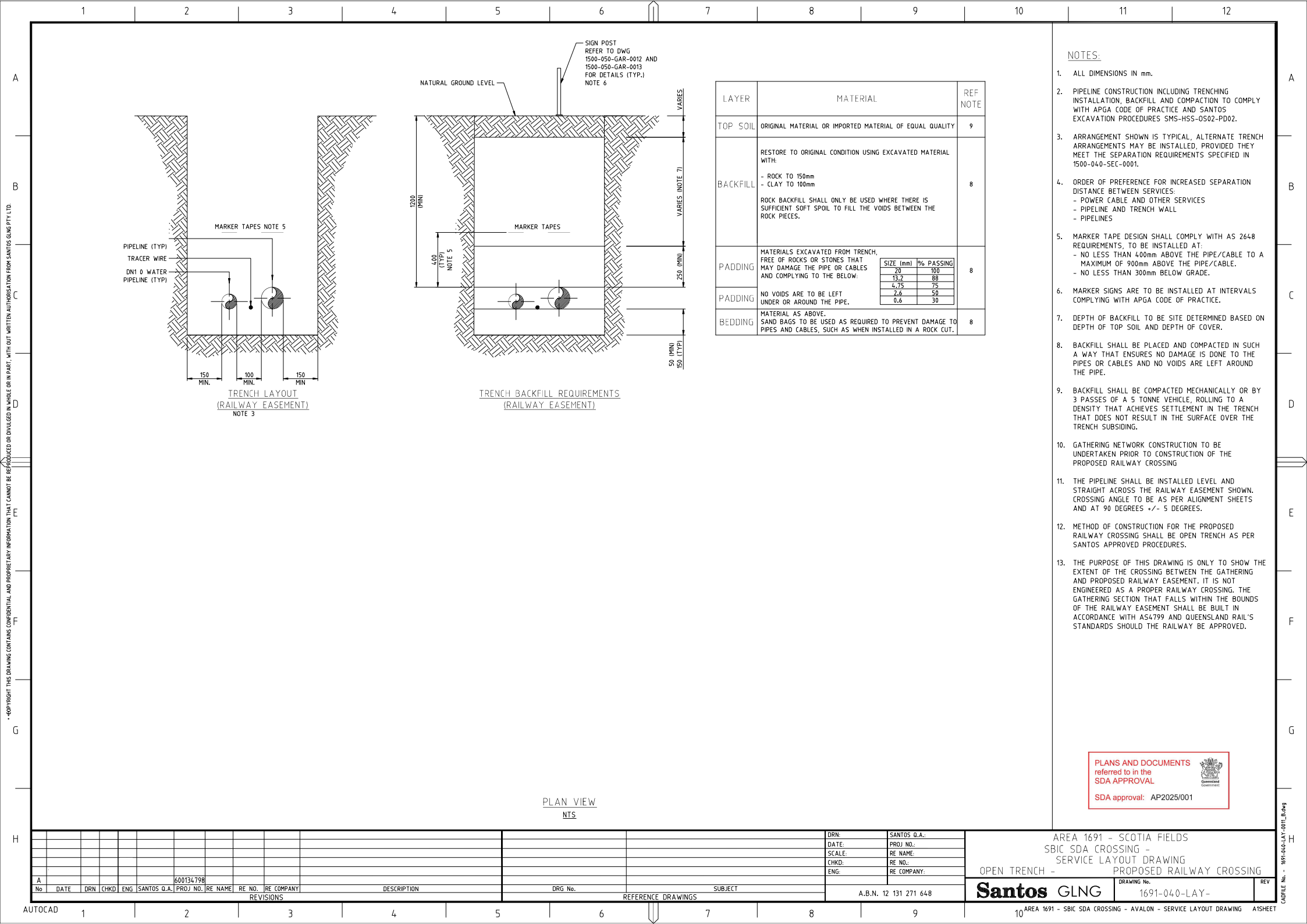
SDA approval: AP2025/0C1



PLAN VIEW
NTS

																																																																																																																																																																																																																																																																																																																																																																																																																																																																																																																																																																																																																																																																																																																																																																																																																																																																																																																																																																																																																																																																																																																																																																																																																																																																																																																																																																																																																					</
--	--	--	--	--	--	--	--	--	--	--	--	--	--	--	--	--	--	--	--	--	--	--	--	--	--	--	--	--	--	--	--	--	--	--	--	--	--	--	--	--	--	--	--	--	--	--	--	--	--	--	--	--	--	--	--	--	--	--	--	--	--	--	--	--	--	--	--	--	--	--	--	--	--	--	--	--	--	--	--	--	--	--	--	--	--	--	--	--	--	--	--	--	--	--	--	--	--	--	--	--	--	--	--	--	--	--	--	--	--	--	--	--	--	--	--	--	--	--	--	--	--	--	--	--	--	--	--	--	--	--	--	--	--	--	--	--	--	--	--	--	--	--	--	--	--	--	--	--	--	--	--	--	--	--	--	--	--	--	--	--	--	--	--	--	--	--	--	--	--	--	--	--	--	--	--	--	--	--	--	--	--	--	--	--	--	--	--	--	--	--	--	--	--	--	--	--	--	--	--	--	--	--	--	--	--	--	--	--	--	--	--	--	--	--	--	--	--	--	--	--	--	--	--	--	--	--	--	--	--	--	--	--	--	--	--	--	--	--	--	--	--	--	--	--	--	--	--	--	--	--	--	--	--	--	--	--	--	--	--	--	--	--	--	--	--	--	--	--	--	--	--	--	--	--	--	--	--	--	--	--	--	--	--	--	--	--	--	--	--	--	--	--	--	--	--	--	--	--	--	--	--	--	--	--	--	--	--	--	--	--	--	--	--	--	--	--	--	--	--	--	--	--	--	--	--	--	--	--	--	--	--	--	--	--	--	--	--	--	--	--	--	--	--	--	--	--	--	--	--	--	--	--	--	--	--	--	--	--	--	--	--	--	--	--	--	--	--	--	--	--	--	--	--	--	--	--	--	--	--	--	--	--	--	--	--	--	--	--	--	--	--	--	--	--	--	--	--	--	--	--	--	--	--	--	--	--	--	--	--	--	--	--	--	--	--	--	--	--	--	--	--	--	--	--	--	--	--	--	--	--	--	--	--	--	--	--	--	--	--	--	--	--	--	--	--	--	--	--	--	--	--	--	--	--	--	--	--	--	--	--	--	--	--	--	--	--	--	--	--	--	--	--	--	--	--	--	--	--	--	--	--	--	--	--	--	--	--	--	--	--	--	--	--	--	--	--	--	--	--	--	--	--	--	--	--	--	--	--	--	--	--	--	--	--	--	--	--	--	--	--	--	--	--	--	--	--	--	--	--	--	--	--	--	--	--	--	--	--	--	--	--	--	--	--	--	--	--	--	--	--	--	--	--	--	--	--	--	--	--	--	--	--	--	--	--	--	--	--	--	--	--	--	--	--	--	--	--	--	--	--	--	--	--	--	--	--	--	--	--	--	--	--	--	--	--	--	--	--	--	--	--	--	--	--	--	--	--	--	--	--	--	--	--	--	--	--	--	--	--	--	--	--	--	--	--	--	--	--	--	--	--	--	--	--	--	--	--	--	--	--	--	--	--	--	--	--	--	--	--	--	--	--	--	--	--	--	--	--	--	--	--	--	--	--	--	--	--	--	--	--	--	--	--	--	--	--	--	--	--	--	--	--	--	--	--	--	--	--	--	--	--	--	--	--	--	--	--	--	--	--	--	--	--	--	--	--	--	--	--	--	--	--	--	--	--	--	--	--	--	--	--	--	--	--	--	--	--	--	--	--	--	--	--	--	--	--	--	--	--	--	--	--	--	--	--	--	--	--	--	--	--	--	--	--	--	--	--	--	--	--	--	--	--	--	--	--	--	--	--	--	--	--	--	--	--	--	--	--	--	--	--	--	--	--	--	--	--	--	--	--	--	--	--	--	--	--	--	--	--	--	--	--	--	--	--	--	--	--	--	--	--	--	--	--	--	--	--	--	--	--	--	--	--	--	--	--	--	--	--	--	--	--	--	--	--	--	--	--	--	--	--	--	--	--	--	--	--	--	--	--	--	--	--	--	--	--	--	--	--	--	--	--	--	--	--	--	--	--	--	--	--	--	--	--	--	--	--	--	--	--	--	--	--	--	--	--	--	--	--	--	--	--	--	--	--	--	--	--	--	--	--	--	--	--	--	--	--	--	--	--	--	--	--	--	--	--	--	--	--	--	--	--	--	--	--	--	--	--	--	--	--	--	--	--	--	--	--	--	--	--	--	--	--	--	--	--	--	--	--	--	--	--	--	--	--	--	--	--	--	--	--	--	--	--	--	--	--	--	--	--	--	--	--	--	--	--	--	--	--	--	--	--	--	--	--	--	--	--	--	--	--	--	--	--	--	--	--	--	--	--	--	--	--	--	--	--	--	--	--	--	--	--	--	--	--	--	--	--	--	--	--	--	--	--	--	--	--	--	--	--	--	--	--	--	--	--	--	--	--	--	--	--	--	--	--	--	--	--	--	--	--	--	--	--	--	--	--	--	--	--	--	--	--	--	--	--	--	--	--	--	--	--	--	--	--	--	--	--	--	--	--	--	--	--	--	--	--	--	--	--	--	--	--	--	--	--	--	--	--	--	--	--	--	--	--	--	--	--	--	--	--	--	--	--	--	--	--	--	--	--	--	--	--	--	--	--	--	--	--	--	--	--	--	--	--	--	--	--	--	--	--	--	--	--	--	--	--	--	--	--	--	--	--	--	--	--	--	--	--	--	--	--	--	--	--	--	--	--	--	--	--	--	--	--	--	--	--	--	--	--	--	--	--	--	--	--	--	--	--	--	--	--	--	--	--	--	--	--	--	--	--	--	--	--	--	--	--	--	--	--	--	--	--	--	--	--	--	--	--	--	--	--	--	--	--	--	--	--	--	--	--	--	--	--	--	--	--	--	--	--	--	--	--	--	--	--	--	--	--	--	--	--	--	--	--	--	--	--	--	--	--	--	--	--	--	--	--	--	--	--	--	--	--	--	--	--	--	--	--	--	--	--	--	--	--	--	--	--	--	--	--	--	--	--	--	--	--	--	--	--	--	--	--	--	--	--	--	--	--	--	--	--	--	--	--	--	--	--	--	--	--	--	--	--	--	--	--	--	--	--	--	--	--	--	--	--	--	--	--	--	--	--	--	--	--	--	--	--	--	--	--	--	--	--	--	--	--	--	--	--	--	--	--	--	----

AREA 1691 - SCOTIA FIELDS	
SBIC SDA CROSSING - KELSALL	
SERVICE LAYOUT DRAWING	
OPEN TRENCH - SC91-188b PROPOSED RAILWAY CROSSING	
Santos GLNG	DRAWING No. 1691-040-LAY-0011
AREA 1691 - SBIC SDA CROSSING - AVALON - SERVICE LAYOUT DRAWING	A15SHEET





SIZE (mm)	% PASSING
20	100
13.2	88
4.75	75
2.6	50
0.6	30

1. ALL DIMENSIONS IN mm.
2. PIPELINE CONSTRUCTION INCLUDING TRENCHING, INSTALLATION, BACKFILL AND COMPACTION TO COMPLY WITH APGA CODE OF PRACTICE AND SANTOS EXCAVATION PROCEDURES SMS-HSS-0502-PD02.
3. ARRANGEMENT SHOWN IS TYPICAL. ALTERNATE TRENCH ARRANGEMENTS MAY BE INSTALLED, PROVIDED THEY MEET THE SEPARATION REQUIREMENTS SPECIFIED IN 1500-040-SEC-0001.
4. ORDER OF PREFERENCE FOR INCREASED SEPARATION DISTANCE BETWEEN SERVICES:
 - POWER CABLE AND OTHER SERVICES
 - PIPELINE AND TRENCH WALL
 - PIPELINES
5. MARKER TAPE DESIGN SHALL COMPLY WITH AS 2648 REQUIREMENTS, TO BE INSTALLED AT:
 - NO LESS THAN 400mm ABOVE THE PIPE/CABLE TO A MAXIMUM OF 900mm ABOVE THE PIPE/CABLE.
 - NO LESS THAN 300mm BELOW GRADE.
6. MARKER SIGNS ARE TO BE INSTALLED AT INTERVALS COMPLYING WITH APGA CODE OF PRACTICE.
7. DEPTH OF BACKFILL TO BE SITE DETERMINED BASED ON DEPTH OF TOP SOIL AND DEPTH OF COVER.
8. BACKFILL SHALL BE PLACED AND COMPACTED IN SUCH A WAY THAT ENSURES NO DAMAGE IS DONE TO THE PIPES OR CABLES AND NO VOIDS ARE LEFT AROUND THE PIPE.
9. BACKFILL SHALL BE COMPACTED MECHANICALLY OR BY 3 PASSES OF A 5 TONNE VEHICLE, ROLLING TO A DENSITY THAT ACHIEVES SETTLEMENT IN THE TRENCH THAT DOES NOT RESULT IN THE SURFACE OVER THE TRENCH SUBSIDING.
10. GATHERING NETWORK CONSTRUCTION TO BE UNDERTAKEN PRIOR TO CONSTRUCTION OF THE PROPOSED RAILWAY CROSSING
11. THE PIPELINE SHALL BE INSTALLED LEVEL AND STRAIGHT ACROSS THE RAILWAY EASEMENT SHOWN. CROSSING ANGLE TO BE AS PER ALIGNMENT SHEETS AND AT 90 DEGREES +/- 5 DEGREES.
12. METHOD OF CONSTRUCTION FOR THE PROPOSED RAILWAY CROSSING SHALL BE OPEN TRENCH AS PER SANTOS APPROVED PROCEDURES.
13. THE PURPOSE OF THIS DRAWING IS ONLY TO SHOW THE EXTENT OF THE CROSSING BETWEEN THE GATHERING AND PROPOSED RAILWAY EASEMENT. IT IS NOT ENGINEERED AS A PROPER RAILWAY CROSSING. THE GATHERING SECTION THAT FALLS WITHIN THE BOUNDS OF THE RAILWAY EASEMENT SHALL BE BUILT IN ACCORDANCE WITH AS4799 AND QUEENSLAND RAIL'S STANDARDS SHOULD THE RAILWAY BE APPROVED.

1.

Queensland
Government

AREA 1691 - SCOTIA FIELDS
SBIC SDA CROSSING -
SERVICE LAYOUT DRAWING
CH - PROPOSED RAILWAY CROSSING

DRAWING No.	1691-040-LAY-
-------------	---------------

G	ADFILE No. - 1691-040-LAY-0011_B.dwg
REV	