

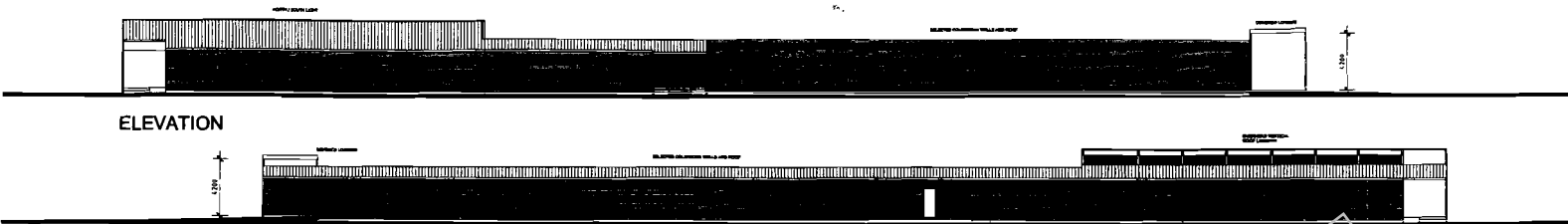
Appendix G Construction Village Architectural Plans

Prepared by

SKM

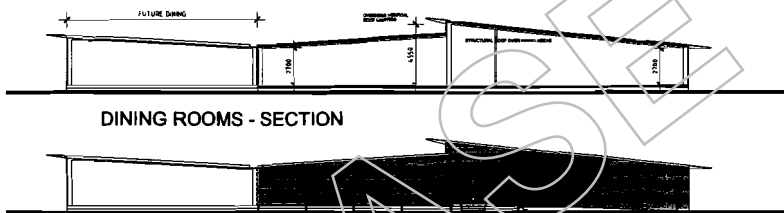
Drawing Series: PHCVM03-7311-AA

Construction Village Architectural Plans			
Reference	Title/Name	Prepared By	Date
DG-0001 Rev E	Kitchen and Dining Building: Plan and Elevations	SKM	May 2010
DG-0002 Rev D	Kitchen and Dining Building: Item Description Table	SKM	May 2010
DG-0003 Rev D	Dining Room: Plan	SKM	May 2010
DG-0004 Rev D	Kitchen and Store: Plan	SKM	May 2010
DG-0005 Rev E	Accommodation Units: Plans and Elevations	SKM	May 2010
DG-0006 Rev F	Village Reception Building and Laundry Unit: Plans and Elevations	SKM	May 2010
DG-0007 Rev F	Wet Mess and Recreation Building: Plan	SKM	May 2010
DG-0008 Rev E	Wet Mess and Recreation Building: Elevations and Sections	SKM	May 2010
DG-0009 Rev F	Training, Linen Stores & Bus Shelter: Plans, Elevations and Sections	SKM	May 2010
DG-0010 Rev E	Maintenance Building and Barbeque Shelter: Plans, Elevations and Sections	SKM	May 2010
DG-0011 Rev E	Gymnasium: Plans, Elevations and Sections	SKM	May 2010
DG-0012 Rev c	Main External Shelter, Main Comms & Gatehouse: Plans, Elevations and Sections	SKM	May 2010



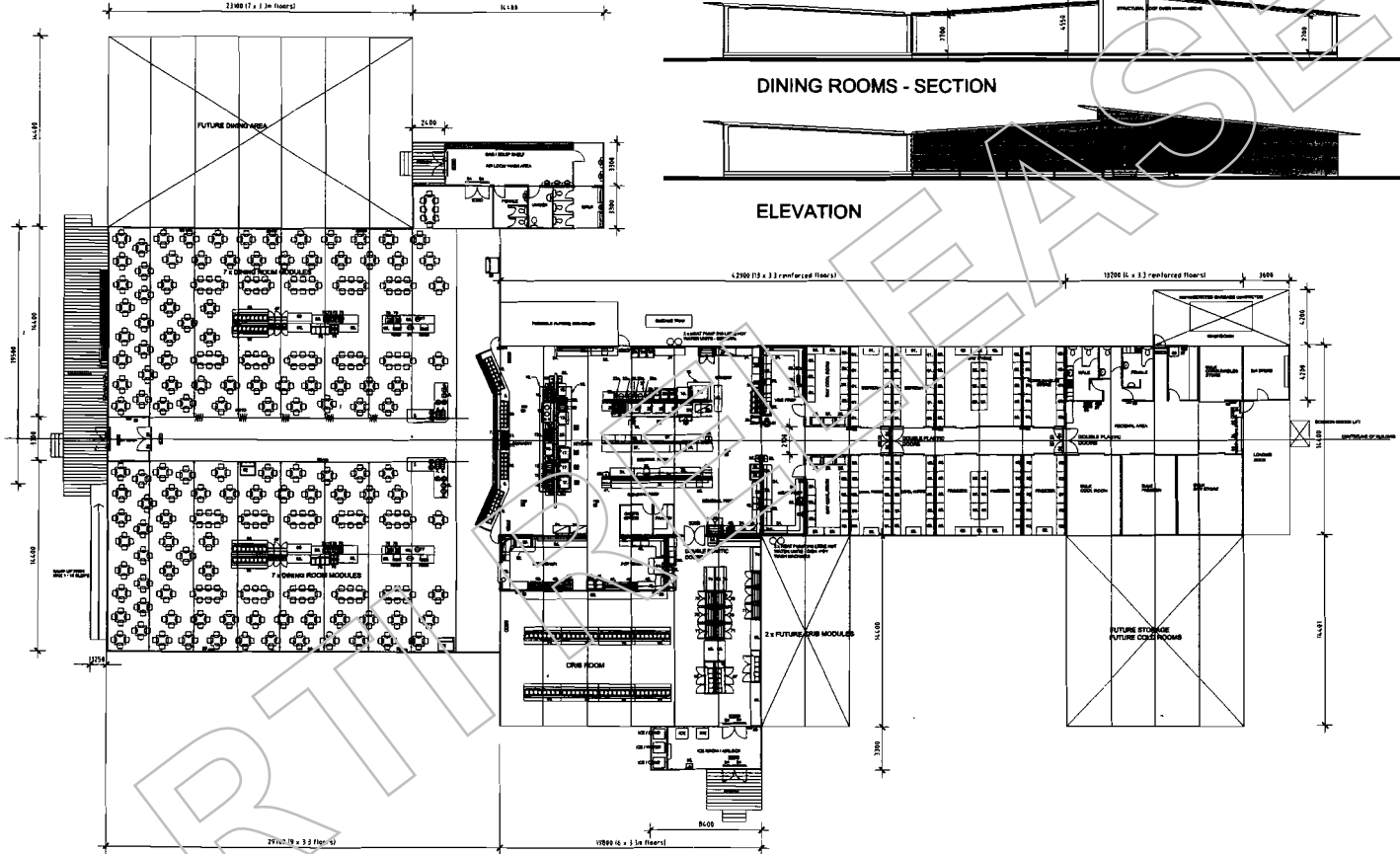
ELEVATION

ELEVATION



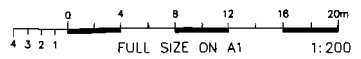
DINING ROOMS - SECTION

ELEVATION



FLOOR PLAN

- FINISHES NOTE**
- ROOF: ZINCALUME SHEETING MINIMUM 2° PITCH
 - WINDOWS: POWDERCOATED ALUMINIUM
 - WALLS: COLORBOND MULTILINE OR EQUIVALENT
 - EXTERNAL DOORS: SOLID CORE WITH PRESSED STEEL FRAME
 - SUB FLOOR BATTENS REQUIRED
 - MINIMUM CEILING HEIGHT TO KITCHEN/DINING = 2700mm
 - MINIMUM CLEARANCE UNDER KITCHEN/DINING = 1000mm
 - HEIGHT OF LOADING DOCK ABOVE PAVEMENT LEVEL = 1300mm



DESIGNED	DESIGNED CHECKED	DRAFTING CHECKED	ENGINEER MANAGER	REVISION CHECKED	REVISION APPROVED
DOC NUMBER	DOCUMENT TITLE				
	REFERENCE DOCUMENTS				

CONSULTANTS

SKM
Sinclair Knight Merz Pty Ltd
A.C.N. 001 024 095
32 Cordelia Street
South Brisbane QLD 4101 Australia
Telephone (07) 3026 7100
Facsimile (07) 3026 7300

REV	DESCRIPTION	BY	CHKD	APP	DATE
E	ISSUE FOR DA	EC	WW		12.04.00
D	ISSUE FOR TENDER REVISED	JS			29.01.00
C	ISSUE FOR TENDER REVISED	MP	FF	FF	27.01.00
B	ISSUE FOR TENDER	JF	JF	JF	30.09.00
A	ISSUE FOR INTERNAL AND CLIENT REVIEW	J.F.	J.F.	J.F.	25.09.00
REV	DESCRIPTION	BY	CHKD	APP	DATE
REVISIONS, ISSUES AND APPROVALS					

SCALE AS SHOWN DATE

DESIGNED JF 24.09.00
CHECKED JF 25.09.00
DRAWN JF 25.09.00
DRAFTING CHECK JF 25.09.00

ENGINEER MANAGER

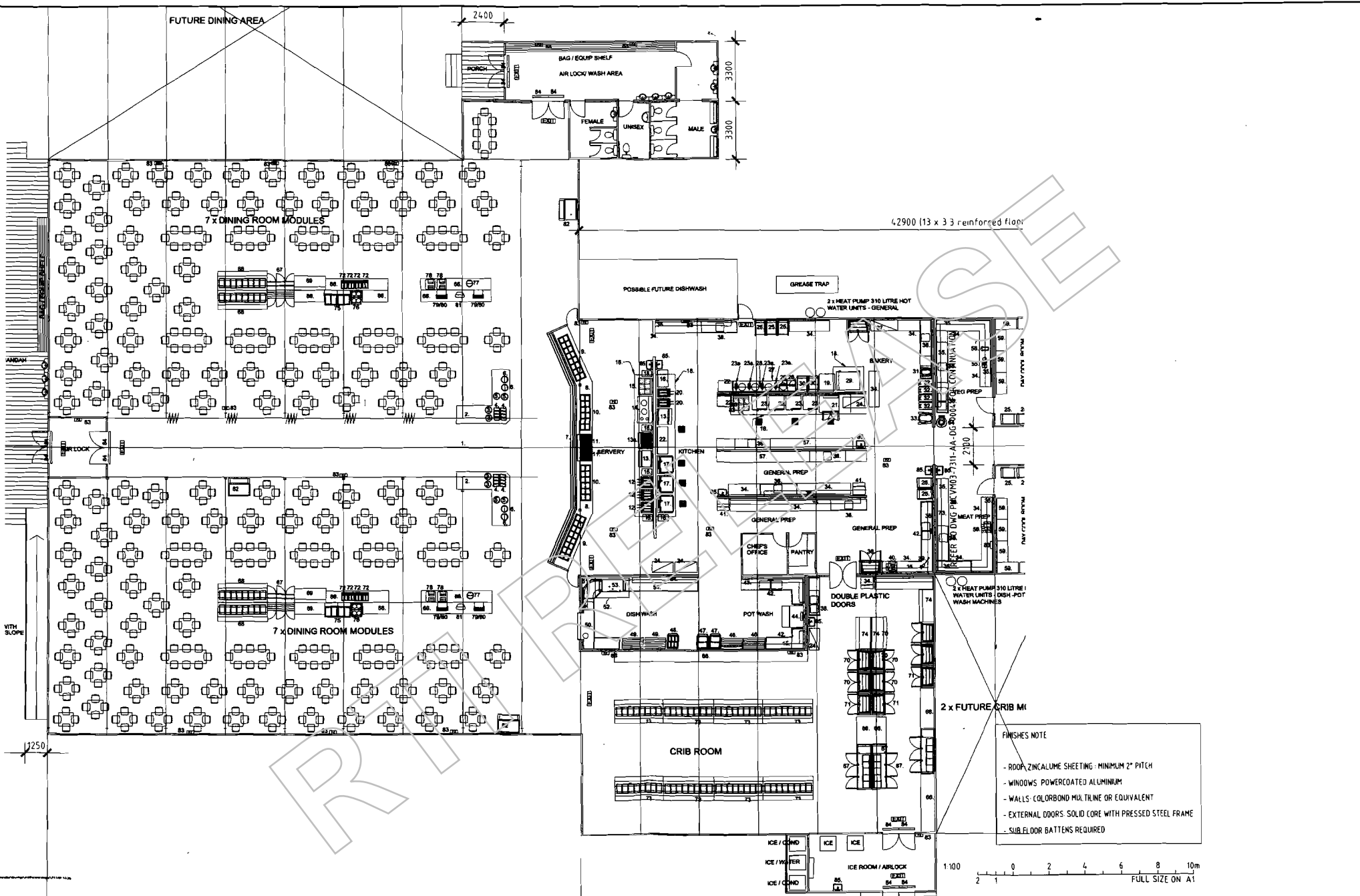
ACAD FILE

BMA
BHP Billiton Mitsubishi Alliance

APPROVAL 1

APPROVAL 2

Caval Ridge Mine	
Buffel Park Construction Village Kitchen and Dining Building Plan and Elevations	
DRAWING NUMBER	A1
PHCYM03-7311-AA-DG-0001	



DESIGNED CHECKED	DRAFTING CHECKED	ENGINEER MANAGER	REVISION CHECKED	REVISION APPROVED
DOCUMENT TITLE				
COMMENTS				

SKM
 Sinclair Knight Merz Pty Ltd
 A.C.N. 001 024 095
 32 Cordelia Street
 South Brisbane QLD 4101 Australia
 Telephone (07) 3026 7100
 Facsimile (07) 3026 7300

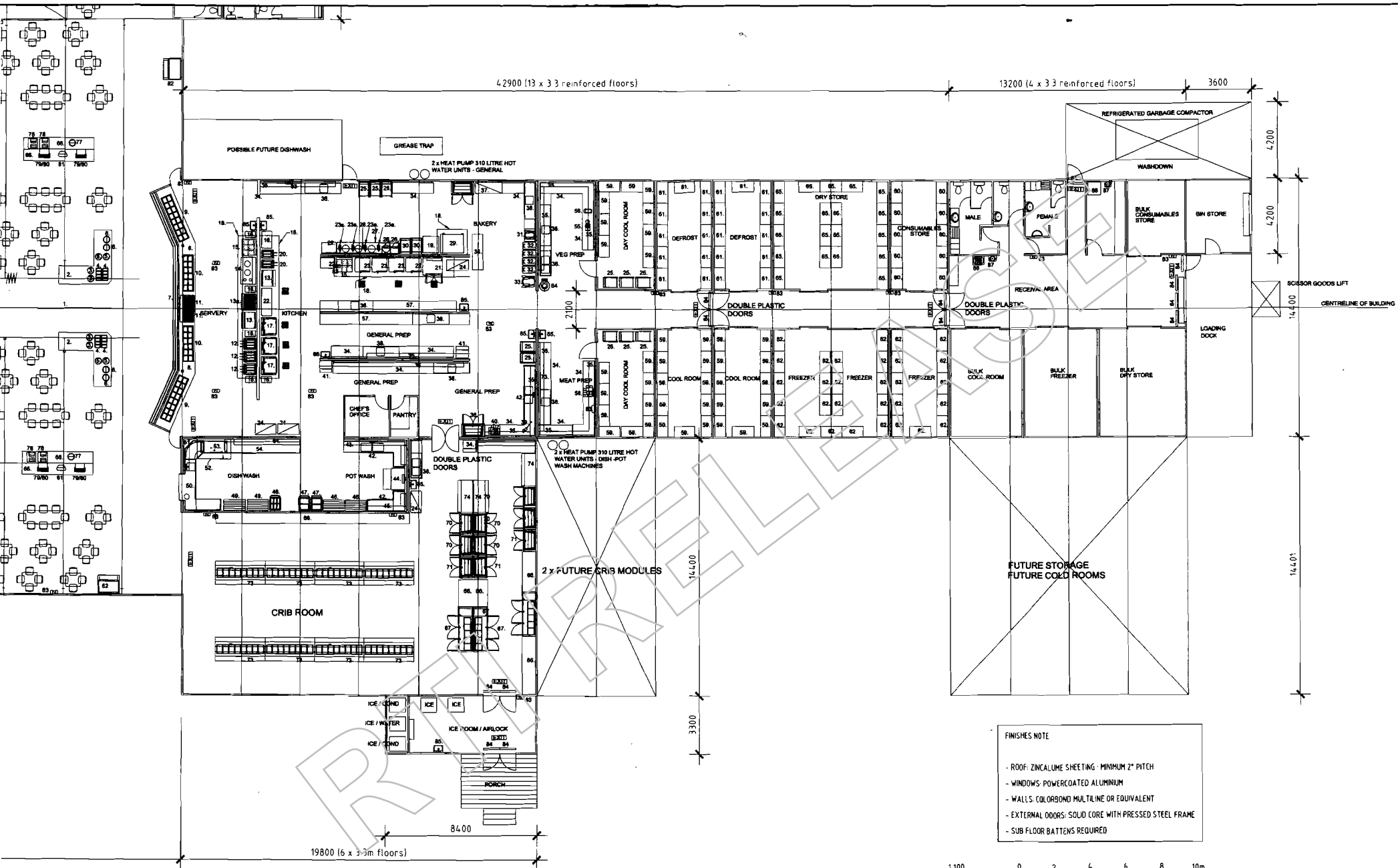
REV	DESCRIPTION	BY	CHKD	APP	DATE
D	ISSUE FOR TENDER REVISED	JS			25.01.09
C	ISSUE FOR TENDER REVISED	MP	FF	FF	27.01.09
B		JF	JF	JF	30.09.08
A	ISSUE FOR INTERNAL AND CLIENT REVIEW	J.F.	J.F.	J.F.	25.09.08

SCALE	AS SHOWN	DATE
DESIGNED	J.F.	24.09.08
DESIGN CHECKED	J.F.	25.09.08
DRAWN	J.F.	25.09.08
DRAFTING CHECK	J.F.	25.09.08

BMA
 BHP Billiton Mitsubishi Alliance

APPROVAL 1
 APPROVAL 2

Caval Ridge Mine		
Buffet Park Construction Village Dining Room Plan		
DRAWING NUMBER	A1	REV.
PHCVM03-7311-AA-DG-0003		D



DESIGNED CHECKED	DRAFTING CHECKED	ENGINEER MANAGER	REVISION CHECKED	REVISION APPROVED
DOCUMENT TITLE				
COMMENTS				

SKM
 Sinclair Knight Merz Pty Ltd
 A.C.N. 001 024 095
 32 Cordelia Street
 South Brisbane QLD 4101 Australia
 Telephone (07) 3026 7100
 Facsimile (07) 3026 7300

REV	DESCRIPTION	BY	CHKD	APP	DATE
D	ISSUE FOR TENDER REVISED	JF			29.01.09
C	ISSUE FOR TENDER REVISED	HP	FF	FF	27.01.09
B	ISSUED FOR TENDER	JF	JF	JF	30.09.08
A	ISSUE FOR INTERNAL AND CLIENT REVIEW	JF	JF	JF	25.09.08
REV	DESCRIPTION	BY	CHKD	APP	DATE
REVISIONS, ISSUES AND APPROVALS					

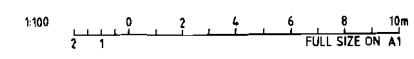
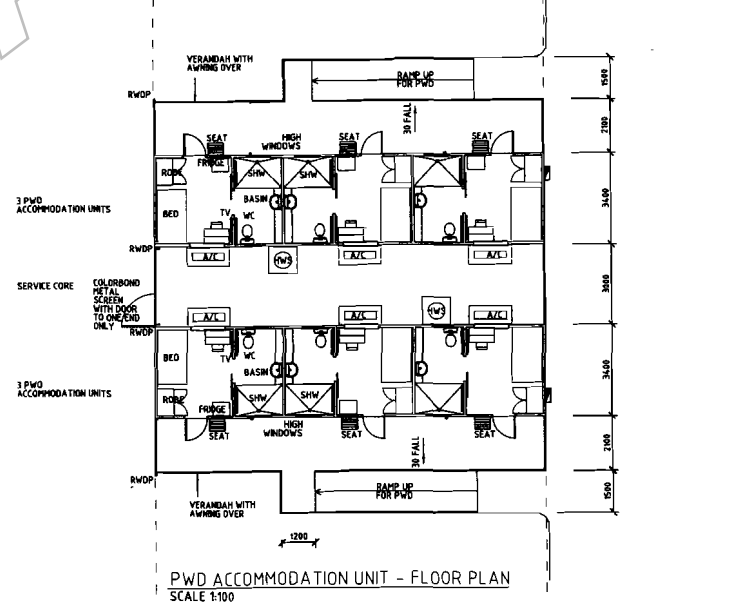
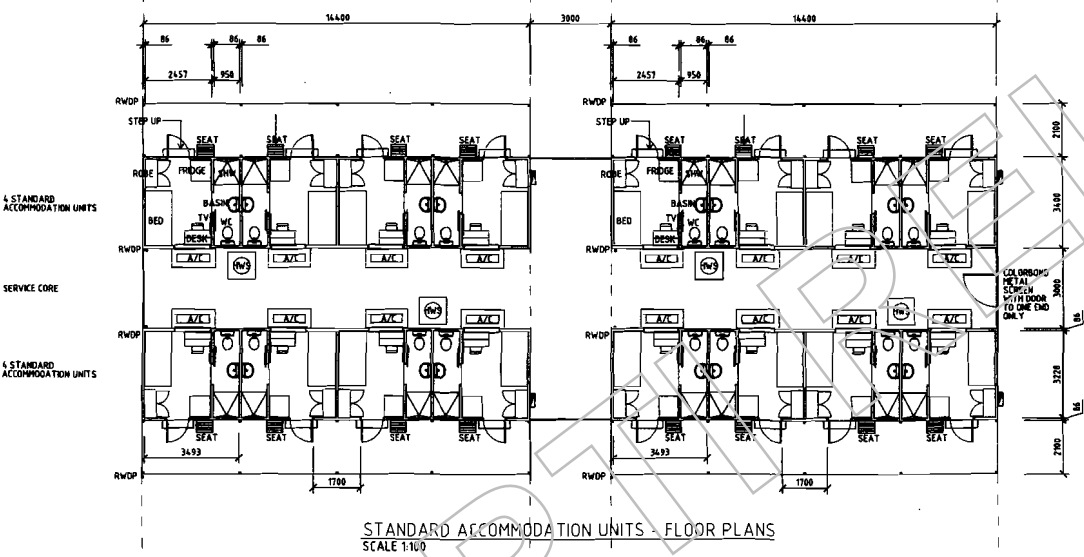
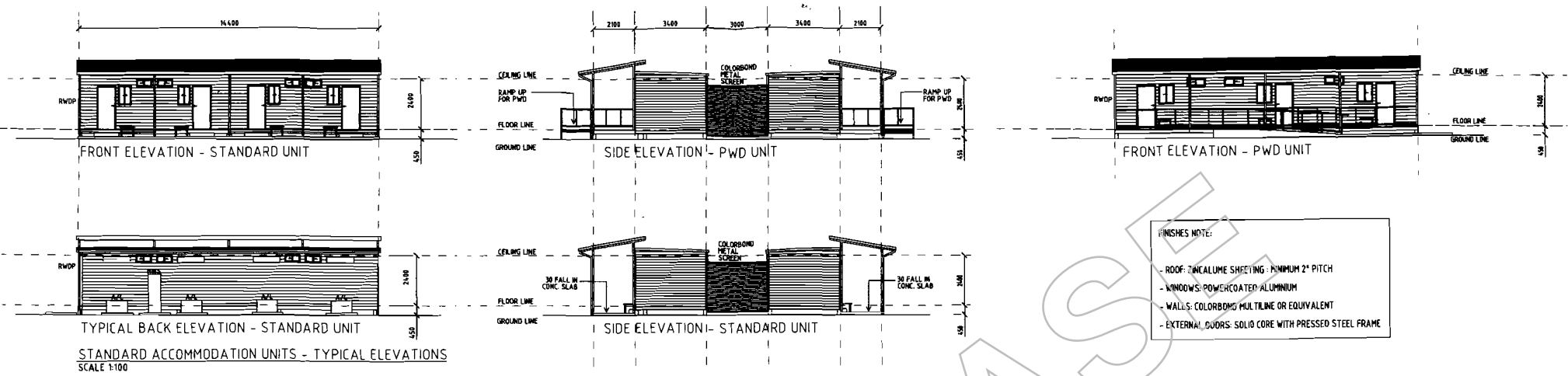
SCALE	AS SHOWN	DATE
DESIGNED	JF	24.09.08
DESIGN CHECKED	LF	25.09.08
DRAWN	JF	25.09.08
DRAFTING CHECK	JF	25.09.08
ENGINEER MANAGER		
ACAD FILE		

BMA
 BHP Billiton Mitsubishi Alliance

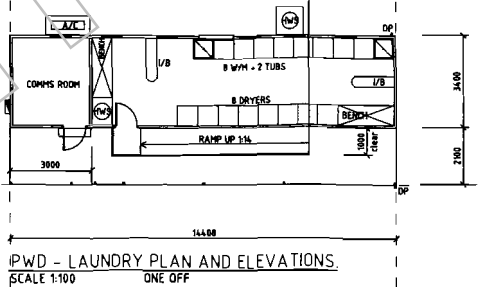
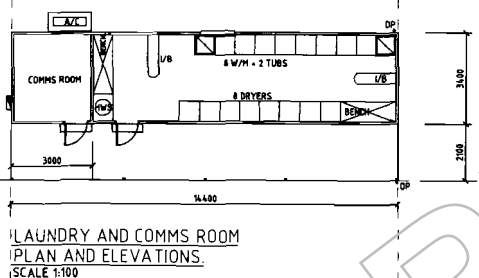
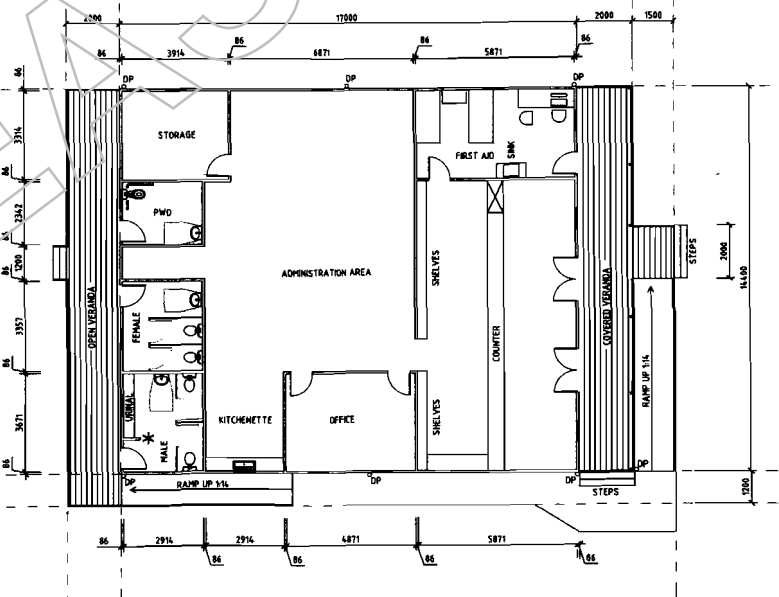
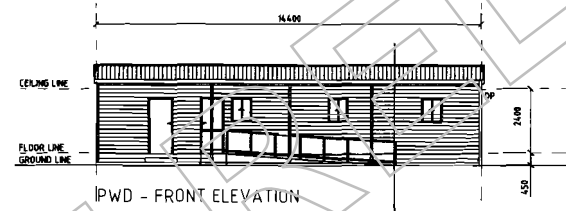
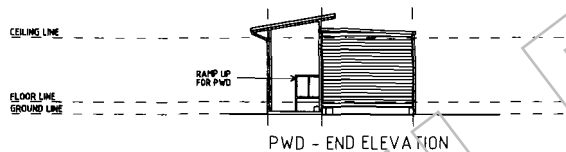
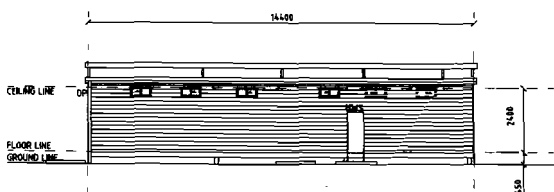
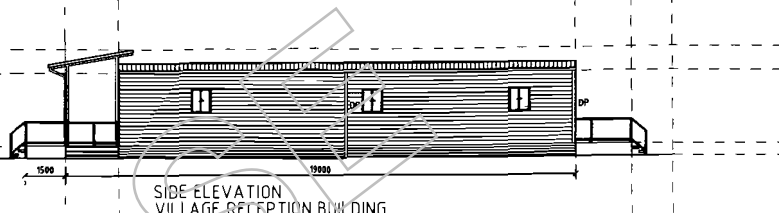
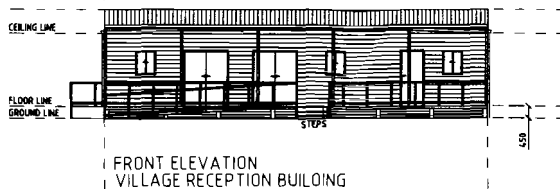
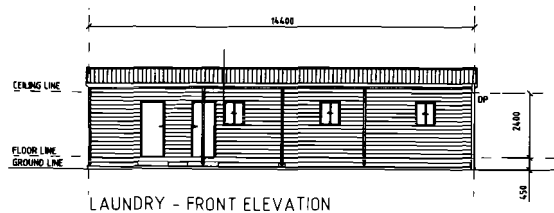
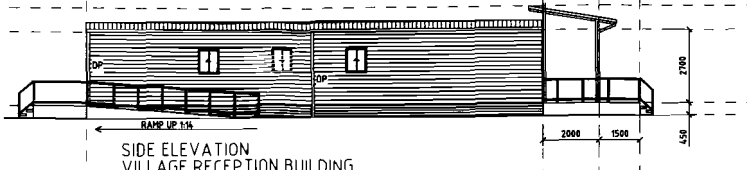
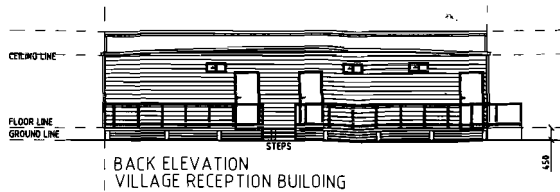
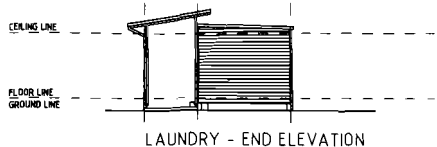
APPROVAL 1

APPROVAL 2

Caval Ridge Mine		
Buffel Park Construction Village Kitchen and Store Plan		
DRAWING NUMBER	A1	REV.
PHCVM03-7311-AA-DG-0004		D



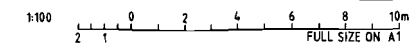
DESIGNED CHECKED	DRAFTING CHECKED	ENGINEER MANAGER	REVISION CHECKED	REVISION APPROVED	CONSULTANTS	SCALE	AS SHOWN	DATE		Caval Ridge Mine Buffel Park Construction Village Accommodation Units Plans and Elevations	AT	REV.	
					 Sinclair Knight Merz Pty Ltd A.C.N. 081 024 085 32 Cordelia Street South Brisbane QLD 4101 Australia Telephone (07) 3026 7100 Facsimile (07) 3026 7300	DESIGNED	F.F.	5.09.08			DRAWING NUMBER	AT	REV.
						DESIGN CHECKED	S.C.D.	25.01.09			PHCVM03-7311-AA-DG-0005		
						DRAWN	S.C.D.	25.01.09					
						DRAFTING CHECK	B.W.	25.01.09					
DOCUMENT TITLE						REV	DESCRIPTION	BY	CHKD	APP	DATE	APPROVAL 1	
DOCUMENTS						REV	DESCRIPTION	BY	CHKD	APP	DATE	APPROVAL 2	
							REVISIONS, ISSUES AND APPROVALS						



VILLAGE RECEPTION BUILDING PLAN AND ELEVATIONS
SCALE 1:100

- FINISHES NOTE:
- ROOF: ZINCLUME SHEETING - MINIMUM 2° PITCH
 - WINDOWS: POWEROATED ALUMINIUM
 - WALLS: COLORBOND MULTILINE OR EQUIVALENT
 - EXTERNAL DOORS: SOLID CORE WITH PRESSED STEEL FRAME
 - SUB FLOOR BATTENS TO VILLAGE RECEPTION REQUIRED

NOTE:
* FULL HEIGHT SCREEN WALL TO URINAL



DESIGNED CHECKED	DRAFTING CHECKED	ENGINEER MANAGER	REVISION CHECKED	REVISION APPROVED
DOCUMENT TITLE				
DOCUMENTS				

SKM
Sinclair Knight Merz Pty Ltd
A.C.N. 001 024 095
32 Cordelia Street
South Brisbane QLD 4101 Australia
Telephone (07) 3026 7100
Facsimile (07) 3026 7300

REV	DESCRIPTION	S.C.D.	B.W.	DATE	APP	DATE
F	ISSUE FOR DA	CC		08.04.10		
E	ISSUE FOR TENDER REVISED	JH		25.03.09		
D	ISSUE FOR TENDER REVISED	JS		29.01.09		
C	ISSUE FOR TENDER REVISED	HP	FF	27.01.09		
B	ISSUED FOR TENDER	S.C.D.	B.W.	30.09.08		
A	ISSUE FOR INTERNAL AND CLIENT REVIEW	S.C.D.	B.W.	25.09.08		
		BT	CRD	APP	DATE	

REVISIONS, ISSUES AND APPROVALS

BMA
BHP Billiton Mitsubishi Alliance

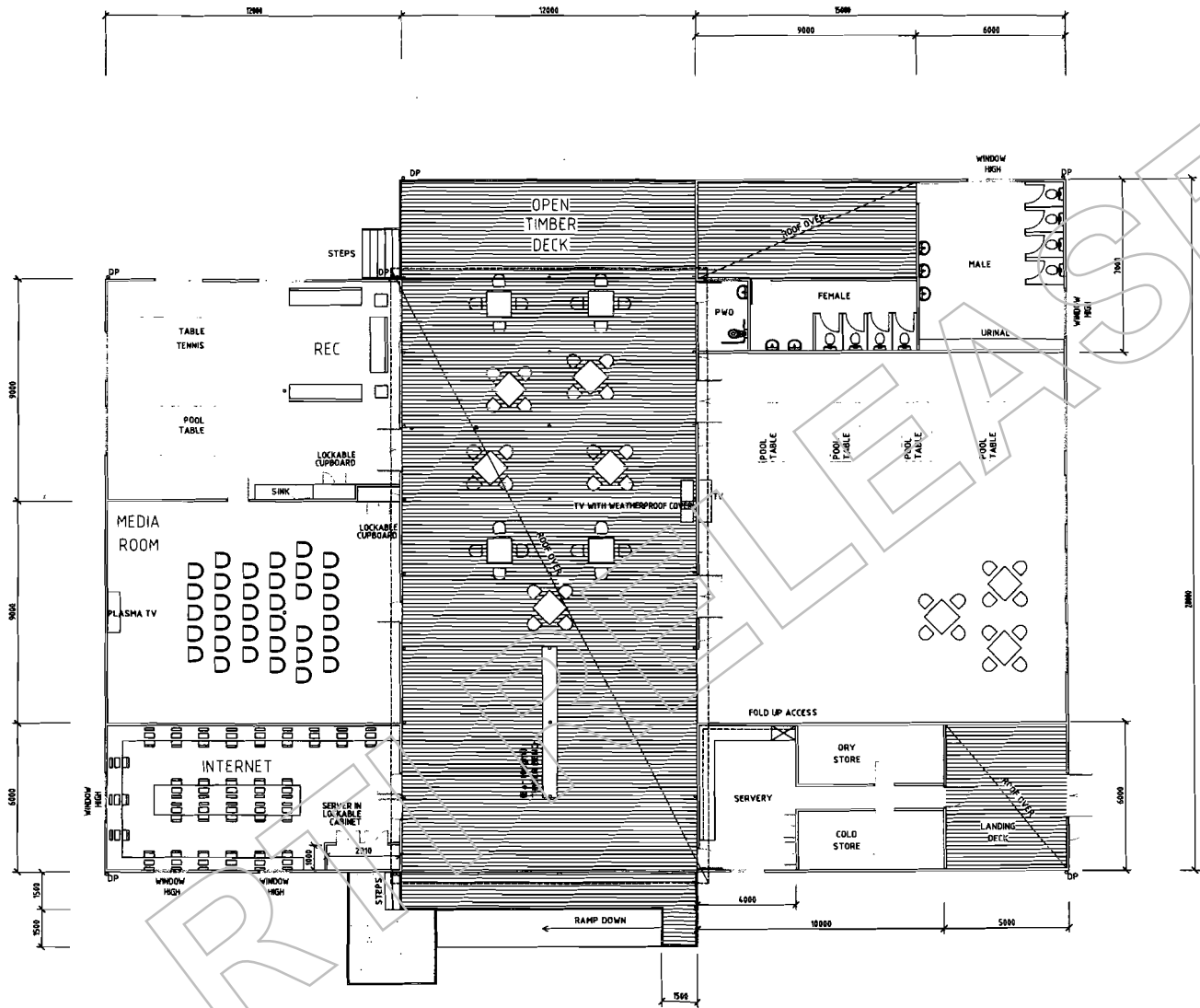
SCALE AS SHOWN DATE
DESIGNED F.F. 5.09.08
DESIGN CHECKED
DRAWN S.C.D. 25.09.08
DRAFTING CHECK B.W. 25.09.08
ENGINEER MANAGER

APPROVAL 1
APPROVAL 2

Caval Ridge Mine

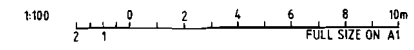
Buffel Park
Construction Village
Village Reception Building and Laundry Unit
Plans and Elevations

DRAWING NUMBER A1 REV.
PHCVM03-7311-AA-DG-0006 F



FINISHES NOTE:

- ROOF: ZINCALUME SHEETING - MINIMUM 2° PITCH
- WINDOWS: POWERCOATED ALUMINUM
- WALLS: COLORBOND MULTILINE OR EQUIVALENT
- EXTERNAL DOORS: SOLID CORE WITH PRESSED STEEL FRAME
- SUB FLOOR BATTENS REQUIRED



DESIGNED CHECKED	DRAFTING CHECKED	ENGINEER MANAGER	REVISION CHECKED	REVISION APPROVED
DOCUMENT TITLE				
COMMENTS				

SKM
Sinclair Knight Merz Pty Ltd
A.C.N. 001 024 095
32 Cordelia Street
South Brisbane QLD 4101 Australia
Telephone (07) 3026 7100
Facsimile (07) 3026 7300

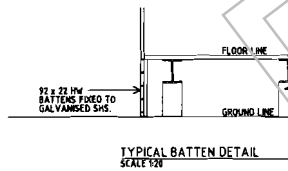
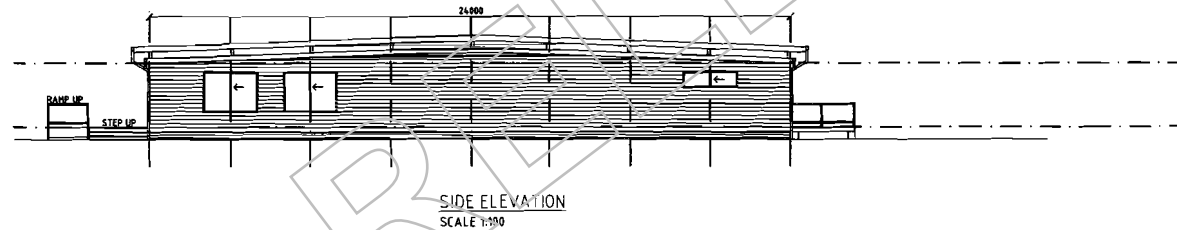
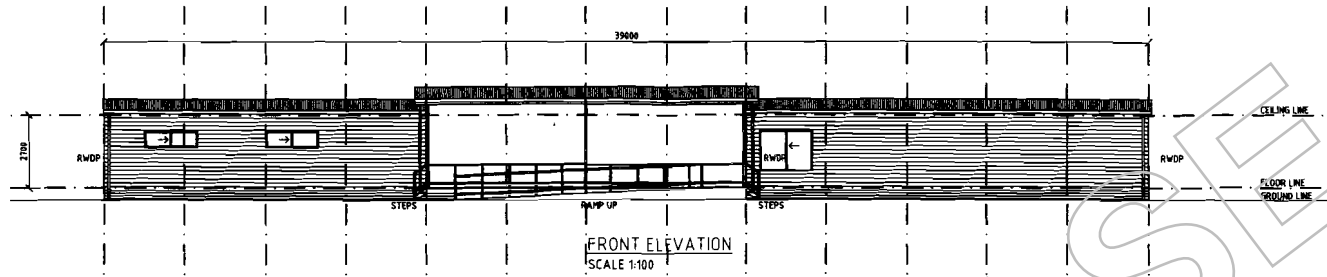
REV	DESCRIPTION	BY	CHKD	APP	DATE
F	ISSUE FOR DA REVISED	GC			22.04.10
E	ISSUE FOR DA	GC			08.04.10
D	ISSUE FOR TENDER REVISED	JS			29.01.09
C	ISSUE FOR TENDER REVISED	HP	FF	FF	27.01.09
B	ISSUED FOR TENDER	S.C.D.	B.W.		30.09.08
A	ISSUE FOR INTERNAL AND CLIENT REVIEW	S.C.D.	B.W.		25.09.08

SCALE AS SHOWN DATE
DESIGNED F.P. 5.09.08
DESIGN CHECKED
DRAWN S.E.D. 25.09.08
DRAFTING CHECK B.W. 25.09.08
ENGINEER MANAGER
ACAD FILE

BMA
BHP Billiton Mitsubishi Alliance

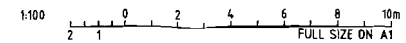
APPROVAL 1
APPROVAL 2

Caval Ridge Mine		
Buffel Park Construction Village Wet Mess and Recreation Building Plan		
DRAWING NUMBER	AT	REV.
PHCYM03-7311-AA-DG-0007		F



FINISHES NOTE:

- ROOF: ZINCALUME SHEETING - MINIMUM 2° PITCH
- WINDOWS: POWERCOATED ALUMINIUM
- WALLS: COLORBOND MULTILINE OR EQUIVALENT
- EXTERNAL DOORS: SOLID CORE WITH PRESSED STEEL FRAME
- SUB FLOOR BATTENS REQUIRED



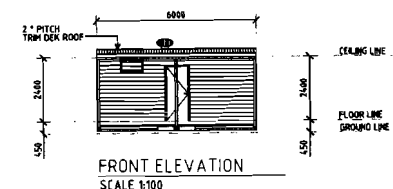
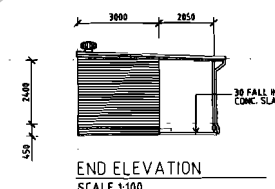
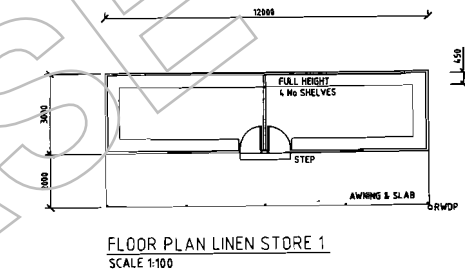
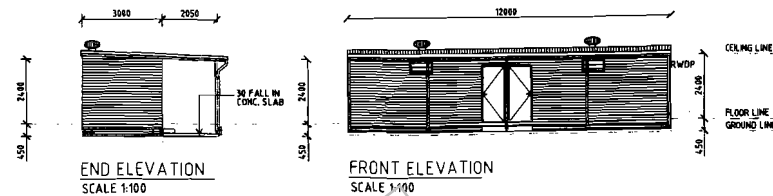
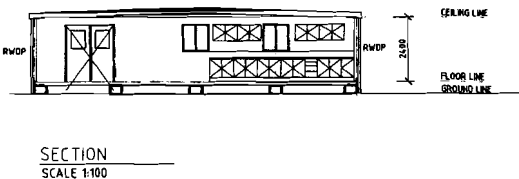
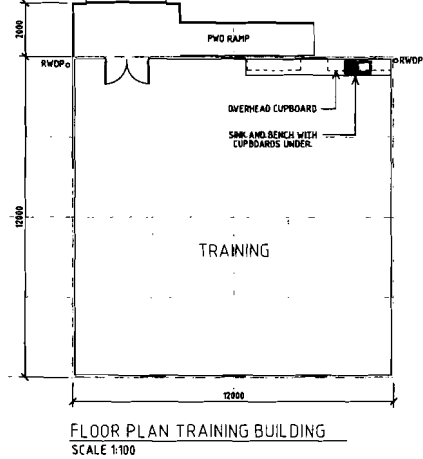
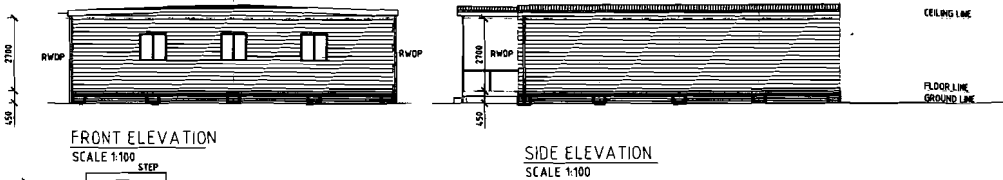
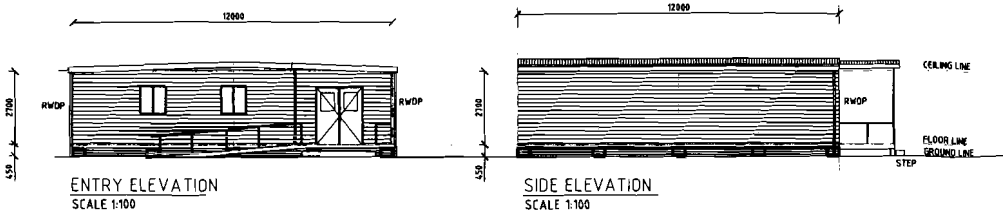
DESIGNED CHECKED	DRAFTING CHECKED	ENGINEER MANAGER	REVISION CHECKED	REVISION APPROVED
DOCUMENT TITLE				
REVISIONS				

SKM
 Sinclair Knight Merz Pty Ltd
 A.C.N. 001 024 095
 32 Cordelia Street
 South Brisbane QLD 4101 Australia
 Telephone (07) 3026 7100
 Facsimile (07) 3026 7300

REV	DESCRIPTION	BY	CHKD	APP	DATE
E	ISSUE FOR DA	GC			08.04.18
D	ISSUE FOR TENDER REVISED	JS			29.01.09
C	ISSUE FOR TENDER REVISED	MP	FF	FF	27.01.09
B	ISSUED FOR TENDER	SCD	BW		20.09.08
A	ISSUE FOR INTERNAL AND CLIENT REVIEW	SCD	B.W.		25.09.08

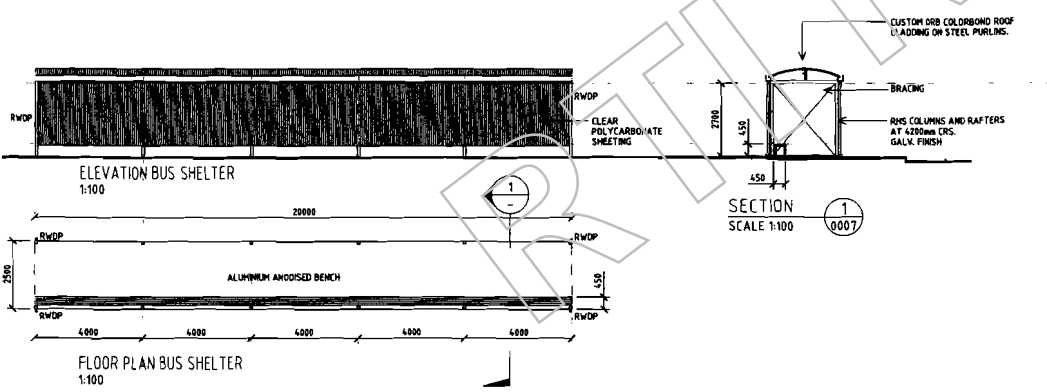
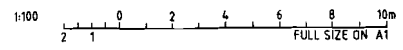
BMA
 BHP Billiton Mitsubishi Alliance

Caval Ridge Mine		
Buffet Park Construction Village Wet Mess and Recreation Building Elevations and Sections		
APPROVAL 1	A1	REV.
APPROVAL 2		
DRAWING NUMBER		
PHCVM03-7311-AA-DG-0008		E



FINISHES NOTE:

- ROOF: ZINCALUME SHEETING - MINIMUM 2° PITCH
- WINDOWS: POWERCOATED ALUMINIUM
- WALLS: COLORBOND MULTILINE OR EQUIVALENT
- EXTERNAL DOORS: SOLID CORE WITH PRESSED STEEL FRAME
- SUB FLOOR BATTENS TO TRAINING ROOM REQUIRED



DESIGNED CHECKED	DRAFTING CHECKED	ENGINEER MANAGER	REVISION CHECKED	REVISION APPROVED
DOCUMENT TITLE				
ELEMENTS				

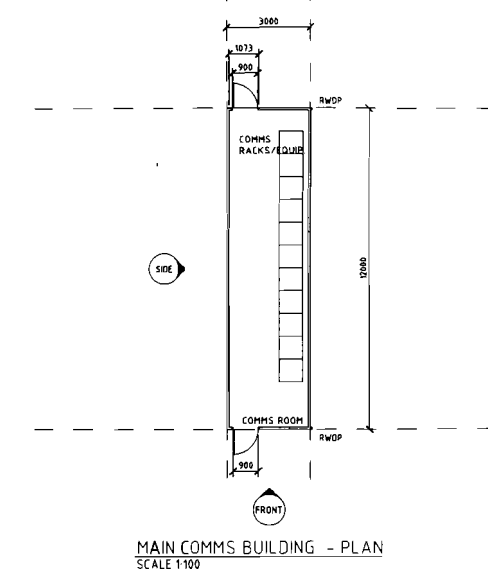
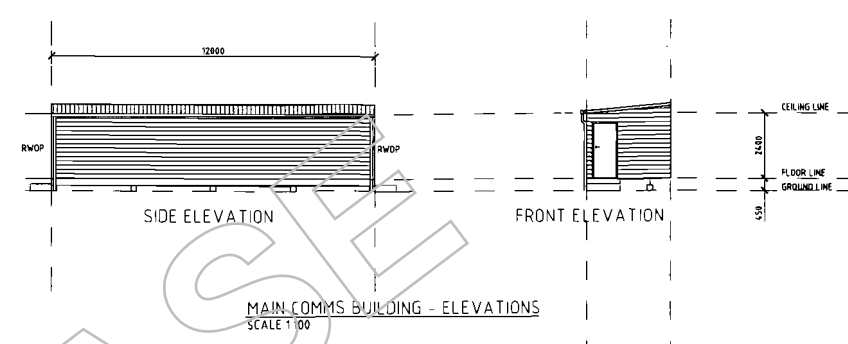
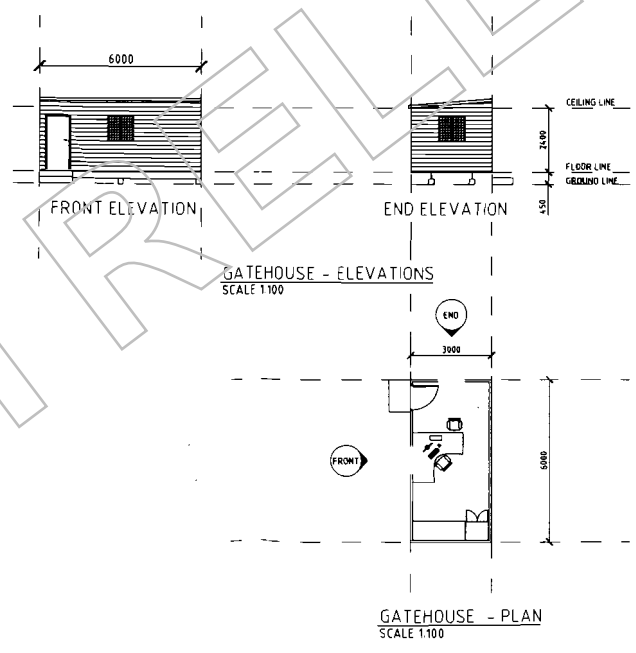
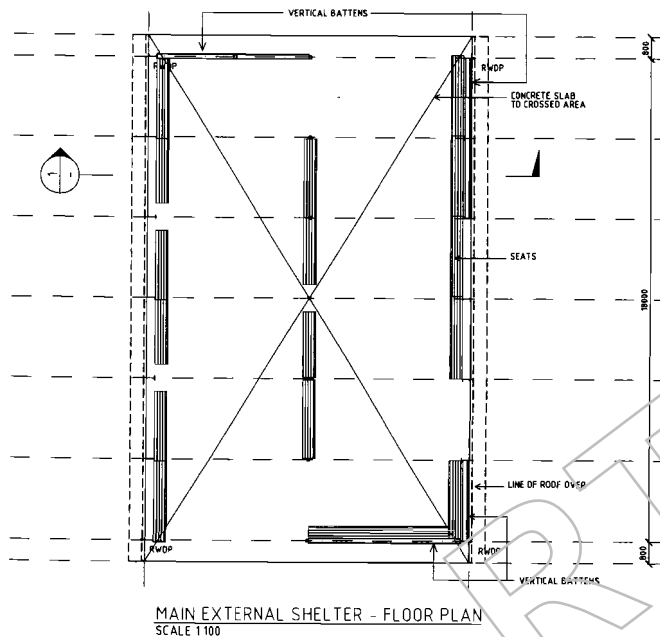
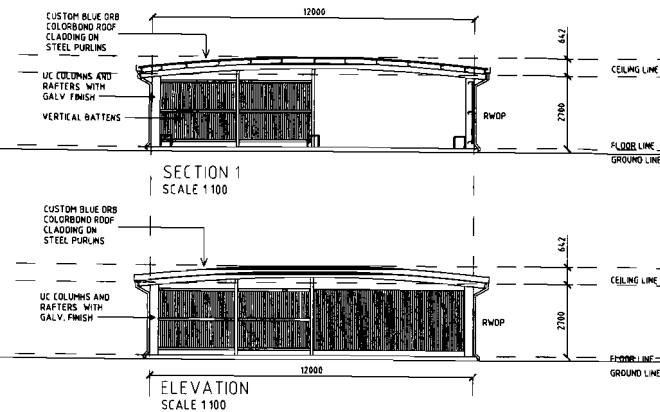
SKM
Sinclair Knight Merz Pty Ltd
A.C.N. 001 024 095
32 Cordelia Street
South Brisbane QLD 4101 Australia
Telephone (07) 3026 7100
Facsimile (07) 3026 7300

REV	DESCRIPTION	BY	CHKD	APP	DATE
F	ISSUE FOR DA	GC			08.11.10
E	ISSUE FOR TENDER REVISED	JH			25.03.09
D	ISSUE FOR TENDER REVISED	JS			29.01.09
C	ISSUE FOR TENDER REVISED	HP	FF	FF	27.01.09
B	ISSUE FOR TENDER	SCD	BW		28.09.08
A	ISSUE FOR INTERNAL AND CLIENT REVIEW	S.C.D.	B.W.		25.09.08
REV	DESCRIPTION	BY	CHKD	APP	DATE

SCALE	AS SHOWN	DATE
DESIGNED	FF.	5.09.08
DESIGN CHECKED		
DRAWN	S.C.D.	25.09.08
DRAFTING CHECK	B.W.	25.09.08
ENGINEER MANAGER		
ACAD FILE		

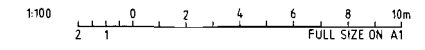
BMA
BHP Billiton Mitsubishi Alliance

Caval Ridge Mine		
Buffel Park Construction Village Training, Linen Stores & Bus Shelter Plans, Elevations and Sections		
DRAWING NUMBER	AT	REV.
PHCVM03-7311-AA-DG-0009		F



FINISHES NOTE

- ROOF: ZINCALUME SHEETING - MINIMUM 2° PITCH
- WINDOWS: POWERCOATED ALUMINIUM
- WALLS: COLORBOND MULTILINE OR EQUIVALENT
- EXTERNAL DOORS: SOLID CORE WITH PRESSED STEEL FRAME



DESIGNED CHECKED	DRAFTING CHECKED	ENGINEER MANAGER	REVISION CHECKED	REVISION APPROVED
DOCUMENT TITLE				

SKM
 Sinclair Knight Merz Pty Ltd
 A.C.N. 001 024 095
 32 Cordelia Street
 South Brisbane QLD 4101 Australia
 Telephone (07) 3026 7100
 Facsimile (07) 3026 7300

REV	DESCRIPTION	DATE	BY	CHKD	APP	DATE
C	ISSUE FOR TENDER REVISED	25.03.09	JH			
B	ISSUE FOR TENDER	30.09.08	SCD	BW		
A	ISSUE FOR INTERNAL AND CLIENT REVIEW	25.09.08	S.C.D.	B.W.		

BMA
 BHP Billiton Mitsubishi Alliance

APPROVAL 1			
APPROVAL 2			

Caval Ridge Mine		
Buffel Park, Construction Village Main External Shelter, Main Comms & Gatehouse Plans, Elevations and Sections		
DRAWING NUMBER	A1	REV.
PHCYM03-7311-AA-DG-0012		C