

# Community Hubs and Partnerships

## Strategic Review 2016 and Next Steps

The Community Hubs and Partnerships program facilitates collaborative social service and infrastructure planning to maximise the value of investment and improve the accessibility of services for Queensland communities.

CHaPs supports economic growth, jobs and liveability across Queensland by providing facilitation and coordination services across agencies.



**Better Intelligence**

**Greater business intelligence**  
Improved sharing of and access to information



**Better Value**

**Improved value for money**  
Greater accessibility to streamlined and integrated services



**Better Service**

**Enhanced service delivery**  
Maximised investment and optimised use of government resources

### CONTEXT

#### POPULATION GROWTH EXPECTATIONS Queensland



Source: State Infrastructure Plan, 2016

2014  
4,722,447

2036  
7,095,179

+50%

#### BUSINESS AS USUAL

Focus: Individual seeks out services which are not connected



### CHaPS ROLE



Identifying opportunities



Bringing the right people to the table



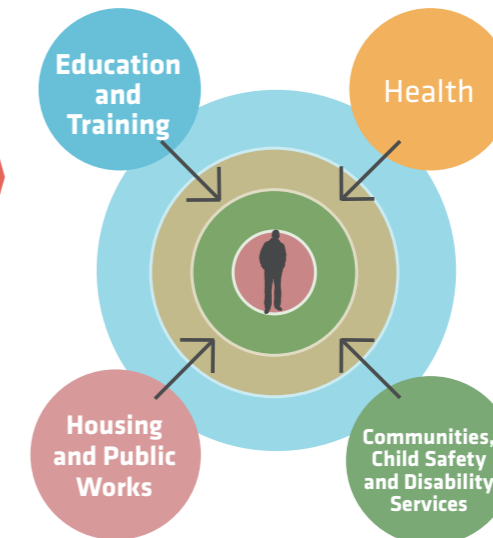
Facilitating partnerships



Facilitating project outcomes

#### COMMUNITY HUB MODEL

Focus: Agencies deliver integrated services to individuals



### VISION

STAGED DELIVERY OF NEW LEADING PRACTICE COMMUNITY HUB SOCIAL INFRASTRUCTURE BENCHMARKS IN QUEENSLAND

### Current Project Activity

- Aura Community Hub
- Caboolture Combined Services Hub
- Coomera Services Plan
- Hervey Bay Health and Education Hub
- Inala Community Hub
- Logan Development Areas
- Maryborough Emergency Services Hub
- Moranbah Youth and Community Hub
- Mount Isa Social Infrastructure Needs Analysis
- Redcliffe Peninsula Futures Collaborative Vision
- Ripley Community Hub
- Western Downs Youth and Community Hub
- Non-Government Education Sector Partnership Project



CONTINUE TO UNLOCK INNOVATIVE SOLUTIONS

PDA GREENFIELD DEVELOPMENT  
YARRABILBA, GREATER FLAGSTONE, AURA AND RIPLEY

BROWNFIELD DEVELOPMENT PRIORITY INFILL DEVELOPMENT AREAS

2016

2017

2018

2019